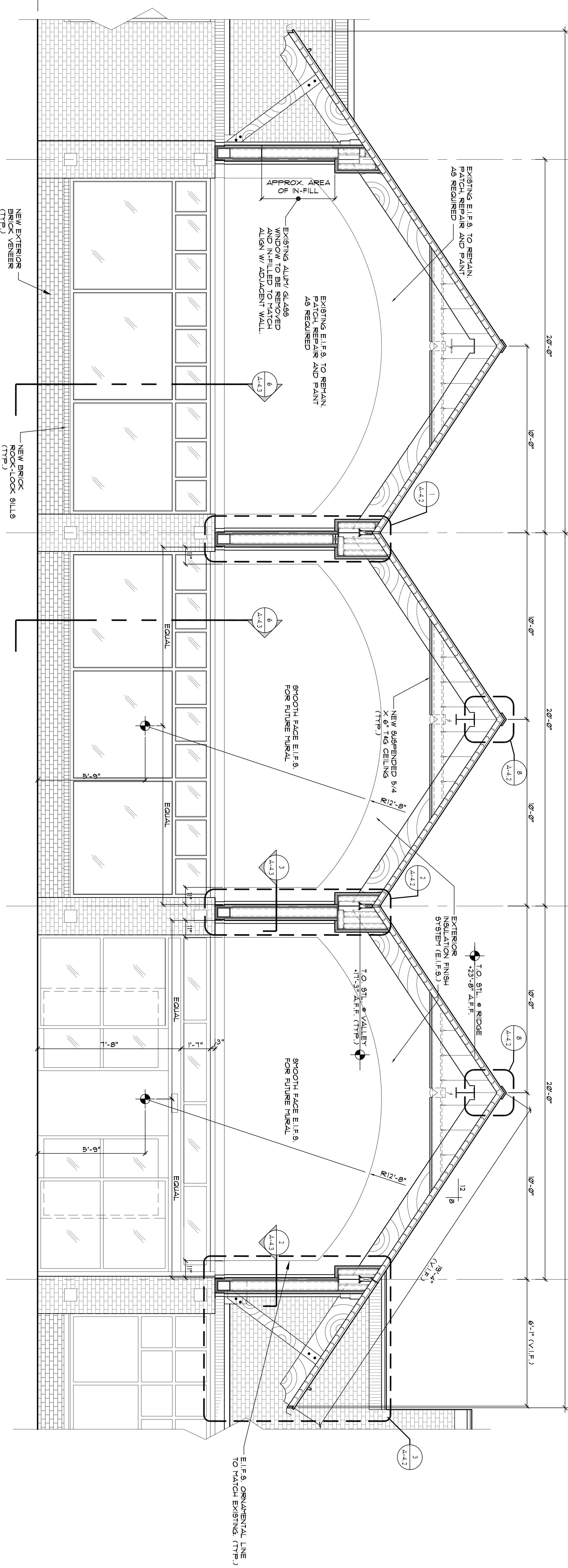


A EXTERIOR ELEVATION
SCALE: 3/8" = 1'-0"

E SECTION OF EXIST. GABLED CANOPY & STOREFRONT FACADE TO MODIFIED

H SECTION OF NEW GABLED CANOPY & FACADE TO ALIGN & MATCH EXISTING

B EXTERIOR SECTION ELEVATION
SCALE: 3/8" = 1'-0"



NO.	DATE	COMMENTS

PROJECT	TRADER JOE'S 81 MARGINAL WAY PORTLAND, ME. 04101	SALES	17,224 sq. ft.	DATE	04/28/10
SHEET NAME	STOREFRONT SECTIONS	STOCK	5,424 sq. ft.	JOB No.	FT-1912
		MISC.	1,464 sq. ft.	DRAWN BY:	FTA
		TOTAL	23,930 sq. ft.	TENANT STORE No.	XXX
				SPACE No.	XXXX

