

NOTES:

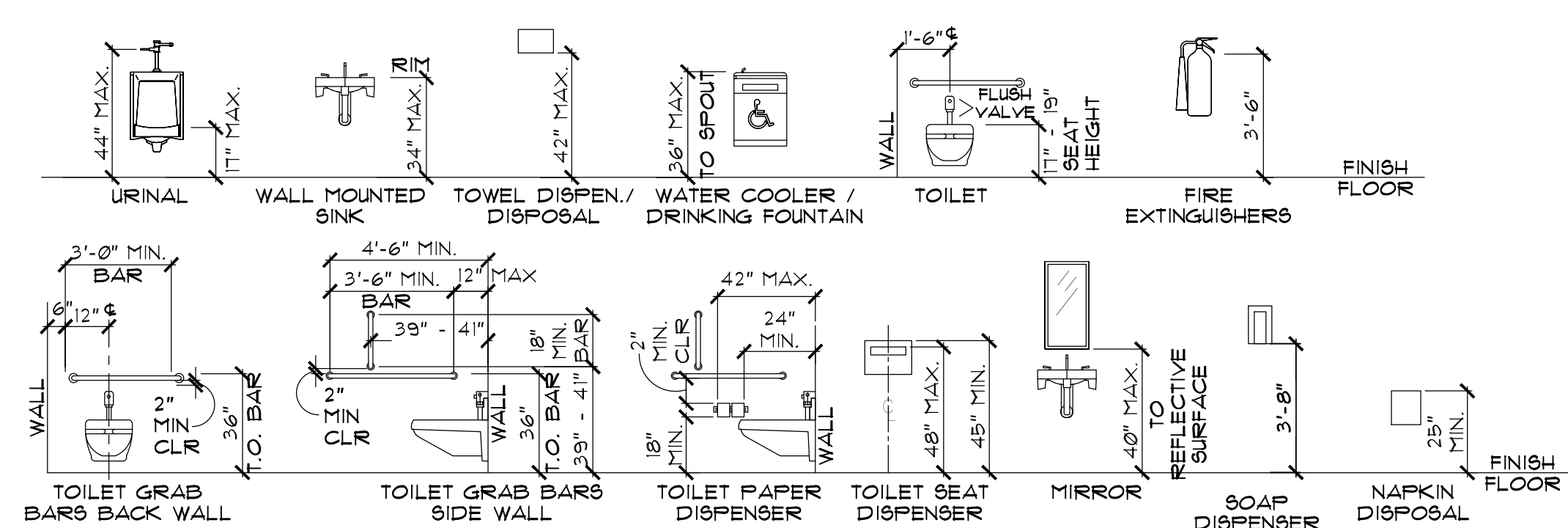
- ALL EXPOSED PIPING BELOW LAV. SHALL BE PROTECTED W/ UNDERSINK PROTECTION PIPE COVERS, LAYGUARD AS MANUFACTURED BY TRUBRO CO. OR EQUAL. (TYPICAL)
- G.C. SHALL HLD 2" MIN. AT BOTTOM OF HORIZONTAL GRAB BARS AND 12" MINIMUM AT THE TOP OF GRAB BARS PER ANSI AND ADA GUIDELINES.

CABINETS NOTE:

ALL PRE-FABRICATED CABINETS IN DEMO STATION, DEMO ROOM AND RESTROOM, ETC. TO BE "AMERICAN CLASSICS" OR "KITCHEN CLASSICS" CABINETS - COLOR: NATURAL MAPLE OR APPROVED EQUAL. ANY SUBSTITUTION SHALL BE SUBMITTED TO TRADER JOE'S REP. FOR REVIEW

NOTES:

ALL COUNTERS AND CUSTOM SHELVING IS TO BE OF CABINET QUALITY CONSTRUCTION WITH ALL SURFACES SMOOTH AND ALL CRACKS AND CREVICES SEALED WITH CAULKING-TYPE SEALANT.

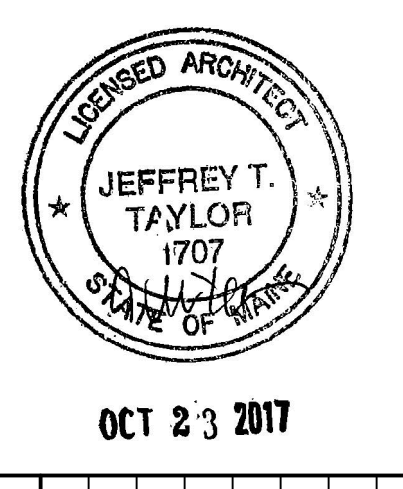
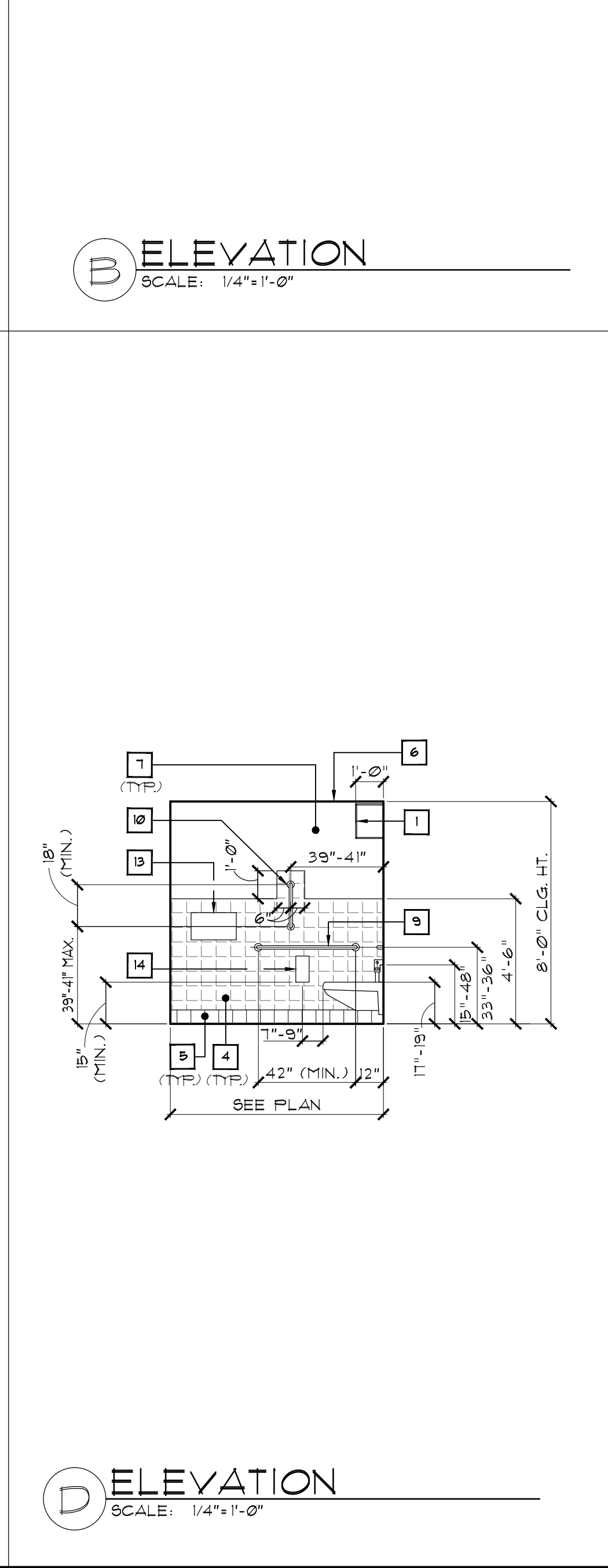
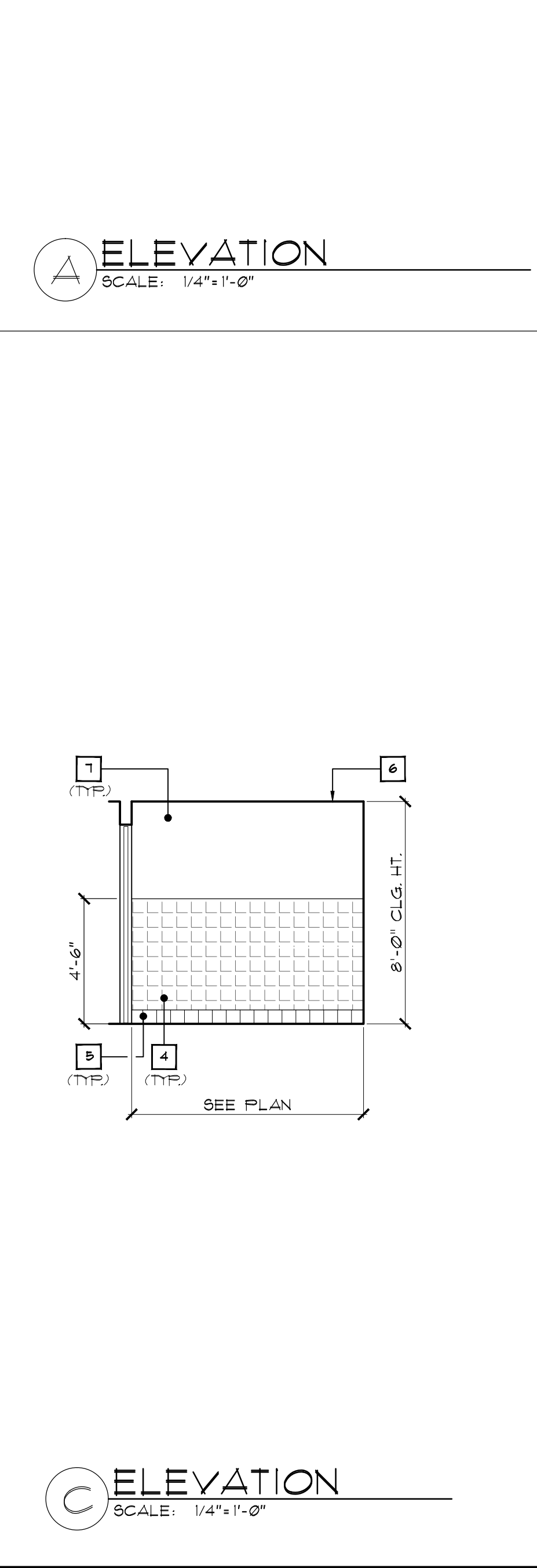
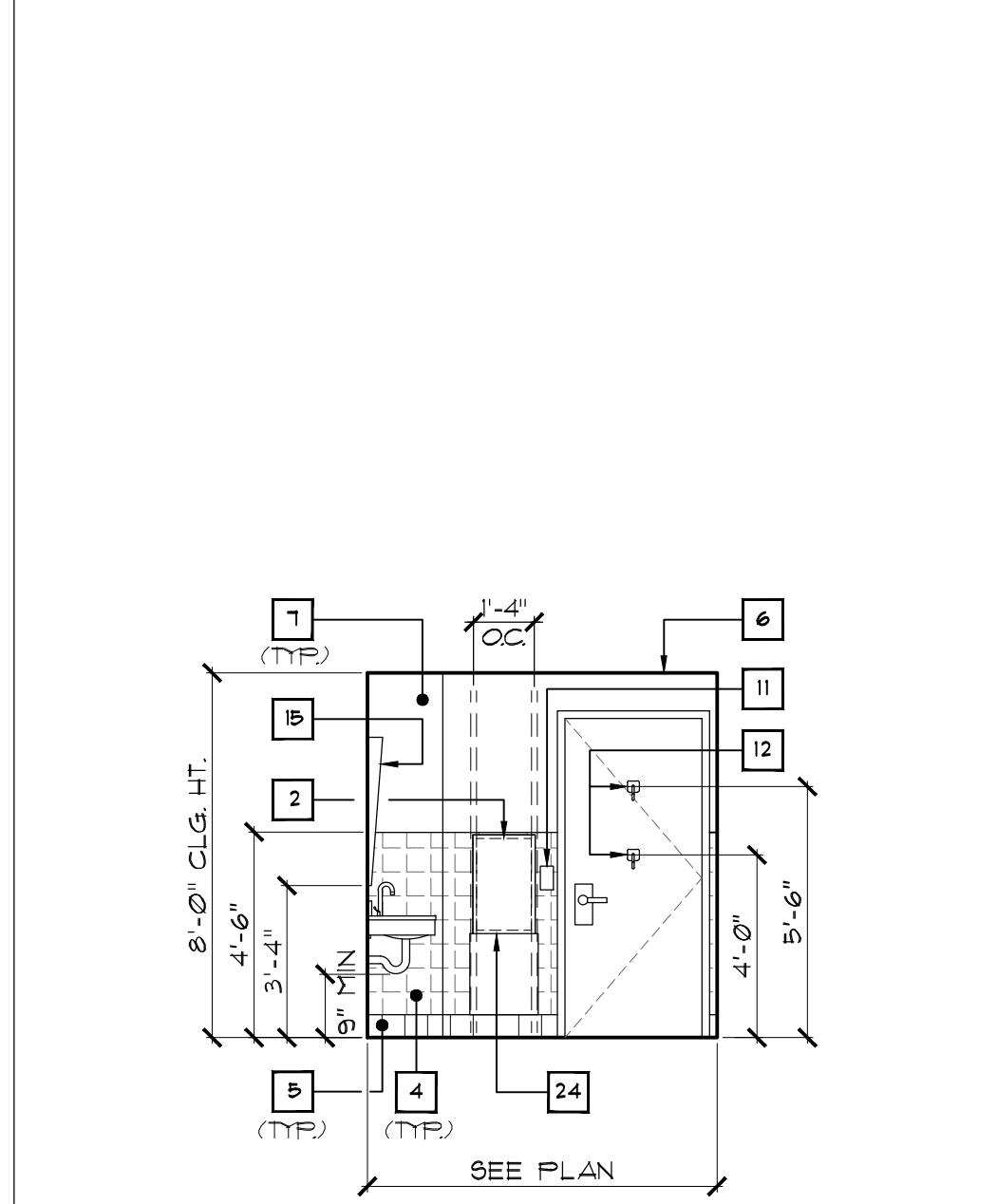
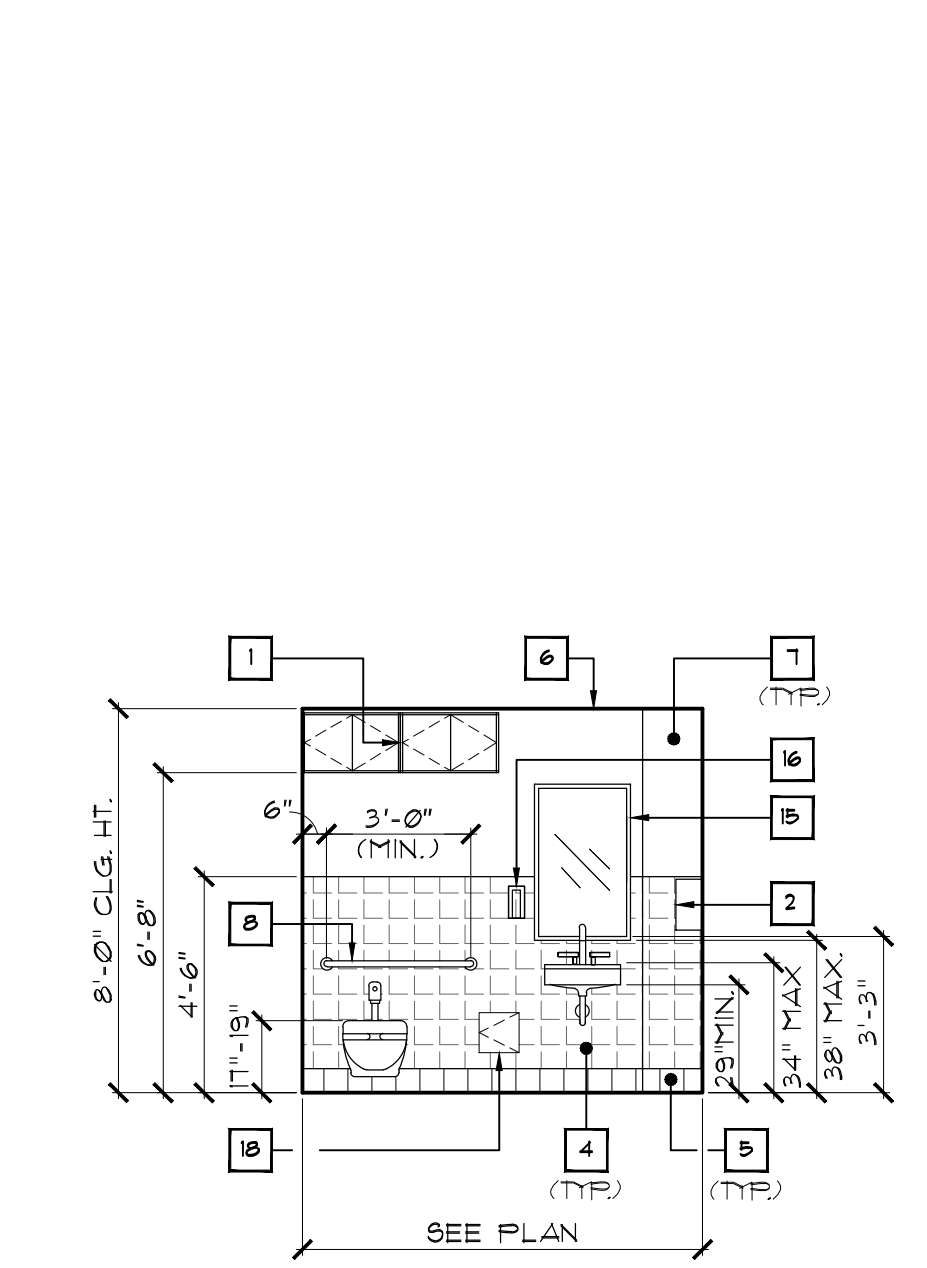


ADA MOUNTING HEIGHTS - PLUMBING FIXTURES, TOILET ACCESSORIES & EQUIPMENT

NOTE: PROVIDE F.R.T. BLOCKING BETWEEN THE STUDS (BEHIND GYP. BD. / FINISH) AS REQ'D TO WITHSTAND A PULL-OUT FORCE OF 300 LBS (MIN.)

TOILET ROOM KEY NOTES

- 24" W x 18" D PRE-FINISHED WOODGRAIN WALL CABINETS. SEE CABINETS SPEC DUG. G-100
- HAND DRYER. VERIFY LOCATION W/ TRADER JOE'S PRIOR TO INSTALLATION. SEE SPECS. ON DUG. G-100. SEE DETAIL 11A-511
- BABY CHANGING STATION. VERIFY LOCATION IN FIELD W/ TJ'S REP. SEE SPECS. ON DUG. G-100. PROVIDE 2X WOOD BLOCKING AS REQ'D BY MANUFACTURER. SEE ENLARGED PLAN 11A-511
- 6" x 6" CERAMIC TILE SEE FINISH SCHEDULE.
- 6" CERAMIC TILE COVE BASE
- NEW GYP. BD. CEILING @ 8'-0" AFF. SEE FINISH SCHEDULE.
- PAINT TO CLG. SEE FINISH SCHEDULE.
- 36" L. GRAB BAR
- 42" L. GRAB BAR
- 18" L. VERTICAL GRAB BAR
- OCCUPANCY SENSOR
SEE ELECT'L DUGS FOR MOUNTING HT.
- STAINLESS STEEL COAT HOOK. SEE SPECS. G-100
- SEAT COVER DISPENSER
- TOILET PAPER DISPENSER
- BEVELED MIRROR
- SOAP DISPENSER
- 30" X 48" CLEAR FLOOR AREA
- PROVIDE 10" X 10" ACCESS PANEL FOR FAUCET SENSOR CONTROLS - V.I.F.
- FRP PANELS TO 4'-0" A.F.F. BUTT JOINT PANELS ONLY. PROVIDE CAULK (NO DIVIDER STRIPS). PROVIDE END TRIM MOLDING AT TOP, CORNER, & SIDES ONLY. VERIFY CONFIGURATION W/ TJ'S REP.
- VINYL BASE
- ADA COMPLIANT HI-LO DRINKING FOUNTAIN
- VERTICAL CEDAR FLANKING (1"x6", 1"x6", 1"x4") W/ 1"x6" RIBBON @ TOP OF CEDAR PANELING & 1"x8" @ FLOOR
- 18" X 24" X 1/2" WATER SHIELD TO BE SUPPLIED BY TRADER JOE'S AND INSTALLED BY THE GC. CUT PANEL AS/IF REQUIRED FOR DRYER TO MEET ADA HEIGHT REQUIREMENTS. INSTALL PANEL TO VENDORS SPECIFICATIONS



OCT 23 2017

NO.	DATE	REVISIONS	COMMENTS
1	9-16-17		FOR PERMIT AND CONSTRUCTION
2	7-11-17		PER LANDLORD COMMENTS
3	8-11-17		PER LANDLORD COMMENTS
4	8-24-17		PER LANDLORD COMMENTS
5	9-14-17		UPDATED TOILET ROOMS

TRADER JOE'S
81 MARGINAL WAY
PORTLAND, ME 04101

ENLARGED TOILET ROOM PLANS, DETAILS AND NOTES

A-102.05