

**APOTHECARY BY DESIGN**  
**NON-STERILE COMPOUNDING LAB**  
 141 PREBLE ST. PORTLAND ME

REVISIONS		
#	DATE	DESCRIPTION

DATE:	9.21.15
PROJECT #:	020115
DRAWN BY:	JME
CHECKED BY:	MET
DRAWING SCALE:	AS NOTED

**SHEET TITLE**  
 CODE REVIEW & LIFE SAFETY PLAN

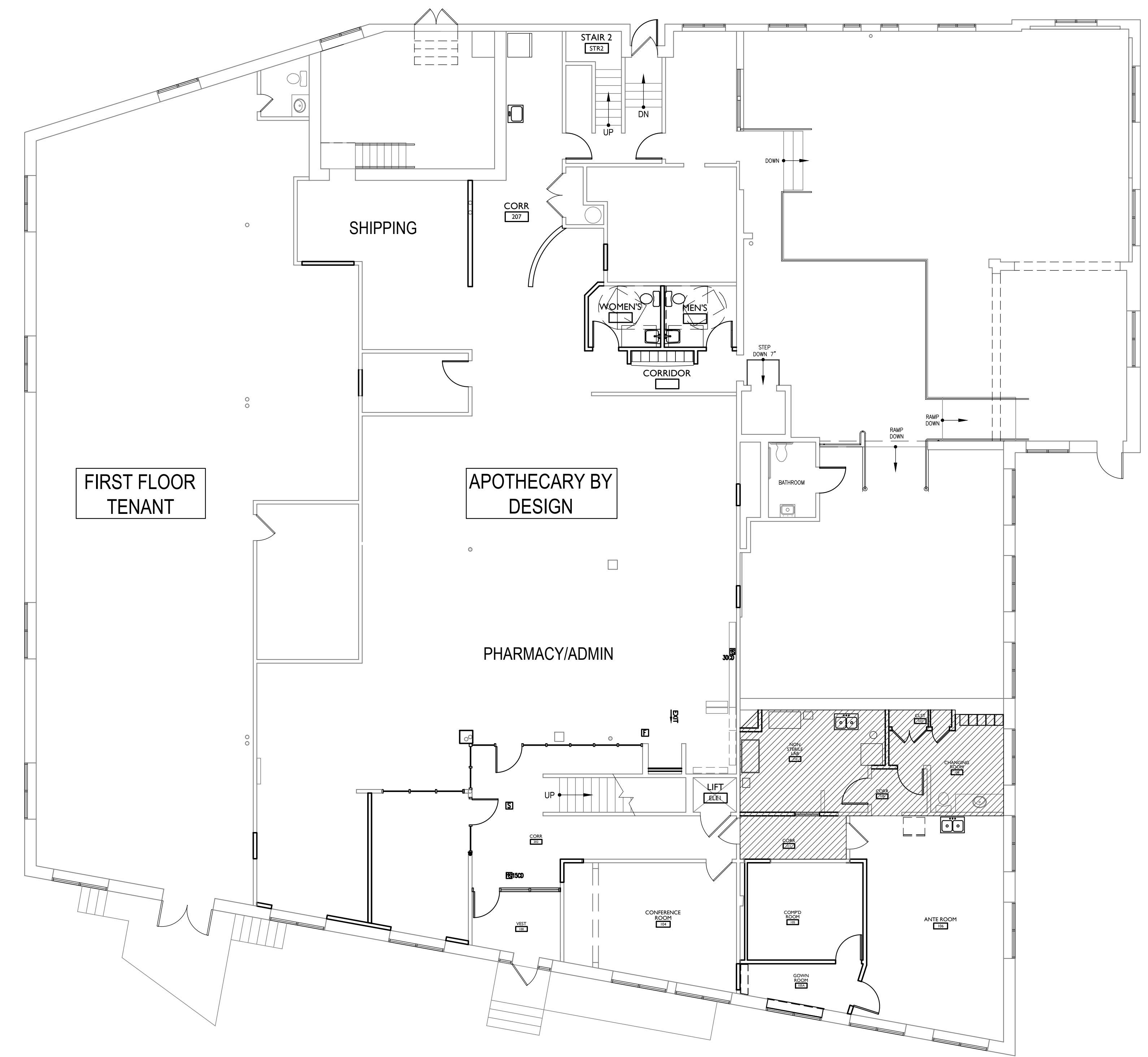
**G102**

© COPYRIGHT 1985-2013  
 REPRODUCTION OR RELEASE OF THIS DOCUMENT WITHOUT WRITTEN PERMISSION OF GAWRON TURGEON ARCHITECTS IS PROHIBITED

2009 IBC: CODE DATA	
USE GROUP CLASSIFICATION	MERCANTILE (EXISTING BUILDING)
OCCUPANT LOAD	FIRST FLOOR: 175 SECOND FLOOR: 49
TYPE OF CONSTRUCTION	TYPE V B
ACTUAL BUILDING AREA BY FLOOR	FIRST FLOOR: 5,247 SF
ACTUAL RENOVATION AREA	FIRST FLOOR: 421 SF
ACTUAL BUILDING HEIGHT	20'-0" +/-
EXIT ACCESS TRAVEL DISTANCE	250 FEET
DEAD END CORRIDORS	50 FEET
CORRIDOR WIDTH	44 INCHES
COMMON PATH - EGRESS TRAVEL	75 FEET
<b>FIRE RATING</b>	
EXTERIOR BEARING WALLS	0 HOUR
INTERIOR BEARING WALLS	0 HOUR
NON-BEARING WALLS AND PARTITIONS	0 HOUR
FLOOR CONSTRUCTION	0 HOUR
ROOF CONSTRUCTION	0 HOUR
CORRIDORS	0 HOUR
STAIR ENCLOSURES	1 HOUR
UNIT SEPARATION	1 HOUR BETWEEN MERCANTILE AND BUSINESS
MECHANICAL/ELECTRICAL ROOMS	1 HOUR
<b>FLAME SPREAD RATINGS:</b>	
INTERIOR WALL AND CEILING FINISH REQUIREMENTS	TABLE 803.9
EXIT ENCLOSURES AND EXIT PASSAGEWAYS	CLASS B
CORRIDORS	CLASS C
ROOMS OR ENCLOSED SPACES	CLASS C
ROOF CONSTRUCTION	0 HOUR
CORRIDORS	0 HOUR
STAIR ENCLOSURES	1 HOUR
INTERIOR FLOOR FINISH REQUIREMENTS	
EXIT ENCLOSURES AND EXIT PASSAGEWAYS	CLASS II
CORRIDORS	CLASS II
<b>PORTABLE FIRE EXTINGUISHERS:</b>	
	SECTION 906
<b>GENERAL NOTES:</b>	
1.	ALL PENETRATIONS OF SMOKE BARRIERS, PARTITIONS, FIRE RATED WALLS AND FLOORS SHALL BE SEALED WITH PROPER APPROVED MATERIALS.
2.	ALL WORK SHALL CONFORM TO LOCAL AND STATE CODES, ORDINANCES AND REQUIREMENTS, ACCESSIBILITY PER A.D.A.A.G

**A8 CODE DATA - IBC 2009**

NTS



▨ EXTENT OF WORK

NFPA 2009: CODE DATA	
USE GROUP CLASSIFICATION	CHAPTER 37 MERCANTILE (EXISTING BUILDING)
OCCUPANT LOAD	FIRST FLOOR: 175 SECOND FLOOR: 49
TYPE OF CONSTRUCTION	TYPE V 000
MERCANTILE CLASS	B
EXTERIOR BEARING WALLS	0 HOUR
EXTERIOR/INTERIOR NON-BEARING WALLS	0 HOUR
INTERIOR BEARING WALLS	0 HOUR
COLUMNS	0 HOUR
BEAMS, GIRDERS, TRUSSES	0 HOUR
FLOOR CONSTRUCTION	0 HOUR
ROOF CONSTRUCTION	0 HOUR
MECHANICAL/ELECTRICAL ROOMS	1 HOUR
TENANT SEPARATION	0 HOUR
APOTHECARY - FIRST FLOOR AND SECOND FLOOR	421 SF
TOTAL BUILDING AREA	14,850 SF TOTAL BUILDING AREA
BUILDING HEIGHT	20'-0" +/-
PROTECTION OF VERTICAL OPENINGS: 37.3.1	ALLOWED UNDER 37.3.1
FIRE SUPPRESSION	SPRINKLER SYSTEM: BUILDING OWNER TO INSTALL SUPERVISORY SYSTEM AS PART OF RENOVATION
FIRE EXTINGUISHERS 9.7.4.1	PER NFPA 2009
COMMON PATH OF TRAVEL LIMIT	100 FEET
DEAD END LIMIT	50 FEET
TRAVEL DISTANCE LIMIT	250 FEET FROM ANY POINT IN A BUILDING
EXITS: 8.6.6 COMMUNICATING SPACE: 37.2.1.2	2 MEANS OF EGRESS: 1 ENCLOSED STAIR AND 1 COMMUNICATING SPACE
CORRIDOR WIDTH	44" MINIMUM
STAIR ENCLOSURES	1 HOUR
EXIT ACCESS CORRIDOR	0 HOUR
<b>FLAME SPREAD RATINGS: INTERIOR FINISH REQUIREMENT SPRINKLERED BUILDING</b>	
WALLS AND CEILINGS	CLASS A, B OR C
EXIT ACCESS CORRIDORS	CLASS A OR B
<b>FLAME SPREAD RATINGS: INTERIOR FLOOR FINISH REQUIREMENTS</b>	
EXITS	CLASS I OR CLASS II (REDUCTION PERMITTED OF ONE CLASS IN SPRINKLERED BUILDING)
CORRIDORS	
<b>GENERAL NOTES:</b>	
1.	ALL PENETRATIONS OF SMOKE BARRIERS, PARTITIONS, FIRE RATED WALLS AND FLOORS SHALL BE SEALED WITH PROPER APPROVED MATERIALS.
2.	ALL WORK SHALL CONFORM TO LOCAL AND STATE CODES, ORDINANCES AND REQUIREMENTS, ACCESSIBILITY PER A.D.A.A.G

**A1 CODE DATA - NFPA 2009**

NTS

**A8 LIFE SAFETY PLAN / TEMPORARY PARTITIONS**

1/8" = 1'-0"



PLAN NORTH