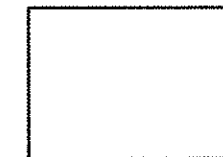
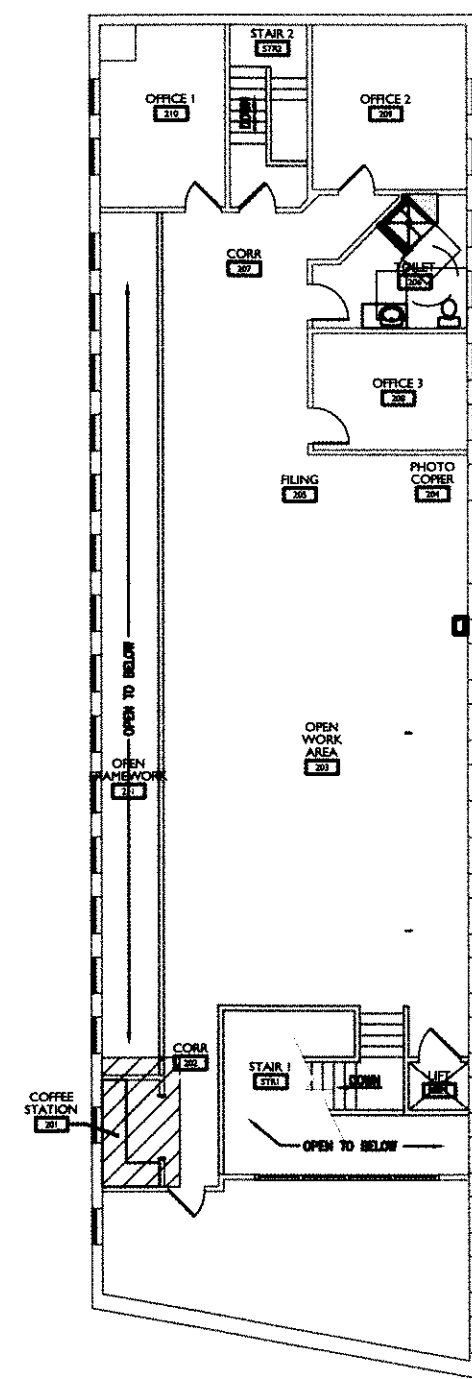
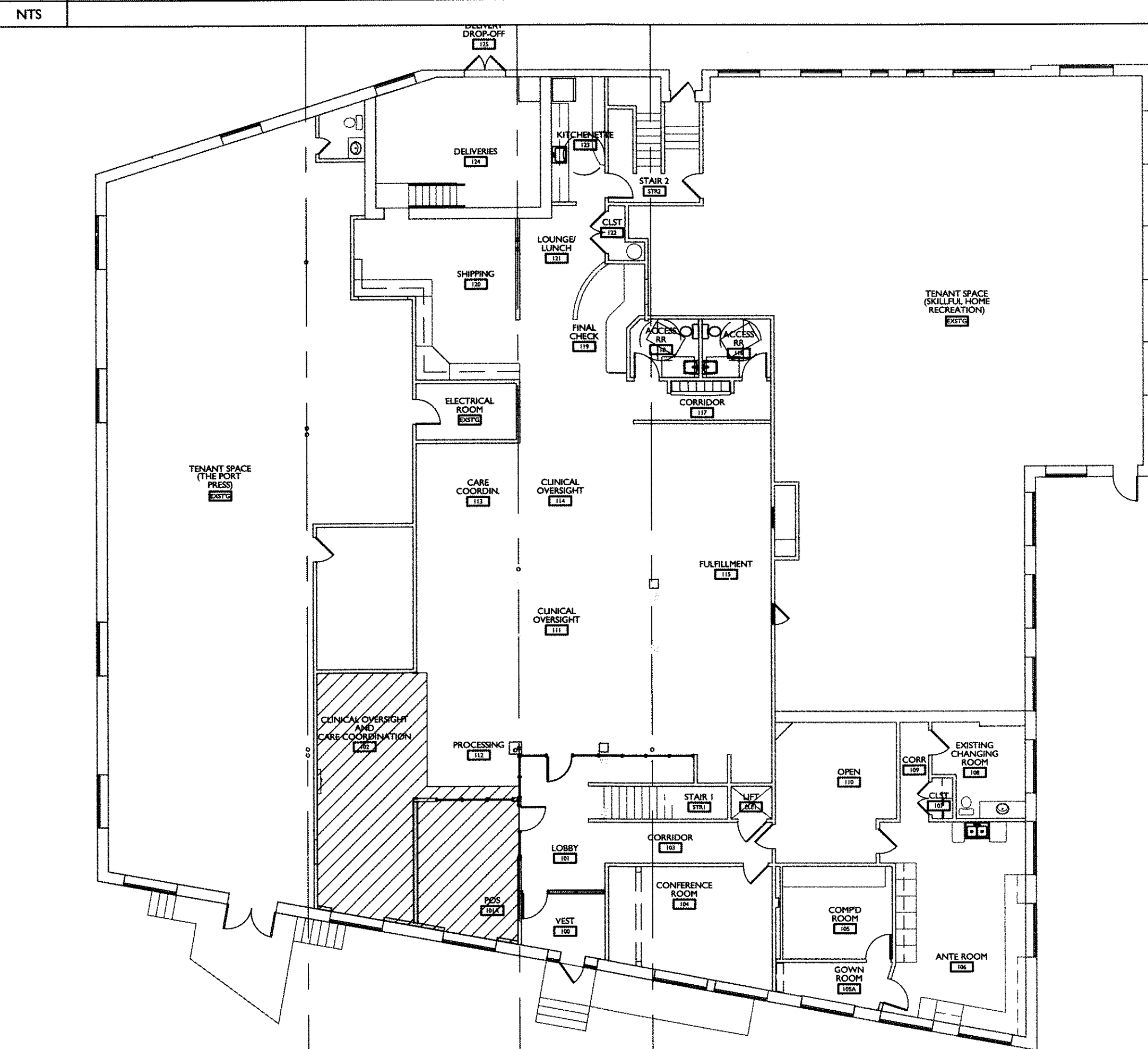
 RENOVATION AREA  
 EXISTING TO REMAIN



2009 NFPA: CODE DATA	
CH. 37 MERCANTILE (EXISTING BUILDING)	
TYPE OF CONSTRUCTION	TYPE V 000
OCCUPANT LOAD	FIRST FLOOR: 175 SECOND FLOOR: 49
MERCANTILE CLASS	B
EXTERIOR BEARING WALLS	0 HOUR
EXTERIOR NONBEARING WALLS	0 HOUR
INTERIOR BEARING WALLS	0 HOUR
COLUMNS	0 HOUR
BEAMS, GIRDERS, TRUSSES	0 HOUR
FLOOR CONSTRUCTION	0 HOUR
ROOF CONSTRUCTION	0 HOUR
MECHANICAL ROOMS	1 HOUR
TENANT SEPARATION	0 HOUR
APOTHECARY - FIRST FLOOR & SECOND FLOOR	8,132 S.F.
TOTAL BUILDING AREA	14,850 SF BUILDING TOTAL
BUILDING HEIGHT	20'-0" +/-
PROTECTION OF VERTICAL OPENINGS: 37.3.1	ALLOWED UNDER 37.3.1
FIRE SUPPRESSION	SPRINKLER SYSTEM; BUILDING OWNER TO INSTALL SUPERVISORY SYSTEM AS PART OF RENOVATION
FIRE EXTINGUISHERS	PER NFPA 2009
UNIT SEPERATION; MUBEC CONFLICT ADOPTED RULE NUMBER: 2011.250	0 HOUR
COMMON PATH OF TRAVEL LIMIT	100'
DEAD-END LIMIT	50'
TRAVEL DISTANCE LIMIT	250'
EXITS: 8.6.6 COMMUNICATING SPACE; 37.2.1.2	2 MEANS OF EGRESS: 1 ENCLOSED STAIR & 1 COMMUNICATING SPACE
CORRIDOR WIDTH	44"
STAIR ENCLOSURES	1 HOUR
EXIT ACCESS CORRIDORS	0 HOUR
FLAME SPREAD RATINGS:	
INTERIOR FINISH REQUIREMENTS (SPRINKLERED BLDG)	
WALLS AND CEILINGS	CLASS A, B OR C
EXIT ACCESS CORRIDORS	CLASS A OR CLASS B
INTERIOR FLOOR FINISH REQUIREMENTS	
EXITS	CLASS I OR CLASS II (REDUCTION PERMITTED OF ONE CLASS IN SPRINKLERED BUILDING)
CORRIDORS	
GENERAL NOTES	1. ALL PENETRATIONS OF SMOKE BARRIERS, PARTITIONS, FIRE RATED WALLS AND FLOORS SHALL BE SEALED WITH PROPER APPROVED MATERIALS

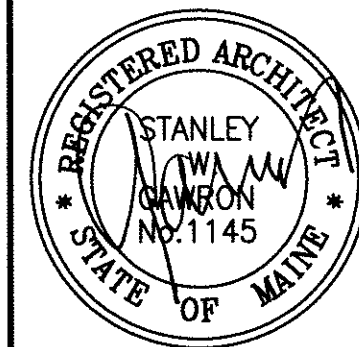
2009 IBC: CODE DATA	
M- Mercantile (EXISTING BLDG)	
OCCUPANT LOAD	FIRST FLOOR: 175 SECOND FLOOR: 49
USE GROUP CLASSIFICATION	MERCANTILE
TYPE OF CONSTRUCTION	TYPE V B
ACTUAL BUILDING AREA BY FLOOR	5,247 S.F. FIRST FLOOR - RENOVATED AREA IS 606 S.F.; 2,932 S.F. SECOND FLOOR - RENOVATED AREA IS 50 S.F.
TOTAL BUILDING AREA	14,850 SF
TABLE 503 BUILDING AREA LIMITATION - SQ. FT.	1 LEVEL @ 9,000 SF. AUTOMATIC SPRINKLER SYSTEM INCREASE BY 200 PERCENT
REQUIRED SEPARATION OF OCCUPANCIES (HOURS) TABLE 508.4	NO SEPARATION REQUIREMENTS
ACTUAL BUILDING HEIGHT	20'-0" +/-
EXIT ACCESS TRAVEL DISTANCE	250'-0"
DEAD END CORRIDORS	50'-0"
CORRIDOR WIDTH	44"
COMMON PATH OF EGRESS TRAVEL	75'
FIRE RATING:	
EXTERIOR BEARING WALLS	0 HOUR
INTERIOR BEARING WALLS	0 HOUR
NON-BEARING WALLS & PARTITIONS	0 HOUR
FLOOR CONSTRUCTION	0 HOUR
ROOF CONSTRUCTION	0 HOUR
CORRIDORS	0 HOUR
STAIR ENCLOSURES	1 HOUR
UNIT SEPARATION	0 HOUR
MECHANICAL ROOMS	1 HOUR
FLAME SPREAD RATINGS:	
INTERIOR WALL & CEILING FINISH REQUIREMENTS - TABLE 803.9	
EXIT ENCLOSURES & EXIT PASSAGEWAYS	B
CORRIDORS	C
ROOMS OR ENCLOSED SPACES	C
INTERIOR FLOOR FINISH REQUIREMENTS	
EXIT ENCLOSURES & EXIT PASSAGEWAYS	CLASS II
CORRIDORS	CLASS II
PORTABLE FIRE EXTINGUISHERS SECTION 906	
GENERAL NOTES	1. ALL PENETRATIONS OF SMOKE BARRIERS, PARTITIONS, FIRE RATED WALLS AND FLOORS SHALL BE SEALED WITH PROPER APPROVED MATERIALS 2. ALL WORK SHALL CONFORM TO LOCAL AND STATE CODES, ORDINANCES, AND REQUIREMENTS, ACCESSIBILITY PER A.D.A.A.G.

**J1 KEY PLAN - SECOND FLOOR**



**A1 KEY PLAN - FIRST FLOOR**

**A9 CODE REVIEW**



  
**Gawron Turgeon ARCHITECTS**  
 29 Black Point Road  
 Scarborough, Maine 04074  
 www.gawronturgeon.com  
 207-883-4307 tel / 207-883-0361 fax

**APOTHECARY BY DESIGN**  
 141 PREBLE STREET  
 PORTLAND, MAINE

**REVISIONS**

#	DATE	DESCRIPTION

DATE: 3.21.14  
 PROJECT #: 030314  
 DRAWN BY: BEF  
 CHECKED BY: MET  
 DRAWING SCALE: AS NOTED

SHEET TITLE  
 CODE REVIEW

**G102**  
© COPYRIGHT 1985-2012 REPRODUCTION OR USE OF THIS DOCUMENT WITHOUT WRITTEN PERMISSION OF GAWRON TURGEON ARCHITECTS IS PROHIBITED