

# APOTHECARY BY DESIGN

## SPECIALTY PHARMACY

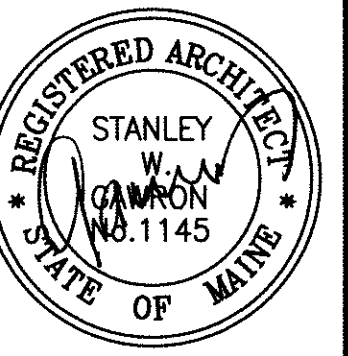
### MINOR RENOVATION

141 PREBLE STREET

PORTLAND, MAINE

#### DRAWING INDEX

| NO.                                     | DESCRIPTION                 | DATE |
|---|-----------------------------|------|
| G101                                    | TITLE SHEET & DRAWING INDEX |      |
| G102                                    | CODE REVIEW                 |      |
| 07.05.12 FINAL PRICING SET              |                             |      |
| A101 FLOOR PLAN, WALL PARTITIONS, NOTES |                             |      |



**Gawron Turgeon ARCHITECTS**  
 29 Black Point Road  
 Scarborough, Maine 04074  
 www.gawronturgeon.com  
 207-883-6307 tel 207-883-0361 fax

**APOTHECARY BY DESIGN**  
 141 PREBLE STREET  
 PORTLAND, MAINE

| REVISIONS |      |             |
|-----------|------|-------------|
| #         | DATE | DESCRIPTION |
|           |      |             |

|                |          |
|----------------|----------|
| DATE:          | 3.21.14  |
| PROJECT #:     | 030314   |
| DRAWN BY:      | LAP      |
| CHECKED BY:    | MET      |
| DRAWING SCALE: | AS NOTED |

SHEET TITLE  
 TITLE SHEET & DRAWING INDEX

**G101**

© COPYRIGHT 1985-2012  
 REPRODUCTION OR SALE OF THIS DOCUMENT WITHOUT WRITTEN PERMISSION OF GAWRON TURGEON ARCHITECTS IS PROHIBITED

#### ABBREVIATIONS

|              |                           |        |                                 |        |                          |
|--------------|---------------------------|--------|---------------------------------|--------|--------------------------|
| ALUM OR AL   | ALUMINUM WALL PANEL       | ALV    | GALVANIZED                      | S      | SOUTH                    |
| AMP          | ACOUSTICAL CEILING TILE   | GB     | GENERAL CONTRACTOR              | SC     | SHOWER CURTAIN           |
| ACT          | ACOUSTICAL CEILING TILE   | GC     | GYPSUM WALL BOARD               | SD     | SOAP DISPENSER           |
| BIT          | BITUMINOUS                | GWB    | HANDICAP                        | SCHED  | SCHEDULE                 |
| BM           | BENCH MARK                | HC     | HARDWOOD                        | SECT   | SECTION                  |
| BOT          | BOTTOM                    | HD WD  | HARDWARE                        | SHT    | SHEET                    |
| BRK          | BEARING                   | HDR    | HEADER                          | SIM    | SIMILAR                  |
| BRK          | BRICK                     | HDWE   | HARDWARE                        | SND    | SANITARY NAPKIN DISPOSAL |
| C            | CARPET                    | HM     | HOLLOW METAL                    | SQ     | SQUARE                   |
| CAB          | CABINET                   | HRZ    | HORIZONTAL                      | SSS    | SYNTHETIC SPORTS SURFACE |
| CB           | CHALK BOARD               | HT     | HEIGHT                          | STD    | STANDARD                 |
| CC           | CENTER TO CENTER          | ID     | INSIDE DIAMETER                 | STL    | STEEL                    |
| CH           | CONCRETE HARDENER         | IF     | INSIDE FACE                     | STRUCT | STRUCTURAL               |
| CJ           | CONTROL JOINT             | IN     | INCHES                          | SV     | SHEET VINYL              |
| CL           | CENTER LINE               | INSUL  | INSULATION                      | T      | TEMPERED (GLASS)         |
| CLG          | CEILING                   | INT    | INTERIOR                        | TB     | TACK BOARD               |
| CMU          | CONCRETE MASONRY UNITS    | LOC    | LOCATION                        | THK    | THICKNESS                |
| CONC         | CONCRETE                  | M      | MARBLE                          | TO     | TOP OF                   |
| CONT         | CONTINUOUS                | MAS    | MASONRY                         | TOB    | TOP OF BEAM              |
| CONST        | CONSTRUCTION              | MAX    | MAXIMUM                         | TOM    | TOP OF MASONRY           |
| CONTR        | CONTRACTOR                | MB     | MARKER BOARD                    | TOW    | TOP OF WALL              |
| CT           | CERAMIC TILE              | MECH   | MECHANICAL                      | TP     | TOILET PAPER DISPENSER   |
| DBL          | DOUBLE                    | MFR    | MANUFACTURER                    | TYP    | TYPICAL                  |
| DF           | DRINKING FOUNTAIN         | MIN    | MINIMUM                         | UNO    | UNLESS NOTED OTHERWISE   |
| DIA          | DIAMETER                  | MISC   | MISCELLANEOUS                   | VB     | VAPOR BARRIER            |
| DM           | DIMENSION                 | MO     | MASONRY OPENING                 | VCT    | VINYL COMPOSITION TILE   |
| DNA          | DOES NOT APPLY            | MR     | MOP RECEPTOR                    | VERT   | VERTICAL                 |
| DTL          | DETAIL                    | MROB   | MOISTURE RESISTANT GYPSUM BOARD | VWC    | VINYL WALL COVERING      |
| DWG          | DRAWING                   | MTL    | METAL                           | W      | WEST                     |
| E            | EAST                      | N      | NORTH                           | WC     | WATER CLOSET             |
| EA           | EACH                      | NA     | NOT APPLICABLE                  | WD     | WOOD                     |
| EF           | EACH FACE                 | NIC    | NOT IN CONTACT                  |        |                          |
| EJ           | EXPANSION JOINT           | NO     | NUMBER                          |        |                          |
| EL           | ELEVATION                 | NOM    | NOMINAL                         |        |                          |
| ELEC         | ELECTRICAL                | NTS    | NOT TO SCALE                    |        |                          |
| ELEV         | ELEVATOR                  | OA     | OVERALL                         |        |                          |
| EMHO         | ELECTROMAGNETIC HOLD OPEN | OC     | ON CENTER                       |        |                          |
| EQ           | EQUAL                     | OD     | OUTSIDE DIAMETER                |        |                          |
| EW           | EACH WAY                  | OPNG   | OPENING                         |        |                          |
| EWC          | ELECTRIC WATER COOLER     | OPF    | OPPOSITE                        |        |                          |
| EXIT OR (E)  | EXISTING                  | OF     | OUTSIDE FACE                    |        |                          |
| EXP          | EXPANSION                 | P      | PAINT                           |        |                          |
| EXT          | EXTERIOR                  | PTD    | PAINTED                         |        |                          |
| FD           | FLOOR DRAIN               | PL     | PLATE                           |        |                          |
| FDN          | FOUNDATION                | PLY WD | PLYWOOD                         |        |                          |
| FE           | FIRE EXTINGUISHER         | PNL    | PANEL                           |        |                          |
| FFE          | FINISH FLOOR ELEVATION    | P.A.   | PRESSURE TREATED                |        |                          |
| FIN          | FINISH                    | PT & D | PAPER TOWEL AND WASTE DISPENSER |        |                          |
| FIN FL OR FF | FINISH FLOOR              | FTN    | PARTITION                       |        |                          |
| FIN GR       | FINISH GRADE              | RD     | ROOF DRAIN                      |        |                          |
| FL           | FLOOR                     | RE     | REFER                           |        |                          |
| FR           | FIRE RATING               | REFR   | REFRIGERATOR                    |        |                          |
| FRMG         | FRAMING                   | REINF  | REINFORCED                      |        |                          |
| FT           | FEET (FOOT)               | REQD   | REQUIRED                        |        |                          |
| FTV          | FIELD VERIFY              | RM     | ROOM                            |        |                          |
| FWC          | FABRIC WALL COVERING      | RO     | ROUGH OPENING                   |        |                          |
| G            | GRANITE                   |        |                                 |        |                          |
| GA           | GAUGE                     |        |                                 |        |                          |

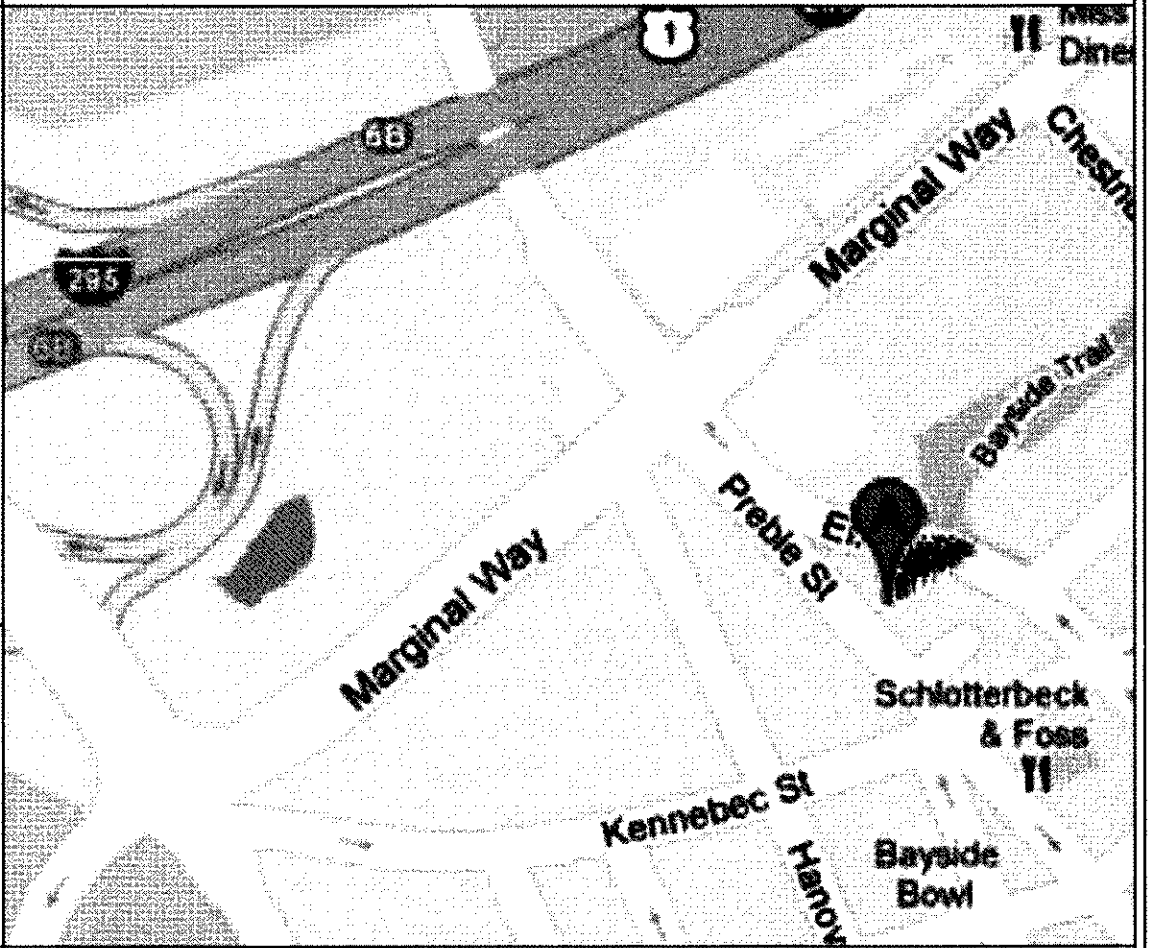
#### LEGEND

|  |                         |
|--|-------------------------|
|  | BUILDING SECTION MARKER |
|  | CEILING TAG             |
|  | COLUMN CENTER LINE      |
|  | DETAIL MARKER           |
|  | DOOR TAG                |
|  | EXTERIOR ELEVATION      |
|  | INTERIOR ELEVATION      |
|  | PLANT TAG               |
|  | REVISION CLOUD WITH TAG |
|  | ROOM TAG                |
|  | SECTION MARKER          |
|  | WALL TYPE               |
|  | WINDOW TAG              |

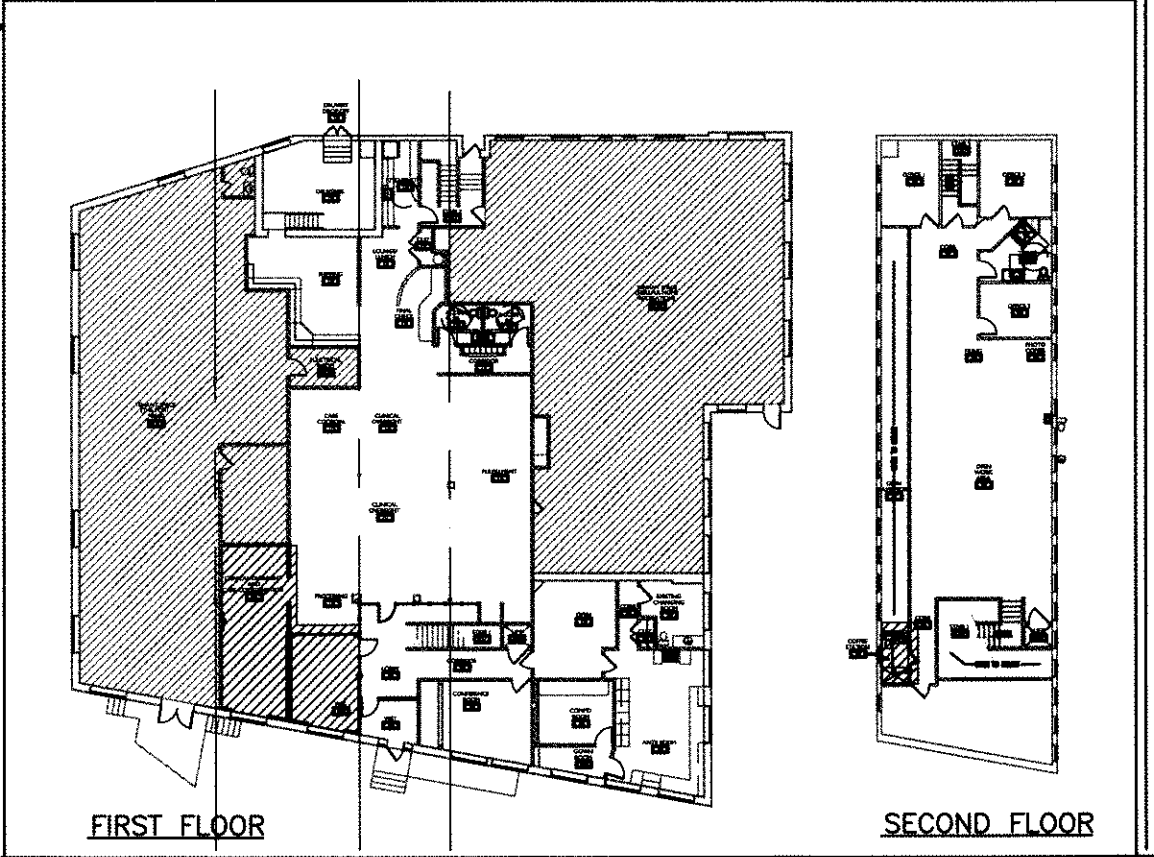
#### GENERAL NOTES

1. THE GENERAL CONTRACTOR SHALL VERIFY ALL EXISTING CONDITIONS AND DIMENSIONS, AND REPORT ANY DISCREPANCIES TO THE ARCHITECT. CONTRACTOR SHALL PROCEED WITH THE WORK ONLY AFTER DISCREPANCY HAS BEEN RESOLVED WITH THE ARCHITECT.
2. DO NOT ALTER OR PENETRATE ANY EXISTING STRUCTURAL ELEMENTS, EXTERIOR WALL COMPONENTS, OR FIRE RATED WALLS.
3. THE LOCATIONS OF DOORS NOT DIMENSIONED SHALL BE 6 INCHES FROM ADJACENT WALL.
4. THE BUILDING SHALL BE CONSTRUCTED TO CONFORM WITH ALL APPLICABLE CODES INCLUDING, BUT NOT LIMITED TO, THE LATEST EDITIONS OF IBC 2009, NFPA 101, & ANSI.
5. ALL WOOD IN CONTACT WITH CONCRETE SHALL BE PRESSURE PRESERVATIVE TREATED & ALL CONNECTIONS TO BE STAINLESS STEEL.
6. CONTRACTOR SHALL WORK FROM GIVEN DIMENSIONS AND LARGE SCALE DETAILS ONLY. **DO NOT SCALE THE DRAWINGS.**
7. NOT USED
8. EXISTING BUILDING COMPONENTS WHICH ARE AFFECTED BY NEW WORK AND DEMOLITION, OR WHICH MAY BE DAMAGED BY THE CONTRACTOR OR ANY SUBCONTRACTORS SHALL BE REPLACED OR RESTORED TO ORIGINAL CONDITION AND COLOR BY METHODS DESCRIBED IN THIS CONTRACT OR AS APPROVED BY THE ARCHITECT. THE GENERAL CONTRACTOR SHALL SEAL, PATCH AND FILL ANY FLOOR AND/OR WALL PENETRATIONS DUE TO DEMOLITION/CONSTRUCTION.
9. INSTALL BLOCKING BEHIND ALL SURFACE APPLIED FIXTURES, TRIM, CABINETS, SHELVING, COUNTER TOPS, AND GRAB BARS WHEN MOUNTED ON STUD WALLS.
10. NOT USED
11. CONTRACTOR SHALL PROVIDE ALARM SYSTEM TO MAINTAIN CONFORMANCE TO NFPA 13 & 101.
12. INSTALL MOISTURE RESISTANT GYPSUM BOARD IN LAVATORIES, JANITOR CLOSETS, AND ALL OTHER HIGH HUMIDITY AREAS.
13. FINISHES: FINISHES OTHER THEN THE STANDARD FINISHES ARE ALL INDICATED ON THE DRAWINGS, CEILING FINISHES ARE SHOWN ON THE REFLECTED CEILING PLANS AND ALL OTHER FINISHES ARE SHOWN ON THE INTERIOR FINISH LEGEND AND SCHEDULE AND/OR INTERIOR ELEVATIONS. FINISHES INDICATED FOR A PARTICULAR ROOM OR SPACE ARE APPLICABLE FOR THE ENTIRE ROOM OR SPACE, UNLESS OTHERWISE NOTED.
14. ALL EXPOSED SURFACES ARE TO BE PAINTED, WHETHER OR NOT INDICATED ON THE DRAWINGS, EXCEPT AS FOLLOWS: WHERE SPECIAL COATINGS ARE INDICATED; PREFINISHED ITEMS, CONCEALED SURFACES, OPERATING PARTS, AND LABELS. IF PREFINISHED, PAINTING THE FOLLOWING: EXPOSED MECHANICAL DUCTWORK, WALL DIFFUSERS, GRILLES AND LOUVERS, ROOF TOP MECHANICAL EQUIPMENT, AND SPEAKER GRILLES. FINISHED METAL SURFACES, EXCEPT AS LISTED ABOVE. SEE SPECIFICATIONS ON DRAWINGS IDENTIFYING THE TYPES OF PAINTS AND SPECIALTY COATINGS TO BE USED IN ACCORDANCE WITH MATERIAL BEING PAINTED OR COATED.
15. BUILDING INSULATION: PROVIDE AS INDICATED ON WALL DETAILS AND IN ACCORDANCE WITH PARTITION TYPES, WHETHER OR NOT SHOWN IN DETAILS AND DRAWINGS. FOR DRAWING CLARITY, INSULATION MAY NOT BE SHOWN, EVEN IF IT IS PROVIDED.
16. CONTRACTOR SHALL SUBMIT SAMPLES OF ALL INTERIOR FINISHES FOR ARCHITECT'S REVIEW.
17. THE DESIGN AND INSTALLATION OF THE HVAC, PLUMBING SYSTEMS, ELECTRICAL SYSTEMS, AND FIRE PROTECTION SYSTEMS SHALL BE PROVIDED THROUGH A DESIGN/BUILD CONTRACT UNDER THE GENERAL CONTRACTOR.
18. NOT USED
19. GENERAL CONTRACTOR SHALL SUPPLY POWER AND CONDUITS WITH PULL-STRINGS FOR DATA AND TELEPHONE TO ALL OWNER SUPPLIED WORKSTATIONS. THE DESIGN AND INSTALLATION OF THE DATA AND TELEPHONE SYSTEMS SHALL BE THE RESPONSIBILITY OF THE TENANT. GENERAL CONTRACTOR TO PROVIDE CONDUIT WITH PULL-STRINGS TO ALL LOCATIONS RECEIVING DATA AND TELEPHONE.

#### SITE LOCATION MAP



#### SITE LOCATION MAP



#### PROJECT DIRECTORY

|  |   |   |
|--|---|---|
| <b>OWNER/TENANT:</b><br>APOTHECARY BY DESIGN<br>84 MARGINAL WAY<br>PORTLAND, MAINE 04101 | <b>ARCHITECT:</b><br>GAWRON TURGEON ARCHITECTS<br>29 BLACK POINT ROAD<br>SCARBOROUGH, MAINE 04074<br>207-883-6307 | <b>CONSTRUCTION MANAGER:</b><br>MONAGHAN WOODWORKS, INC.<br>100 COMMERCIAL STREET, SUITE 311<br>PORTLAND, MAINE 04101<br>207-775-2683 |
| <b>MECHANICAL CONTRACTOR:</b><br>DESIGN BUILD  | <b>ELECTRICAL CONTRACTOR:</b><br>DESIGN BUILD   |   |