

**Gawron  
Turgeon**  
ARCHITECTS

29 Black Point Road  
Scarborough, Maine 04074  
www.gawronturgeon.com  
207-883-6307 tel 207-883-0361 fax

**APOTHECARY BY DESIGN**  
141 PREBLE STREET  
PORTLAND, MAINE

**REVISIONS**

#	DATE	DESCRIPTION

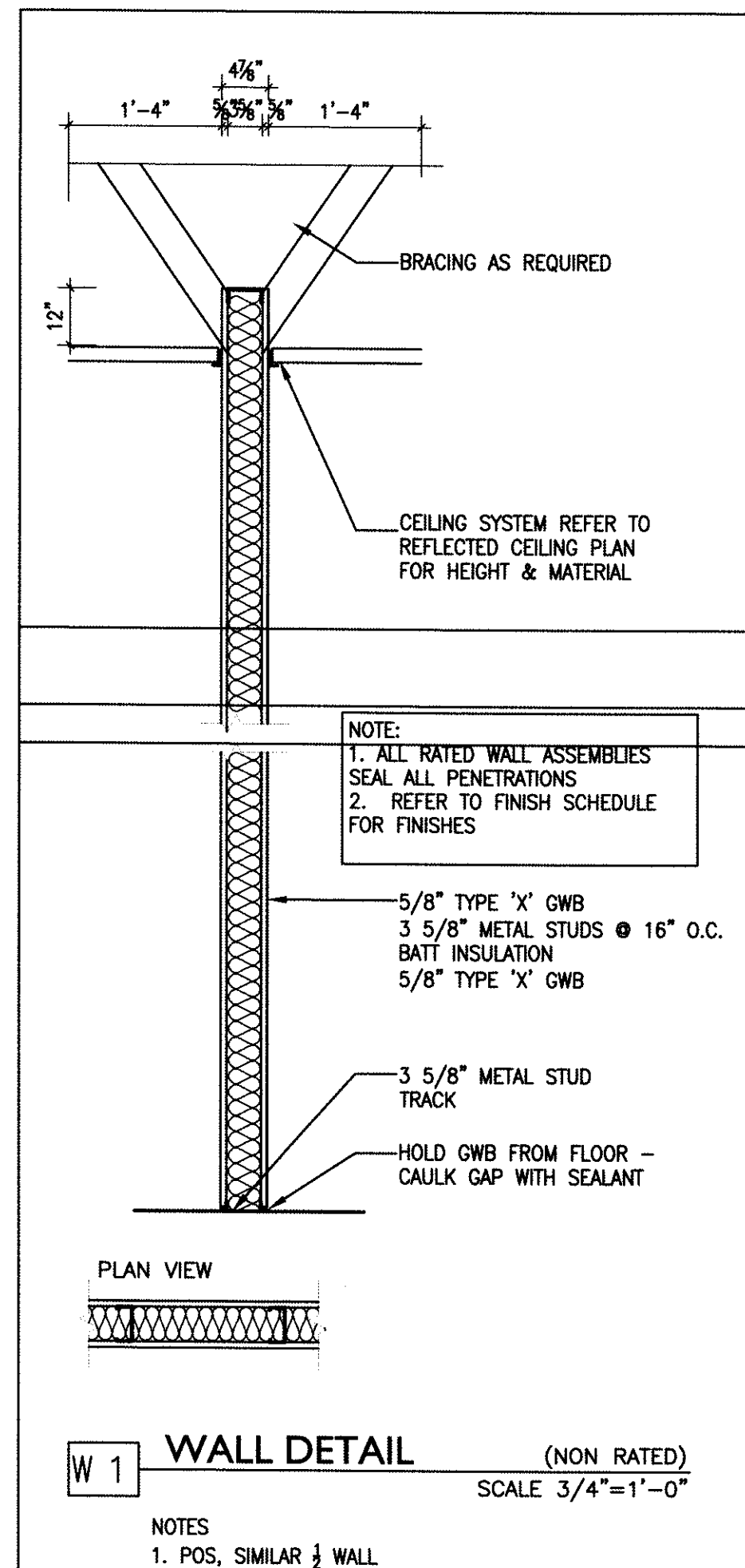
DATE	3.21.14
PROJECT #	030314
DRAWN BY:	BEF
CHECKED BY:	MET
DRAWING SCALE	AS NOTED

**SHEET TITLE**

FLOOR PLANS,  
WALL PARTITIONS  
NOTES

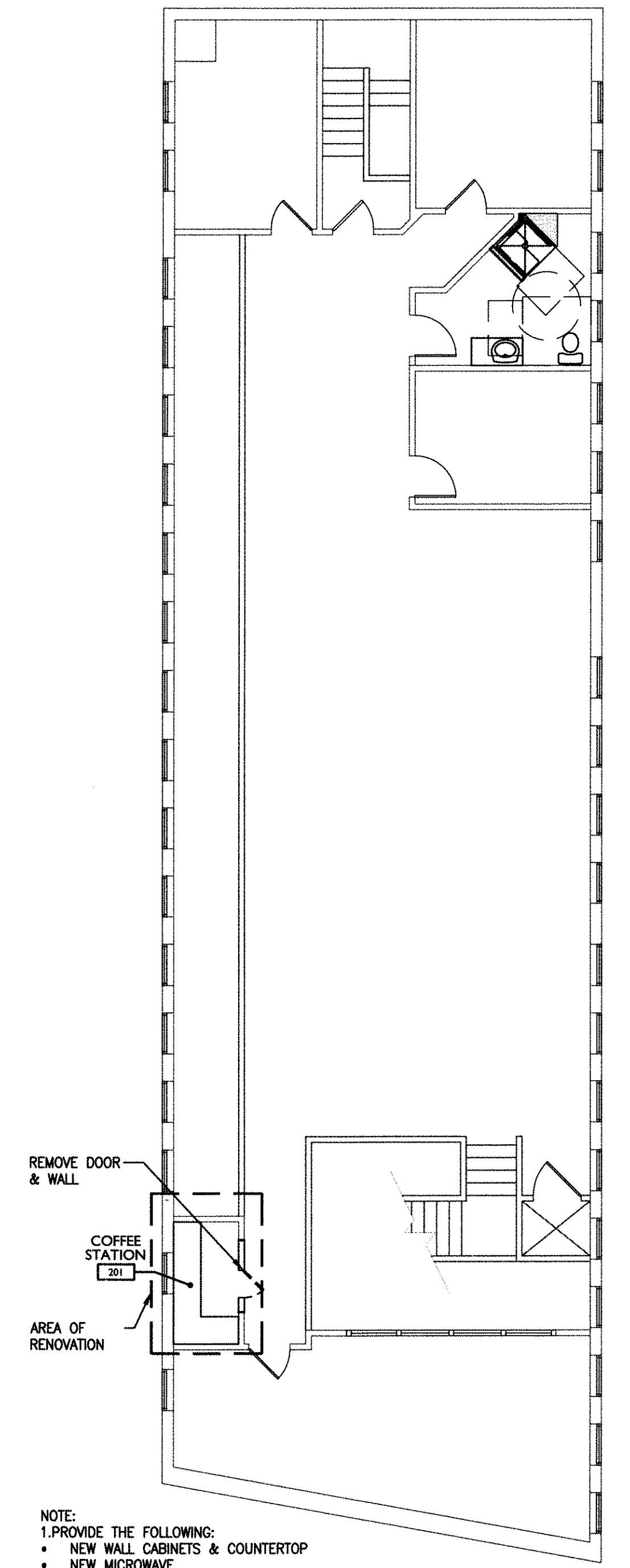
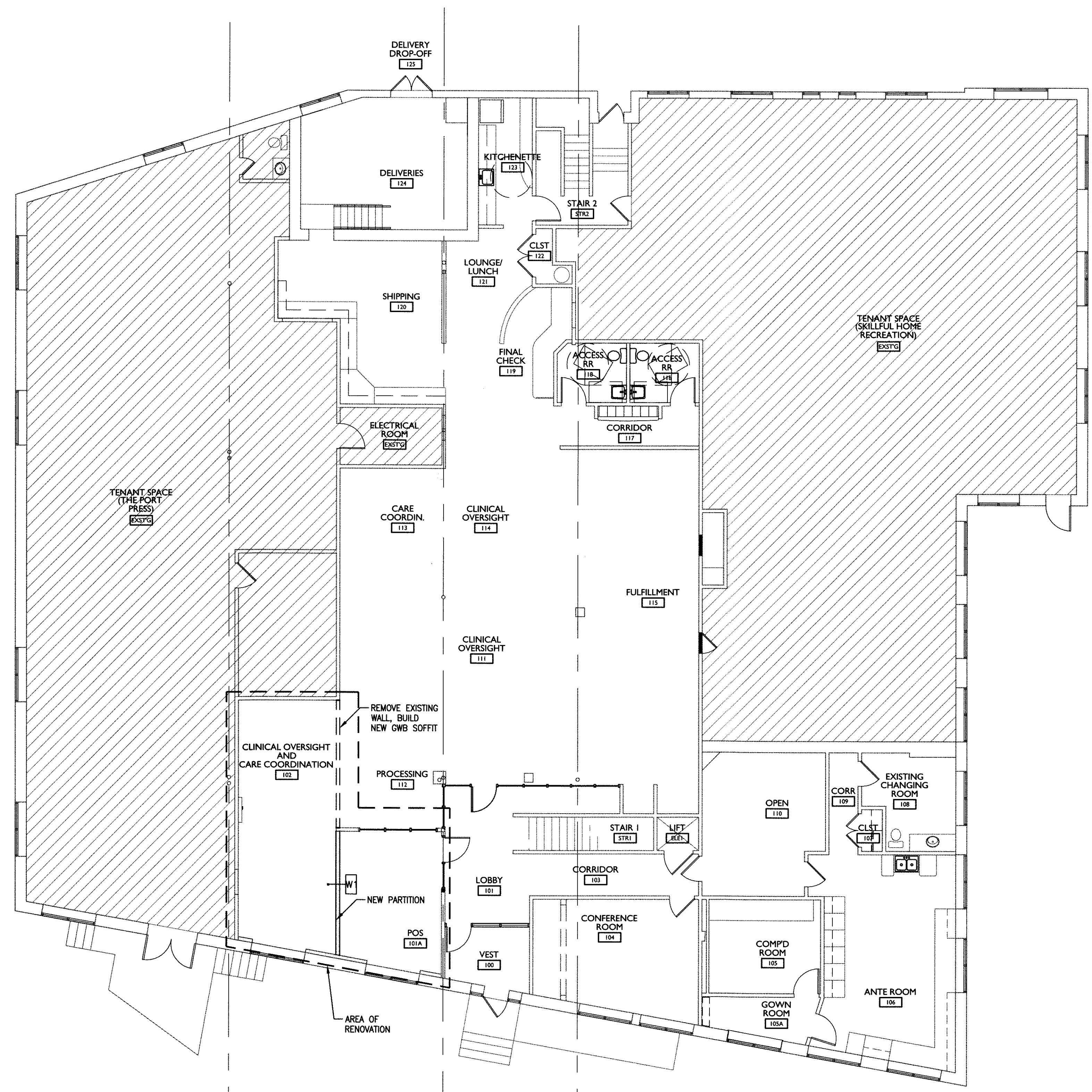
**A101**

© COPYRIGHT 1985-2012  
REPRODUCTION OR USE OF THIS  
DOCUMENT WITHOUT WRITTEN  
PERMISSION OF GAWRON TURGEON  
ARCHITECTS IS PROHIBITED.



**D18 PARTITION TYPES**  
3/4"=1'-0"

- NOTES
1. PROVIDE 3" PLYWOOD BLOCKING BEHIND ALL OWNER SUPPLIED SLAT WALL SYSTEM. COORDINATE WITH OWNER & SUPPLIER ALL LOCATIONS AND DIMENSIONS PRIOR TO INSTALLATION.
  2. REFER TO PLAN FOR FIRE EXTINGUISHER LOCATIONS.
  3. KITCHEN CABINETS BY ARMSTRONG; DOORSTYLE: ARBORCREST, FINISH: CINNAMON



**A1 SECOND FLOOR PLAN**  
1/8"=1'-0"

**A6 FIRST FLOOR PLAN**  
1/8"=1'-0"

**A18 NOTES**