

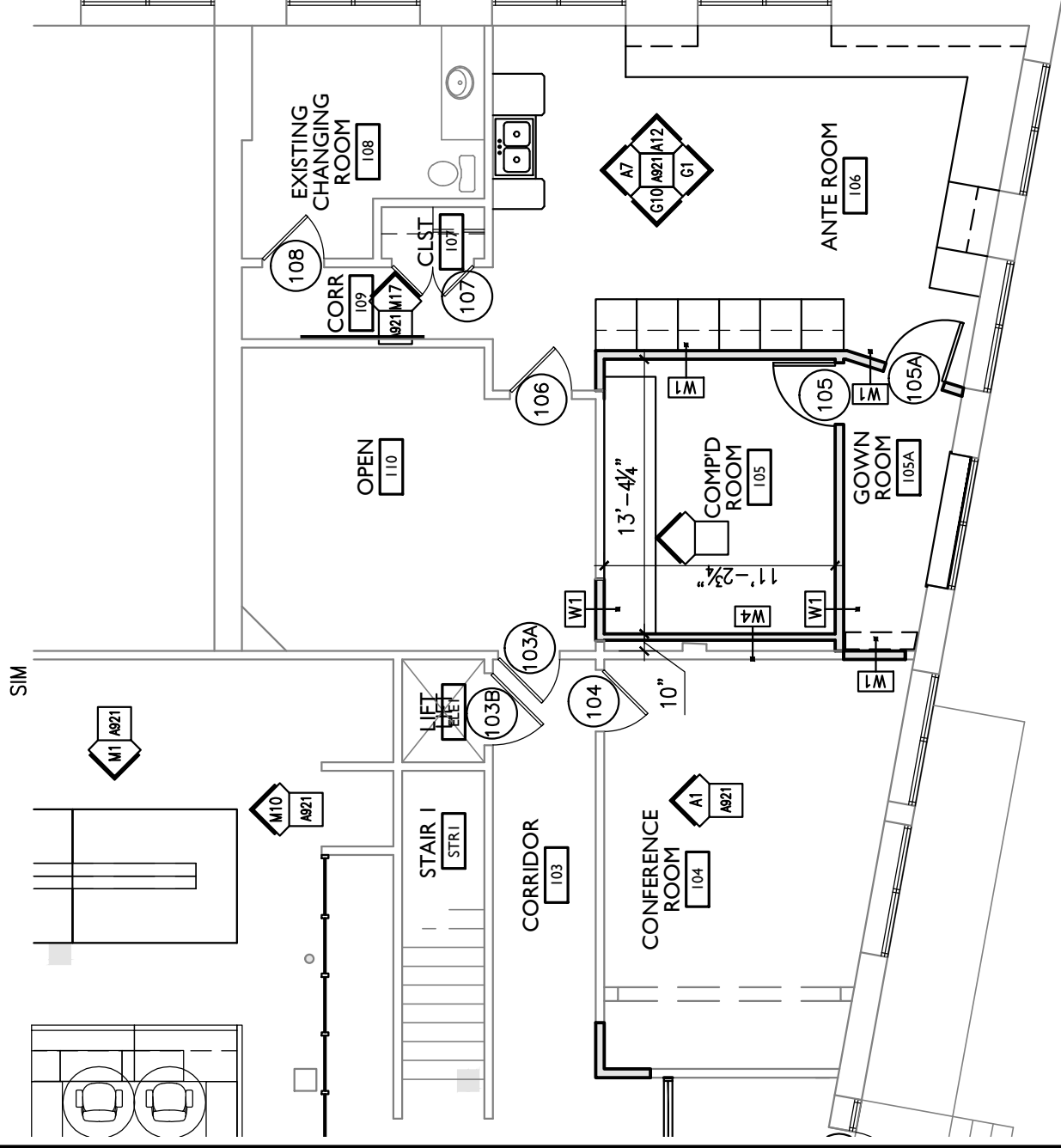
- 01 REMOVE DOOR, FRAME AND ALL ASSOCIATED HARDWARE AS REQUIRED FOR NEW CONSTRUCTION
- 02 REMOVE WALL AS REQUIRED FOR NEW CONSTRUCTION.
- 04 REMOVE ALL CEILING GRIDS, TILE AND ASSOCIATED HARDWARE AS REQUIRED FOR NEW CONSTRUCTION.
- 05 REMOVE ALL WALL FINISHES AND ASSOCIATED ADHESIVES AS REQUIRED FOR A SMOOTH AND LEVEL APPLICATION OF NEW FINISHES
- 06 REMOVE ALL FLOOR COVERING AND ASSOCIATED ADHESIVES, SOIL AND DEBRIS AND PREPARE EXISTING SUBFLOOR AS REQUIRED FOR SMOOTH AND LEVEL APPLICATION OF NEW FLOORING.
- 07 REMOVE WALL BASE AND ASSOCIATED ADHESIVES. PREPARE EXISTING WALL AS REQUIRED FOR SMOOTH AND LEVEL APPLICATION OF NEW BASE - SALVAGE ALL EXISTING WOOD BASE FOR RE-USE
- 12 REMOVE EXISTING WINDOW TREATMENTS.
- 13 ALL EXISTING WINDOW TREATMENTS TO REMAIN - PROTECT DURING CONSTRUCTION
- 14 REMOVE IT EQUIPMENT
- 19 REMOVE LIGHTING
- 21 REMOVE PLYWOOD PANELS

AI DEMOLITION FLOOR PLAN

BI DEMO LEGEND

1/8"=1'-0" COMPOUNDING LAB REVISION

NA COMPOUNDING LAB REVISION



FLOOR PLAN LEGEND

- 01 SHELVING UNIT BY ABD.
- 02 LEXAN WINDOW STOOL - INSTALL AND SEAL AS REQUIRED TO MEET ISO7 REQUIREMENTS.
- 03 LEXAN WINDOW INSERT - PROVIDE REMOVABLE CLEAR LEXAN 1/2" THK SHEET - GASKET AS REQUIRED TO MEET ISO7.
- 04 NOT USED
- 05 DUCT CHASE (NON-RATED) - COORDINATE DIMENSIONS w/ OWNER, MECHANICAL CONTRACTOR & EQUIPMENT SUPPLIER.
- 06 DOUBLE BOWL STAINLESS STEEL SINK & EYEWASH STATION.

A2 FLOOR PLAN

A2 PLAN LEGEND

1/8"=1'-0" COMPOUNDING LAB REVISION

NA COMPOUNDING LAB REVISION

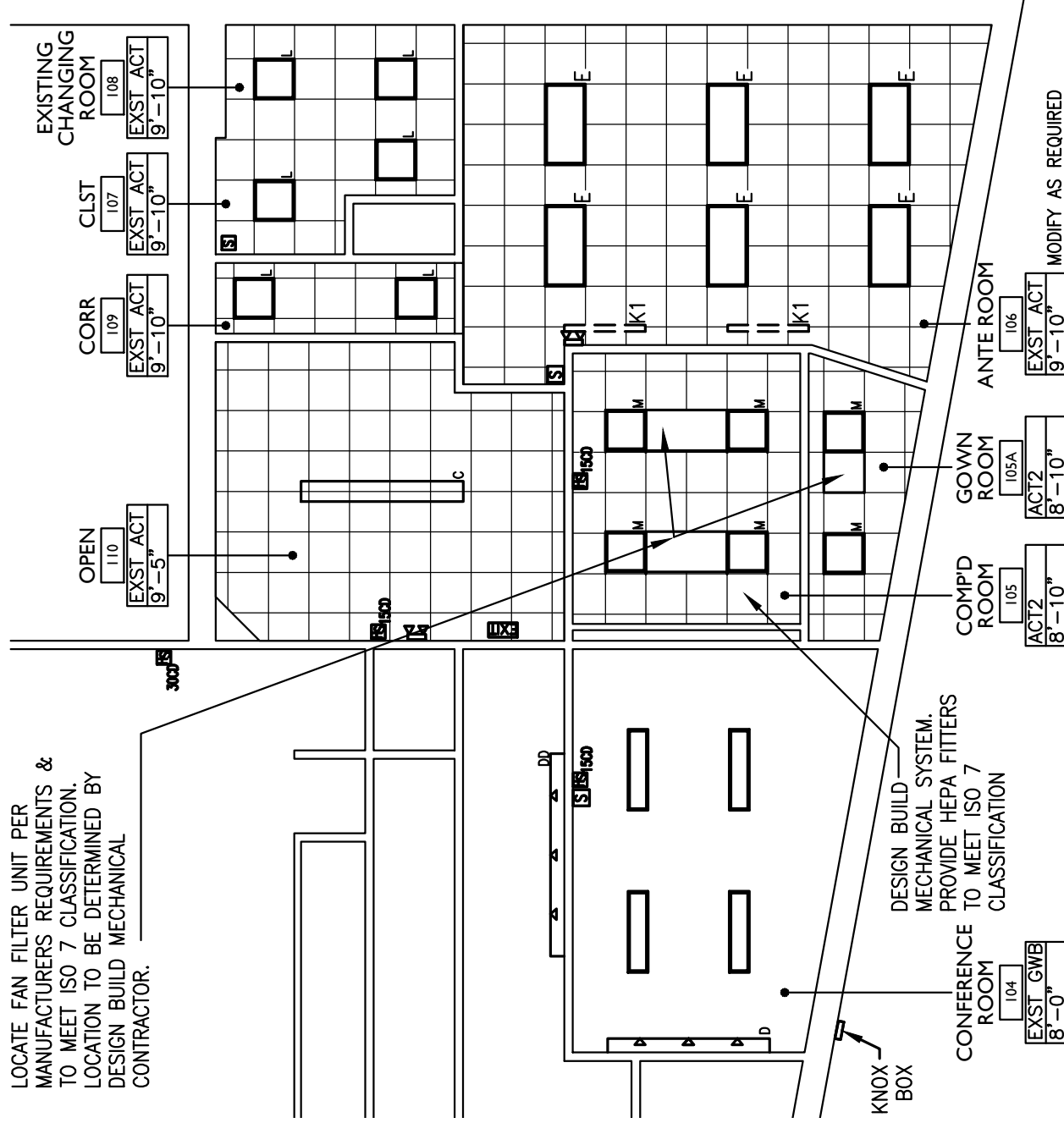
DATE:	11.20.12
PROJECT #:	120111
DRAWN BY:	DMR
DRAWING SCALE:	AS NOTED

CSK - 9
 Sheet 1 of 6
 REVISED 11.20.12

APOTHECARY BY DESIGN
 141 PREBLE ST, PORTLAND
 COMPOUNDING LAB - RELOCATION / REVISION



LOCATE FAN FILTER UNIT PER MANUFACTURERS REQUIREMENTS & TO MEET ISO 7 CLASSIFICATION. LOCATION TO BE DETERMINED BY DESIGN BUILD MECHANICAL CONTRACTOR.



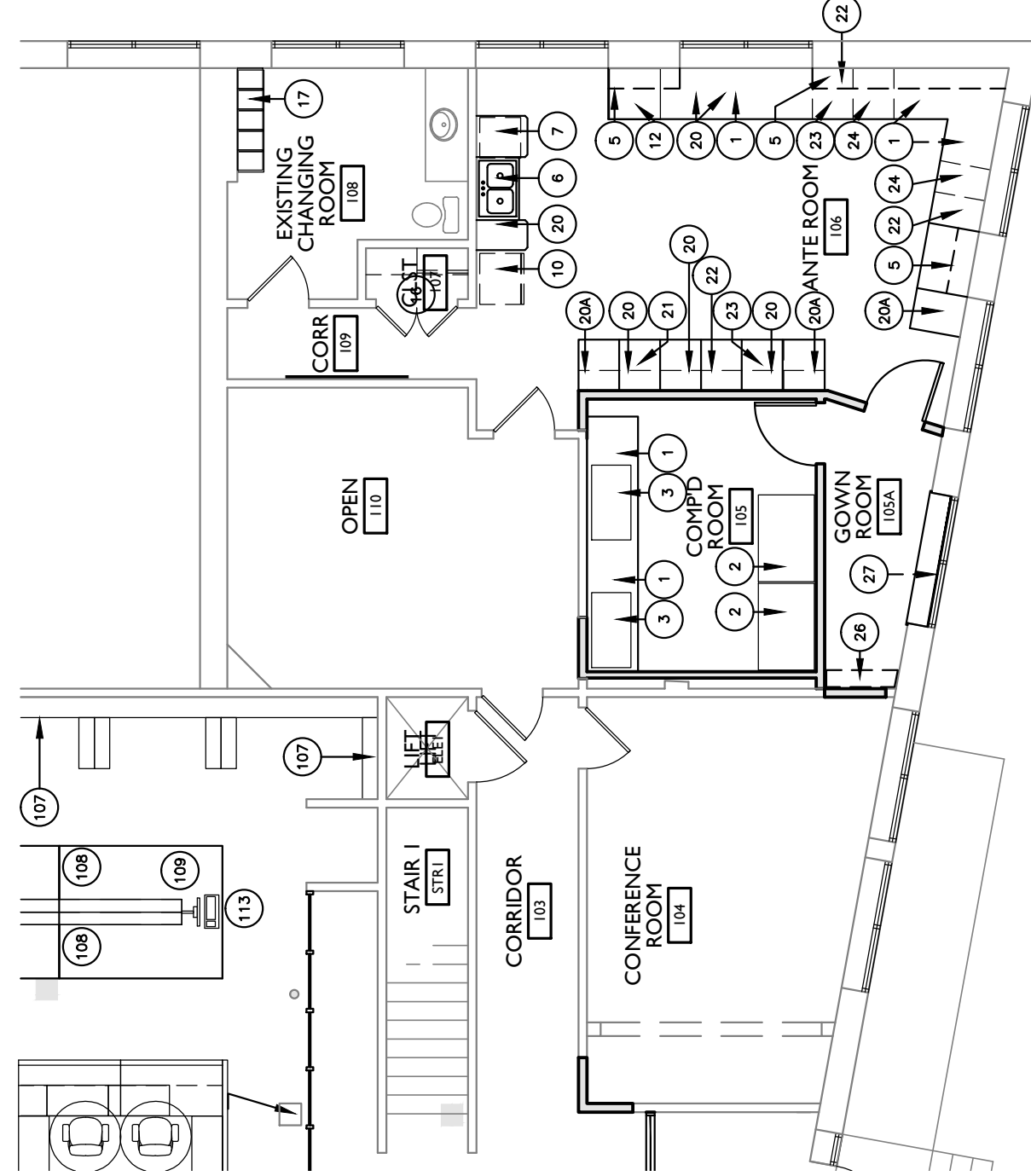
AI REFLECTED CEILING PLAN

1/8"=1'-0" COMPOUNDING LAB REVISION

BI RCP LEGEND

NA COMPOUNDING LAB REVISION

- C RELOCATED EXISTING 8' SUSPENDED FIXTURE
- E REUSE EXISTING FIXTURE
- M CLEAN ROOM SEALED FIXTURE
- D TECH LIGHTING MONO-RAIL SYSTEM W/ AERO HEAD-SODA
- DD TECH LIGHTING WALL MONO RAIL W/ AERO HEAD-SODA, MONO RAIL TO PROJECT 12" OFF FROM WALL. CENTER WALL MONORAIL ON INTERIOR WINDOWS.
- K1 OWNER SUPPLIED FIXTURE - GC TO INSTALL
- ACT2 ARMSTRONG COMMERCIAL CEILING
- COMPOUNING LAB ONLY & GOWN ROOM ONLY
- MATERIAL HEIGHT
- EXIT DIRECTIONAL EXIT SIGNAGE
- EXIT EXIT SIGNAGE
- IS FIRE ALARM VISUAL STROBE
- IS15 FIRE ALARM AUDIO/VISUAL STROBE - NUMERAL DENOTES CANDELA RATING
- EMERGENCY BATTERY UNIT - 2 HEADS
- SS SPRINKLER SUPERVISORY
- S SMOKE DETECTOR
- FACP FIRE ALARM CONTROL PANEL
- F FIRE PULL



- 1 COUNTER (ø 40" A.F.F. UNLESS OTHERWISE NOTED)
- 2 GLOVE BOX, FREE STANDING (51"W X 33"D X 80"H)
- 3 POWDER HOOD, COUNTERTOP (44"W X 23"D X 44"H)
- 4 WALL SHELVES, HEIGHT ADJUSTABLE/LOWER SHELF FIXED TO SUPPORT UNDER-SHELF LIGHTS
- 5 SLAT WALL WITH ACCESSORIES, 2 SHELVES
- 6 LARGE DOUBLE BASIN SINK WITH HAND SPRAYER AND EYE WASH STATION W/ ADA ENCLOSURE
- 7 DISHWASHER, OWNER TO SUPPLY / GC TO INSTALL
- 8 CHECK STATION WITH UNDER-SHELF LIGHT
- 9 NOT USED
- 10 REFRIGERATOR, OWNER TO SUPPLY / GC TO INSTALL
- 11 NOT USED
- 12 OVEN, COUNTERTOP, ELECTRICAL REQUIREMENTS 208V
- 13 WINDOW - 3'-0" X 4'-0"
- 14 NOT USED
- 15 NOT USED
- 16 CLOSET WITH HAT SHELF AND CLOTHES ROD 9FOR LABORATORY COATS)
- 17 LOCKERS, DOUBLE TIER, 12"D X 18"W X 36"H, (72"H OVERALL), 6" ENCLOSED BASE AND SLOPED TOP
- 18 APOTHECARY CUSTOM SHADE
- 19 EYE WASH STATION
- 20 WHITE MELAMINE CABINETS W/ 2 ROLL OUT SHELVES AND DRAWERS
- 20A VILE DRAWER
- 21 MOVABLE LIGHT FIXTURE
- 22 OPEN FOR TRASH BELOW
- 23 COMPUTER AND PHONE ON COUNTERTOP
- 24 OPEN CABINET W/ SHELVES
- 25 NOT USED
- 26 GC TO INSTALL OWNER SUPPLIED SHELVING UNIT
- 27 GOWN ROOM SHADE TO MEET ISO7 REQUIREMENTS

NOTES
 1. COPPER WILL NOT BE LOCATED IN THE ANTE ROOM
 2. PROVIDE FIBERGLASS REINFORCED PANELS (FRP) AND ASSOCIATED TRIM PIECES FOR COMPLETE SYSTEM AT ALL WALLS IN COMPOUNDING LAB 105.

A2 EQUIPMENT PLAN

1/8"=1'-0" COMPOUNDING LAB REVISION

B2 EQUIP LEGEND

NA COMPOUNDING LAB REVISION

DATE:	11.20.12
PROJECT #:	120111
DRAWN BY:	DMR
DRAWING SCALE:	AS NOTED

CSK - 9
 Sheet 2 of 6
 REVISED 11.20.12
© COPYRIGHT 1985-2008
 REPRODUCTION OR REUSE OF THIS DOCUMENT WITHOUT
 WRITTEN PERMISSION OF GAWRON TURGEON ARCHITECTS
 IS PROHIBITED

APOTHECARY BY DESIGN
 141 PREBLE ST, PORTLAND
 COMPOUNDING LAB - RELOCATION / REVISION



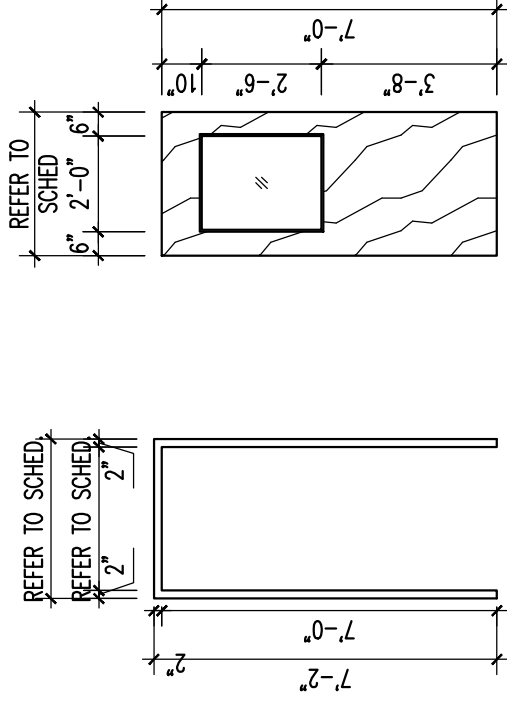
DOOR SCHEDULE

DOOR SCHEDULE ABBREVIATIONS

DOOR SCHEDULE ABBREVIATIONS																			
EHO		ELECTRO. HOLD OPENER		NO		NUMBER		WOOD (SOLID)											
HM	HOLLOW METAL	ES	ELECTRIC STRIKE	ES	ES	ES	ES	WG	WIRE GLASS										
INS	INSULATED	TEMP	TEMPERED	TEMP	TEMPERED	TEMP	TEMPERED	S	STAIN										
MTL	METAL	THK	THICKNESS	THK	THICKNESS	THK	THICKNESS	P	PAINT										
DOORS																			
NO	TYPE	SIZE	THK.	MAT.	FINISH	REMARKS	TYPE	MAT.	DETAILS	HEAD	JAMB	FINISH	REMARKS	MAT.	SILL	HEIGHT	RATING	HARWARE	DOORS
104	NA	NA	NA	NA	STN	NOTE 1	1	HM	PTD	HI	JI	PTD	NOTE 1	NA	NA	NA		HW5	104
105	G	3'-0" x 7'-0"	1 3/4"	WD	STN	NOTE 1	1	HM	PTD	HI	JI	PTD	NOTE 1	NA	NA	NA		HW11	105
105A	G	3'-0" x 7'-0"	1 3/4"	WD	STN	NOTE 1	1	HM	PTD	HI	JI	PTD	NOTE 1	NA	NA	NA		HW11	105A

NOTES:

1. PROVIDE GASKETS & DOOR UNDERCUT CONDITION AS REQUIRED TO MEET ISO7 - CLEAR GLASS



1

FLUSH FRAME HOLLOW METAL
INTERIOR - NON THERMAL

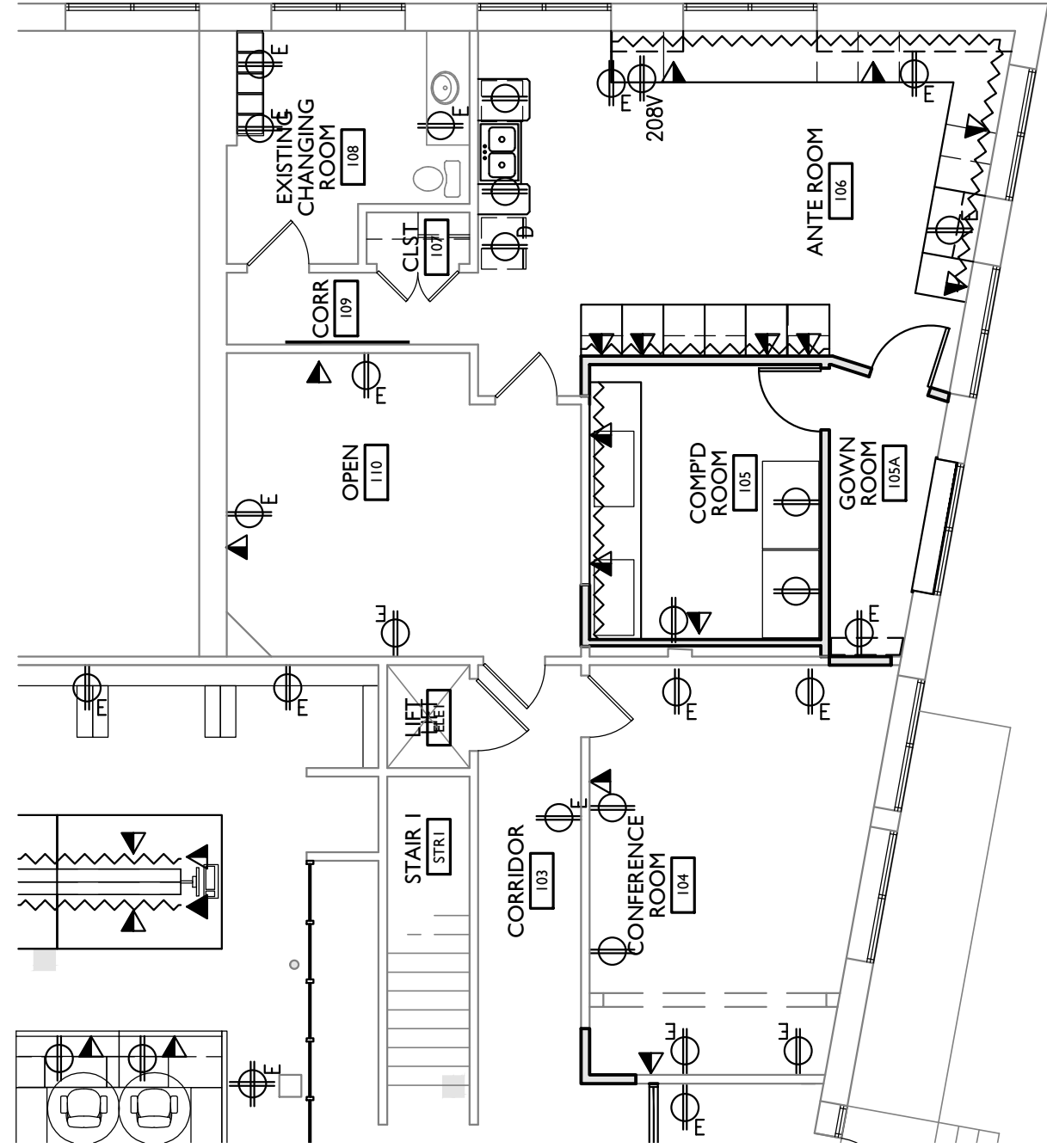
G

SOLID CORE
DOOR

AI

1/8" = 1'-0"

COMPOUNDING LAB REVISION



LEGEND - ELECTRICAL / TELEPHONE / DATA

- OUTLET
- ⊖ EXISTING OUTLET
- ⊖ DEDICATED OUTLET
- ⊖ QUAD OUTLET
- ⊖ EXISTING QUAD OUTLET
- △ TELEPHONE - WALL MOUNTED
- ▲ TELEPHONE/DATA
- ▲ DATA
- ~ POWER STRIP
- ELECTRICAL PANEL

1. REFER TO FLOOR PLAN FOR SYSTEM FURNITURE LAYOUT.

2. REFER TO FLOOR PLAN FOR CUSTOM CABINERY LAYOUT

3. OVEN- 208V; 60 HZ; 2700 W.

A2

1/8" = 1'-0"

COMPOUNDING LAB REVISION

ELECTRICAL PLAN

B2

1/8" = 1'-0"

COMPOUNDING LAB REVISION

EQUIP LEGEND

DATE:	11.20.12
PROJECT #:	120111
DRAWN BY:	DMR
DRAWING SCALE:	AS NOTED

CSK - 9
Sheet 3 of 6
REVISED 11.20.12

© COPYRIGHT 1985-2008
REPRODUCTION OR RELEASE OF THIS DOCUMENT WITHOUT
WRITTEN PERMISSION OF GAWRON TURGEON ARCHITECTS
IS PROHIBITED

APOTHECARY BY DESIGN
141 PREBLE ST, PORTLAND
COMPOUNDING LAB - RELOCATION / REVISION

29 Black Point Road
Scarborough, Maine 04074
www.gawronturgeon.com
207-883-6307 tel 207-883-0361 fax

INTERIOR FINISH SCHEDULE

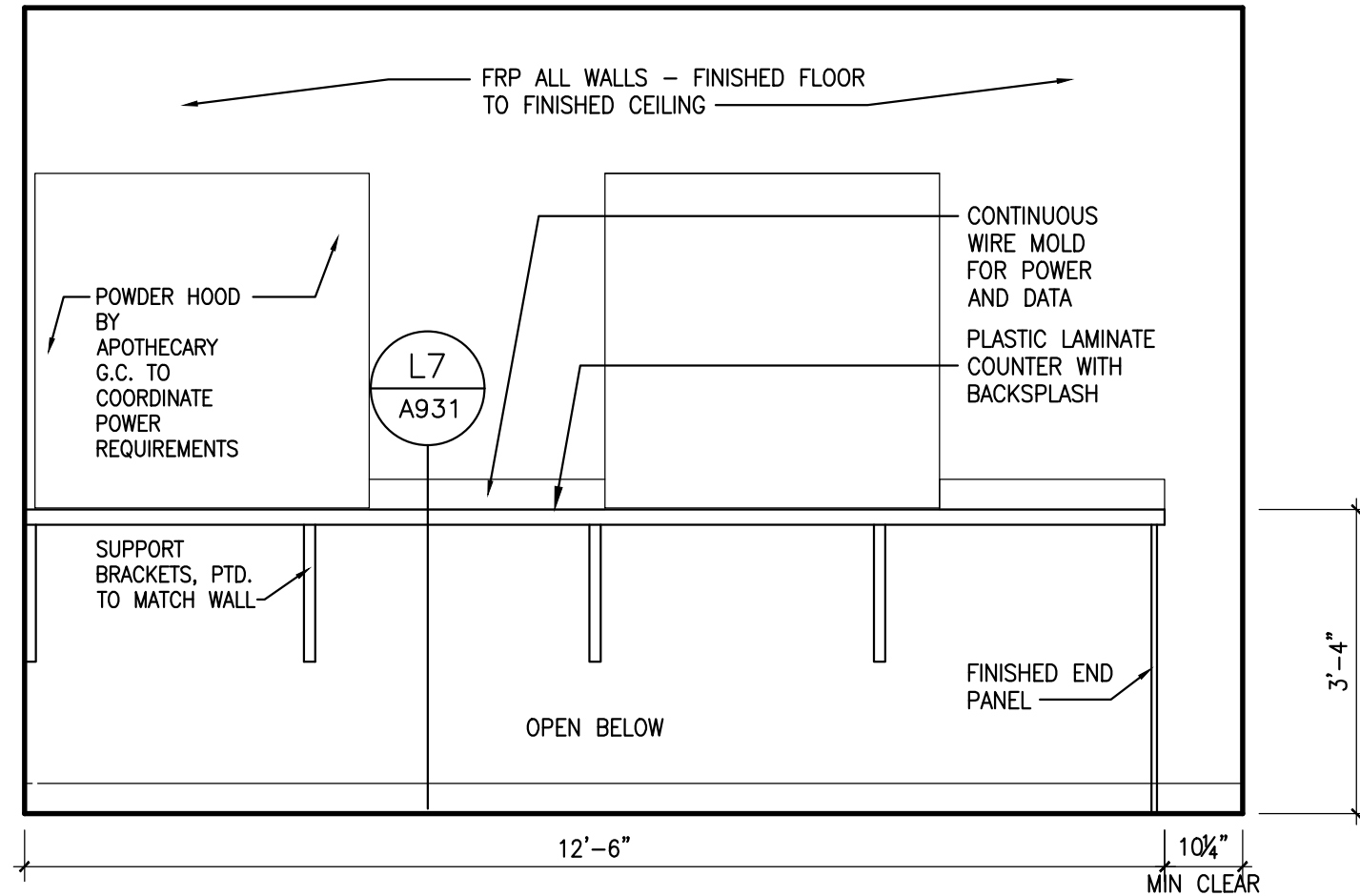
120111

Apothecary by Design- Portland

ABBREVIATIONS

C	CARPET	SYD	SQUARE YARD(S)
SV	SHEET VINYL	EM	ENTRY MAT
LKS	LOCKERS	FRP	FIBERGLASS REINFORCED PANEL
G	GROUT	T	TILE
NA	NOT APPLICABLE	TBD	TO BE DETERMINED
P	PAINT	VCB	VINYL COVE BASE
PL	PLASTIC LAMINATE	VP	VINYL PLANK
R	RESILIENT/ RUBBER/ RUBBER TREAD	RP	RESIN PANEL
SC	SEALED CONCRETE	WC	WALL COVERING (VINYL/ PAPER)
SF	SQUARE FEET	MEL	MELAMINE
CAB	CABINETS	TB	TILE BASE
SS	SOLID SURFACE/ NATURAL STONE	WD	WOOD

Room Information		Floor		Walls					Trim				Countertop/		Remarks
		Code order: primary / secondary or accent		Code order: above chairrail / below chairrail									Worksurface/		
													Cabinets		
Room #	Room Name	Floor	Grout	North Wall	East Wall	South Wall	West Wall	Wainscoting	Base	Decorative Trim(s)	Door(s)	Door & Window Moulding	Horizontal Plane	Vertical Plane	
First Floor Plan															
104	CONFERENCE ROOM	C1	--	P3	P2	P2	P2	NA	VCB1	P7	-	P7	-	-	
105	COMPOUNDING ROOM	SV1	NA	FRP1	FRP1	FRP1	FRP1	NA	SV1	P7	-	P7	PL5	NA	6" FLASH COVE BASE, HEAT WELD SEAMS; SMOOTH FINISH FRP
105A	GOWN ROOM	SV1	NA	FRP1	FRP1	FRP1	FRP1	NA	SV1	P7	-	P7	PL5	NA	6" FLASH COVE BASE, HEAT WELD SEAMS; SMOOTH FINISH FRP



AI INTERIOR ELEVATION & INTERIOR FINISH SCHEDULE

1/2" = 1'-0" COMPOUNDING LAB REVISION - COMPOUNDING LAB

APOTHECARY BY DESIGN
141 PREBLE ST, PORTLAND
COMPOUNDING LAB - RELOCATION / REVISION

DATE:	11.20.12
PROJECT #:	120111
DRAWN BY:	DMR
DRAWING SCALE:	AS NOTED

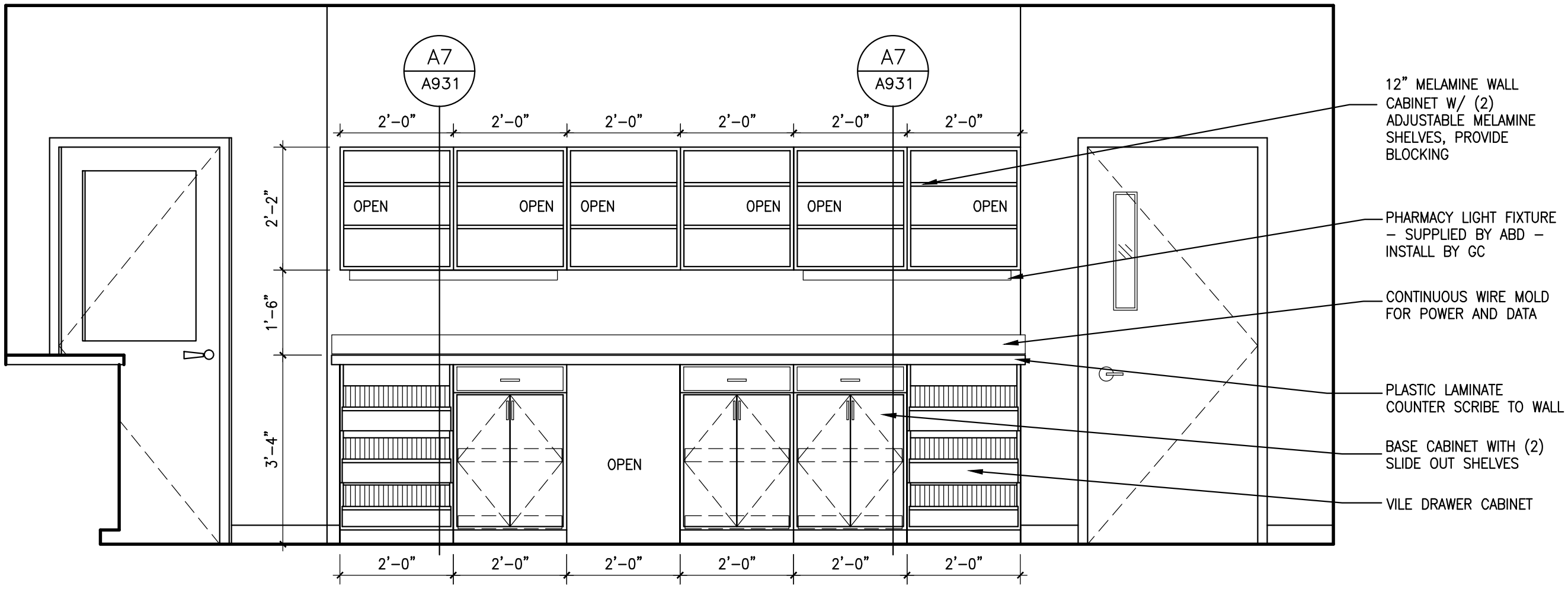
CSK - 9

Sheet 4 of 6
REVISED 11.20.12

© COPYRIGHT 1985-2008
REPRODUCTION OR REUSE OF THIS DOCUMENT WITHOUT
WRITTEN PERMISSION OF GAWRON TURGEON ARCHITECTS
IS PROHIBITED

**Gawron
Turgeon
ARCHITECTS**

29 Black Point Road
Scarborough, Maine 04074
www.gawronturgeon.com
207-883-6307 tel 207-883-0361 fax



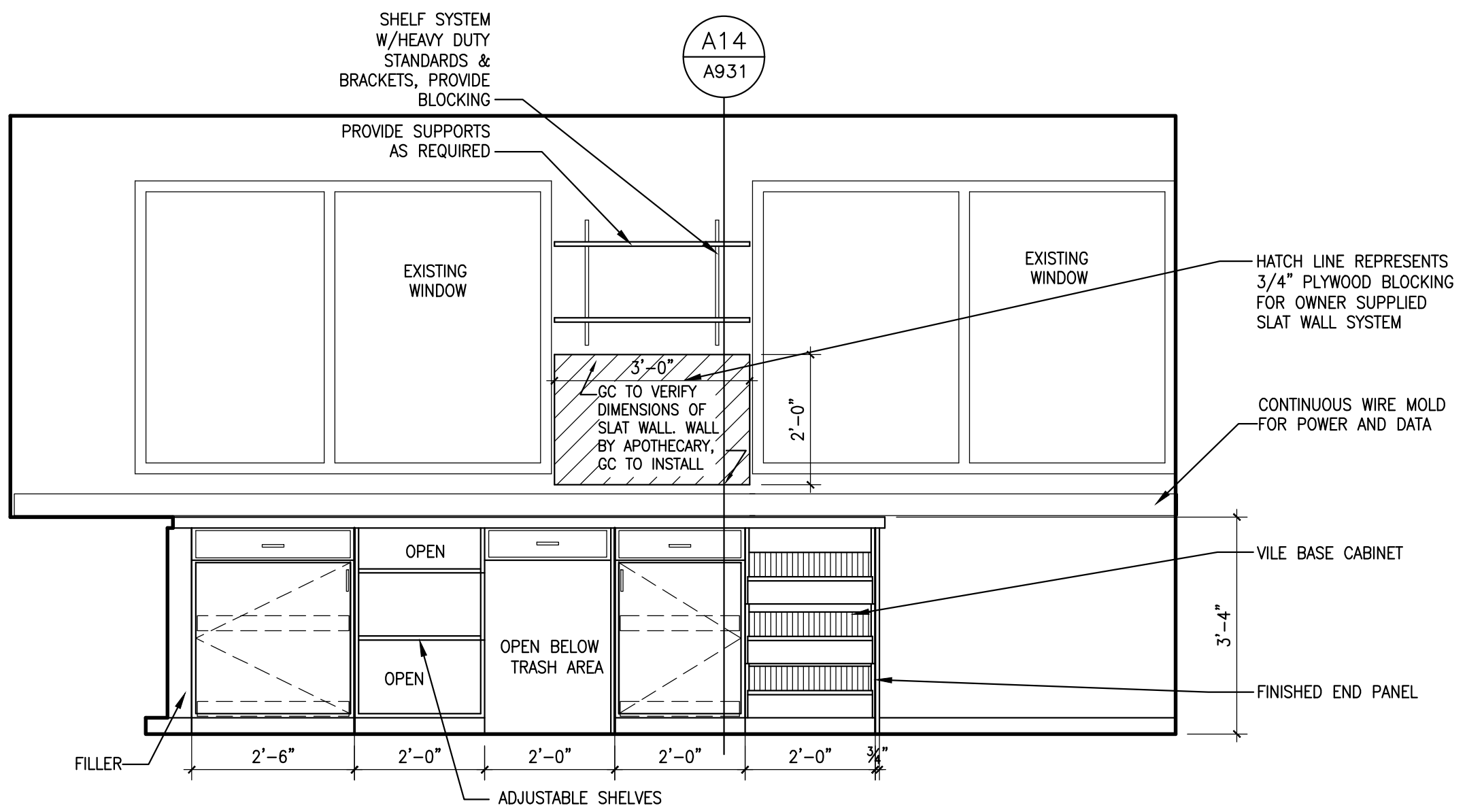
- 12" MELAMINE WALL CABINET W/ (2) ADJUSTABLE MELAMINE SHELVES, PROVIDE BLOCKING
- PHARMACY LIGHT FIXTURE - SUPPLIED BY ABD - INSTALL BY GC
- CONTINUOUS WIRE MOLD FOR POWER AND DATA
- PLASTIC LAMINATE COUNTER SCRIBE TO WALL
- BASE CABINET WITH (2) SLIDE OUT SHELVES
- VILE DRAWER CABINET

APOTHECARY BY DESIGN
141 PREBLE ST, PORTLAND
COMPOUNDING LAB - RELOCATION / REVISION

AI INTERIOR ELEVATION
1/2" = 1'-0"
COMPOUNDING LAB REVISION - ANTE ROOM

DATE:	11.20.12
PROJECT #:	120111
DRAWN BY:	DMR
DRAWING SCALE:	AS NOTED

CSK - 9
Sheet 5 of 6
REVISED 11.20.12
© COPYRIGHT 1985-2008
REPRODUCTION OR REUSE OF THIS DOCUMENT WITHOUT WRITTEN PERMISSION OF GAWRON TURGEON ARCHITECTS IS PROHIBITED



APOTHECARY BY DESIGN
141 PREBLE ST, PORTLAND
COMPOUNDING LAB - RELOCATION / REVISION

AI INTERIOR ELEVATION
1/2" = 1'-0"
COMPOUNDING LAB REVISION - ANTE ROOM

DATE:	11.20.12
PROJECT #:	120111
DRAWN BY:	DMR
DRAWING SCALE:	AS NOTED

CSK - 9
Sheet 6 of 6
REVISED 11.20.12
© COPYRIGHT 1985-2008
REPRODUCTION OR USE OF THIS DOCUMENT WITHOUT
WRITTEN PERMISSION OF GAWRON TURGEON ARCHITECTS
IS PROHIBITED