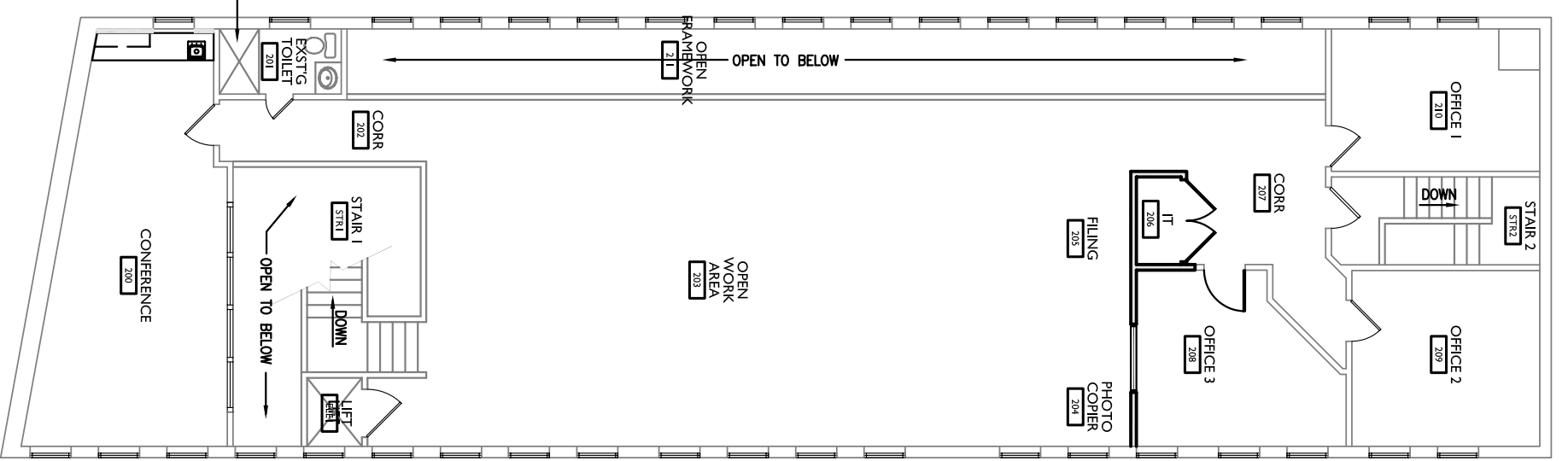
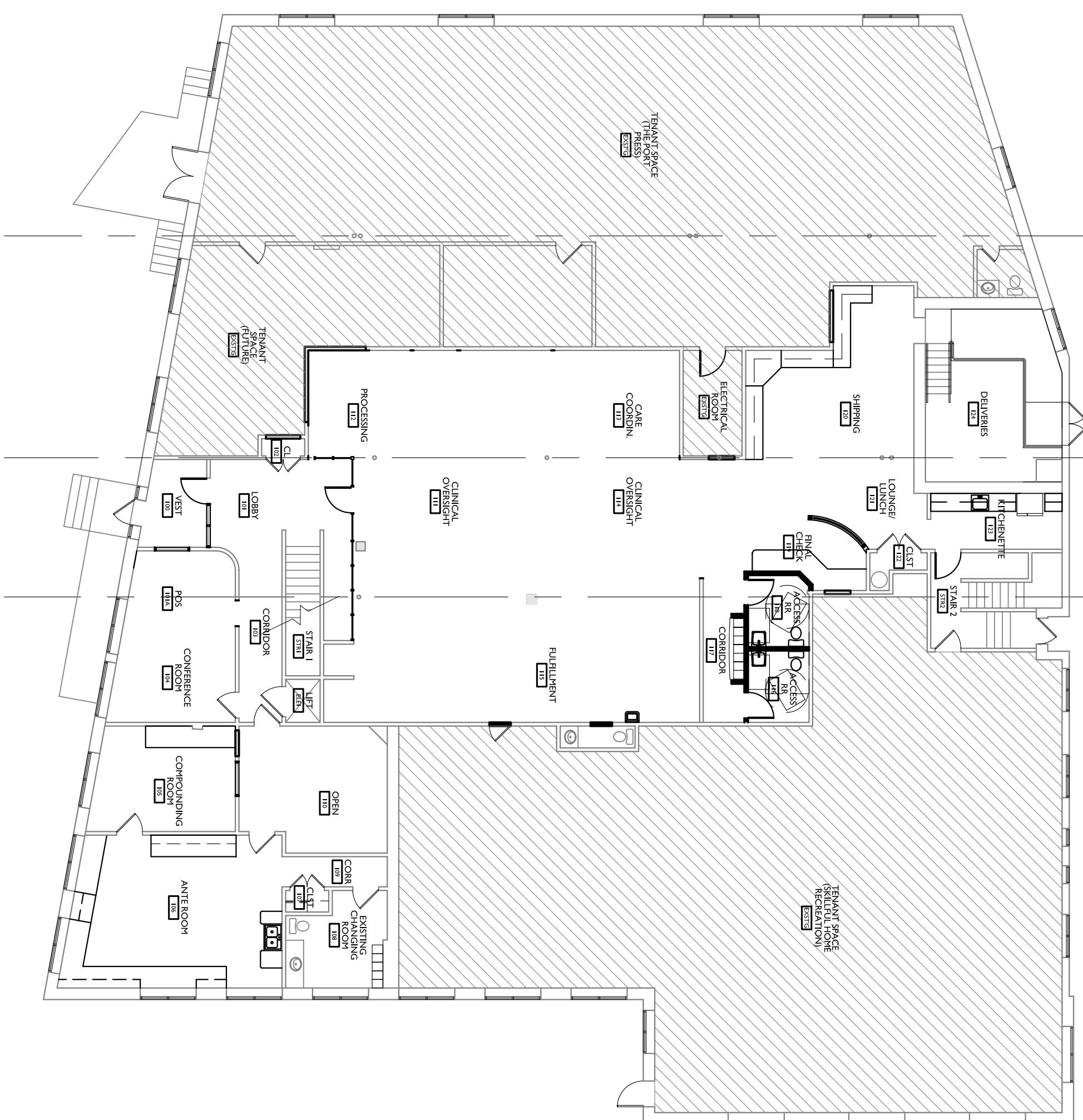


EXISTING AREAS NOT UNDER CONSTRUCTION
1 HOUR RATED ROOM ENCLOSURE



JI KEY PLAN - SECOND FLOOR



AI KEY PLAN - FIRST FLOOR

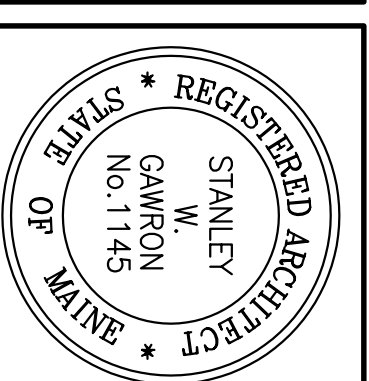
2009 NFPA: CODE DATA

TYPE OF CONSTRUCTION	CH. 37 MERCANTILE (EXISTING BUILDING)
OCCUPANT LOAD	TYPE V 000 FIRST FLOOR: 175 SECOND FLOOR: 49
MERCANTILE CLASS	B
EXTERIOR BEARING WALLS	0 HOUR
EXTERIOR NONBEARING WALLS	0 HOUR
INTERIOR BEARING WALLS	0 HOUR
COLUMNS	0 HOUR
BEAMS, GIRDERS, TRUSSES	0 HOUR
FLOOR CONSTRUCTION	0 HOUR
ROOF CONSTRUCTION	0 HOUR
MECHANICAL ROOMS	1 HOUR
TENANT SEPARATION	0 HOUR
APOTHECARY - FIRST FLOOR & SECOND FLOOR	8,132 S.F.
TOTAL BUILDING AREA	14,850 SF BUILDING TOTAL
BUILDING HEIGHT	20'-0" +/-
PROTECTION OF VERTICAL OPENINGS: 37.3.1	ALLOWED UNDER 37.3.1
FIRE SUPPRESSION	SPRINKLER SYSTEM - BUILDING OWNER TO INSTALL SUPERVISORY SYSTEM AS PART OF RENOVATION.
FIRE EXTINGUISHERS	PER NFPA 2009
UNIT SEPARATION: MUBEC CONFLICT ADOPTED RULE NUMBER: 2011.250	0 HOUR
COMMON PATH OF TRAVEL LIMIT	100'
DEAD-END LIMIT	50'
TRAVEL DISTANCE LIMIT	250'
EXITS: 8.6.6 COMMUNICATING SPACES: 37.2.1.2	2 MEANS OF EGRESS: 1 ENCLOSED STAIR & 1 COMMUNICATING SPACE
CORRIDOR WIDTH	44"
STAIR ENCLOSURES	1 HOUR
EXIT ACCESS CORRIDORS	0 HOUR
FLAME SPREAD RATINGS:	
INTERIOR FINISH REQUIREMENTS (SPRINKLERED BLDG)	CLASS A, B OR C
WALLS AND CEILINGS	CLASS A OR CLASS B
EXIT ACCESS CORRIDORS	CLASS A OR CLASS B
INTERIOR FLOOR FINISH REQUIREMENTS	CLASS I OR CLASS II (REDUCTION PERMITTED OF ONE CLASS IN SPRINKLERED BUILDING)
EXITS	
CORRIDORS	
GENERAL NOTES	1. ALL PENETRATIONS OF SMOKE BARRIERS, PARTITIONS, FIRE RATED WALLS AND FLOORS SHALL BE SEALED WITH PROPER APPROVED MATERIALS

2009 IBC: CODE DATA

OCCUPANT LOAD	M. Mercantile (EXISTING BLDG) FIRST FLOOR: 175 SECOND FLOOR: 49
USE GROUP CLASSIFICATION	MERCANTILE
TYPE OF CONSTRUCTION	TYPE V B
ACTUAL BUILDING AREA BY FLOOR	5,247 S.F. FIRST FLOOR - RENOVATED AREAS IS 2,885 S.F. SECOND FLOOR
TOTAL BUILDING AREA	14,850 SF
TABLE 503 BUILDING AREA LIMITATION - SQ. FT.	1 LEVEL @ 9,000 SF. AUTOMATIC SPRINKLER SYSTEM INCREASE BY 200 PERCENT
REQUIRED SEPARATION OF OCCUPANCIES (HOURS) TABLE 508.4	NO SEPARATION REQUIREMENTS
ACTUAL BUILDING HEIGHT	20'-0" +/-
EXIT ACCESS TRAVEL DISTANCE	250'-0"
DEAD END CORRIDORS	50'-0"
CORRIDOR WIDTH	44"
COMMON PATH OF EGRESS TRAVEL	75'
FIRE RATING:	
EXTERIOR BEARING WALLS	0 HOUR
INTERIOR BEARING WALLS	0 HOUR
NON-BEARING WALLS & PARTITIONS	0 HOUR
FLOOR CONSTRUCTION	0 HOUR
ROOF CONSTRUCTION	0 HOUR
CORRIDORS	0 HOUR
STAIR ENCLOSURES	1 HOUR
UNIT SEPARATION	0 HOUR
MECHANICAL ROOMS	1 HOUR
FLAME SPREAD RATINGS:	
INTERIOR WALL & CEILING FINISH REQUIREMENTS - TABLE 803.9	
EXIT ENCLOSURES & EXIT PASSAGEWAYS	B
CORRIDORS	C
ROOMS OR ENCLOSED SPACES	C
INTERIOR FLOOR FINISH REQUIREMENTS	CLASS II
EXIT ENCLOSURES & EXIT PASSAGEWAYS	CLASS II
CORRIDORS	CLASS II
PORTABLE FIRE EXTINGUISHERS SECTION 906	
GENERAL NOTES	1. ALL PENETRATIONS OF SMOKE BARRIERS, PARTITIONS, FIRE RATED WALLS AND FLOORS SHALL BE SEALED WITH PROPER APPROVED MATERIALS 2. ALL WORK SHALL CONFORM TO LOCAL AND STATE CODES, ORDINANCES, AND REQUIREMENTS, ACCESSIBILITY PER ADA, A.G.

A9 CODE REVIEW



Gawron Turgeon ARCHITECTS
29 Black Point Road
Scarborough, Maine 04074
www.gawronturgeon.com
2025-2026 License No. 20250000128

APOTHECARY BY DESIGN
141 PREBLE STREET
PORTLAND, MAINE

REVISIONS	
#	DATE DESCRIPTION
1	9.18.12 NFPA REVISIONS

DATE	07.05.12
PROJECT #	120111
DRAWN BY	DLP
CHECKED BY	MEI
DRAWING SCALE	AS NOTED
SHEET TITLE	
CODE REVIEW	

G102