

- NOTES:**
1. VENT ALL HIGH POINTS. DRAIN ALL LOW POINTS.
 2. PROVIDE ISOLATION VALVES & SCREWED UNIONS FOR ALL EQUIPMENT CONNECTIONS.
 3. THREE WAY CONTROL VALVE SHALL INCORPORATE AN ELECTRONIC ACTUATOR.
 4. ADJUST PRIMARY CHILLED WATER SUPPLY TO MAINTAIN 45°F.
- CONTROL SEQUENCE:**
- a. PIPE MOUNTED WATER TEMPERATURE SENSOR SHALL BE WIRED THROUGH A PROGRAMMABLE DIGITAL CONTROL MODULE TO THE 3-WAY CONTROL VALVE.
 - b. 3-WAY CONTROL (OVERTRIP) VALVE SHALL MODULATE TO MAINTAIN 70°F. ADJUSTABLE PROCESS CHILLED WATER SUPPLY TEMPERATURE. SEND ALARM SIGNAL IF TEMPERATURE DROPS BELOW 70°F.
 - c. PROVIDE ANALOG OUTPUT TO EXISTING FACILITY AUTOMATION SYSTEM FOR MONITORING PROCESS CHILLED WATER SUPPLY AND RETURN TEMPERATURES.

- KEYED NOTES:**
- 1 REPLACE (E)1/2" PEX TUBING W/1" PEX.
 - 2 (E)1/2" PEX TUBING TO REMAIN

FAN SCHEDULE

TAG	SERVICES	MANUFACTURER/MODEL	TYPE	DRIVE	CFM (IN. W.C.)	SP. BHP	MAX HP	MOTOR HP	MAX RPM	VOLTS/PH	MAX SONES	MOTOR SPEED (LBS.)	WEIGHT (LBS.)	DAMPER	NOTES
EF-9	PRODUCTION LINE - B EXHAUST	COOK - 120 AGRUB	UPRAST CENTRIFUGAL ROOF	BELT	1,250	0.75	0.27	1/4	1570	208/90/1	15.2	SINGLE	92	MOD	1,2
EF-10	PRODUCTION LINE - A EXHAUST	COOK - 120 AGRUB	UPRAST CENTRIFUGAL ROOF	BELT	1,250	0.75	0.27	1/4	1570	208/90/1	15.2	SINGLE	92	MOD	1,2
EF-18	PRODUCTION LINE - B EXHAUST	KAWAFLAKT - KD20	CENTRIFUGAL INLINE	DIRECT	2,715	2.25	2.97	3	1725	480/90/3	29.0	VFD	95	BDD	1
SF-1	PRODUCTION LINE - A SUPPLY	KAWAFLAKT - KD12XL	CENTRIFUGAL INLINE	DIRECT	900	5"	-	3/8W	1480	208/90/1	13.4	VFD	45	MOD	1
SF-2	PRODUCTION LINE - B SUPPLY	KAWAFLAKT - KD12XL	CENTRIFUGAL INLINE	DIRECT	900	5"	-	3/8W	1480	208/90/1	13.4	VFD	45	MOD	1

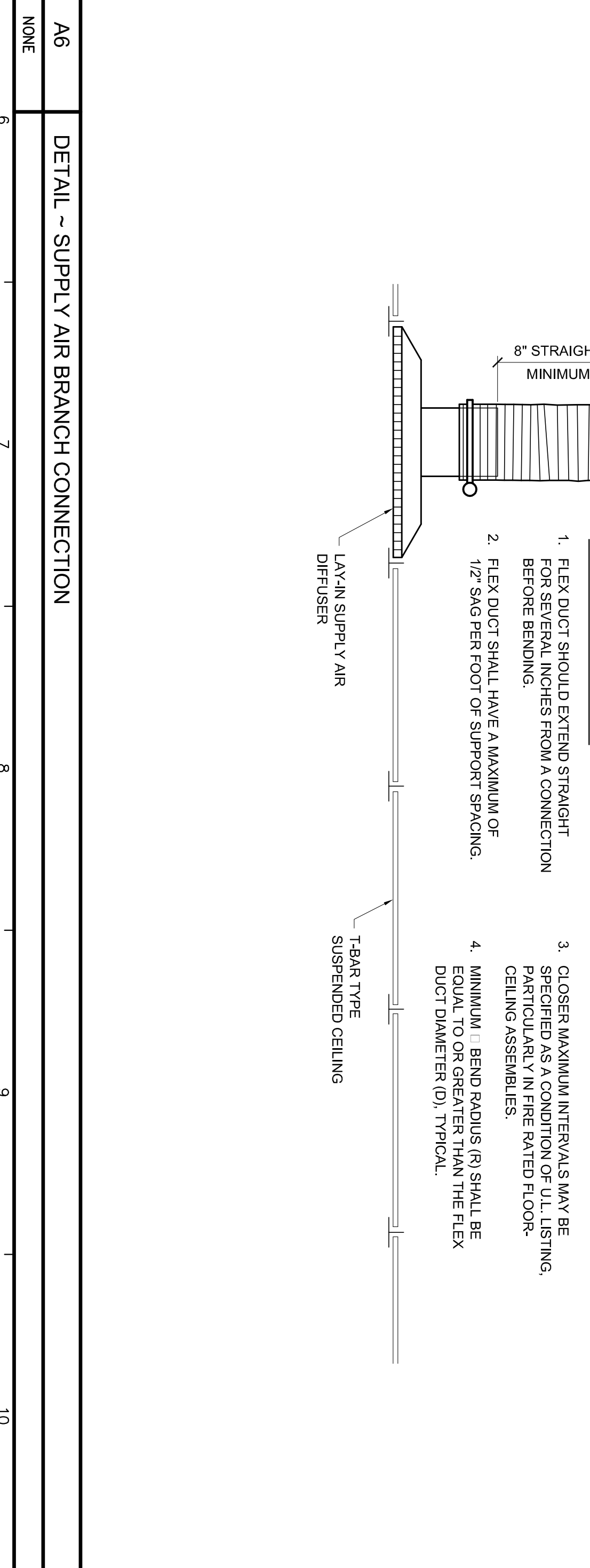
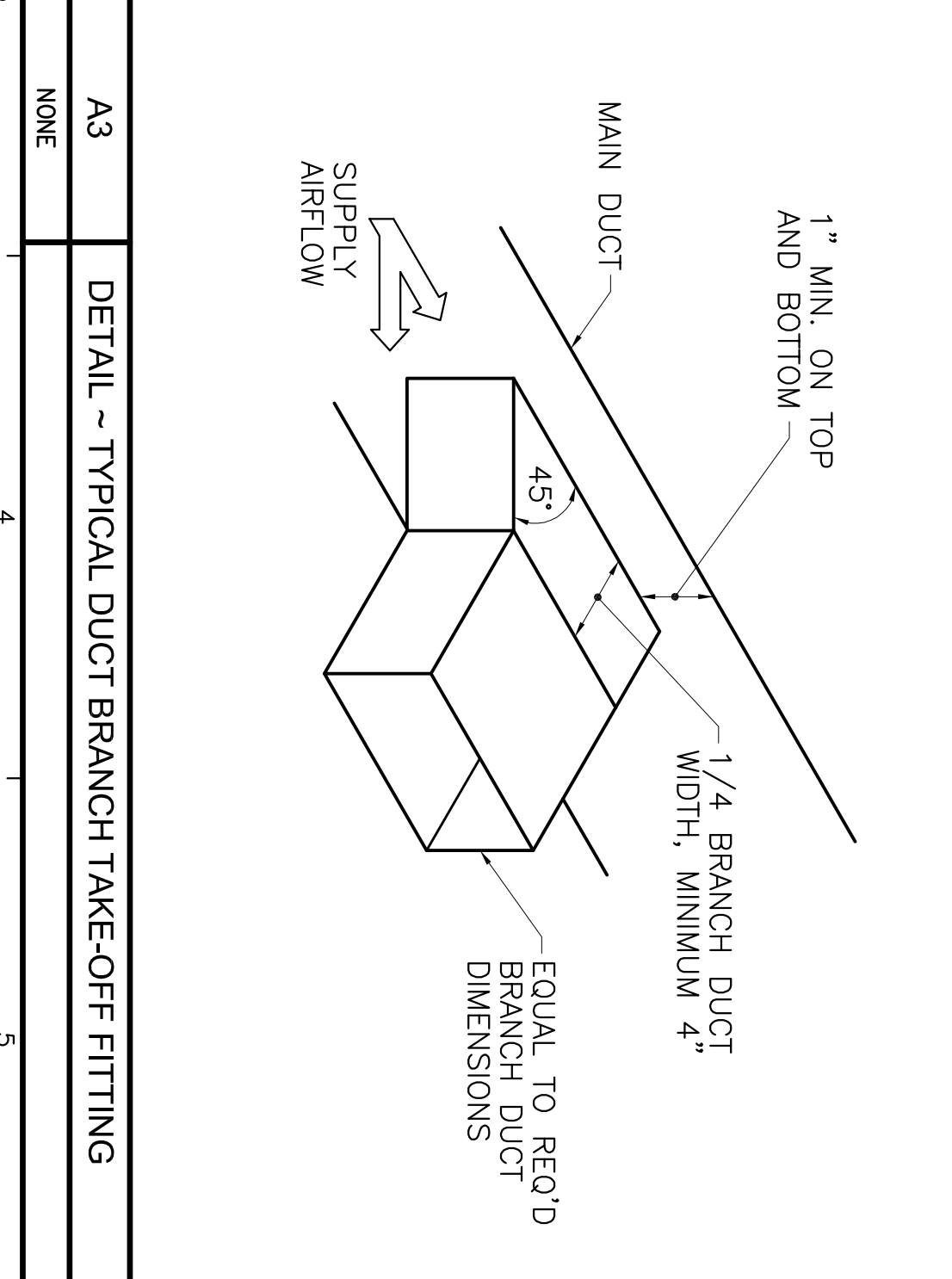
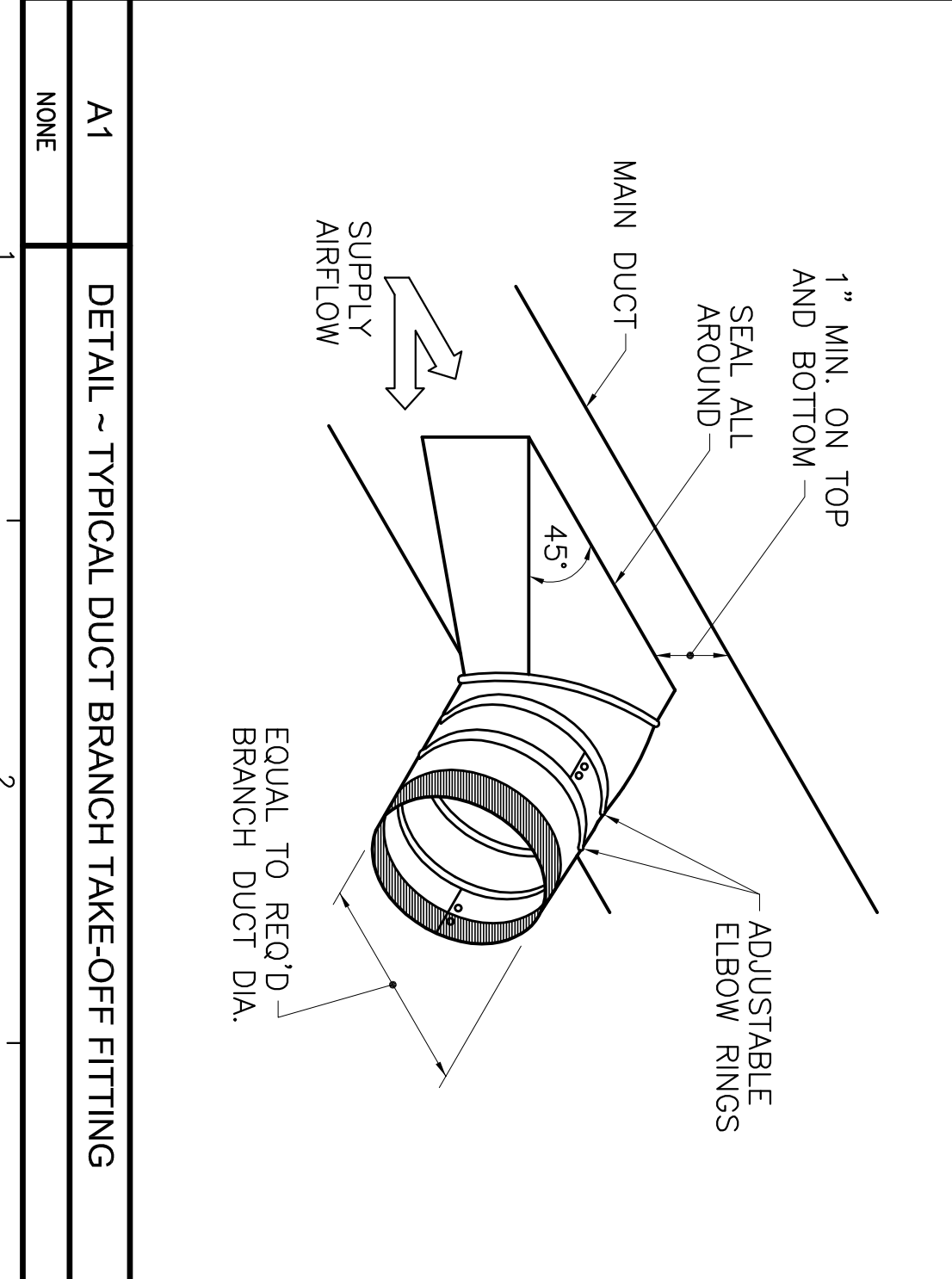
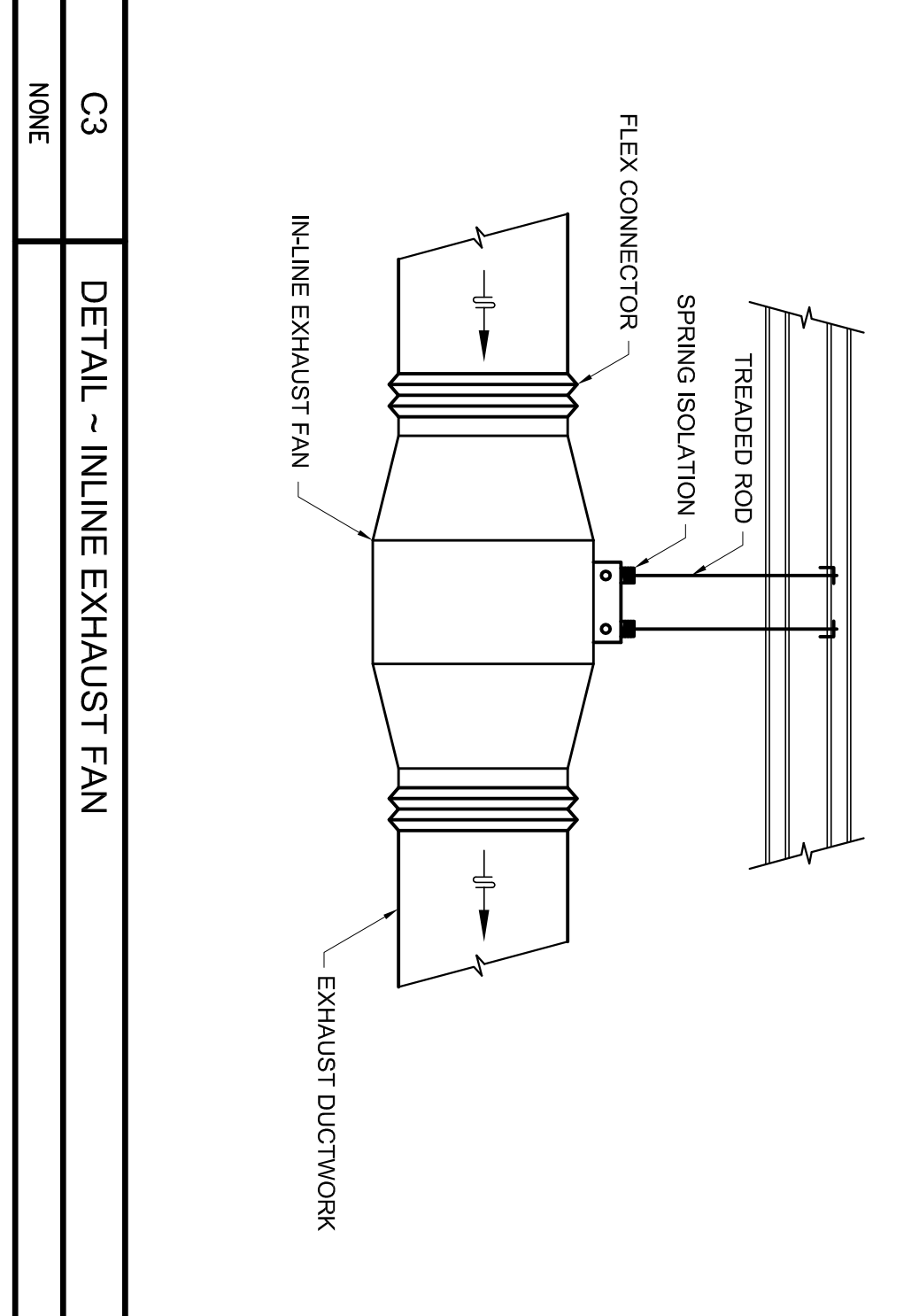
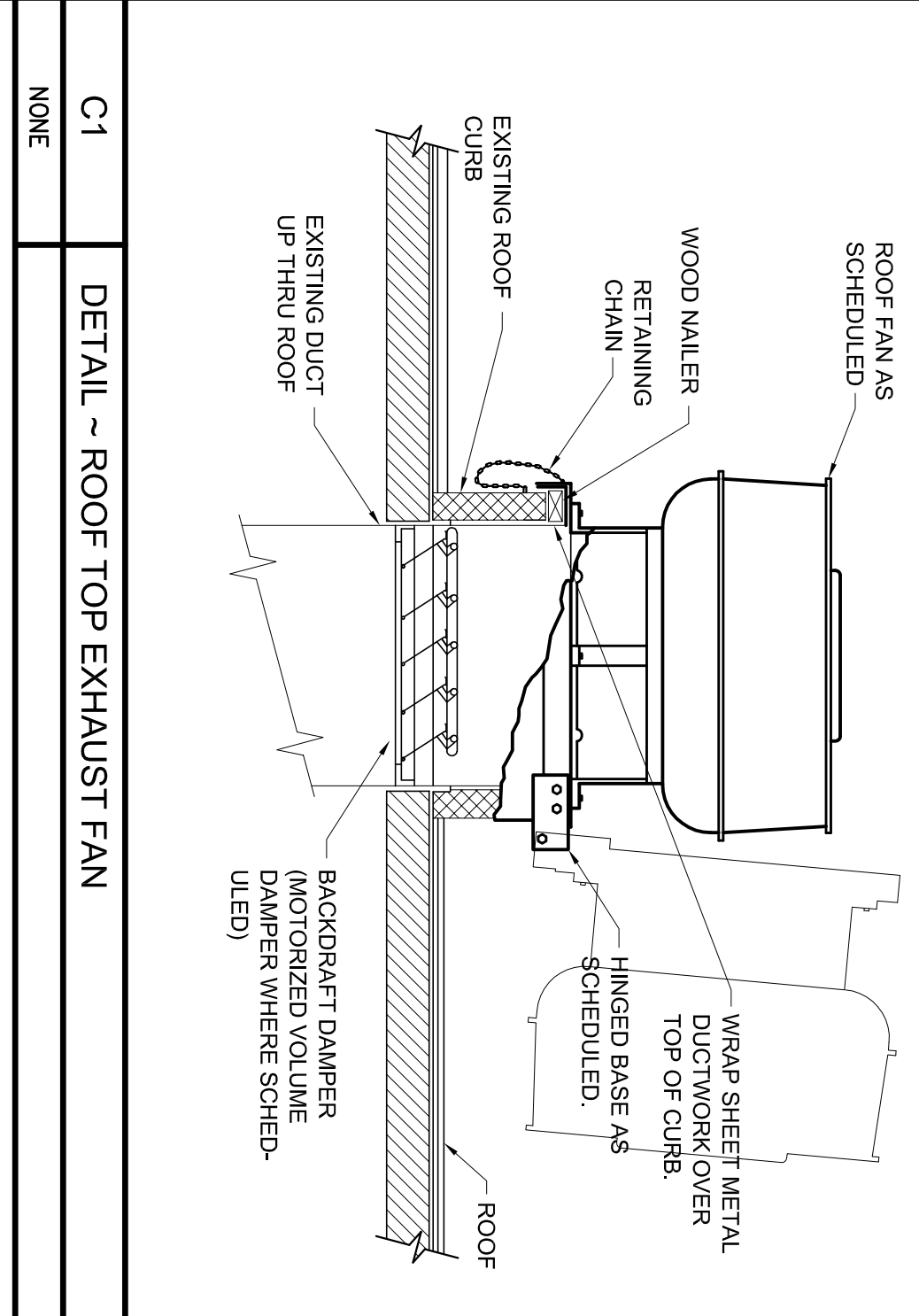
NOTES:

1. PROVIDE DISCONNECTS.
2. PROVIDE ROOF CURB.

REGISTERS - GRILLES - DIFFUSERS (RGD) SCHEDULE

TAG	PRICE	MODEL	TYPE	NECK SIZE	FACE SIZE	GRILL RANGE (IN. W.C.)	MAX. TOTAL P.D. LEVEL (IN. W.C.)	MAX. NO. OF LEVELS	BORER TYPE	BLOW	NOTES
S-1	SCD		SO. CEILING SUPPLY DIFFUSER	12" DIA.	24" X 24"	441-630	0.07"	24	LAY-IN	4WAY	
R-1	510Z		STEEL RETURN GRILLE: 3/4" SPACING, 0 DEG VANES	12" X 10"	12" X 10"	0-800	0.040"	35	SURFACE		
R-2	510Z		STEEL RETURN GRILLE: 3/4" SPACING, 0 DEG VANES	18" X 12"	18" X 12"	900-1300	0.040"	36	SURFACE		

NOTE 1: BLOW DIRECTION AS SHOWN ON THE PLANS. 1-WAY, 2-WAY, 3-WAY, OR 4-WAY



REVISIONS

NUMBER	DATE	BY	DESCRIPTION

MECHANICAL SCHEDULES AND DETAILS

Date: 10/27/2006
 Drawn By: SCL
 Checked By: ASD
 Project Mgr: ASD
 Project No: 06069
 Cad File: 06069M.DWG
 Graphic Scale: 0 1"

MH-500

RYNEL MANUFACTURING PLANT

WISCASSET, ME

© COPYRIGHT 2006 ALLIED ENGINEERING, INC.

Allied Engineering
 Structural Mechanical Electrical Commissioning

160 Veranda Street
 Portland, Maine 04103
 T: 207.221.2260
 F: 207.221.2266
 Web: www.allied-eng.com