



# Marginal Way Street Concept Design Study

July 11, 2006

Portland Planning  
Board Meeting



# **Project Objectives:**

## **Explore Options for Marginal Way Street Design**

- **High Quality Pedestrian Environment**
- **Provide Good Traffic Access & Circulation**
- **High Quality Bicycle Facilities**
- **Meet Bayside Plan Principles**

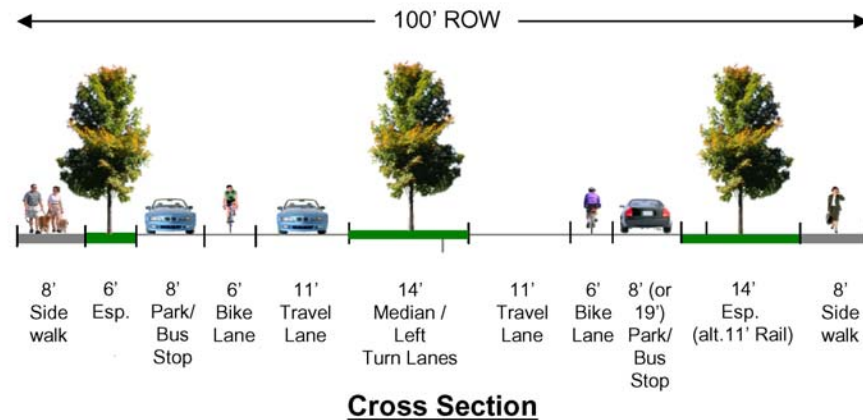
## **Illustrate Preferred Concept**

- **Cross-section diagram**
- **Plan Concept**
- **Preble Street - Marginal Way Intersection**

# Preferred Concept: Two Lane / Median

DRAFT

- Two 11' Traffic Lanes
- Fourteen foot median
  - Left turn bays
- Six foot bicycle lanes
- Eight Foot Sidewalks (min)
- Treed Esplanade (varies)
- On-Street Parking / Bus Stops-Pullouts
- Allows for future rail
- Improved pedestrian crossings



- Illustrates 3 Options:
- Parallel Parking
  - Diagonal Parking
  - Rail Corridor

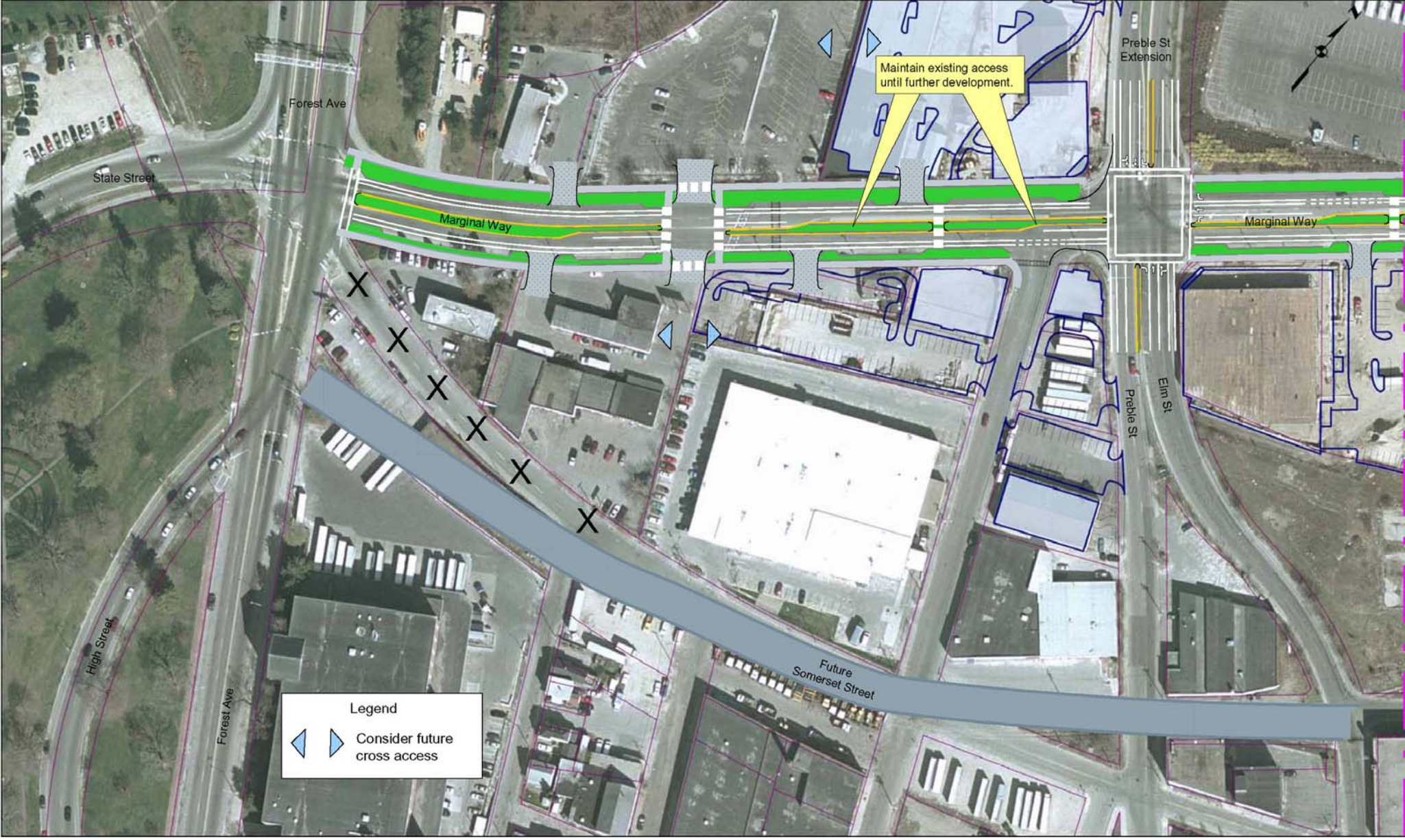


**Plan**



# Marginal Way: Forest Avenue to Wild Oats

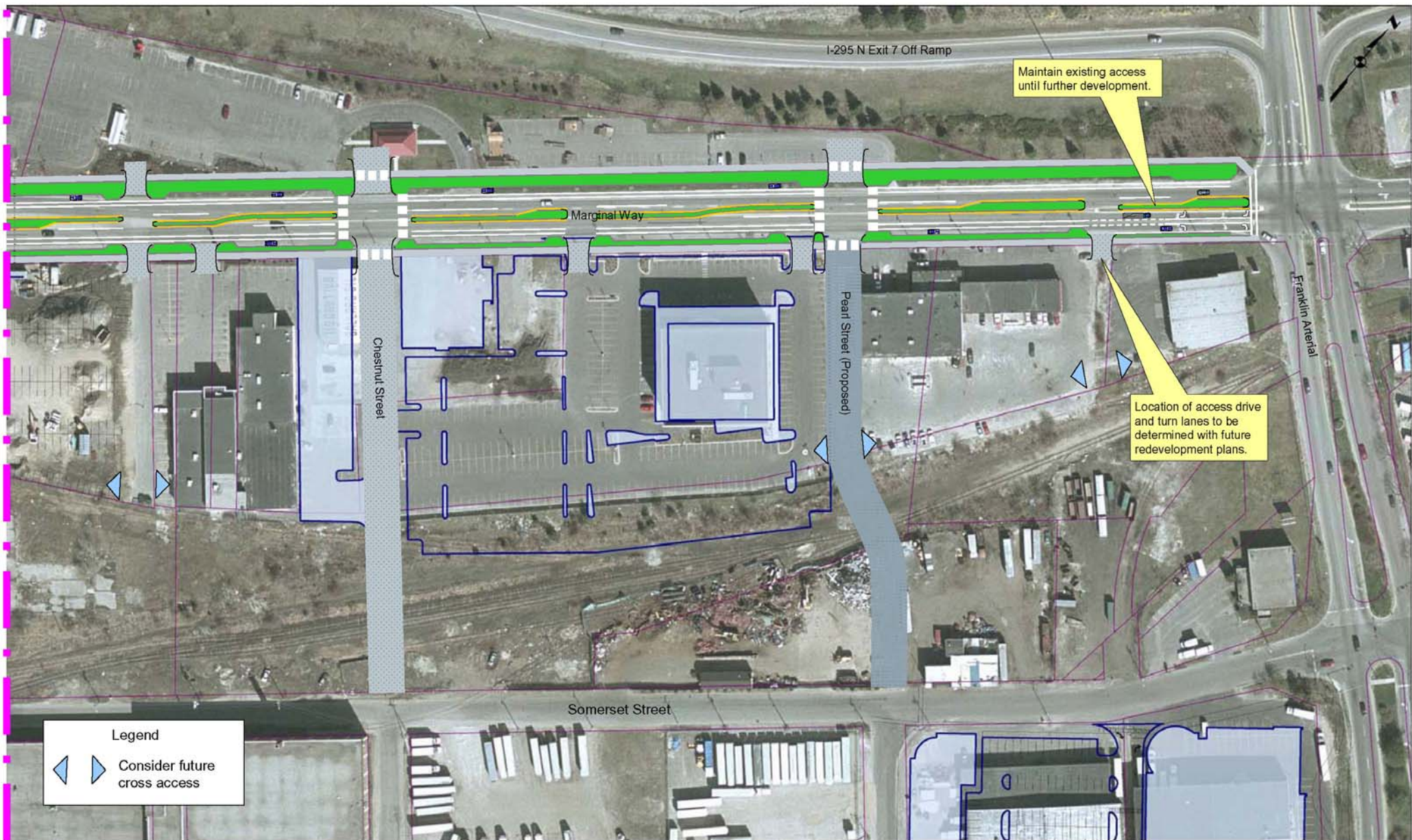
Revised





# Marginal Way: Whole Grocer to Franklin Street Arterial

Revised





# Marginal Way at Preble Street Intersection

Revised

- Reduced Pedestrian Crossing Distances
- Continuous Bicycle Lanes
- Improved Aesthetics
- Some Increased Traffic Delays

