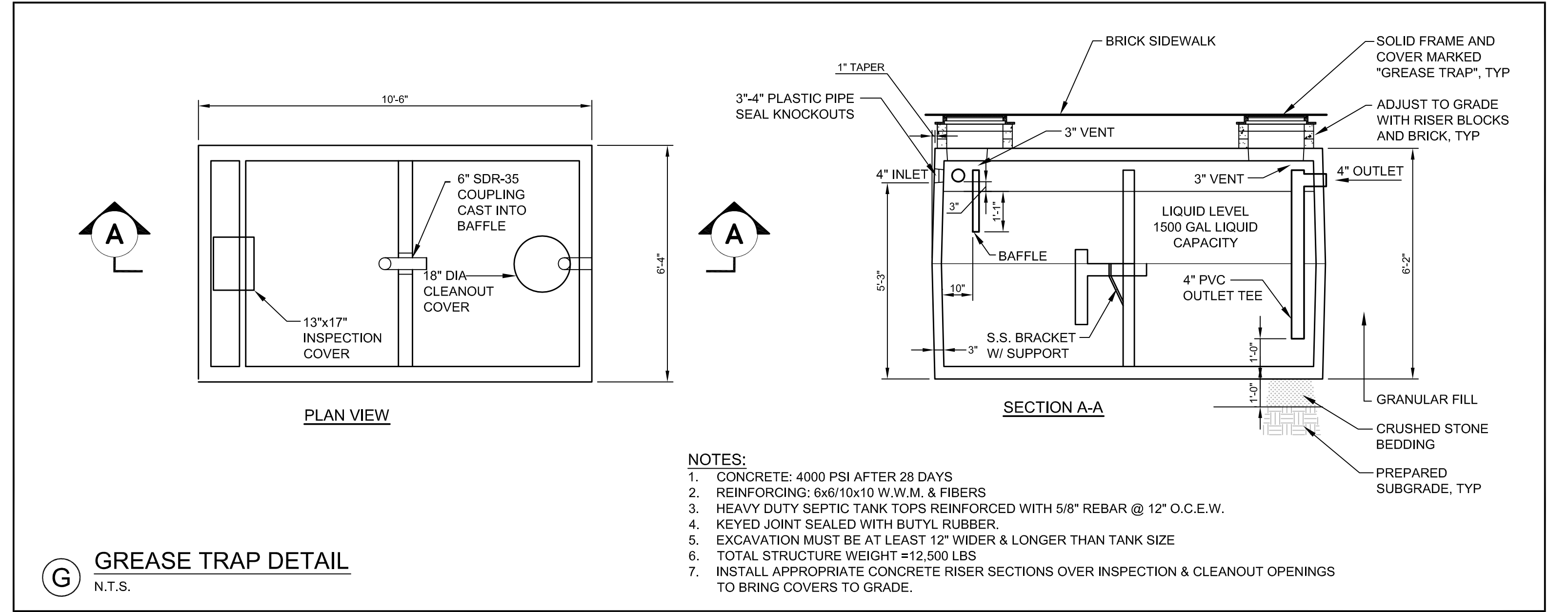
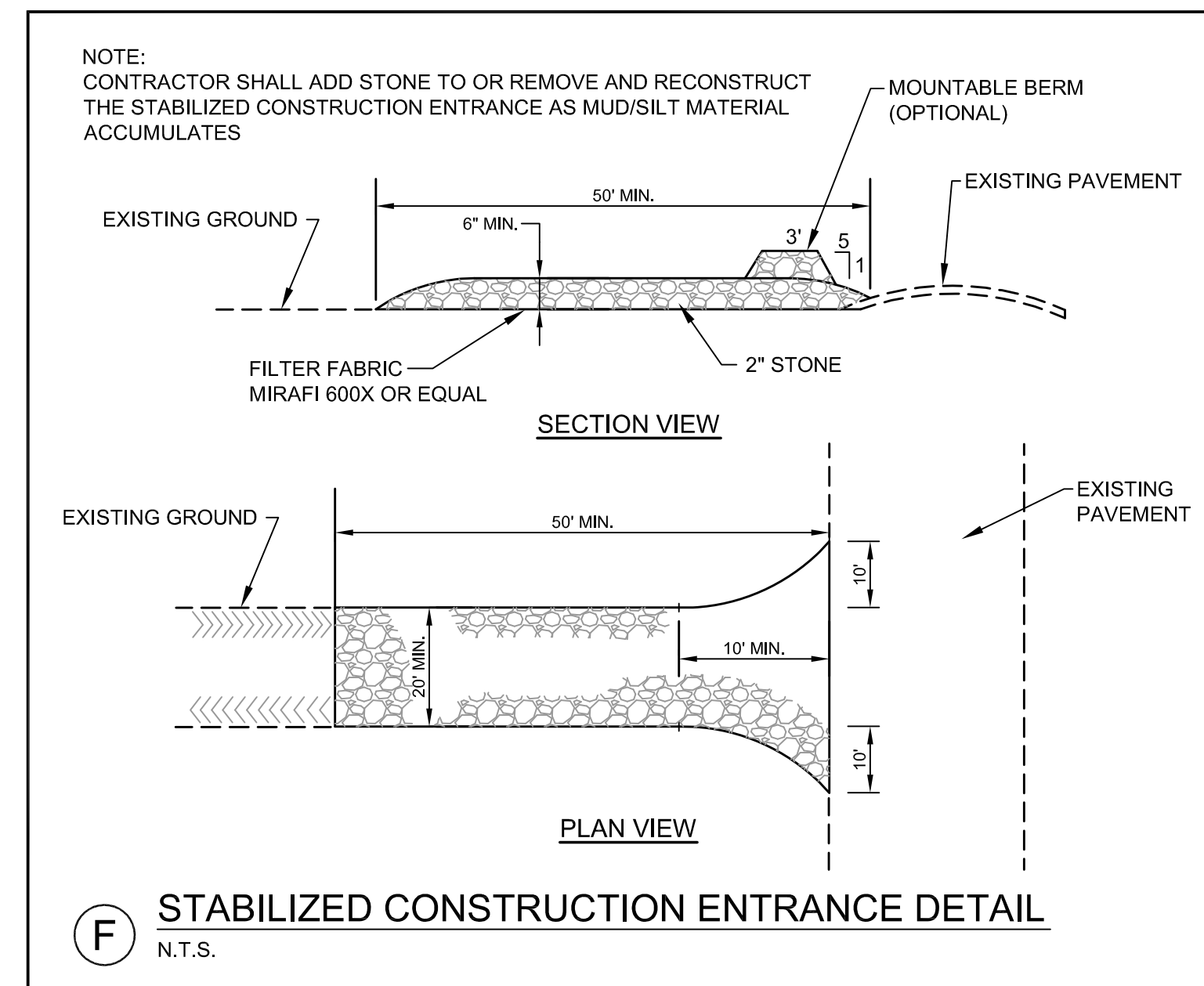
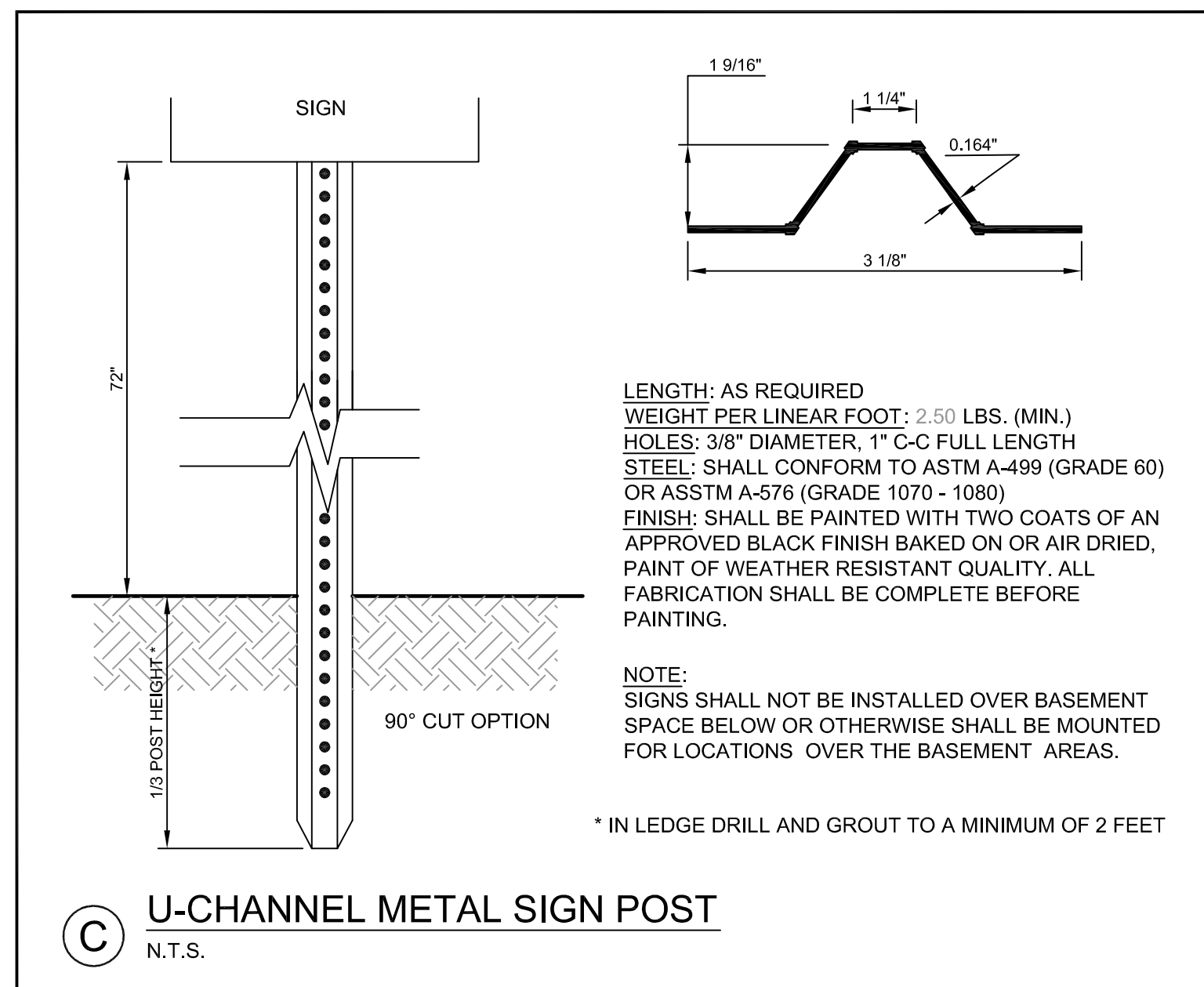
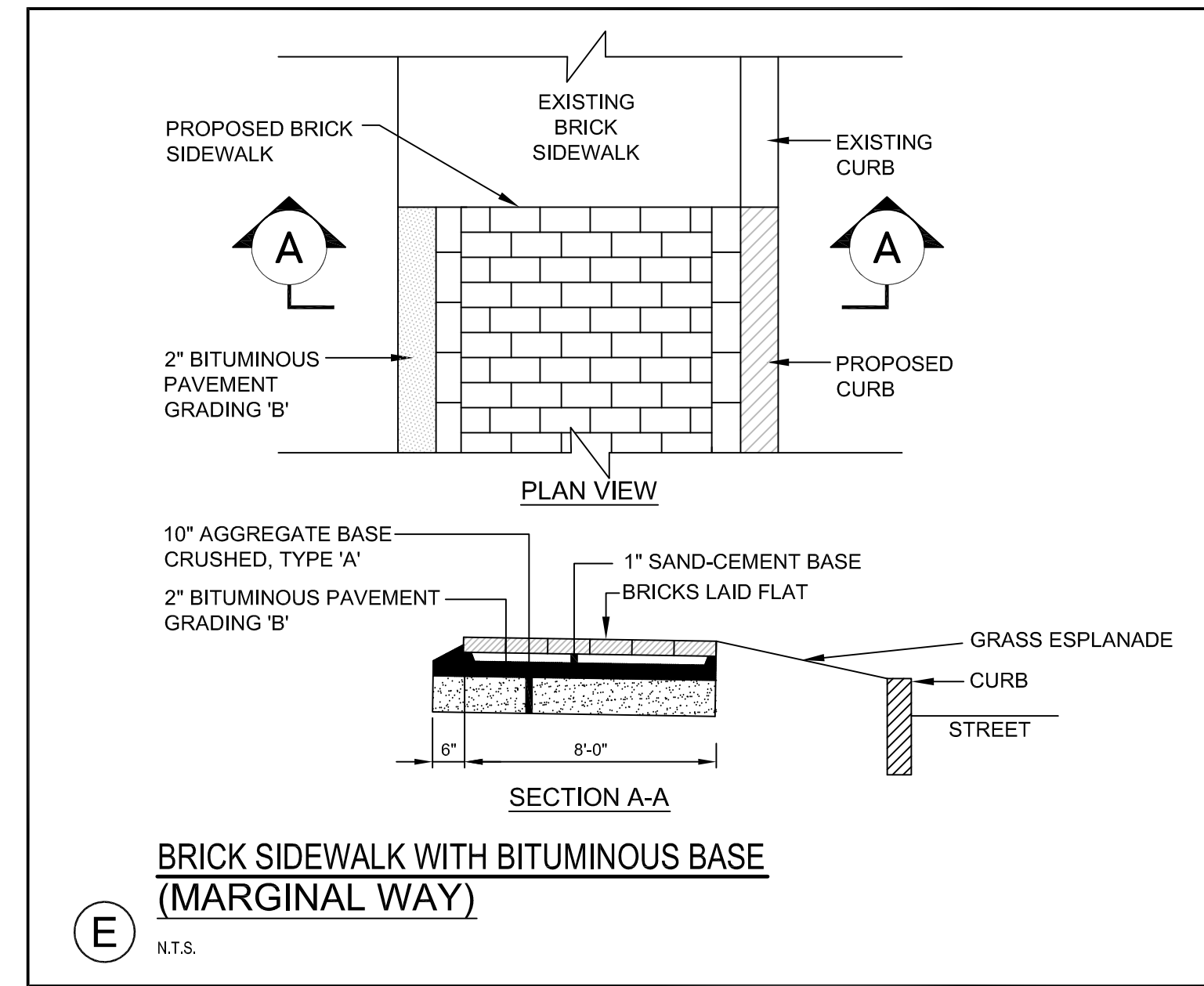
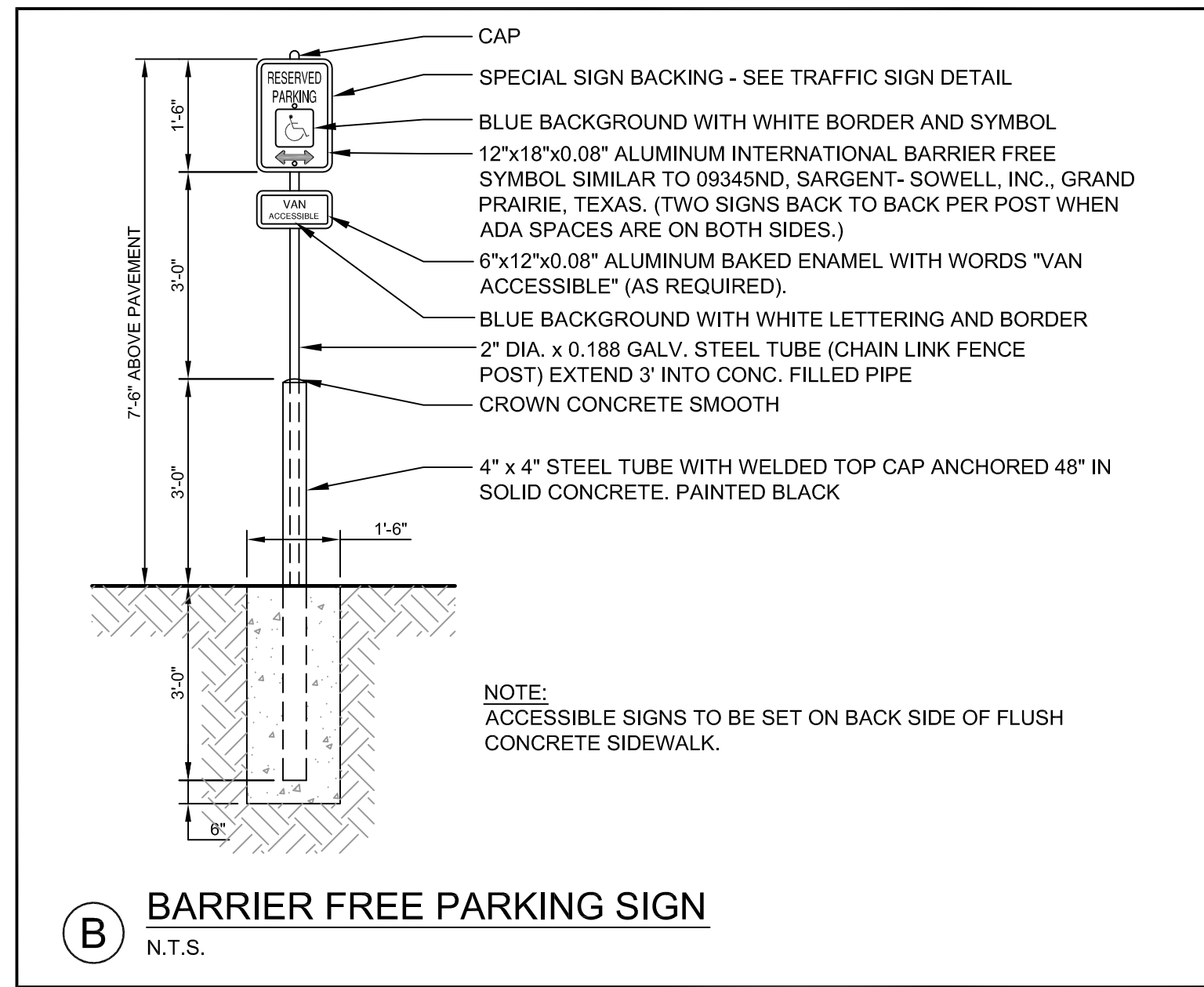
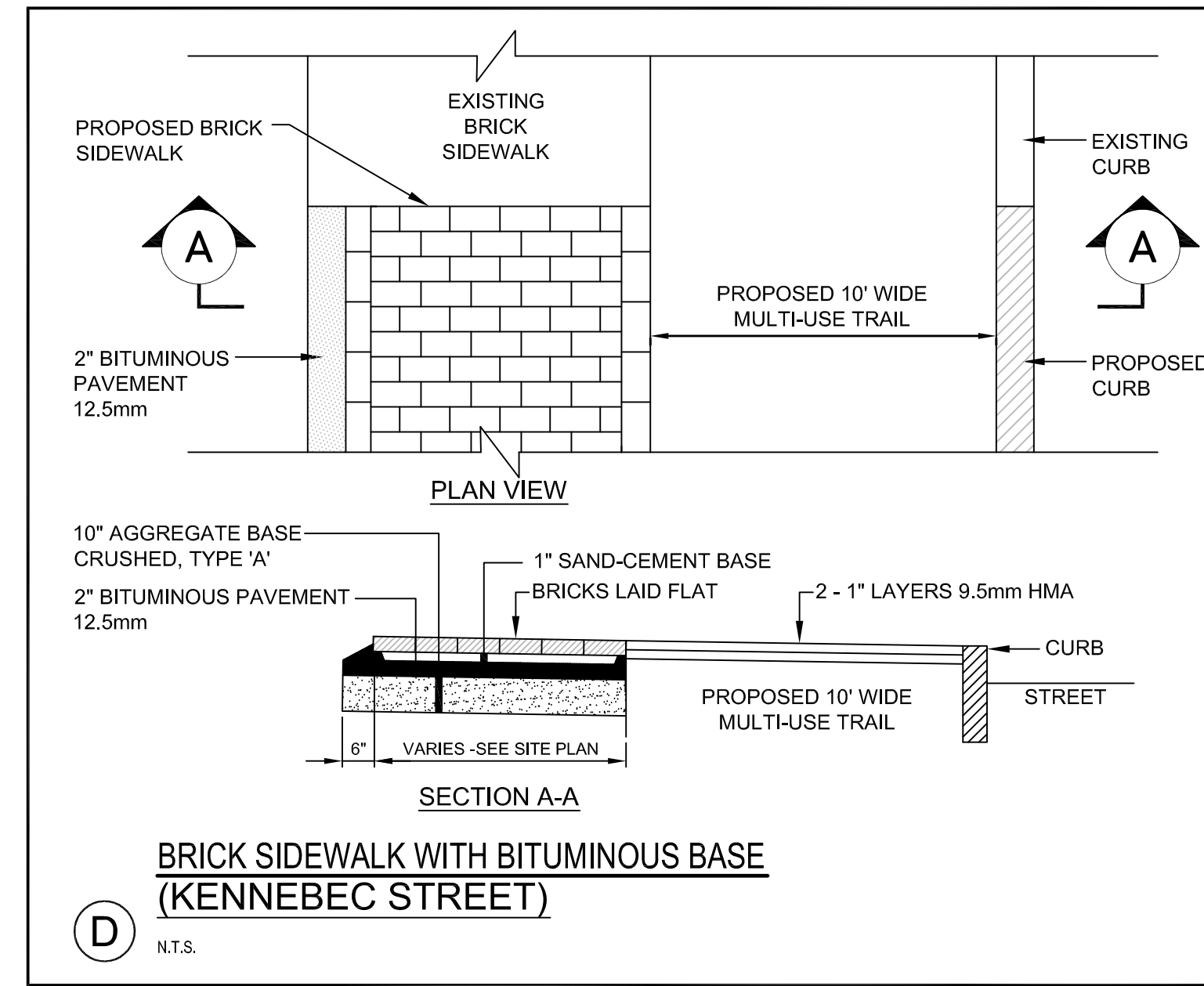
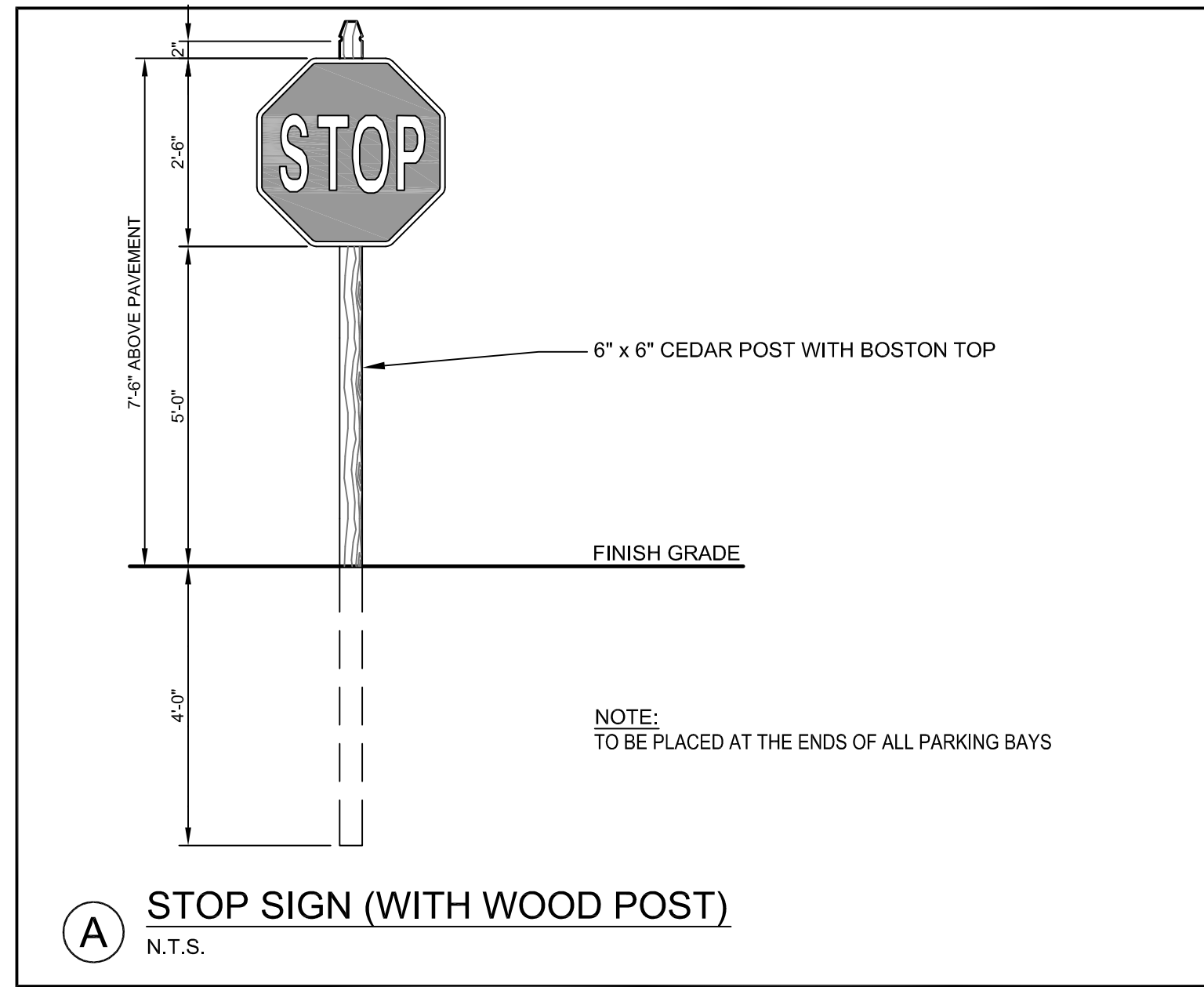


PRELIMINARY - NOT FOR CONSTRUCTION



### DOWNTOWN RACK Submittal Sheet

**CAPACITY:** 2 Bikes

**MATERIALS:** 2" x 2" x 3/8" square tube - mild steel; 2" x 2" x 1/4" square tube - stainless steel

**FINISHES:**

- Galvanized:** An after fabrication hot dip galvanized finish is our standard option. 350° F zinc powder coat colors, thermoplastic coating, PVC slip, and stainless steel finishes are also available as alternate options.
- Powder Coat:** Our powder coat finish ensures a high level of adhesion and durability by following these steps:
  - Sandblast
  - Epoxy primer electrostatically applied
  - Final thick TGIC polyester powder coat
- Thermoplastic:** In addition to an increased thickness (8-10 mils), the thermoplastic finish offers superior impact resistance over powder coating.
- Stainless:** Stainless Steel: 304 grade stainless steel material finished in either a high polished satin or a satin finish.

**MOUNT OPTIONS:**

- In-ground:** In-ground mount is embedded into concrete base. Specify in-ground mount for this option.
- Surface:** Foot Mount has two 2.0"x2.0"x2.0" feet with two anchors per foot. Specify foot mount for this option.
- Rail:** Rail Mounted Downtown Racks are loaded to two parallel rails which can be left freestanding or anchored to the ground. Rails are heavy duty 3"x4"x3/8" slot galvanized mounting rails. Specify rail mount for this option.

**SETBACKS:** (Diagram showing setbacks for a rack)

**DOWNTOWN RACK - SPECIFICATIONS AND SPACE USE**  
N.T.S.

		PROJECT: CENTURY TIRE PLAZA 195 KENNEBEC STREET, PORTLAND, ME SHEET TITLE: DETAILS CLIENT: NORTHLAND ENTERPRISES, LLC	FAY, SPOFFORD & THORNDIKE ENGINEERS · PLANNERS · SCIENTISTS 778 MAIN ST, SUITE 8, SOUTH PORTLAND, ME 04106
3 04.10.15 REVISED PER CITY COMMENTS 2 04.01.15 REVISED PER CITY COMMENTS 1 02.13.15 ISSUED FOR CITY PERMIT	REVISIONS	DRAWN: KCS DATE: 11.25.14 DESIGNED: ADJ SCALE: NTS CHECKED: ADJ JOB NO. SP-M160 FILE NAME: SP-M160 DETAILS SHEET C-7.2	P.E. ANDREW D. JOHNSTON LIC. #9994