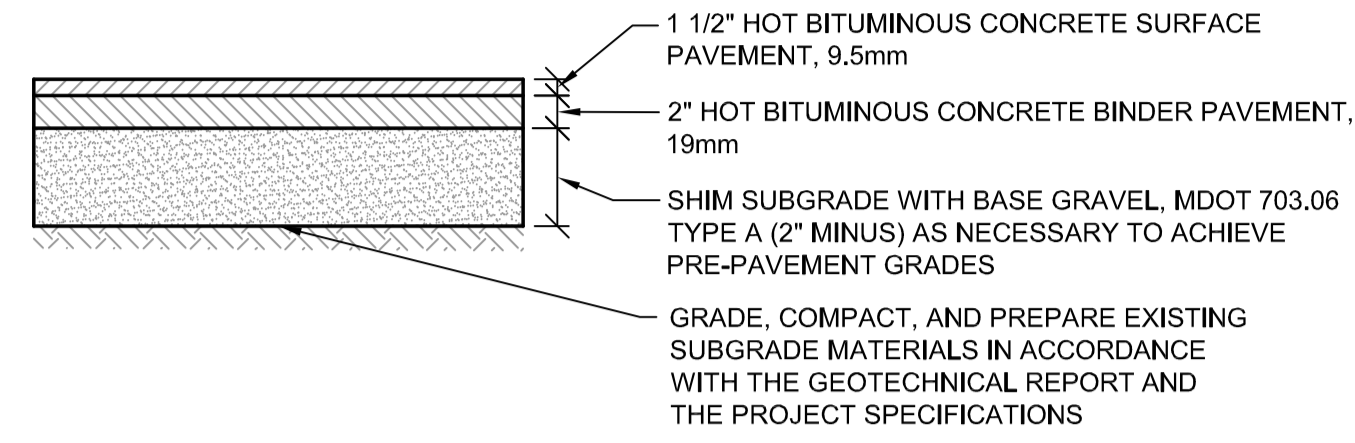


PRELIMINARY - NOT FOR CONSTRUCTION

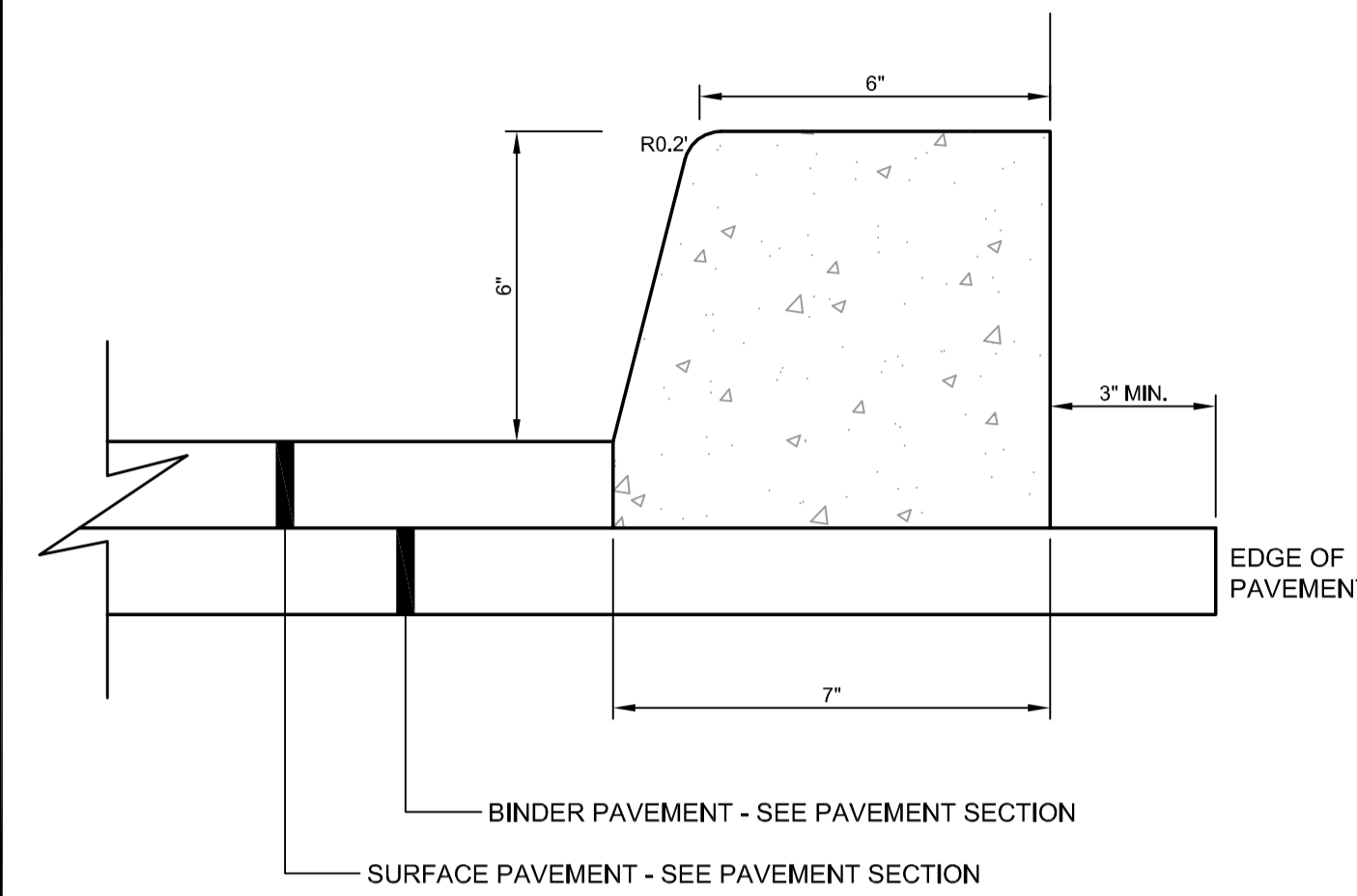


NOTES:

1. APPLY TACK COAT BETWEEN BINDER AND SURFACE COURSES.
2. ALL MATERIALS SHALL CONFORM TO MDOT SPECIFICATIONS, LATEST REVISION.
3. COMPACTION OF ALL MATERIALS TO BE IN ACCORDANCE WITH THE SPECIFICATIONS AND THE GEOTECHNICAL REPORT.

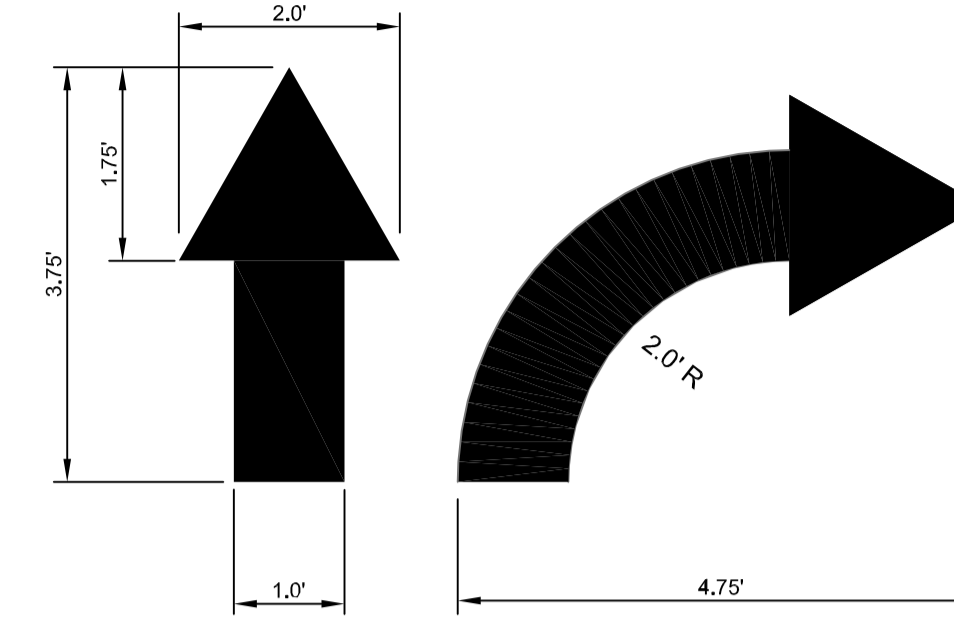
BITUMINOUS CONCRETE PAVEMENT SECTION OVER EXISTING BASE MATERIAL

(A) N.T.S.



EXTRUDED SLIPFORM VERTICAL CONCRETE CURB DETAIL

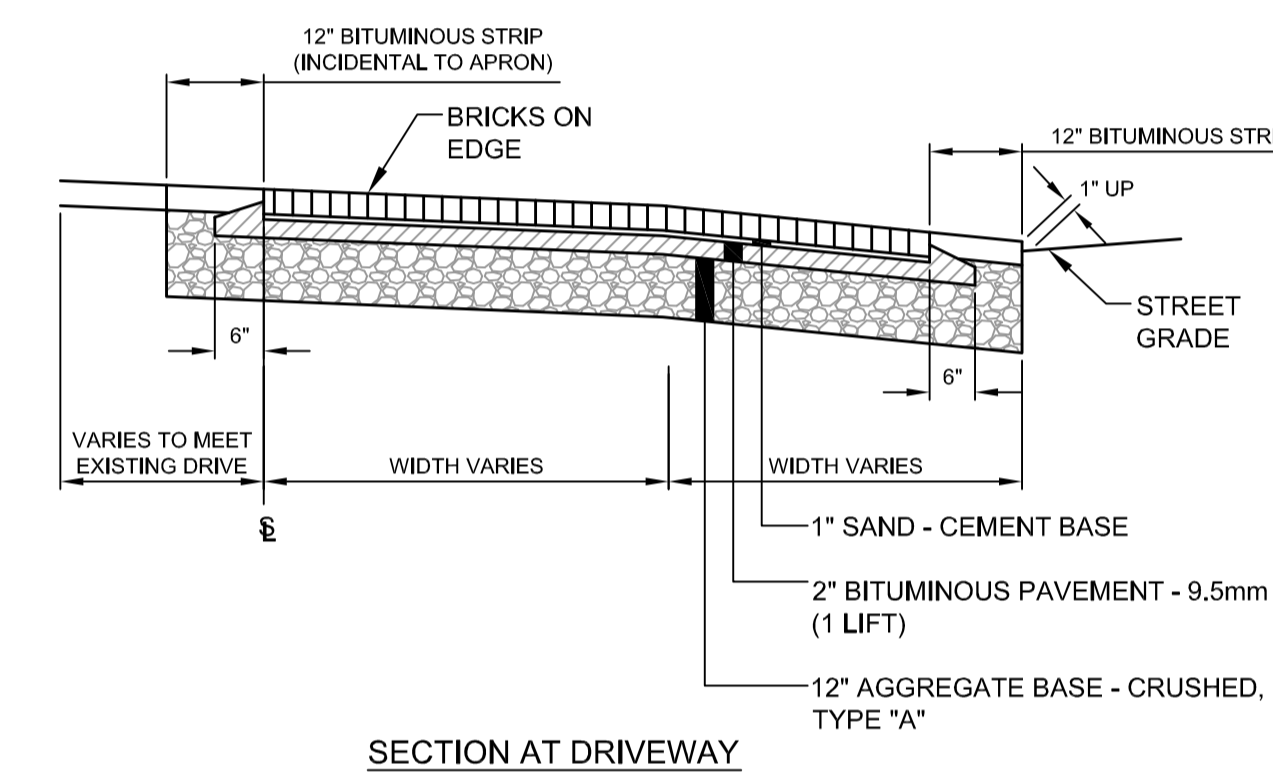
(D) N.T.S.



TRAFFIC FLOW ARROW DETAIL

(G) N.T.S.

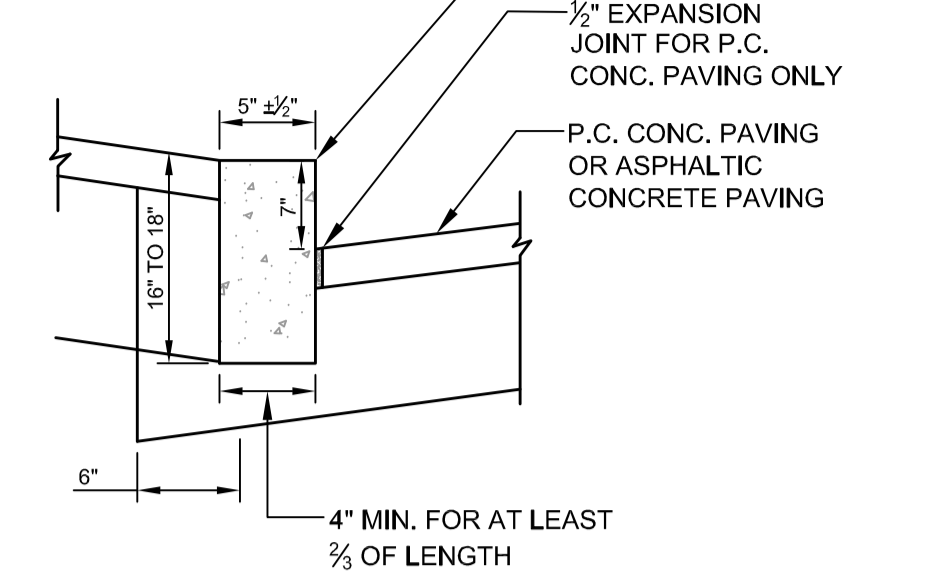
NOTE: BORDER COURSE OF BRICK SHALL BE MORTARED TO CONCRETE BASE



CITY OF PORTLAND BRICK WITH BITUMINOUS BASE SIDEWALK AND DRIVEWAY CONSTRUCTION DETAIL

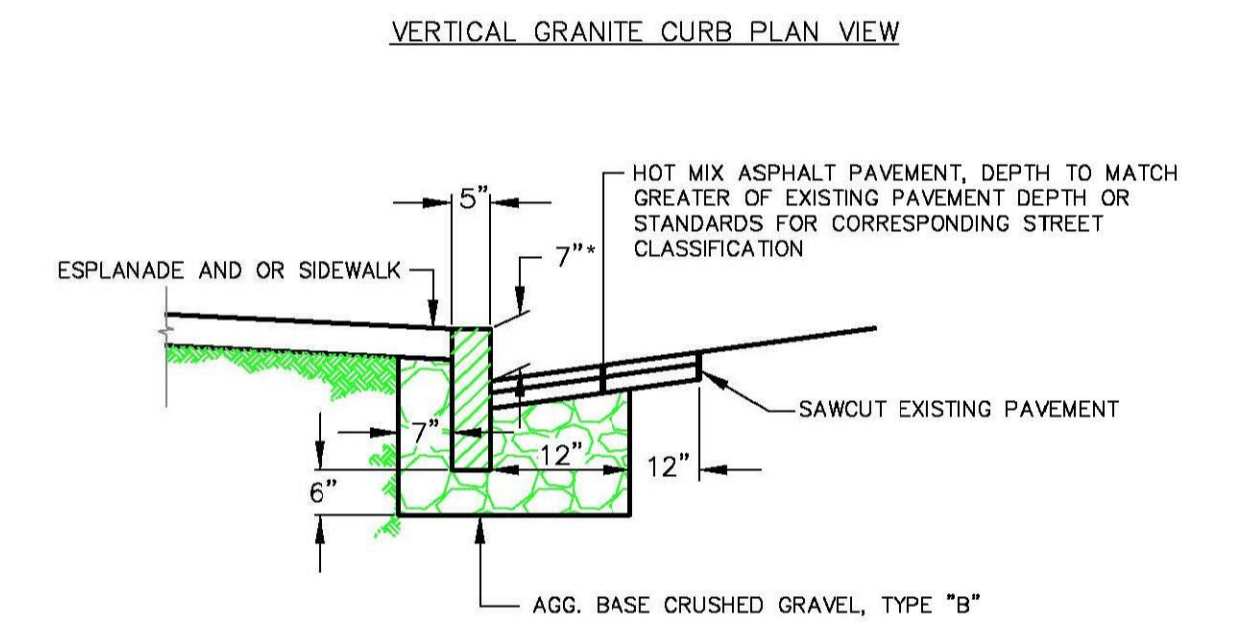
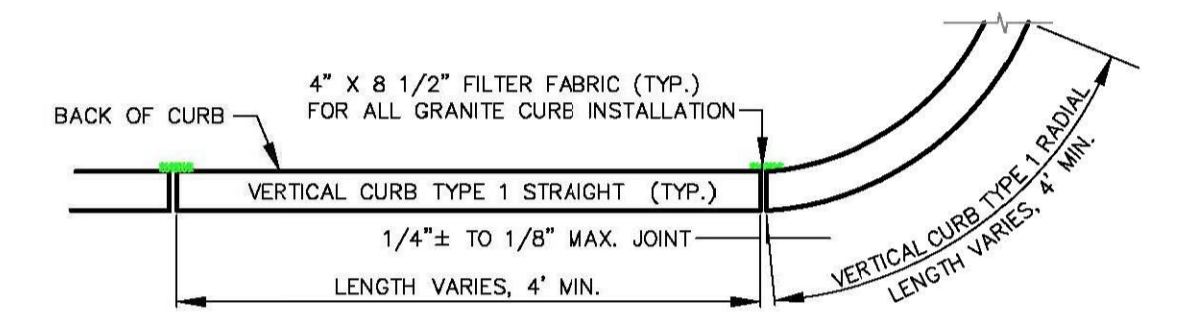
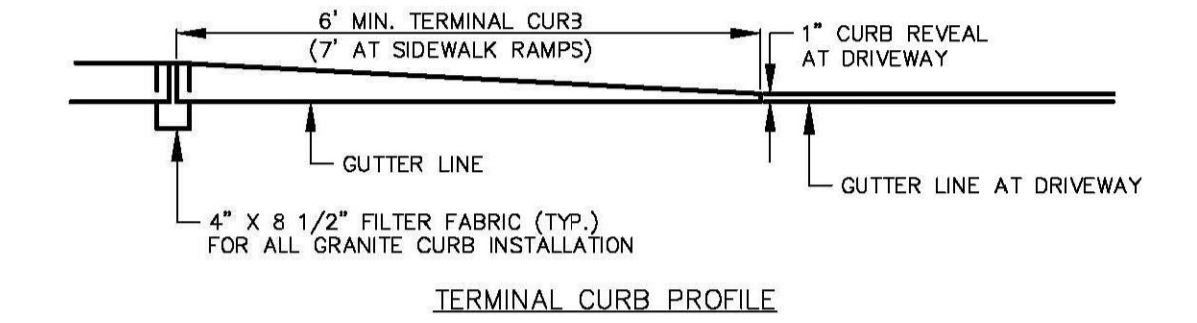
(H) N.T.S.

- NOTES:
1. VERTICAL GRANITE CURB TO MEET MeDOT STANDARD SPECIFICATIONS
 2. JOINTS SHALL BE MORTARED
 3. JOINT SEPARATION SHALL BE 1/4" AND 5/8"
 4. MAX. LENGTH OF STRAIGHT CURB STORIES = 8'; MIN. LENGTH = 4'
 5. CIRCULAR CURB REQUIRED FOR RADIUS LESS THAN 50'



VERTICAL GRANITE CURB DETAIL

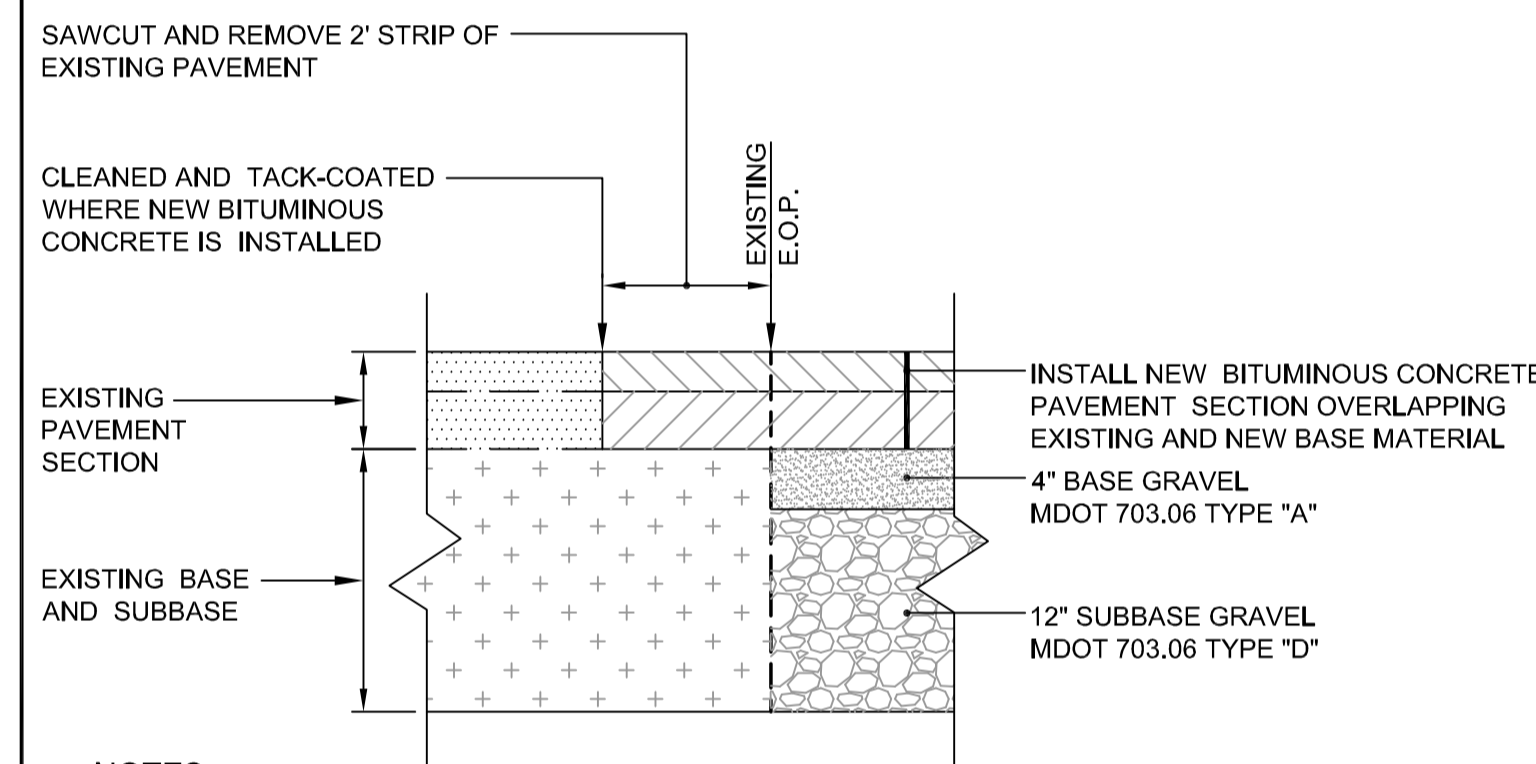
(J) N.T.S.



NOTE: GRANITE CURB TO BE REMOVED AND RESET ALONG ORIGINAL BUILDING LIMITS MAY MATCH EXISTING LIE. THE GRANITE STONE SITS ON A PORTION OF THE CONCRETE FOUNDATION BELOW. * EXCEPT ALONG LOCATIONS ADJACENT TO TREE WELLS WHERE CURB HEIGHT CAN BE REDUCED TO 5"

VERTICAL GRANITE CURB INSTALLATION IN EXISTING STREETS

(K) N.T.S.

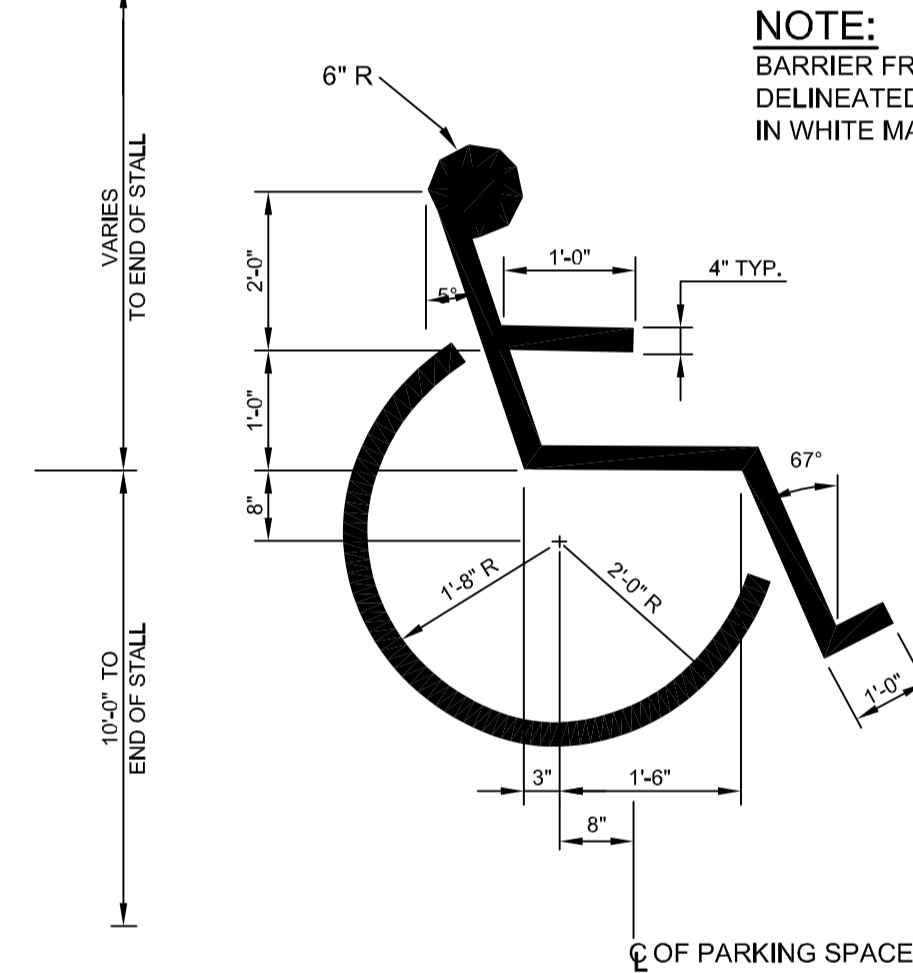


NOTES:

1. APPLY TACK COAT BETWEEN BINDER AND SURFACE COURSES.
2. ALL MATERIALS SHALL CONFORM TO MDOT SPECIFICATIONS, LATEST REVISION.
3. COMPACTION OF ALL MATERIALS TO BE IN ACCORDANCE WITH THE SPECIFICATIONS AND GEOTECHNICAL REPORTS PREPARED BY THE GEOTECHNICAL ENGINEER.

TYPICAL PAVEMENT SECTION NEW PAVEMENT ADJACENT TO EXISTING PAVEMENT

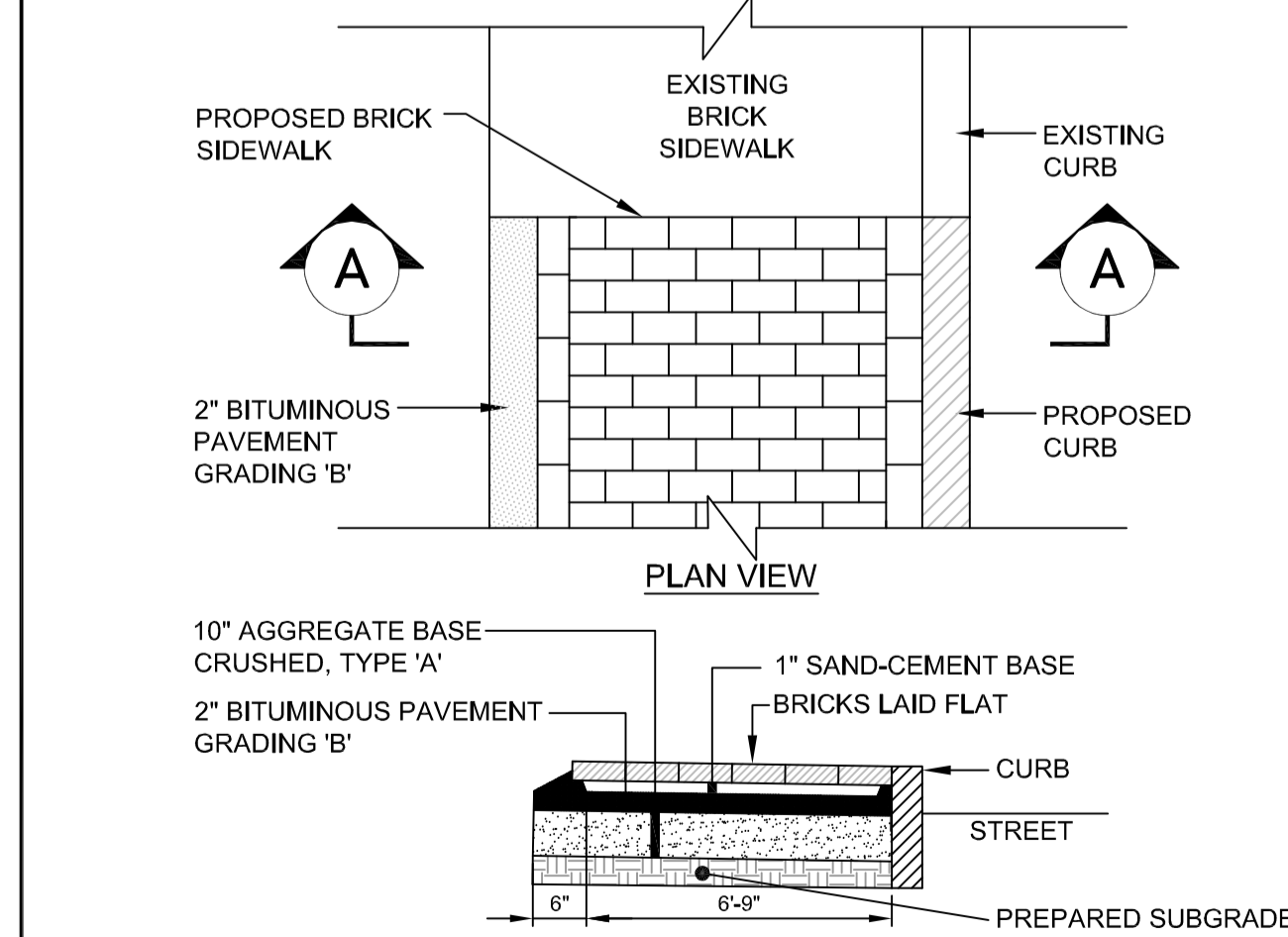
(B) N.T.S.



NOTE: BARRIER FREE STALLS SHALL BE DELINEATED WITH THIS SYMBOL IN WHITE MARKING.

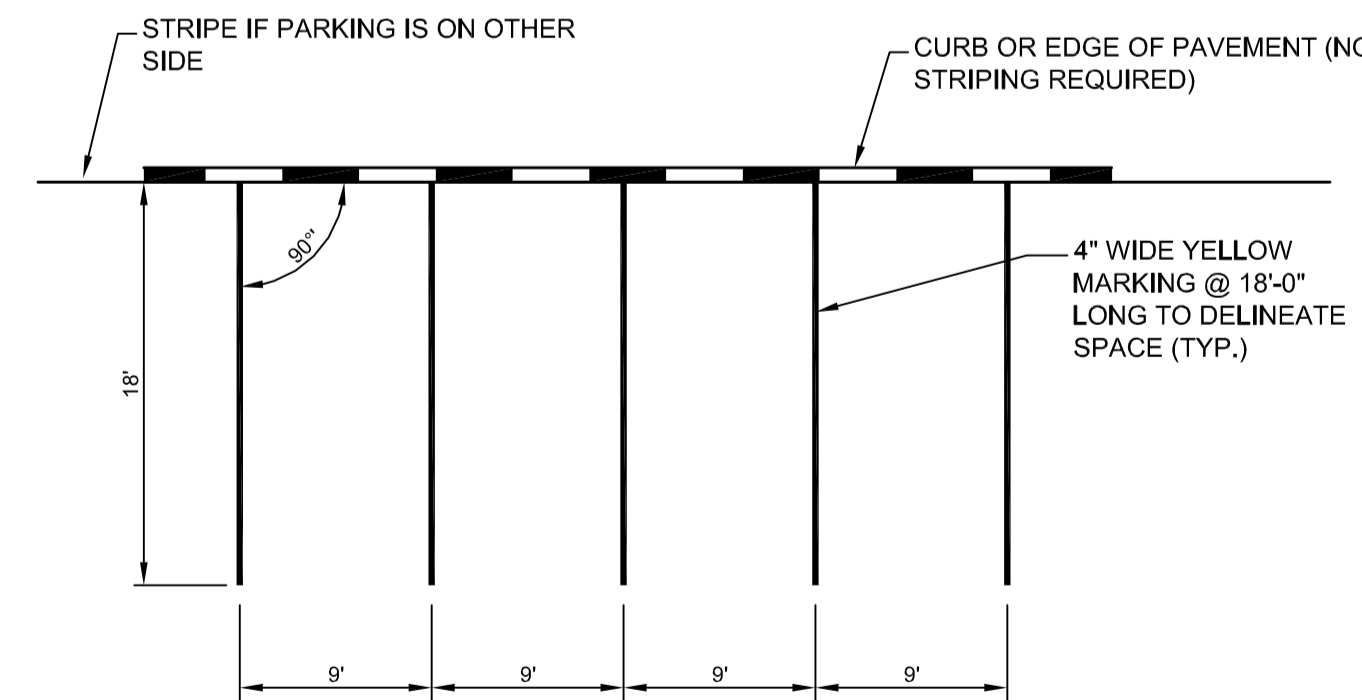
INTERNATIONAL BARRIER FREE SYMBOL

(E) N.T.S.



BRICK SIDEWALK WITH BITUMINOUS BASE

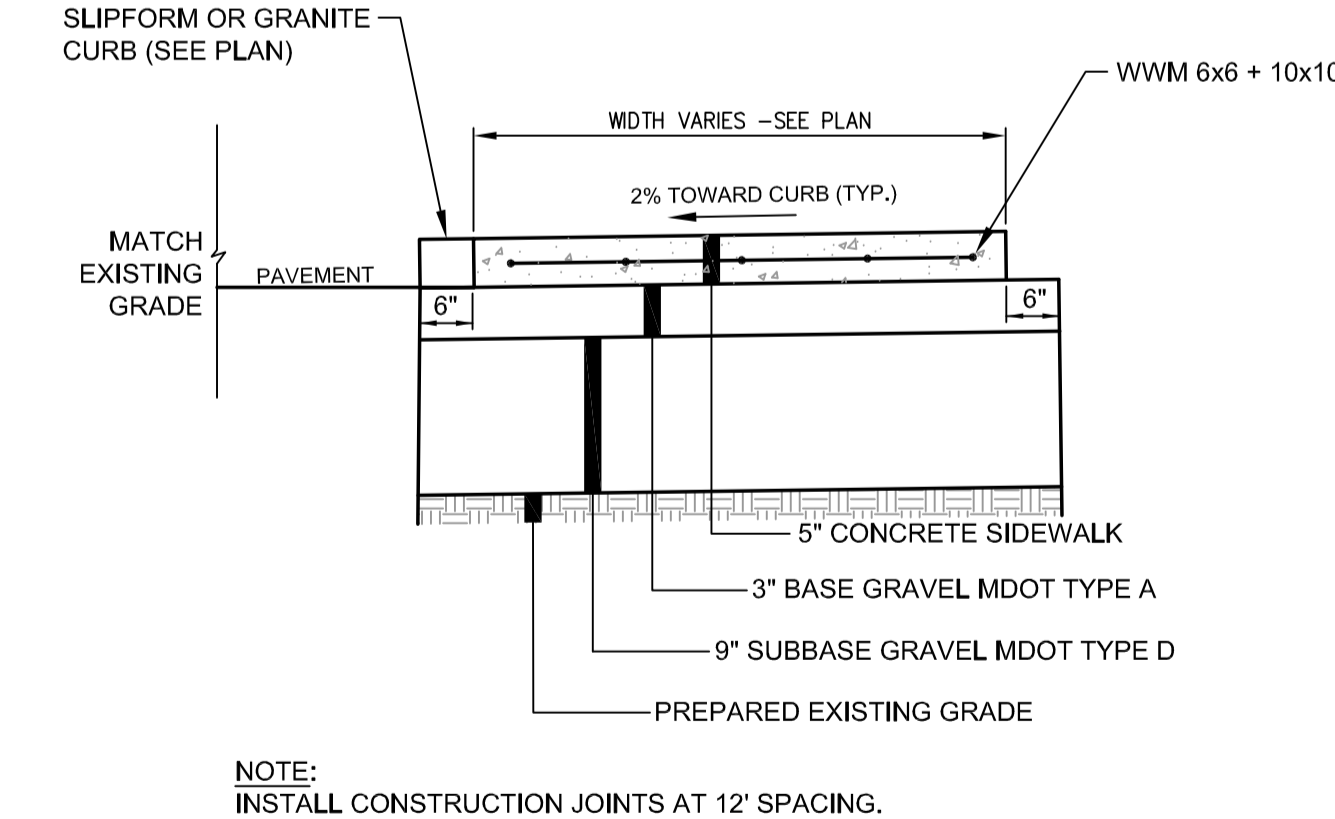
(C) N.T.S.



NOTE: WHEN PARKING IS ON A CURVE THE NARROWEST PORTION OF THE PARKING STALL SHALL MEET THE WIDTH SHOWN.

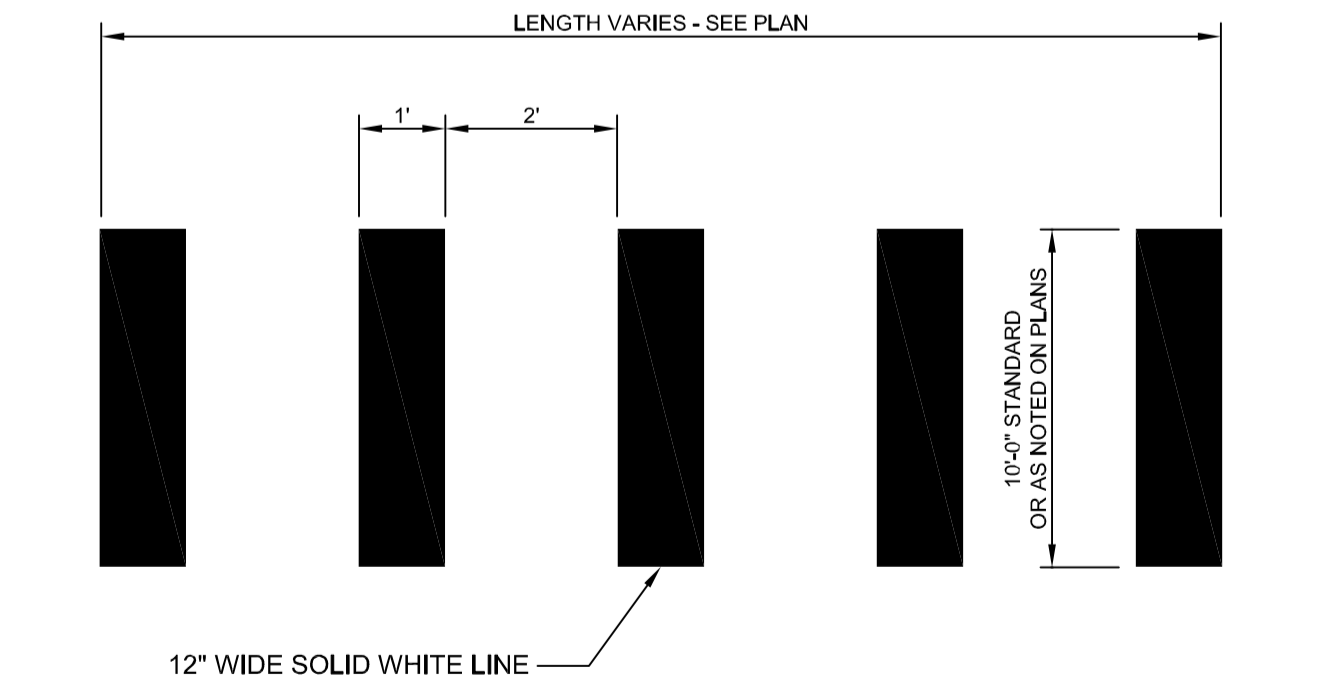
STANDARD PARKING STALL STRIPING

(F) N.T.S.



CONCRETE SIDEWALK DETAIL-NO CURB

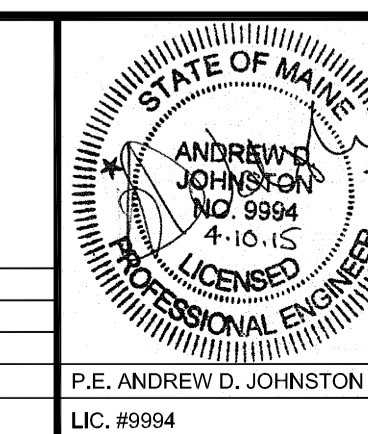
(I) N.T.S.



CROSSWALK STRIPING DETAIL

(L) N.T.S.

REV	DATE	DESCRIPTION
3	04.10.15	REVISED PER CITY COMMENTS
2	04.01.15	REVISED PER CITY COMMENTS
1	02.13.15	ISSUED FOR CITY PERMIT



PROJECT	CENTURY TIRE PLAZA 195 KENNEBEC STREET, PORTLAND, ME
SHEET TITLE	DETAILS
CLIENT	NORTHLAND ENTERPRISES, LLC

FST 100 YEARS	FAY, SPOFFORD & THORNDIKE ENGINEERS - PLANNERS - SCIENTISTS 778 MAIN ST., SUITE 8, SOUTH PORTLAND, ME 04106
DRAWN: KGS	DATE: 6/9/15
DESIGNED: ADJ	SCALE: AS NOTED ON PLANS
CHECKED: ADJ	JOB NO: 15-018
FILE NAME: SP-1	SHEET: C-7.0