



Primary view corridor from street

Shorten and narrow landscape strip

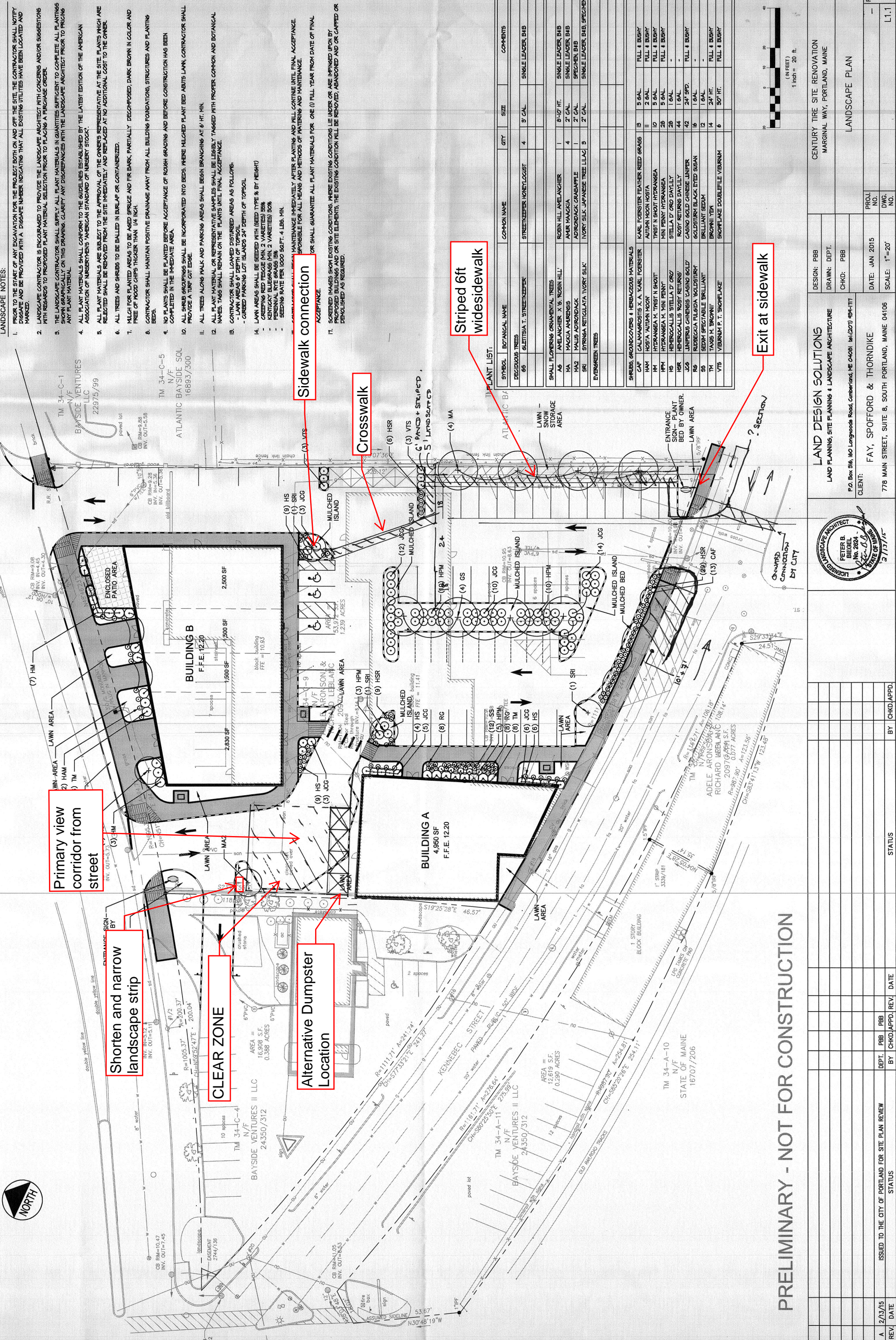
CLEAR ZONE

Alternative Dumpster Location

Crosswalk

Striped 6ft Widesidewalk

Exit at sidewalk



LANDSCAPE NOTES:

- 1. PRIOR TO THE START OF ANY EXCAVATION FOR THE PROJECT BOTH ON AND OFF THE SITE, THE CONTRACTOR SHALL NOTIFY THE OWNER AND BE PROVIDED WITH A DISSEMINATION NUMBER INDICATING THAT ALL EXISTING UTILITIES HAVE BEEN LOCATED AND MARKED.
2. LANDSCAPE CONTRACTOR IS ENCOURAGED TO PROVIDE THE LANDSCAPE ARCHITECT WITH CONCERNS AND/OR SUGGESTIONS WITH REGARDS TO PROPOSED PLANT MATERIAL SELECTION PRIOR TO PLACING A PURCHASE ORDER.
3. THE LANDSCAPE CONTRACTOR SHALL SUPPLY ALL PLANT MATERIALS IN QUANTITIES SUFFICIENT TO COMPLETE ALL PLANTINGS SHOWN GRAPHICALLY ON THIS DRAWING. CLARIFY ANY DISCREPANCIES WITH THE LANDSCAPE ARCHITECT PRIOR TO PLACING ANY PLANT MATERIAL.
4. ALL PLANT MATERIALS SHALL CONFORM TO THE GUIDELINES ESTABLISHED BY THE LATEST EDITION OF THE AMERICAN ASSOCIATION OF NURSERYMEN'S AMERICAN STANDARD OF NURSERY STOCK.
5. ALL PLANT MATERIALS ARE SUBJECT TO THE APPROVAL OF THE OWNER'S REPRESENTATIVE AT THE SITE. PLANTS WHICH ARE REJECTED SHALL BE REMOVED FROM THE SITE IMMEDIATELY AND REPLACED AT NO ADDITIONAL COST TO THE OWNER.
6. ALL TREES AND SHRUBS TO BE BALLED IN BURLAP OR CONTAINERIZED.
7. MULCH FOR PLANTED AREAS TO BE AGED SPRUCE AND FIR BARK, PARTIALLY DECOMPOSED, DARK BROWN IN COLOR, AND FREE OF MOOD CHIPS THICKER THAN 1/4 INCH.
8. CONTRACTOR SHALL MAINTAIN POSITIVE DRAINAGE AWAY FROM ALL BUILDING FOUNDATIONS, STRUCTURES AND PLANTING BEDS.
9. ALL PLANTS SHALL BE PLANTED BEFORE ACCEPTANCE OF ROUGH GRADING AND BEFORE CONSTRUCTION HAS BEEN COMPLETED IN THE IMMEDIATE AREA.
10. ALL SHRUB GROUPINGS SHALL BE INCORPORATED INTO BEDS, WHERE MULCHED PLANT BED ABUTS LAWN, CONTRACTOR SHALL PROVIDE A TURTLE EDGE.
11. ALL TREES ALONG WALK AND PARKING AREAS SHALL BEGIN BRANCHING AT 6 FT. MIN.
12. ALL PLANT MATERIAL OR REPRESENTATIVE SAMPLES SHALL BE LEGIBLY TAGGED WITH PROPER COMMON AND BOTANICAL NAMES. TAGS SHALL REMAIN ON THE PLANTS UNTIL FINAL ACCEPTANCE.
13. CONTRACTOR SHALL LANDSCAPE DISTURBED AREAS AS FOLLOWS:
- CURED PARKING LOT ISLANDS 24" DEPTH OF TOPSOIL
- LAWN AREAS SHALL BE SEEDING WITH (SEED TYPE & BY WEIGHT)
- CREEPING RED FESCUE (MIN. 2 VARIETIES) 50%
- PERENNIAL RYE GRASS (MIN. 2 VARIETIES) 50%
- SEEDING RATE PER 1000 SQ.FT.: 4 LBS. MIN.
14. MAINTENANCE IMMEDIATELY AFTER PLANTING AND WILL CONTINUE UNTIL FINAL ACCEPTANCE. RESPONSIBLE FOR ALL PESTS AND METHODS OF PESTICIDES AND MAINTENANCE.
15. CONTRACTOR SHALL GUARANTEE ALL PLANT MATERIALS FOR ONE (1) FULL YEAR FROM DATE OF FINAL ACCEPTANCE.
16. SCHEDULED MAKES SURE EXISTING CONDITIONS, WHERE EXISTING CONDITIONS ARE IMPROVED UPON BY PROPOSED BUILDINGS AND/OR SITE ELEMENTS, THE EXISTING CONDITION WILL BE REMOVED, ABANDONED AND OR CAPTED OR DEMOLISHED AS REQUIRED.

IMPLANT LIST:

Table with columns: SYMBOL, BOTANICAL NAME, COMMON NAME, QTY, SIZE, COMMENTS. Lists various plant species like 'GALTISIA T. STREPTOCARPUS', 'ROBIN HILL ANELANGHER', etc.



PRELIMINARY - NOT FOR CONSTRUCTION

Professional information block including: LAND DESIGN SOLUTIONS, LAND PLANNING, SITE PLANNING & LANDSCAPE ARCHITECTURE; CLIENT: FAY, SPOFFORD & THORNDIKE; PROJECT NO., DATE, SCALE, and a table for revision tracking.