



COASTAL ARCHITECTS, P.A.

REVISIONS

BI COASTAL ARCHITECTURE LLC RESERVES THEIR COMMON LAW COPYRIGHT AND OTHER PROPERTY RIGHTS IN THESE PLANS. THESE PLANS ARE NOT TO BE REPRODUCED, CHANGED, OR COPIED IN ANY MANNER WITHOUT FIRST OBTAINING THE EXPRESS WRITTEN PERMISSION AND CONSENT OF BI COASTAL ARCHITECTURE LLC. NOR ARE THEY TO BE ASSIGNED TO ANY THIRD PARTY WITHOUT OBTAINING SAID PERMISSION AND CONSENT.

ISSUE

19 JULY '16 PROGRESS

22 JULY '16 BLDG PERMIT

PROJECT:

ORANGE THEORY FITNESS CENTER
Portland, Maine

PROJECT ADDRESS:

195 KENNEBEC STREET
PORTLAND, MAINE 04101

OWNERS ADDRESS:

DWAYNE DUFREY
6 CRESTWOOD DRIVE
HUDSON, NH 03051

PROJECT NO. 051601

DRAWN BY B.M.R.

APPROVED BY B.M.R.

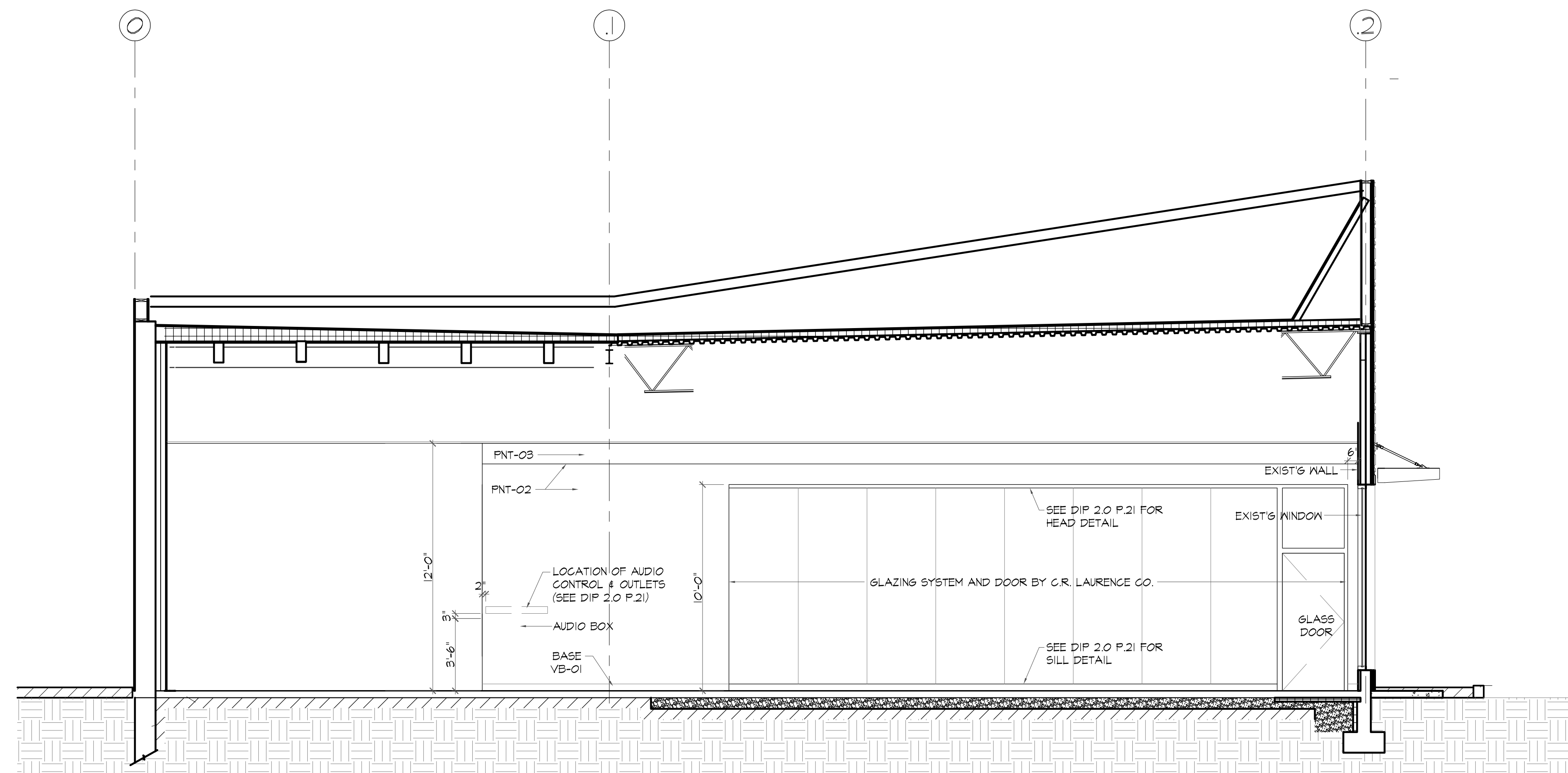
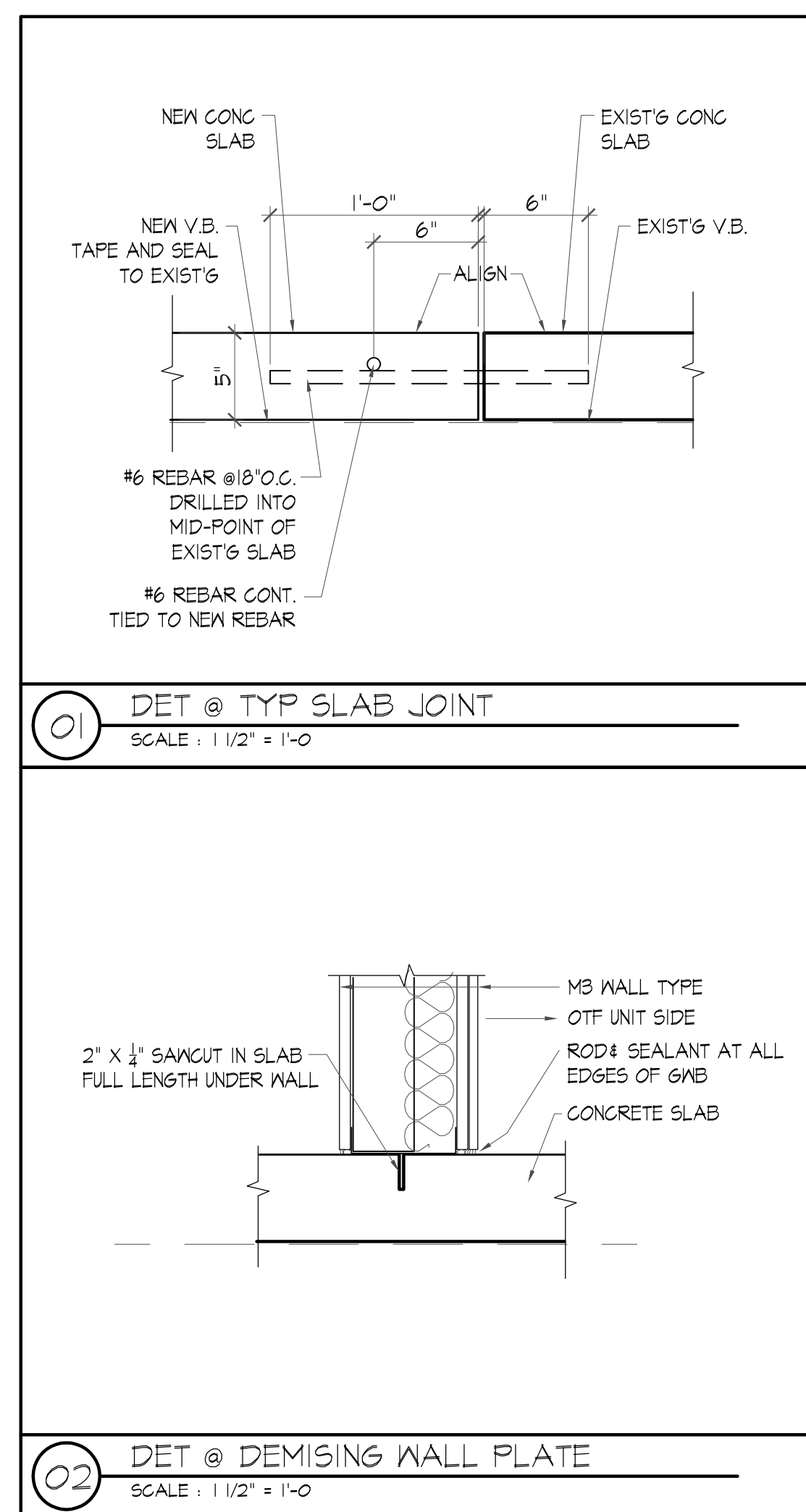
DATE 22-JULY-16

SCALE 1/4" = 1'-0"

TITLE SECTION & SCHEDULE

SHEET NUMBER

A-3.0



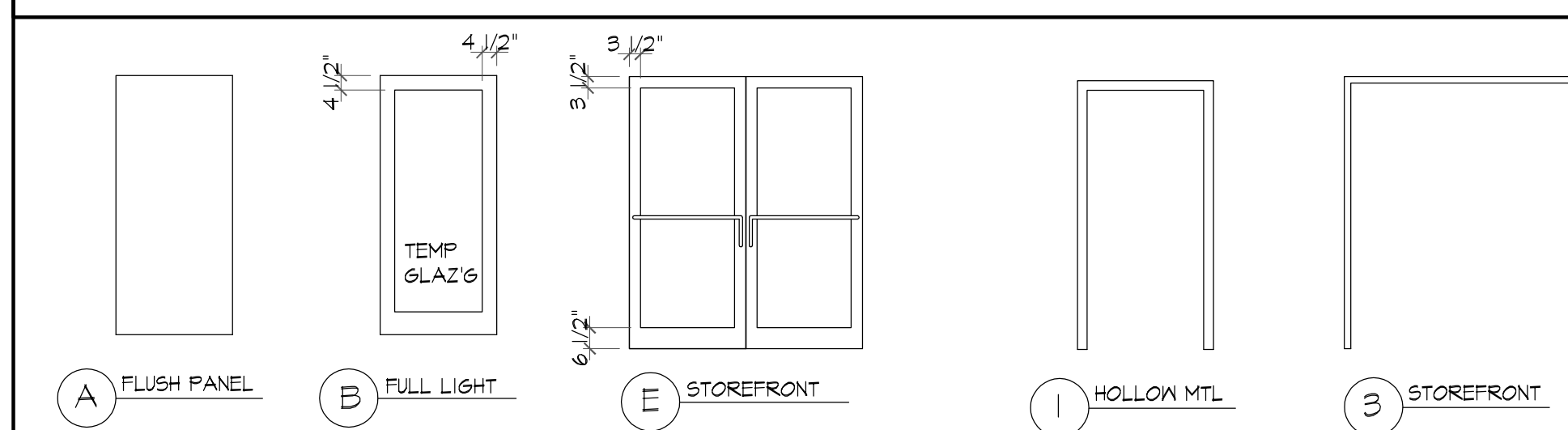
18 BUILDING SECTION
SCALE: 1/4" = 1'-0"

19 ROWING WALL ELEV
SCALE: 1/4" = 1'-0"

DOOR, FRAME, HARDWARE SCHEDULE

LOCATION	R/NR	ROOM NAME	DOOR NO.	DOORS							FRAMES		HARDWARE	
				MATERIAL	SIZE	TYPE	SERIES AND GUAGE	FIRE RAT'G	REMARKS	TYPE	GROUP			
				WOOD	H.M.	W.	H.	T.					HARDWARE GROUP SCHEDULE	
GROUND LEVEL		LOBBY	101	X	2'-3'-0"	7'-0"	1 3/4"	E			EXIST'G STOREFRONT	3	GROUP #1	
		WORKOUT AREA	102	X	2'-3'-0"	7'-0"	1 3/4"	E			EXIST'G DOOR / CLOSED	3	1. 1 EACH PASSAGE SET 2. 1 1/2 EACH PAIR HINGES 3. 1 EACH DOOR STOP	
		WORKOUT AREA	103	X	3'-0"	7'-0"	1 3/4"	A			EXIST'G EGRESS	1	3. 1 EACH DOOR STOP	
		OFFICE	104	X	3'-0"	6'-8"	1 3/4"	A				1	3	
		HCWC #1	105	X	3'-0"	6'-8"	1 3/4"	A				1	2	
		HCWC #2	106	X	3'-0"	3'-6"	1 3/4"	A			WITH CLOSER	1	4	
		SHOWER	107	X	3'-0"	6'-8"	1 3/4"	A				1	2	
		JANITOR	108	X	2'-6"	6'-8"	1 3/4"	A				1	3	
		HC SHOWER	109	X	3'-0"	6'-8"	1 3/4"	A				1	2	
		WORKOUT AREA	110	X	3'-0"	6'-8"	1 3/4"	B				1	5	
		STORAGE #1	111	X	3'-0"	6'-8"	1 3/4"	A				1	3	
		WORKOUT AREA	112		3'-0"	7'-0"	3/4"				DOOR/GLASS WALL UNIT BY C.R. LAURENCE		3	

DOOR AND FRAME ELEVATIONS



- GROUP #5
1. 1 EACH PUSH/PULL PLATE
2. 1 1/2 EACH PAIR HINGES
3. 1 EACH DOOR STOP
4. 1 EACH DOOR CLOSURE
- GROUP #6
1. 1 EACH EGRESS HARDWARE
2. 2 EACH PAIR HINGES
3. 1 EACH DOOR CLOSER
4. WEATHERSTRIPPING
5. H.C. THRESHOLD