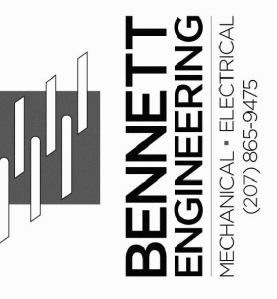


Prepared For:



Consulting Engineer:

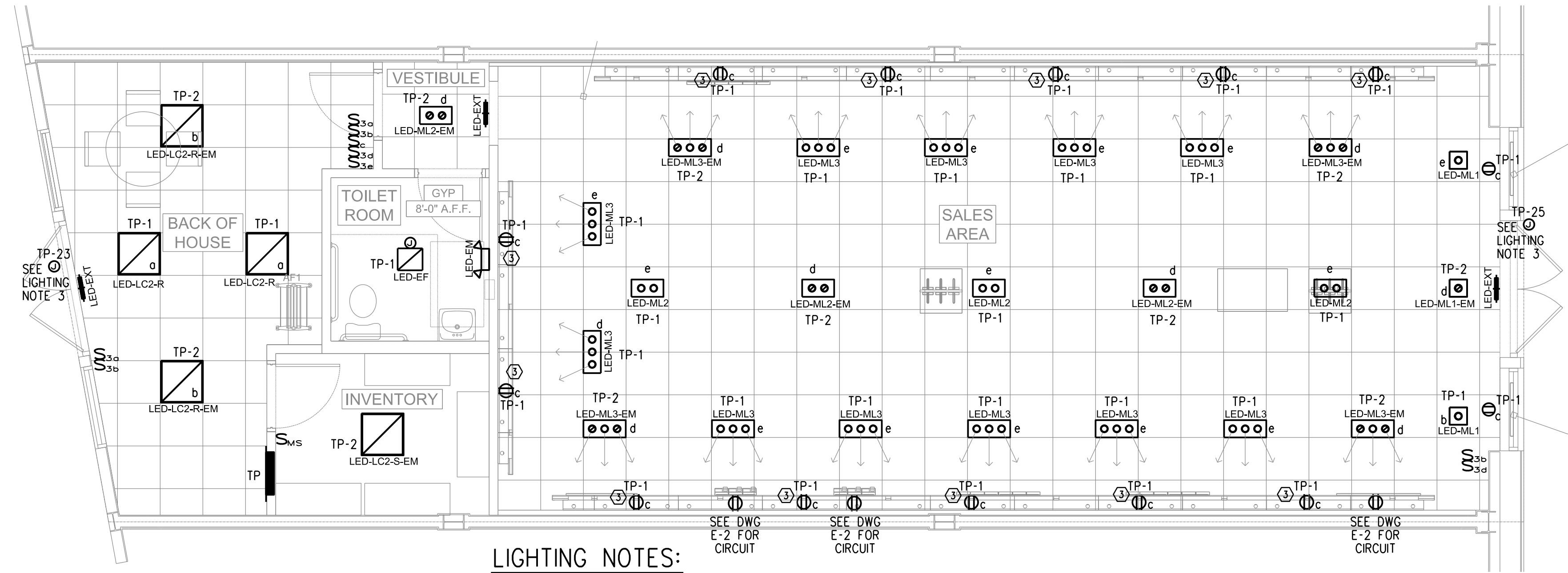
Architect:

Project:
T-MOBILE
 FIT-UP BUILDING B SUITE 2
 195 KENNEBEC ST
 PORTLAND, ME 04101

Revisions:
 03-23-2016 PERMIT DRAWINGS

Date: MARCH 23, 2016
 Scale: As Noted

E-1



- LIGHTING NOTES:**
- CONTRACTOR SHALL COORDINATE AMING OF ALL LIGHTING WITH OWNER PRIOR TO ROUGH-IN.
 - CONTRACTOR SHALL VERIFY ALL LIGHT SWITCH LOCATIONS WITH OWNER PRIOR TO ROUGH-IN.
 - CONTRACTOR SHALL COORDINATE LOCATION OF SIGN J-BOX WITH OWNER AND SIGN PROVIDER PRIOR TO ROUGH-IN

SYMBOL	DESCRIPTION	SYMBOL	DESCRIPTION
	SINGLE HEAD ADJUSTABLE GIMBAL RING 358"H X 45"V, 40' LEDPAR30, FLUSH MOUNT FIXTURE		SURFACE MOUNTED 2'x2' LED EDGE-LIT FLAT DIMMABLE PANEL, 4000K, WHITE PAINTED ALUMINUM FINISH
	SINGLE HEAD ADJUSTABLE GIMBAL RING 358"H X 45"V, 40' LEDPAR30, FLUSH MOUNT FIXTURE - WIRED TO MINI-INVERTER FOR EMERGENCY OPERATION		SURFACE MOUNTED 2'x2' LED EDGE-LIT FLAT DIMMABLE PANEL, 4000K, WHITE PAINTED ALUMINUM FINISH, WIRED TO BOH INVERTER FOR EMERGENCY OPERATION
	DUAL HEAD ADJUSTABLE GIMBAL RING 358"H X 45"V, 40' LEDPAR30, FLUSH MOUNT FIXTURE		PENDANT MOUNTED 2'x2' LED EDGE-LIT FLAT DIMMABLE PANEL, 4000K, WHITE PAINTED ALUMINUM FINISH
	DUAL HEAD ADJUSTABLE GIMBAL RING 358"H X 45"V, 40' LEDPAR30, FLUSH MOUNT FIXTURE - WIRED TO MINI-INVERTER FOR EMERGENCY OPERATION		PENDANT MOUNTED 2'x2' LED EDGE-LIT FLAT DIMMABLE PANEL, 4000K, WHITE PAINTED ALUMINUM FINISH, WIRED TO BOH INVERTER FOR EMERGENCY OPERATION
	TRIPLE HEAD ADJUSTABLE GIMBAL RING 358"H X 45"V, 40' LEDPAR30, FLUSH MOUNT FIXTURE		PANASONIC CEILING MOUNTED VENTILATION FAN WITH LED LIGHT MOTION SENSOR.
	TRIPLE HEAD ADJUSTABLE GIMBAL RING 358"H X 45"V, 40' LEDPAR30, FLUSH MOUNT FIXTURE - WIRED TO MINI-INVERTER FOR EMERGENCY OPERATION		NORA LIGHTING WHITE LED EXIT SIGN WITH BATTERY BACKUP
	RECESSED 2'x2' LED EDGE-LIT FLAT DIMMABLE PANEL, 4000K, WHITE PAINTED ALUMINUM FINISH		EMERGH-LITE RECESSED EMERGENCY LED LIGHTING
	RECESSED 2'x2' LED EDGE-LIT FLAT DIMMABLE PANEL, 4000K, WHITE PAINTED ALUMINUM FINISH, WIRED TO BOH INVERTER FOR EMERGENCY OPERATION		NORA LIGHTING WHITE LED EXIT SIGN WITH EMERGENCY LIGHTING
			CEILING SYSTEM / FINISH 10'-6" A.F.F. CEILING HEIGHT

- LIGHTING, ELECTRICAL EQUIPMENT, HVAC EQUIPMENT, AND SPRINKLERS ARE TO BE MOUNTED AT POINTS IN ACT AS NOTED IN GRAPHIC BELOW UNLESS OTHERWISE DIMENSIONED ON RCP.
 - 2X2 ACT TILE
 - 2X4 ACT TILE
- CENTER ACT GRID WITHIN EACH ROOM UNLESS OTHERWISE NOTED.
- NO CEILING REQUIRED IN JANITORS CLOSET, IF APPLICABLE.
- PLACEMENT AND NUMBER OF EMERGENCY LIGHTS, NIGHT LIGHTS, AND EXIT LIGHTS ALONG WITH MOUNTING HEIGHT TO BE CONFIRMED BY PARTNER'S ARCHITECT. SPECIFICATIONS SHOWN ARE FOR REFERENCE ONLY.
- GC TO ADJUST PERIMETER ADJUSTABLE LIGHTS TO BE TARGETED BETWEEN 5'-9" TO 6'-3" VERTICALLY FROM FLOOR TO WASH RETAIL WALL DISPLAYS.

G.C SHALL INSTALL CEILING IN ACCORDANCE WITH
 ICC ESR 1308
 ICC ESR 1289
 IBC SECTION 2508

GENERAL CONTRACTOR SHALL FIELD VERIFY EXISTING EGRESS LIGHTING AND PROVIDE NEW EMERGENCY LIGHT FIXTURES AS REQUIRED BY FIRE MARSHALL

GC TO CONTACT EDSS ENERGY DESIGN SERVICE SYSTEMS FOR T-MOBILE PREFERRED PRICING:
 CONTACT MICHAEL NORDLOH
 810-227-3377
 MNORDLOH@EDSSENERGY.COM

