

© 2016 RYAN SENATORE ARCHITECTURE

T-MOBILE FIT-UP
 195 KENNEBEC STREET, BUILDING B, SUITE 32
 PORTLAND, MAINE



RYAN SENATORE ARCHITECTURE
 565 CONGRESS STREET
 PORTLAND, MAINE 04101
 207-550-6414
 senatorsarchitecture.com

CONSULTANTS:

REVISIONS:

DATE: MARCH 24, 2016

PROJECT No. 1619

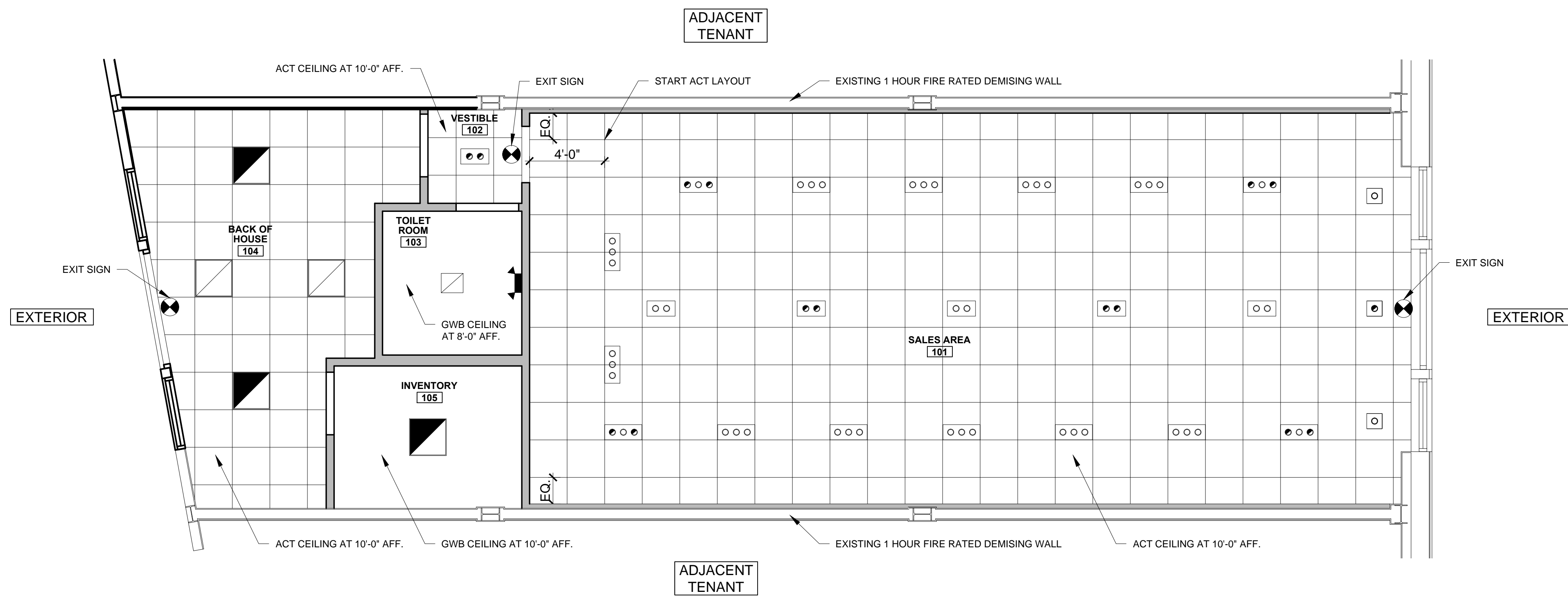
DRAWN BY:

CHECKED BY: RJS

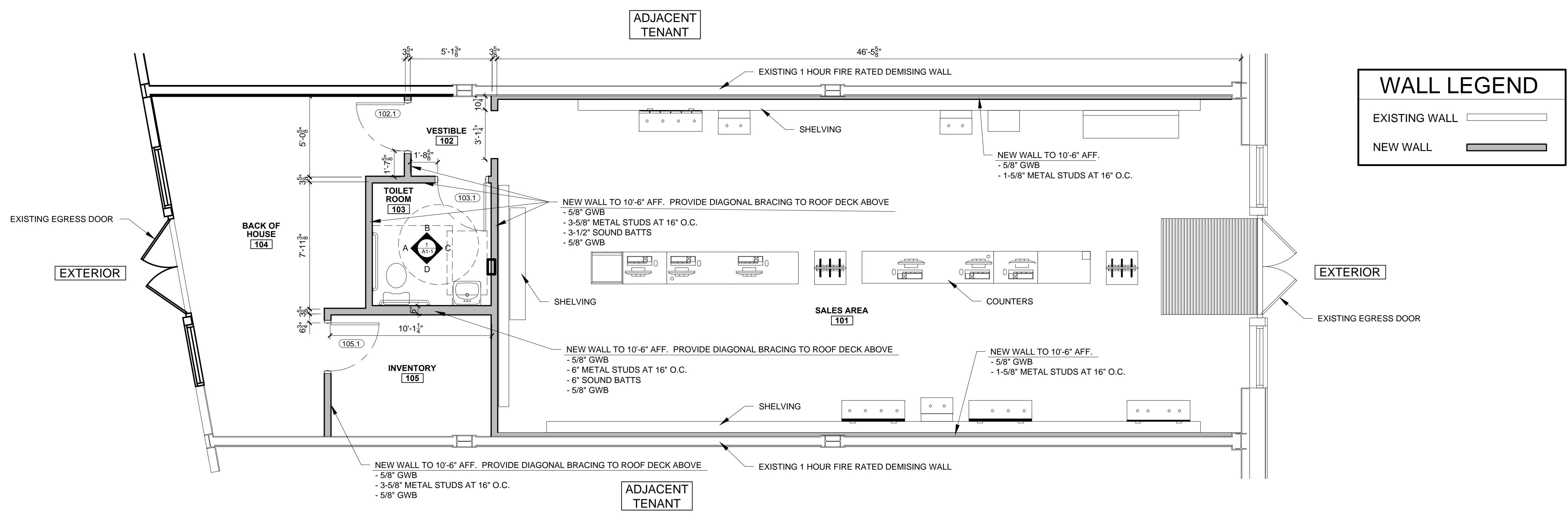
SCALE: AS NOTED

SHEET TITLE:
FLOOR PLAN

A1-0



2 REFLECTED CEILING PLAN
 1/4" = 1'-0"



1 FLOOR PLAN
 1/4" = 1'-0"