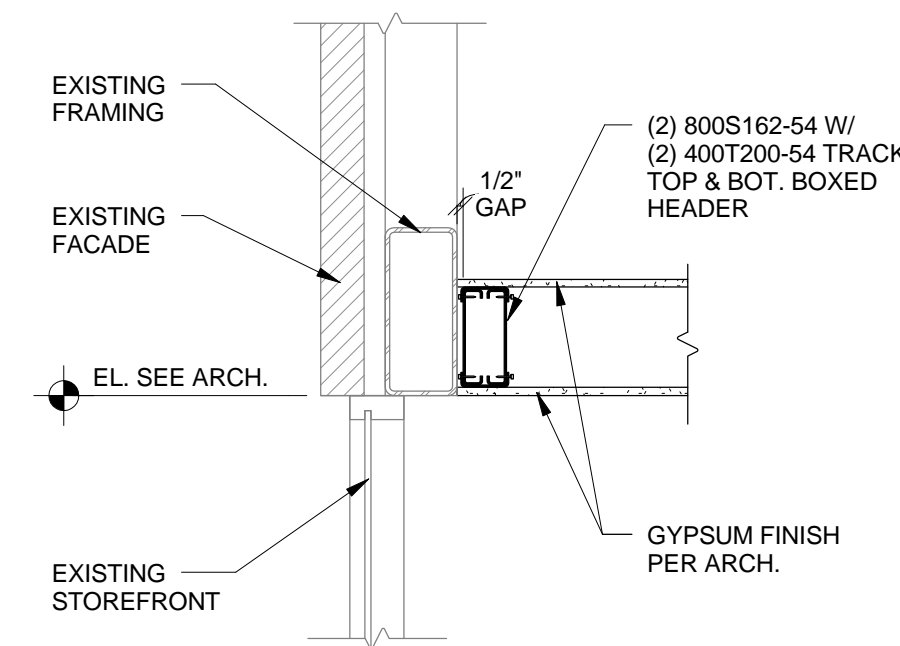


VESTIBULE FRAMING PLAN

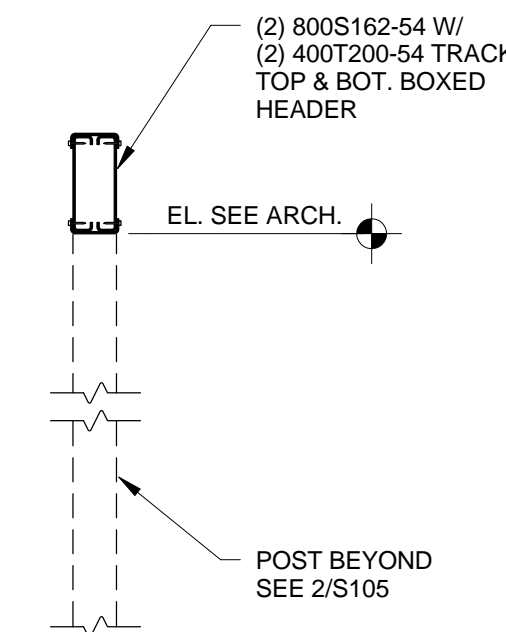
1/4" = 1'-0"

COLD-FORMED METAL FRAMING

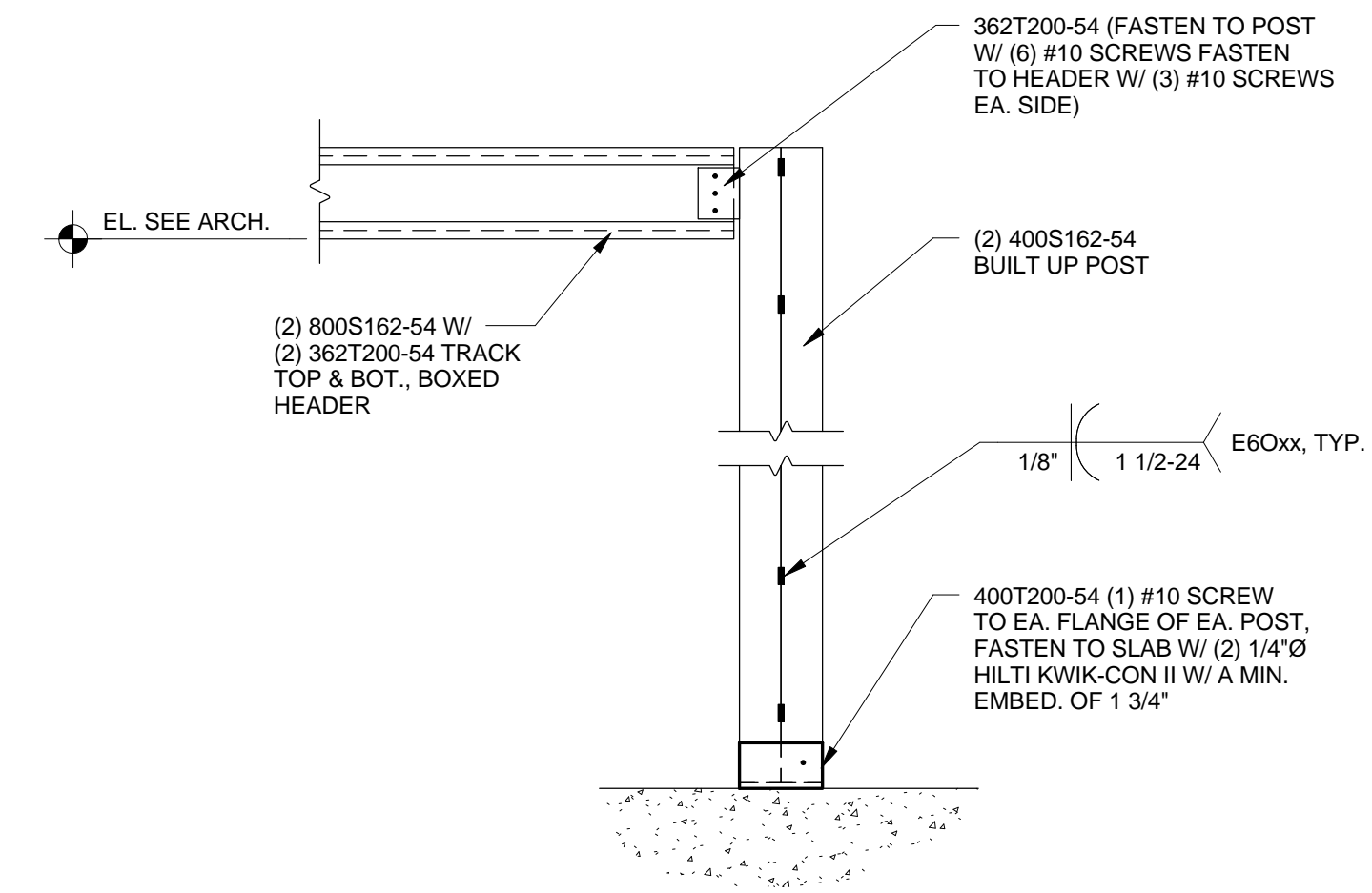
1. MATERIALS:
 - A. COLD-FORMED METAL STUDS AND JOISTS SHOWN ON THE CONTRACT DOCUMENTS ARE DESIGNATED BY "DEPTH", "SHAPE", "WIDTH", AND "THICKNESS" AS FOLLOWS:
 - 1) DEPTH: 362 = 3'-6 1/8"; 600 = 6"; 800 = 8"; ETC.
 - 2) SHAPE: S = C-SHAPE; T = TRACK; U = CHANNEL
 - 3) WIDTH: 125 = 1'-1/4"; 162 = 1'-5/8"; 200 = 2"; ETC.
 - 4) THICKNESS: -16 (25 GA.); -33 (20 GA.); -43 (18 GA.); -54 (16 GA.); -68 (14 GA.)
 - B. ALL 16 GA AND LIGHTER STUDS TO BE 33 KSI MATERIAL; ALL 16 GA AND HEAVIER STUDS TO BE 50 KSI MATERIAL.
 - C. ALL TRACKS AND ACCESSORIES: FY = 33 KSI MINIMUM.
2. SPECIFICATIONS: WELDING PERSONNEL AND PROCEDURES ARE TO BE QUALIFIED PER AWS. DESIGN, FABRICATION, AND ERECTION TO BE GOVERNED BY LATEST REVISIONS OF:
 - A. AISC "SPECIFICATION OF THE DESIGN OF COLD-FORMED STEEL STRUCTURAL MEMBERS."
 - B. STRUCTURAL WELDING CODE, AWS D1.3 OF THE AMERICAN WELDING SOCIETY.
3. CONNECTIONS:
 - A. FIELD CONNECTIONS MAY BE EITHER WELDED OR SCREWED, EXCEPT AS SPECIFICALLY DETAILED OTHERWISE.
 - B. WELD SIZE TO BE 1/8" WITH AWS TYPE 6013 OR 7014 ROD.
 - C. EXCEPT AS NOTED OTHERWISE, MECHANICAL FASTENERS TO BE SELF TAPPING #10-16 SCREWS.
4. FINISH:
 - A. ALL MATERIAL TO BE GALVANIZED COATED IN ACCORDANCE WITH ASTM A525 G-60.
 - B. TOUCH-UP FIELD WELDS WITH ZINC RICH PAINT.
5. MISCELLANEOUS:
 - A. ALL FIELD CUTTING TO BE PERFORMED WITH A SAW.
 - B. TRACKS TO BE SECURELY ANCHORED TO SUPPORTING STRUCTURE WITH WELD OR SCREW AT EACH SIDE OF TRACKS.
 - C. PROVIDE HORIZONTAL BRIDGING AT 48" O.C. MAX. FOR ALL STUD WALLS, UNLESS NOTED OTHERWISE.
 - D. EACH MEMBER OF MULTIPLE MEMBER COLUMNS SHALL BE SCREWED TOGETHER USING FULL-HEIGHT TRACKS AND #10 SCREWS AT 12" O.C. ALTERNATELY, MULTIPLE MEMBER COLUMNS MAY BE WELDED TOGETHER WITH A 1" WELD AT 16" ON CENTER, EACH SIDE, EACH PIECE, FOR THE FULL LENGTH OF THE COLUMN.



SECTION 1
3/4" = 1'-0"



SECTION 3
3/4" = 1'-0"



SECTION 2
3/4" = 1'-0"



COPYRIGHT 2015
THIS DRAWING IS AN INSTRUMENT OF SERVICE AND AS SUCH REMAINS THE PROPERTY OF CHIPOTLE MEXICAN GRILL, INC. PERMISSION FOR USE OF THIS DOCUMENT IS LIMITED AND CAN BE EXTENDED ONLY BY WRITTEN AGREEMENT WITH CHIPOTLE MEXICAN GRILL, INC.



CHIPOTLE MEXICAN GRILL, INC.
1460 WYNDROP STREET, SUITE 500
DENVER, COLORADO 80202
TELEPHONE: (303) 595-4000
FAX: (303) 595-4014
INTERNET: WWW.CHIPOTLE.COM

STORE NO.: 2603
PORTLAND MARGINAL WAY
195 KENNEBEC ST.
PORTLAND, ME 04101

Issue Record:
09/15/15 PERMIT/LANDLORD REVIEW

Revisions:

Drawn: CMS
Checked: ASH

Project No.
15.34.125

Contents:
VESTIBULE FRAMING
PLAN & DETAILS

S105

Date of Last Print:
9/15/15