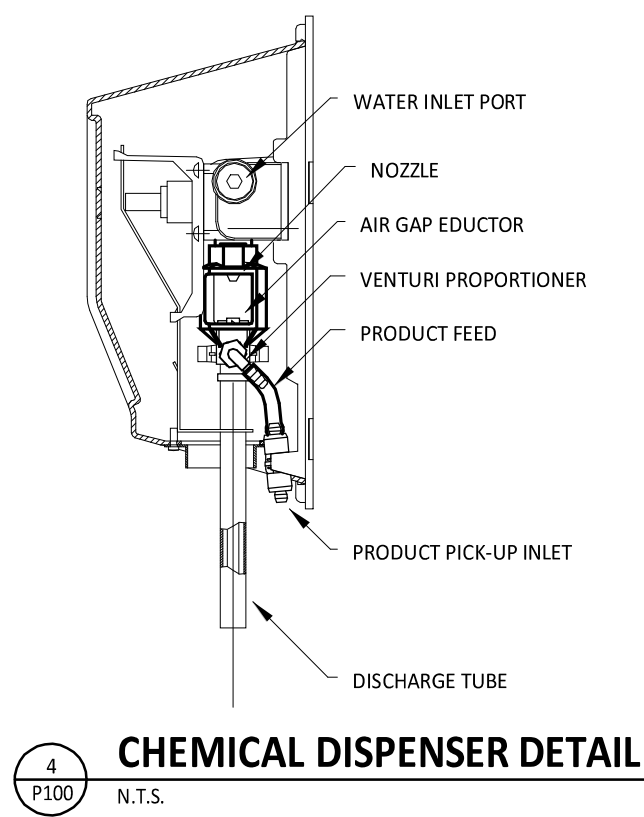


ABBREVIATIONS

AFF	ABOVE FINISHED FLOOR
AFG	ABOVE FINISHED GRADE
CD	CEILING DIFFUSER
EXT'G	EXISTING
FCO	FLOOR CLEANOUT
FD	FLOOR DRAIN
FS	FLOOR SINK
GCO	GRADE CLEANOUT
CO2AS	TENANT'S CO2 ALARM SUPPLIER
GC	GENERAL CONTRACTOR
HES	TENANT'S HVAC EQUIPMENT SUPPLIER
TAB	TENANT'S TEST AND BALANCE VENDOR
TCC	TENANT'S CABLING CONTRACTOR
KES	TENANT'S KITCHEN EQUIPMENT SUPPLIER
HS	TENANT'S HOOD SUPPLIER
TLS	TENANT'S LIGHT/LAMP SUPPLIER
TMB	TENANT'S MENU BOARD SUPPLIER
TMS	TENANT'S MILLWORK SUPPLIER
TP	TENANT'S PHONE SUPPLIER
TBS	TENANT'S TRAILING SUPPLIER
TSV	TENANT'S SIGN VENDOR
WCS	TENANT'S WALK-IN COOLER SUPPLIER

PLUMBING SYMBOLS

	ELBOW UP
	ELBOW DOWN
	DOMESTIC COLD WATER
	DOMESTIC FILTERED COLD WATER
	DOMESTIC SOFTENED COLD WATER
	DOMESTIC HOT WATER (110 DEGREES)
	DOMESTIC HOT WATER RECIRC.
	GAS
	GAS (ON ROOF)
	PLAN NOTE: SEE PLAN NOTES LISTED ON THE SAME SHEET FOR NOTE MEANING
	CONNECT TO EXISTING
	REDUCED PRESSURE ZONE BACKFLOW PREVENTER
	WATER METER
	GAS METER
	EQUIPMENT TAG: SEE EQUIPMENT SCHEDULE ON SHEET P200 FOR EQUIPMENT INFORMATION
	VALVE
	SOLENOID-OPERATED VALVE
	WALL HYDRANT/ROOF HYDRANT
	CHECK VALVE
	CIRCUIT-SETTER BALANCE VALVE RATED FOR POTABLE WATER



MATERIAL SCHEDULE

CATEGORY	APPLICATION	ALLOWABLE MATERIAL
WATER SUPPLY PIPE	ABOVE GRADE	TYPE L COPPER TUBE
NATURAL GAS PIPE	CONCEALED	SCH. 40 STEEL PIPE, MALLEABLE IRON THREADED FITTINGS
	EXPOSED	SCH. 40 STEEL PIPE, MALLEABLE IRON THREADED FITTINGS, PAINTED

CONNECTED GAS LOAD

FIXTURE	TAG	MBH	EQUIVALENT LENGTH FROM METER [FT]
WATER HEATER	DWH-1	199	115
WATER HEATER	DWH-2	199	115
FRYER	FB-1	95	120
GRIDDLE	GR-1	107	135
MAKEUP AIR UNIT	MAU-1	225	60
RICE COOKER	RC-1	35	125
RANGE	RN-1	192	130
ROOFTOP UNIT	RTU-1	120	90
ROOFTOP UNIT	RTU-2	200	65
Grand total		1372	MAX: 135

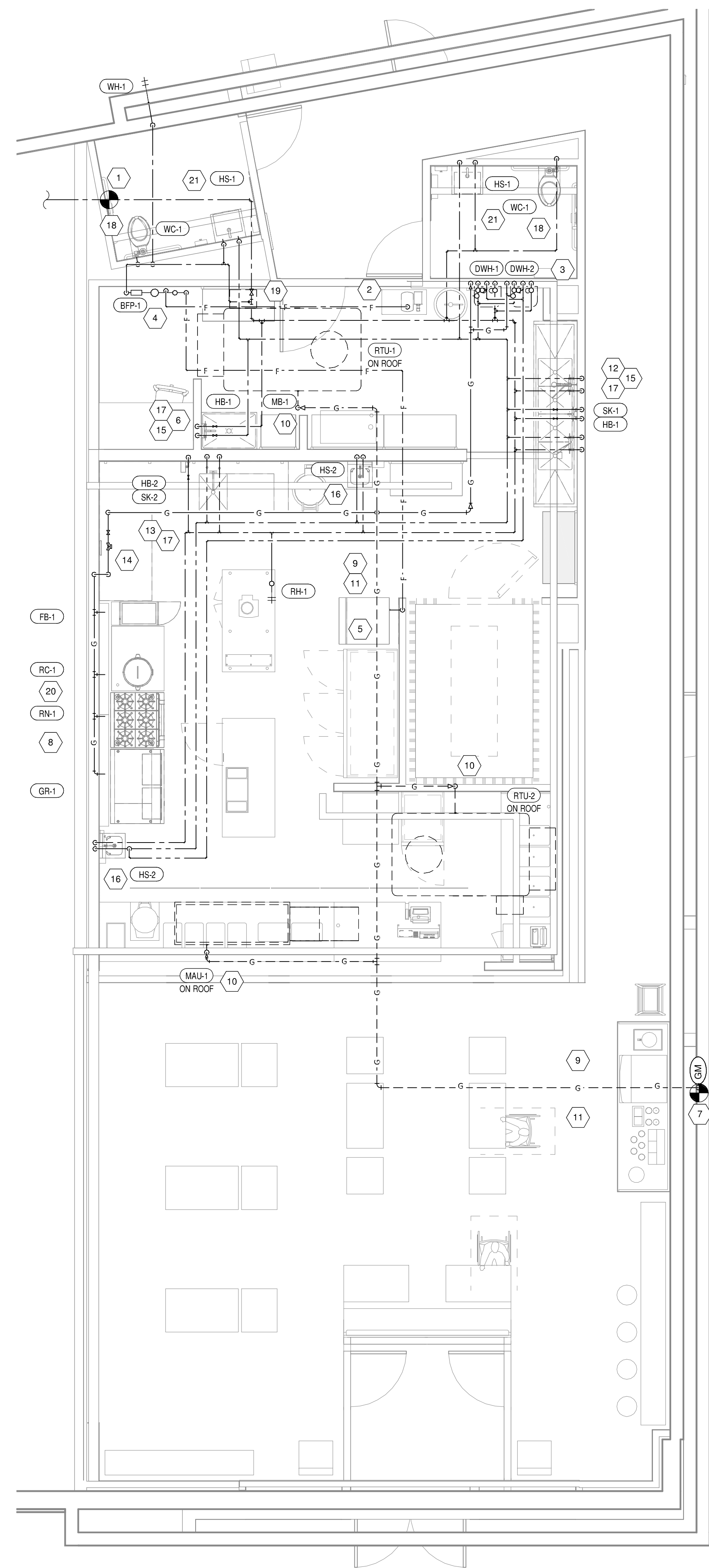
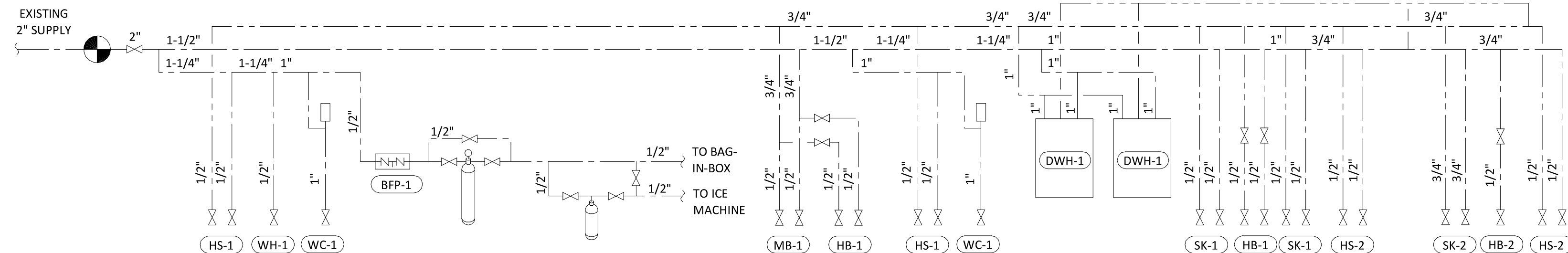
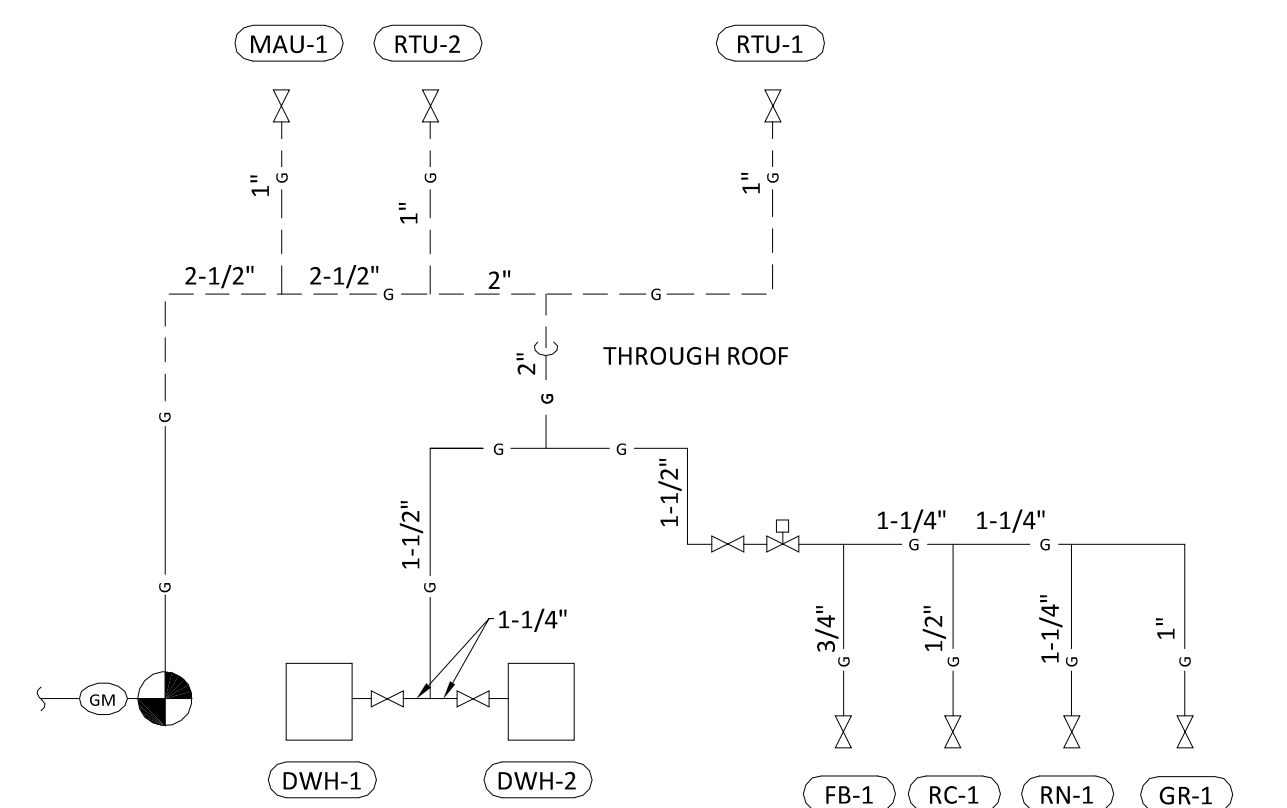
- NOTES:
1. PRESSURE REQUIRED AFTER METER: 7" W.C.
2. DISTANCES ARE APPROXIMATE

PLUMBING GENERAL NOTES

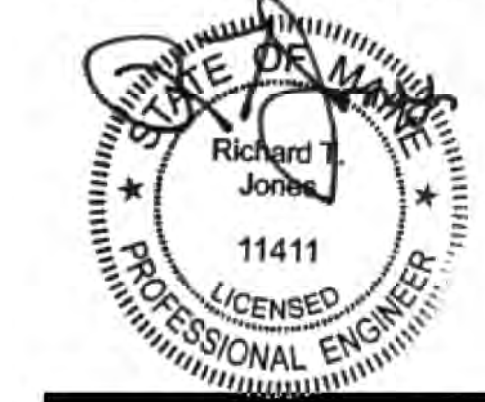
- GENERAL NOTES APPLY TO PLUMBING SHEETS.
- PLUMBING WORK SHALL BE DONE IN ACCORDANCE WITH THE PLUMBING CODE, LOCAL HEALTH DEPARTMENT STANDARDS, AND THE AUTHORITY HAVING JURISDICTION. SEE SHEET A000 FOR THE PREVAILING CODES.
- PIPING LAYOUTS ON DRAWINGS ARE SCHEMATIC. EXACT LOCATIONS ARE TO BE COORDINATED WITH THE EXISTING CONDITIONS AND THE WORK OF OTHER TRADES.
- CONCEAL PIPING UNLESS NOTED OTHERWISE. WATER SUPPLY PIPES SHALL BE INSTALLED LEVEL.
- PROVIDE SHUT-OFF VALVES FOR ISOLATION OF FIXTURE GROUPS AS SHOWN ON DRAWINGS IN ADDITION TO STOP VALVES AT EACH FIXTURE.
- PROVIDE STOP VALVES AT FIXTURES.
- PROVIDE TRAP PRIMERS FOR FLOOR DRAINS.
- WHERE THE WATER OR GAS SUPPLY LINE SIZE SHOWN IN THE PLUMBING DIAGRAMS DIFFERS FROM THE FIXTURE OR EQUIPMENT CONNECTION SIZE, PROVIDE LINE SIZE PIPE TO WITHIN 6" OF THE FIXTURE OR EQUIPMENT BEFORE TRANSITIONING TO THE CONNECTION SIZE.
- PIPING IN EXTERIOR WALLS SHALL BE INSTALLED BETWEEN THE INSULATION AND THE INTERIOR WALL FINISHING MATERIAL.
- INSULATE THE HOT AND COLD WATER, CONDENSATE DRAINAGE, AND STORM PIPING PER THE SPECIFICATIONS AND DETAIL 6/P300.
- PROVIDE GAS SHUT-OFF VALVES AT EACH PIECE OF EQUIPMENT. PROVIDE ACCESSIBLE DIRT LEG AT THE BOTTOM OF VERTICAL SECTIONS OF GAS PIPE AND AT THE CONNECTION TO EACH PIECE OF EQUIPMENT.
- PLUMBING FIXTURES, ACCESSORIES, AND MATERIALS PROVIDED FOR DOMESTIC WATER SHALL BE LEAD FREE.
- PRIOR TO TURNOVER PERFORM A VIDEO INSPECTION OF THE SANITARY AND GREASE LINES FROM THE MAIN LINES WITHIN THE TENANT SPACE TO THE MAIN SEWER TO VERIFY THAT THE SANITARY WASTE SYSTEM IS CONNECTED, CLEAN, AND FREE OF SAGS, BELLES, BREAKS, AND DEBRIS. DELIVER A REPORT AND COPY OF THE VIDEO TO THE TENANT'S CONSTRUCTION MANAGER PRIOR TO TURNOVER.
- THE TERM "FURNISH" MEANS SUPPLY AND DELIVER TO THE PROJECT SITE, READY FOR UNLOADING, UNPACKING, ASSEMBLY, INSTALLATION, AND SIMILAR OPERATIONS. THE TERM "INSTALL" DESCRIBES THE OPERATIONS AT THE PROJECT SITE INCLUDING THE ACTUAL UNLOADING, UNPACKING, ASSEMBLY, ERECTING, PLACING, ANCHORING, APPLYING, WORKING TO DIMENSION, FINISHING, CURING, PROTECTING, CLEANING, AND SIMILAR OPERATIONS. THE TERM "PROVIDE" MEANS TO FURNISH AND INSTALL, COMPLETE AND READY FOR THE INTENDED USE.
- PRIOR TO CONNECTION TO ANY EXISTING SEWER SYSTEM PERFORM A DIE TEST TO VERIFY THE TYPE OF SYSTEM AND THE DIRECTION OF FLOW. REPORT ANY DEVIATION FROM THE CONSTRUCTION DOCUMENTS TO THE TENANT'S CONSTRUCTION MANAGER.
- PROVIDE SANITARY AND GREASE WASTE PIPES AT A MINIMUM SLOPE OF 1/4" PER FOOT UNLESS NOTED OTHERWISE.

PLAN NOTES

- CONNECT TO THE EXISTING 2" DOMESTIC WATER SERVICE.
- PROVIDE 1/2" FILTERED WATER TO THE BAG-IN-BOX SODA CARBONATOR AT 102" AFF. SODA CARBONATOR SHALL HAVE AN INTEGRAL ASSE 1022-RATED CARBONATED BEVERAGE BACKFLOW PREVENTION DEVICE.
- PROVIDE WATER HEATER DWH-1 AND DWH-2 PER DETAIL 1/P300.
- PROVIDE WATER FILTERS MOUNTED TO WALL PER DETAIL 11/P300. PROVIDE 1/2" SUPPLY PIPES FROM FILTERS TO ICE MAKER AND SODA CARBONATOR AS SHOWN.
- PROVIDE 1/2" FILTERED WATER TO THE ICE MAKER AT 56" AFF. FINAL CONNECTION TO ICE MAKER SHALL BE A MINIMUM OF 1/2".
- PROVIDE DOMESTIC WATER ROUGH-INS FOR THE MOP BASIN FAUCET AT 36" AFF. PROVIDE DOMESTIC WATER ROUGH-INS FOR THE CHEMICAL DISPENSER FAUCET (HB-1) AT 64" AFF DIRECTLY ABOVE THE MOP BASIN FAUCET. SEE ARCHITECTURAL ELEVATION FOR DETAIL.
- CONNECT TO THE EXISTING GAS METER.
- PROVIDE GAS CONNECTIONS TO THE COOKING EQUIPMENT PER DETAIL 2/P300.
- SUPPORT THE GAS PIPE ON THE ROOF PER DETAIL 5/P300. WOOD BLOCKING IS NOT AN ACCEPTABLE METHOD OF SUPPORTING THE GAS PIPE.
- PROVIDE ACCESSIBLE LINE-SIZED GAS VALVE, DIRT LEG, AND UNION AT GAS CONNECTION TO THE EQUIPMENT.
- PAINT INTERIOR AND EXTERIOR EXPOSED GAS PIPING WITH ZINC CHROMATE PRIMER AND ONE FINAL COAT OF EXTERIOR ENAMEL. FINAL COLOR SHALL MATCH SURROUNDING FINISHES
- PROVIDE DOMESTIC WATER ROUGH-INS FOR THE CHEMICAL DISPENSER FAUCET (HB-1) AT 52" AFF. SEE ARCHITECTURAL ELEVATION FOR DETAIL.
- PROVIDE DOMESTIC WATER ROUGH-INS FOR THE VICTORY WASH DISPENSER FAUCET (HB-2) AT 52" AFF. SEE ARCHITECTURAL ELEVATION FOR DETAIL.
- PROVIDE KITCHEN EQUIPMENT GAS SHUTOFF 6" BELOW THE CEILING PER DETAIL 10/P300.
- CONNECT CHEMICAL DISPENSER TO HB-1. CHEMICAL DISPENSER HAS AN INTEGRAL AIR GAP AS IS SHOWN IN DETAIL 4/THIS SHEET.
- PROVIDE ASSE 1016/1070 POINT-OF-USE THERMOSTATIC MIXING VALVE, WATTS USG-B, ON WATER SUPPLY TO KITCHEN HAND SINKS. PROVIDE ANGLE STOP BELOW SINK, FASTEN MIXING VALVE TO WALL, AND MAKE FINAL CONNECTION FROM ANGLE STOPS TO MIXING VALVE AND FROM MIXING VALVE TO FAUCET USING BRAIDED STAINLESS STEEL HOSE. ADJUST MIXING VALVE FOR A DISCHARGE TEMPERATURE OF APPROXIMATELY 110° F.
- PROVIDE ACCESSIBLE VALVE IN WATER SUPPLY TO FIXTURE AS SHOWN.
- PROVIDE WATER HAMMER ARRESTOR ON WATER SUPPLY PIPE TO WATER CLOSET.
- PROVIDE AN ACCESSIBLE MAIN DOMESTIC WATER SHUTOFF VALVE ABOVE LAY-IN CEILING AS SHOWN. VALVE SHALL BE 12" ABOVE THE TOP OF THE LAY-IN CEILING. PERMANENTLY INSTALL THE "WATER SHUTOFF" SIGN TO THE CEILING GRID BELOW THE VALVE.
- PROVIDE GAS CONNECTION TO THE RICE COOKER PER DETAIL 9/P300.
- PROVIDE ROUGH-INS TO RESTROOM HAND SINKS AS SHOWN IN DETAIL 13/SHEET P300.



788 Morrison Road
Columbus, Ohio 43230
Phone: (614) 751-9610
Fax: (614) 552-5240
Contact: Andrew Janosik
(614) 328-2028
ajanosik@nationalengineering.com



COPYRIGHT 2015
THIS DRAWING IS AN INSTRUMENT OF SERVICE AND AS SUCH REMAINS THE PROPERTY OF CHIPOTLE MEXICAN GRILL, INC. PERMISSION FOR USE OF THIS DOCUMENT IS LIMITED AND CAN BE EXTENDED ONLY BY WRITTEN AGREEMENT WITH CHIPOTLE MEXICAN GRILL, INC.



STORE NO.: 2603
PORTLAND MARGINAL WAY
195 KENNEBEC ST
PORTLAND, ME 04101

Issue Record

DATE	DESCRIPTION
09/15/15	PERMIT/LANDLORD REVIEW

Revisions

NO.	DATE	DESCRIPTION
-----	------	-------------

Drawn: AJJ
Checked: RTJ
Project No.: 1401163

Contents:
Plumbing Plan Water & Gas

P100

Date of Last Print: 09/15/15