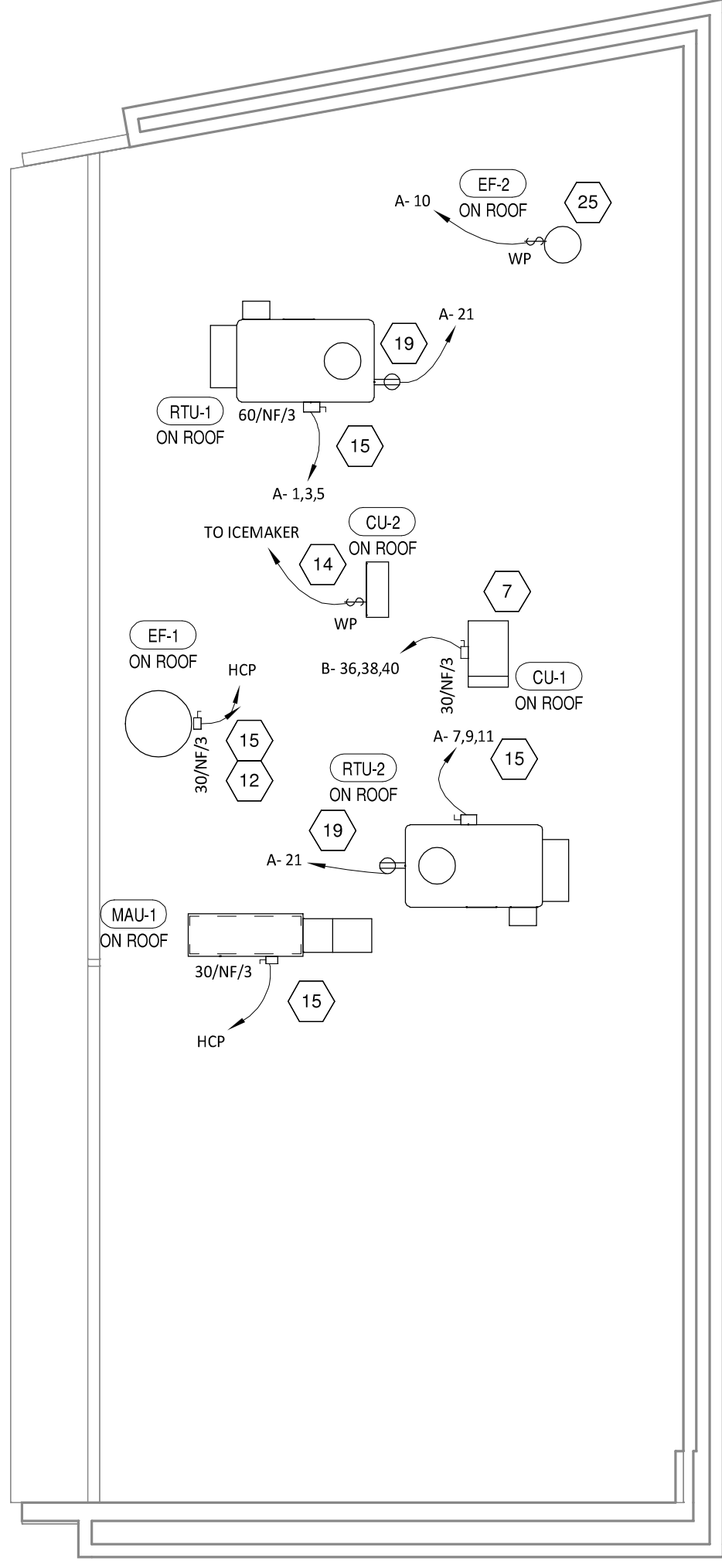
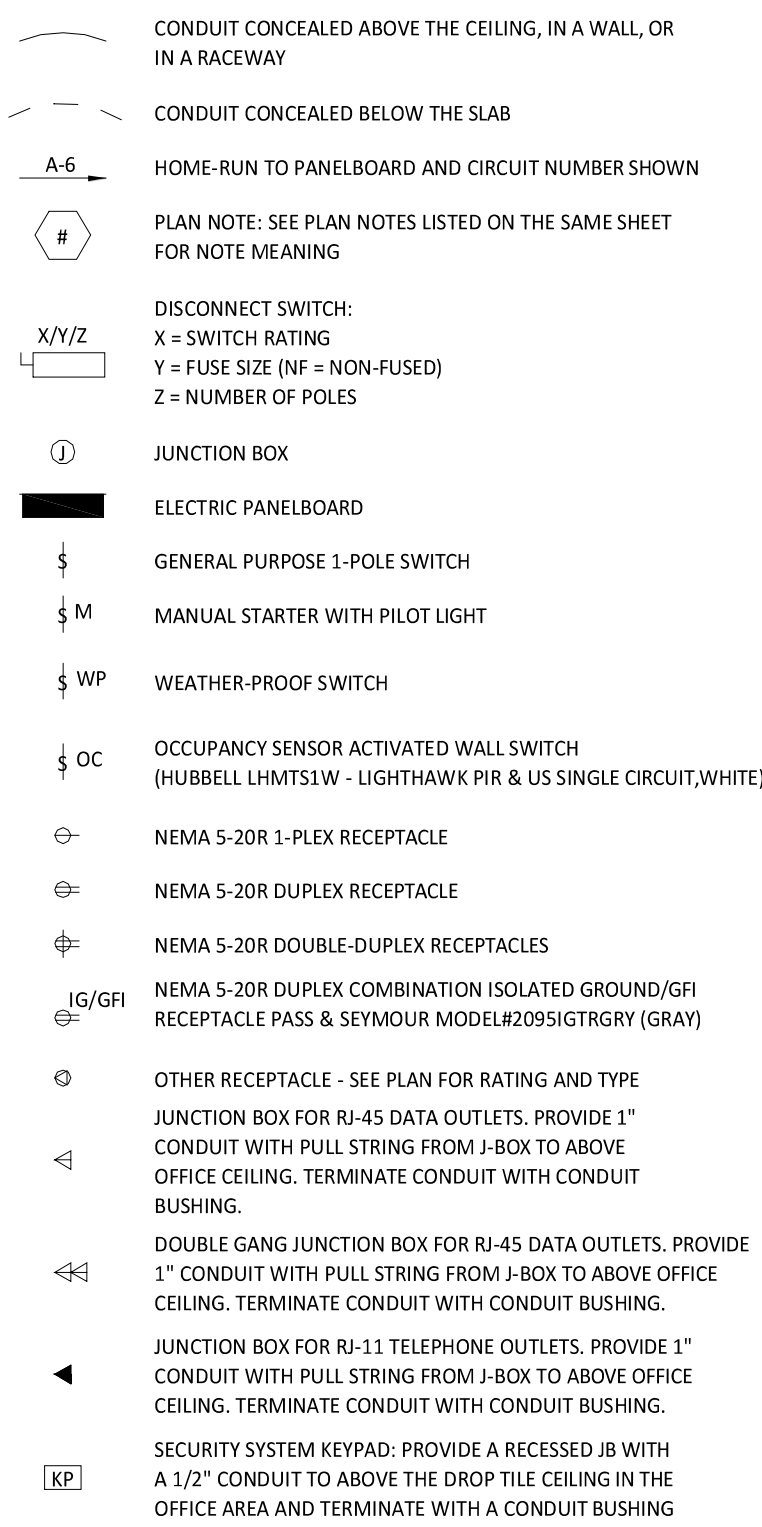
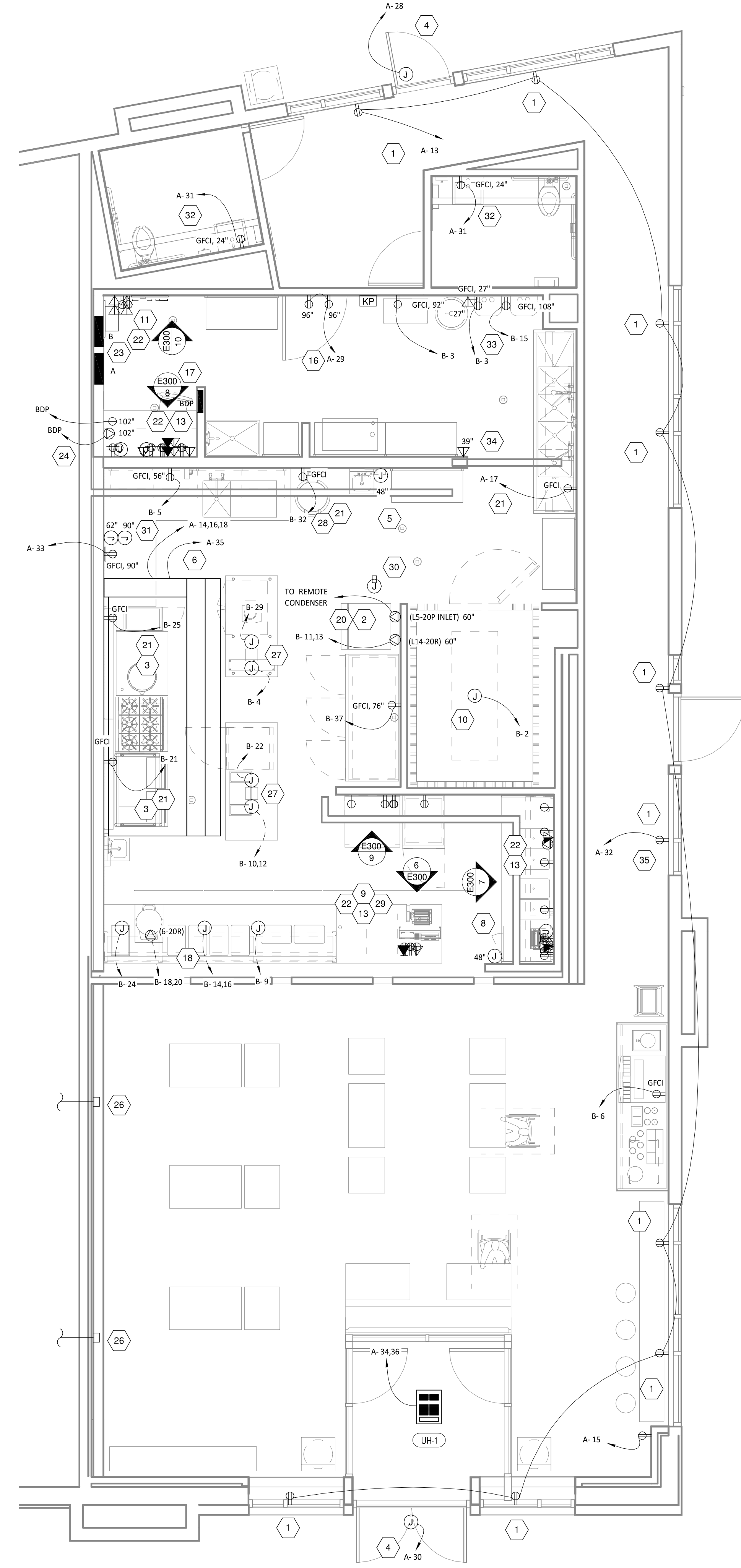


- # PLAN NOTES
- SHOW ROOM WINDOW RECEPTACLE. COORDINATE EXACT RECEPTACLE MOUNTING HEIGHT IN THE FIELD. LOCATION SHALL BE IN THE DRYWALL IMMEDIATELY ABOVE THE MAIN STORE-FRONT WINDOW.
 - ICE MACHINE ELECTRICAL TIE-IN. COORDINATE EXACT LOCATION WITH EQUIPMENT INSTALLER PRIOR TO ROUGH-IN. PROVIDE TWO PHASE CONDUCTORS, ONE NEUTRAL CONDUCTOR, AND ONE GROUND CONDUCTOR TO THE L14-20R RECEPTACLE. PROVIDE L5-20P FLANGED INLET WIRE TO THE REMOTE CONDENSER. PROVIDE 48" CORDS, ONE WITH L14-20P END AND ONE WITH L5-20R END, FROM ICE MAKER TO RECEPTACLE AND FLANGED INLET.
 - PROVIDE SHUNT TRIP CIRCUIT BREAKER FOR CIRCUITS SERVING EQUIPMENT BELOW THE KITCHEN HOOD. CONNECT SHUNT TRIP CIRCUIT BREAKER TO HOOD FIRE PROTECTION SYSTEM SO THAT RECEPTACLE IS DE-ENERGIZED UPON ACTIVATION OF HOOD FIRE PROTECTION SYSTEM.
 - JUNCTION BOX FOR EXTERIOR SIGN LIGHTING. COORDINATE EXACT LOCATION WITH CHIPOTLE'S CONSTRUCTION MANAGER AND THE SIGN INSTALLER PRIOR TO ROUGH-IN. CONNECT TO CIRCUIT SHOWN THROUGH THE EXTERIOR LIGHTING CONTACTOR PANEL AS SHOWN IN DETAIL 3/E300.
 - PROVIDE 4" OCTAGONAL JUNCTION BOX WITH SCREW THREADS SET AT THE 3 & 8 O'CLOCK POSITIONS FOR THE ANSUL PULL STATION. PROVIDE A 1/2" CONDUIT FROM THE J-BOX TO 6" ABOVE THE CEILING AND TERMINATE WITH A CONDUIT BUSHING. COORDINATE EXACT LOCATION WITH THE ANSUL SYSTEM INSTALLER AND THE FIRE MARSHALL PRIOR TO ROUGH-IN.
 - HOOD CONTROL PANEL AND ANSUL CABINET SHALL BE LOCATED WITHIN THE INTEGRAL HOOD UTILITY CABINET. PROVIDE FINAL ELECTRICAL CONNECTIONS PER THE MANUFACTURER'S INSTALLATION INSTRUCTIONS NECESSARY FOR A COMPLETE AND OPERATIONAL SYSTEM.
 - INSTALL WIRING HARNESS FURNISHED WITH WALK-IN COOLER FROM CONDENSING UNIT ON ROOF TO THE CAPSULE-PAK REFRIGERATION MODULE ON THE WALK-IN COOLER.
 - PROVIDE AN EMPTY SINGLE GANG J-BOX FOR VOLUME CONTROLS. INSTALL THE 22/2 VOLUME CONTROL WIRE FURNISHED BY THE OWNER FROM THE J-BOX TO THE AMPLIFIER IN THE OFFICE WITH 3 FEET OF SLACK AT EACH END.
 - COORDINATE DATA/POWER RECEPTACLE MOUNTING REQUIREMENTS WITH THE CASE WORK INSTALLER PRIOR TO ROUGH-IN.
 - CONNECT WALK-IN COOLER LIGHTS TO CIRCUIT SHOWN.
 - PROVIDE AN EMPTY 3/4" CONDUIT WITH PULL STRING FROM THE BASE BUILDING'S TELEPHONE SERVICE ENTRANCE LOCATION TO THE SPACE ABOVE THE OFFICE CEILING.
 - PROVIDE A SUITABLE LENGTH OF LIQUID-TIGHT CONDUIT TO THE EXHAUST FAN EF-1 TO ALLOW THE EXHAUST FAN TO HINGE COMPLETELY OPEN WHEN THE VIROGUARD SYSTEM IS INSTALLED.
 - AFTER THE FAX LINE, POS, AND OFFICE EQUIPMENT IS INSTALLED PROVIDE CHILDPROOF RECEPTACLE COVERS ON UNUSED IG RECEPTACLES AT THE FAX LINE, POS, AND OFFICE.
 - PROVIDE ONE PHASE, ONE NEUTRAL, AND ONE GROUND CONDUCTOR FROM THE ICE MAKER TO THE REMOTE CONDENSER CU-2.
 - UNIT SHALL HAVE AN INTEGRAL NON-FUSED DISCONNECT SWITCH.
 - PROVIDE DOOR CHIME AND BUZZER AT 96" AFF SEE ARCHITECTURAL DOOR EQUIPMENT FOR EQUIPMENT INFORMATION.
 - INSTALL THE BYPASS DISTRIBUTION PANEL (BDP) FURNISHED BY THE OWNER. INSTALL PER THE MANUFACTURER'S INSTALLATION INSTRUCTIONS AND DETAIL 4/E300.
 - ROUGH-INS TO SERVE LINE AND POS EQUIPMENT IS UNDERGROUND. COORDINATE ROUGH-IN REQUIREMENTS AND LOCATIONS WITH EQUIPMENT MANUFACTURER PRIOR TO ROUGH-IN.
 - ROOFTOP UNIT SHALL HAVE AN INTEGRAL UNIT-MOUNTED GFCI RECEPTACLE.
 - ICE MAKER RECEPTACLES SHALL BE CONCEALED BEHIND THE ICE MAKER. COORDINATE LOCATION WITH ACTUAL WIDTH OF ICE MAKER.
 - PROVIDE VERTICAL METAL DIE CAST WEATHERPROOF WHILE IN USE OUTLET COVER ON RECEPTACLES AT COOK LINE, AT SALAD SPINNER, AND UNDER FOUR-COMPARTMENT SINK. COVER SHALL BE INTERMATIC WP1010MXD FOR SINGLE GANG BOXES AND WP1030MXD FOR DOUBLE GANG BOXES. NO SUBSTITUTIONS SHALL BE ACCEPTED.
 - LABEL BATTERY-PROTECTED RECEPTACLES "BATTERY-PROTECTED; DISCONNECT AT PANEL BDP".
 - LABEL MAIN DISCONNECT SWITCH AND PANEL A "WARNING: BATTERY-PROTECTED RECEPTACLES IN USE. DISCONNECT AT PANEL BDP."
 - PROVIDE A NEMA 5-15P FLANGED INLET (LEVITON MODEL #5239) AND A SINGLE NEMA 5-20R RECEPTACLE IN OFFICE FOR CONNECTION TO THE CENTRAL UPS SYSTEM. CONNECT THE FLANGED INLET AND THE SINGLE RECEPTACLE TO THE TERMINAL BLOCK IN THE BDP PER THE MANUFACTURER'S INSTRUCTIONS. PROVIDE FINAL CONNECTION FROM FLANGED INLET TO THE OUTPUT OF THE UPS USING A 2'-LONG 20A EXTENSION CORD. PLUG THE UPS INTO THE SINGLE RECEPTACLE.
 - CONNECT EXHAUST FAN TO CIRCUIT SHOWN THROUGH THE DOUBLE-POLE SINGLE-THROW LIGHT SWITCH IN THE OFFICE.
 - INSTALL 16/2 SPEAKER WIRE FURNISHED BY OWNER FROM THE SPEAKER LOCATION TO THE AMPLIFIER IN THE OFFICE WITH 3 FEET OF SLACK AT EACH END. SEE ARCHITECTURAL PLANS FOR SPEAKER LOCATIONS.
 - PROVIDE POWER CONNECTIONS UNDER PREP TABLE INSTALLED IN A METALLIC PEDESTAL MOUNTED ON TOP OF A CURB PER DETAIL 5/E300. PROVIDE GFCI DUPLEX RECEPTACLES IN THREE J-BOXES INTEGRAL TO PREP TABLES (FOR UNDERCOUNTER REFRIGERATOR, HOT HOLDING CABINET, AND GENERAL RECEPTACLE). PROVIDE FINAL CONNECTION FROM PEDESTALS TO RECEPTACLES AND CARVING STATION USING LIQUIDTIGHT CONDUIT HELD TIGHT TO PREP TABLES.
 - PROVIDE PASS & SEYMOUR 2095GRY (GRAY) SPEC GRADE 20A DUPLEX GFCI RECEPTACLE FOR SALAD SPINNER.
 - PROVIDE 1" CONDUITS FROM LOW-VOLTAGE J-BOXES AT POS COUNTER CONCEALED WITHIN THE SERVE LINE WIRING CHASE TO THE WALL, THEN CONCEALED WITHIN THE WALL AND ABOVE THE CEILING TO ABOVE THE OFFICE CEILING.
 - PROVIDE J-BOX IN CEILING AS SHOWN. PROVIDE 1" CONDUIT FROM J-BOX TO ABOVE THE OFFICE CEILING. SEE ARCHITECTURAL RCP FOR EXACT LOCATION.
 - PROVIDE ROUGH-INS FOR LAUNCHPORT AS NOTED AND INSTALL LAUNCHPORT FURNISHED BY CHIPOTLE PER THE MANUFACTURER'S INSTALLATION INSTRUCTIONS WITH THE WALLSTATION AT 62" AFF AND THE WALL PLATE DIRECTLY ABOVE THE WALLSTATION AT 90" AFF. SEE ARCHITECTURAL DRAWINGS FOR HORIZONTAL LOCATION OF WALL PLATE AND WALLSTATION. PROVIDE SINGLE-GANG J-BOX AT 90" AFF FOR THE WALL PLATE INSTALLATION, A 4" X 2-1/8" DEEP OCTAGON J-BOX AT 62" AFF FOR THE WALLSTATION INSTALLATION, AND A 3/4" CONDUIT BETWEEN THE TWO J-BOXES. PROVIDE A 22 GAUGE CONDUCTOR CABLE BETWEEN THE WALLSTATION AND THE WALL PLATE J-BOXES WITH 6" SLACK AT EACH END. PROVIDE RECEPTACLE AT 90" AFF NEXT TO THE WALL PLATE J-BOX AS SHOWN. THE RECEPTACLE AND WALL PLATE AT 90" AFF SHALL BE CONCEALED FROM PUBLIC VIEW BY THE HOOD.
 - PROVIDE RECEPTACLE FOR RESTROOM HAND SINK FAUCET AS SHOWN IN DETAIL 13/SHEET P300.
 - PROVIDE GFCI RECEPTACLE AND DATA JACK AND INSTALL CO2 ALARM REMOTE DISPLAY UNIT FURNISHED BY CO2AS AS SHOWN IN DETAIL 11/E300.
 - PROVIDE DATA JACK AND INSTALL CO2 ALARM REMOTE DISPLAY UNIT FURNISHED BY CO2AS AS SHOWN IN DETAIL 11/E300.
 - RECEPTACLE FOR USE WITH INTERNALLY ILLUMINATED MEDALLION SIGN. CONNECT RECEPTACLE PER EXTERIOR SIGN LIGHTING DIAGRAM, DETAIL 3/E300

ELECTRICAL SYMBOLS



POWER ROOF PLAN
1/8" = 1'-0"



POWER FLOOR PLAN
1/4" = 1'-0"



788 Morrison Road
Columbus, Ohio 43230
Phone: (614) 751-9610
Fax: (614) 552-5240
Contact: Andrew Janosik
(614) 328-2028
ajanosik@nationalengineering.com



COPYRIGHT 2015
THIS DRAWING IS AN INSTRUMENT OF SERVICE AND AS SUCH REMAINS THE PROPERTY OF CHIPOTLE MEXICAN GRILL, INC. PERMISSION FOR USE OF THIS DOCUMENT IS LIMITED AND CAN BE EXTENDED ONLY BY WRITTEN AGREEMENT WITH CHIPOTLE MEXICAN GRILL, INC.



CHIPOTLE MEXICAN GRILL, INC.
1401 WYMKOOP STREET, SUITE 500
DENVER, CO 80202
TELEPHONE: (303) 555-4000
FAX: (303) 555-4014
INTERNET: WWW.CHIPOTLE.COM

STORE NO.: 2603
PORTLAND MARGINAL WAY
195 KENNEBEC ST
PORTLAND, ME 04101

Issue Record:	PERMIT/LANDLORD REVIEW
09/15/15	

Revisions:

Drawn: AJJ
Checked: RTJ
Project No.: 1401163

Contents:
Electrical Power Plan

E110
Date of Last Print: 09/15/15