

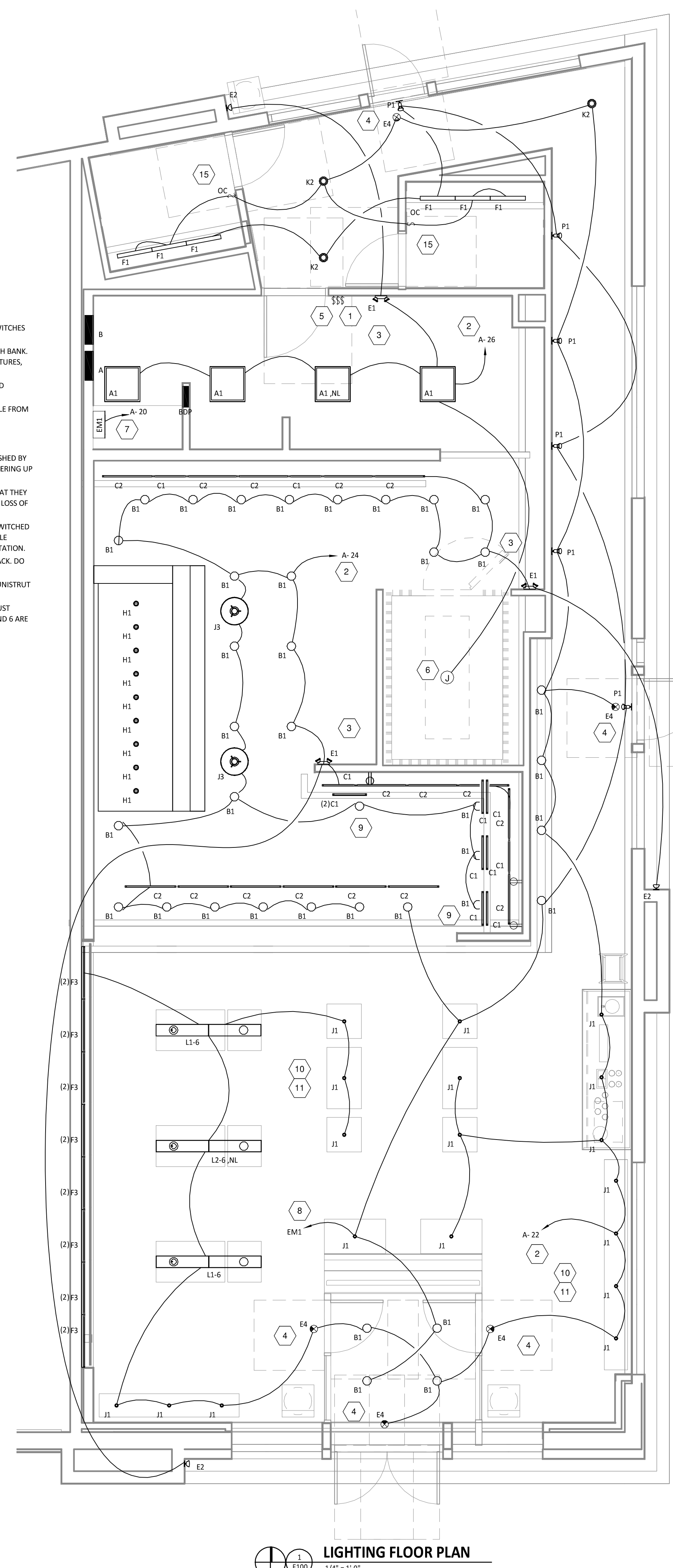
ABBREVIATIONS	
AFF	ABOVE FINISHED FLOOR
AFG	ABOVE FINISHED GRADE
C	CONDUIT
G	GROUND
GFCI	GROUND FAULT CIRCUIT INTERRUPT
IG	ISOLATED GROUND
JB	JUNCTION BOX
NL	NIGHT LIGHT
S	SURFACE MOUNTED
WP	WEATHERPROOF
CO2AS	TENANT'S CO2 ALARM SUPPLIER
GC	GENERAL CONTRACTOR
HES	TENANT'S HVAC EQUIPMENT SUPPLIER
TAB	TENANT'S TEST AND BALANCE VENDOR
TCC	TENANT'S CABLING CONTRACTOR
KES	TENANT'S KITCHEN EQUIPMENT SUPPLIER
HS	TENANT'S HOOD SUPPLIER
TL	TENANT'S LIGHT/LAMP SUPPLIER
TMB	TENANT'S MENU BOARD SUPPLIER
TMS	TENANT'S MILLWORK SUPPLIER
TP	TENANT'S PHONE SUPPLIER
TRS	TENANT'S RAILING SUPPLIER
TSV	TENANT'S SIGN VENDOR
WCS	TENANT'S WALK-IN COOLER SUPPLIER

MATERIAL SCHEDULE		
CATEGORY	APPLICATION	ALLOWABLE MATERIAL
CONDUCTORS	#10 AWG AND SMALLER	SOLID CU, TYPE THHN/THWN OR XHHW
	#8 AWG AND LARGER	STRANDED CU, TYPE THHN/THWN OR XHHW
CONDUITS	OUTDOOR, EXPOSED OR CONCEALED	INTERMEDIATE METAL CONDUIT
	OUTDOOR OR INDOOR DAMP LOCATIONS, CONNECTION TO VIBRATING EQUIPMENT	LIQUIDTIGHT FLEXIBLE METAL CONDUIT
	INDOOR, EXPOSED	ELECTRICAL METALLIC TUBING U.N.O.
	INDOOR, WITHIN 1-1/2' OF ROOF DECK	INTERMEDIATE METAL CONDUIT
	INDOOR, CONCEALED	ELECTRICAL METALLIC TUBING, FLEXIBLE METAL CONDUIT, OR METAL CLAD CABLE
	INDOOR DRY LOCATIONS, CONNECTION TO VIBRATING EQUIPMENT	FLEXIBLE METAL CONDUIT
WIRING DEVICES	LOW VOLTAGE, INDOOR, ABOVE GRADE	ELECTRICAL METALLIC TUBING
	LOW VOLTAGE, BELOW GRADE	RIGID NONMETALLIC CONDUIT (SCHEDULE 40 PVC)
	IN KITCHEN, OFFICE, OR NON-PUBLIC SPACES	GRAY DEVICE WITH STAINLESS STEEL COVER PLATE
	IG OR IG/GFI RECEPTACLES	GRAY DEVICE WITH STAINLESS STEEL COVER PLATE
	ON DRYWALL IN DINING ROOM	WHITE DEVICE WITH WHITE COVER PLATE
ON PLYWOOD, HOT ROLLED STEEL, OR RICHLITE	BLACK DEVICE WITH BLACK COVER PLATE	
IN RESTROOMS	WHITE DEVICE WITH WHITE COVER PLATE	

- ELECTRICAL GENERAL NOTES**
- A GENERAL NOTES APPLY TO ELECTRICAL SHEETS.
 - B ELECTRICAL WORK SHALL BE DONE IN ACCORDANCE WITH THE ELECTRICAL CODE AND IN ACCORDANCE WITH THE AUTHORITY HAVING JURISDICTION. SEE SHEET A000 FOR THE PREVALING CODES.
 - C WIRING SHALL BE (2)#12, #12 G IN 3/4" C UNLESS NOTED OTHERWISE.
 - D INDIVIDUAL CONDUIT HOME RUNS SHOWN SHALL NOT BE CONSOLIDATED.
 - E CIRCUIT EMERGENCY EGRESS LIGHTS, ILLUMINATED EXIT SIGNS, AND NIGHT LIGHTS AHEAD OF LOCAL SWITCHING.
 - F INSTALL WALL SWITCHES AT 48" AFF TO CENTER OF SWITCH AND RECEPTACES AT 18" AFF TO CENTER OF RECEPTACLE UNLESS NOTED OTHERWISE.
 - G INSTALL CONDUIT CONCEALED ABOVE THE CEILING, IN WALLS, OR IN RACEWAYS.
 - H PROVIDE 1" CONDUIT WITH PULL STRING FROM EACH J-BOX FOR TELEPHONE OR DATA JACKS TO ABOVE OFFICE CEILING. SEE MATERIAL SCHEDULE FOR ALLOWABLE CONDUIT MATERIALS. PROVIDE CONDUITS WITH MINIMAL ELBOWS AND TERMINATE CONDUITS ABOVE OFFICE CEILING WITH CONDUIT BUSHING.
 - I THE TERM "FURNISH" MEANS SUPPLY AND DELIVER TO THE PROJECT SITE, READY FOR UNLOADING, UNPACKING, ASSEMBLY, INSTALLATION, AND SIMILAR OPERATIONS. THE TERM "INSTALL" DESCRIBES THE OPERATIONS AT THE PROJECT SITE INCLUDING THE ACTUAL UNLOADING, UNPACKING, ASSEMBLY, ERRECTING, PLACING, ANCHORING, APPLYING, WORKING TO DIMENSION, FINISHING, CURING, PROTECTING, CLEANING, AND SIMILAR OPERATIONS. THE TERM "PROVIDE" MEANS TO FURNISH AND INSTALL, COMPLETE AND READY FOR THE INTENDED USE.
 - J DIMENSIONS SHOWN IN ELECTRICAL ELEVATIONS ARE FROM THE WALL FRAMING UNLESS NOTED OTHERWISE.

- PLAN NOTES**
- 1 STORE LIGHTING SWITCH BANK. PROVIDE ONE SWITCH PER LIGHTING CIRCUIT. LABEL SWITCHES WITH AREA SERVED.
 - 2 CONNECT LIGHTING CIRCUIT TO CIRCUIT SHOWN THROUGH THE STORE LIGHTING SWITCH BANK. PROVIDE ONE UNSWITCHED CONDUCTOR FOR CONNECTION TO LOCALLY SWITCHED FIXTURES, FIXTURES DESIGNATED AS NIGHT LIGHTS, EXIT SIGNS, AND EMERGENCY FIXTURES.
 - 3 WALL MOUNT THE EMERGENCY LIGHT FIXTURE AT 6" BELOW THE CEILING UNLESS NOTED OTHERWISE
 - 4 VERIFY MOUNTING HEIGHT OF EXIT SIGN PRIOR TO ROUGH IN. EXIT SIGN MUST BE VISIBLE FROM AREA SERVED AFTER BUILDING SYSTEMS HAVE BEEN INSTALLED.
 - 5 USE DINING ROOM SWITCH FOR CONTROL OF RESTROOM EXHAUST FAN.
 - 6 INSTALL LIGHT FIXTURES FURNISHED WITH THE WALK-IN COOLER
 - 7 INSTALL DUAL-LITE LG25 EMERGENCY LIGHTING MINI INVERTERS, EM1 AND EM2, FURNISHED BY OWNER ON WALL. CONNECT TO CIRCUIT SHOWN. INVERTER SHALL BE CAPABLE OF POWERING UP TO 250W OF FLUORESCENT LIGHT FIXTURES AT 100% LIGHT OUTPUT FOR 90 MINUTES.
 - 8 CONNECT LIGHTS TO EMERGENCY LIGHTING INVERTER SHOWN. CONNECT LIGHTS SO THAT THEY OPERATE 24 HOURS PER DAY AS NIGHT LIGHTS AND ALSO STAY ILLUMINATED DURING A LOSS OF POWER AS EMERGENCY LIGHTS.
 - 9 PROVIDE (2) GFCI RECEPTACLES FOR UNDER-SHELF LIGHTING AS SHOWN. CONNECT TO SWITCHED LEG OF THE KITCHEN LIGHTING CIRCUIT. SEE ELEVATIONS ON SHEET E300 FOR RECEPTACLE LOCATIONS, HEIGHTS, AND CIRCUITING. INSTALL RECEPTACLES IN A HORIZONTAL ORIENTATION.
 - 10 INSTALL HANGING LIGHT FIXTURES WITH LOOSE CORD SO THAT CORD HAS 6"-12" OF SLACK. DO NOT SECURE CORD TO HANGING ROD. TYPICAL.
 - 11 PROVIDE UNISTRUT AS SHOWN ON THE ARCHITECTURAL RCP PER THE ARCHITECTURAL UNISTRUT DETAIL. TYPICAL.
 - 15 INSTALL WALL MOUNTED OCCUPANCY SENSOR FURNISHED BY LIGHTING SUPPLIER. ADJUST SETTINGS SWITCHES SO THAT SWITCHES 1, 2, 3, 7, AND 8 ARE UP AND SWITCHES 4, 5, AND 6 ARE DOWN.

- ELECTRICAL SYMBOLS**
- - - CONDUIT CONCEALED ABOVE THE CEILING, IN A WALL, OR IN A RACEWAY
 - - - CONDUIT CONCEALED BELOW THE SLAB
 - HOME-RUN TO PANELBOARD AND CIRCUIT NUMBER SHOWN
 - # PLAN NOTE: SEE PLAN NOTES LISTED ON THE SAME SHEET FOR NOTE MEANING
 - X/Y/Z DISCONNECT SWITCH:
X = SWITCH RATING
Y = FUSE SIZE (NF = NON-FUSED)
Z = NUMBER OF POLES
 - JB JUNCTION BOX
 - EPB ELECTRIC PANELBOARD
 - 1 GENERAL PURPOSE 1-POLE SWITCH
 - M MANUAL STARTER WITH PILOT LIGHT
 - OC OCCUPANCY SENSOR ACTIVATED WALL SWITCH (HURBELL LHMTS1-V - LIGHTHAWK PIR & US SINGLE CIRCUIT, WHITE)
 - 20 NEMA 5-20R DUPLEX RECEPTACLE

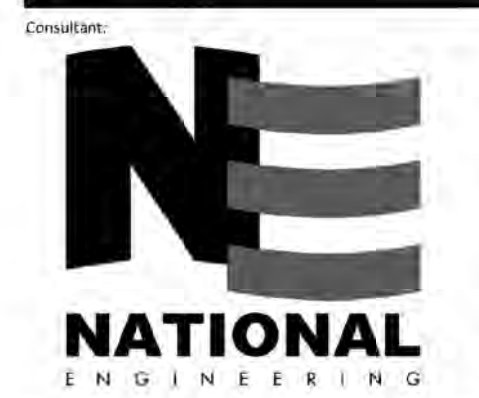


LIGHTING FIXTURE SCHEDULE											
TAG	QUANTITY	TYPE	MOUNT	FURNISHED BY	INSTALLED BY	MANUFACTURER	MODEL	LAMP(S)	VOLTS	WATTS	SPECIAL REQUIREMENTS
A1	4	2x2 LENSED TROFFER	LAY-IN	TL	GC	CRESCENT	22GP17FSA18L4K3	(4) F017/830/ECO	120	68	
B1	38	RECESSED 6IN CAN LIGHT	CEILING	TL	GC	NORA LIGHTING	NHIC-6G24ATFL with NTM-57W/M1 Trim	(1) 17W ECOSTORY ECO-PAR38C-17-GU24-27K-25D LED (25"-2700K) W/ GU 24 BASE	120	17	
C1	12	LOW PROFILE FLUORESCENT 2FT	SURFACE	TL	GC	HERA	ES22W/B	(1) FP14/830/ECO (INCLUDED)	120	14	FURNISHED WITH COVERS, (1) HARDWARE BOX, AND CONNECTORS, OR CORD & PLUG
C2	16	LOW PROFILE FLUORESCENT 3FT	SURFACE	TL	GC	HERA	ES34W/B	(1) FP21/830/ECO (INCLUDED)	120	21	FURNISHED WITH COVERS, (1) HARDWARE BOX, AND CONNECTORS, OR CORD & PLUG
E1	3	EMERGENCY LIGHT - DUAL HEAD	VARIOUS	TL	GC	EXITRONIX	LED-90	(2) SPECIAL LED	120	2	90 MINUTE BATTERY BACKUP
E2	3	EXTERIOR REMOTE EMERGENCY LIGHT	VARIOUS	TL	GC	EXITRONIX	HLED-BL-WP WITH PMC-B-1 MOUNTING PLATE	(1) SPECIAL LED	4	1	LOW VOLTAGE REMOTE EMERGENCY LIGHT POWERED BY FIXTURE E1
E4	5	WHITE EXIT LIGHT - STANDARD RED LETTERS	VARIOUS	TL	GC	EXITRONIX	VEX-BP-WB-WH	(1) SPECIAL LED	120	4	90 MINUTE BATTERY BACKUP, FURNISHED WITH WALL MOUNT
F1	6	2' T8 FLUORESCENT FIXTURE	SURFACE	TL	GC	CRESCENT	C117BK1Y	(1) F017/830/ECO	120	17	
F3	16	3' T5 FLUORESCENT FIXTURE	SURFACE	TL	GC	BARTCO	BFL281-21-UNV	(1) FP21/830/ECO	120	21	
H1	9	HOOD LIGHT	SURFACE	THS/TL	GC	YAPOR PROOF LIGHT FIXTURE FURNISHED WITH HOOD		(1) CF23EL/MINI/827	120	23	INSTALL LAMP FURNISHED SEPARATELY BY LIGHTING SUPPLIER
J1	18	PENDANT LIGHT - ADJUSTABLE HEIGHT - PAR 20	CEILING	TL	GC	KAMMETAL	C-LP1-01	(1) 7W ECOSTORY PAR20 LED (50"-2750K) W/ GU 10 BASE	120	7	SEE ARCHITECTURAL RCP FOR STEM LENGTH
J3	2	PENDANT DOME LIGHT - ADJUSTABLE HEIGHT - PAR20	CEILING	TL	GC	HI-LITE MFG. CO.	H-CW1600-2	(1) 32W CFL (2700K) W/ GU 24 BASE	120	32	WITH JELLY JAR. SEE ARCHITECTURAL RCP FOR STEM LENGTH
K2	3	DOWN LIGHT	CEILING	TL	GC	LUMOS	MS-4018-B-2009094-F7	(1) 12W ECOSTORY PAR30 LED (30"-2750K) W/ GU 24 BASE	120	12	
L1-6	2	LONG LIGHT - 6 TOP - PAR 20	SUSPENDED	TMS/TL	GC	KAMMETAL	C-L11-06	(4) FP21/830/ECO, (1) FP28/830/ECO (4) 7W ECOSTORY PAR20 LED (50"-2750K) W/ GU 10 BASE	120	112	(4) FP21/830/ECO, (1) FP28/830/ECO (4) 7W ECOSTORY PAR20 LED (50"-2750K) W/ GU 10 BASE
L2-6	1	LONG LIGHT - 6 TOP - PAR 20 - W/ EM BALLAST	SUSPENDED	TMS/TL	GC	KAMMETAL	C-L11-06-EM	(4) FP21/830/ECO, (1) FP28/830/ECO (4) 7W ECOSTORY PAR20 LED (50"-2750K) W/ GU 10 BASE	120	112	WITH DUAL CIRCUIT SWITCHING, EM BALLASTS, 223-TS-XX COLORED FLUOR. SLEEVES
P1	6	ACCENT LIGHT - SWIVEL SPOT LIGHT - SINGLE HEAD	CEILING	TL	GC	LUMOS	MS-4020-B-2010035-F1 w/ (1) MS-4042-A	(1) 12W ECOSTORY PAR30 LED (30"-2750K) W/ GU 24 BASE	120	12	

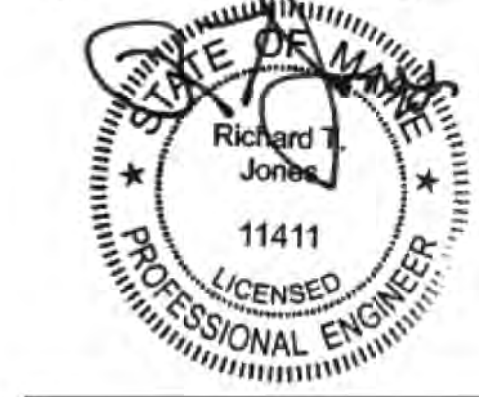
LIGHTING FIXTURE SCHEDULE NOTES

- A. FLUORESCENT LAMPS NOT INCLUDED WITH THE FIXTURE ARE TO BE MANUFACTURED BY SYLVANIA UNLESS OTHERWISE NOTED. PHILIPS FLUORESCENT LAMPS WILL BE AN ACCEPTABLE ALTERNATE.
- B. SEE THE ARCHITECTURAL REFLECTED CEILING PLAN FOR EXACT LIGHT LOCATIONS.
- C. SEE THE ARCHITECTURAL LIGHTING DETAILS FOR FIXTURE CONSTRUCTION DETAILS.

LIGHTING FLOOR PLAN
1/4" = 1'-0"



788 Morrison Road
Columbus, Ohio 43230
Phone: (614) 751-9610
Fax: (614) 552-5240
Contact: Andrew Janosik
(614) 328-2028
ajanosik@nationalengineering.com



COPYRIGHT 2015
THIS DRAWING IS AN INSTRUMENT OF SERVICE AND AS SUCH REMAINS THE PROPERTY OF CHIPOTLE MEXICAN GRILL, INC. PERMISSION FOR USE OF THIS DOCUMENT IS LIMITED AND CAN BE EXTENDED ONLY BY WRITTEN AGREEMENT WITH CHIPOTLE MEXICAN GRILL, INC.



CHIPOTLE MEXICAN GRILL, INC.
1401 WYMKOP STREET, SUITE 500
DENVER, COLORADO 80202
TELEPHONE: (303) 595-4000
FAX: (303) 595-4014
INTERNET: WWW.CHIPOTLE.COM

STORE NO.: 2603
PORTLAND MARGINAL WAY
195 KENNEBEC ST
PORTLAND, ME 04101

Issue Record:
09/15/15 PERMIT/LANDLORD REVIEW

Revisions:

Drawn: Checked:
AJJ RTJ

Project No.:
1401163

Contents:

Electrical Lighting Plan

E100

Date of Last Print:
09/15/15