

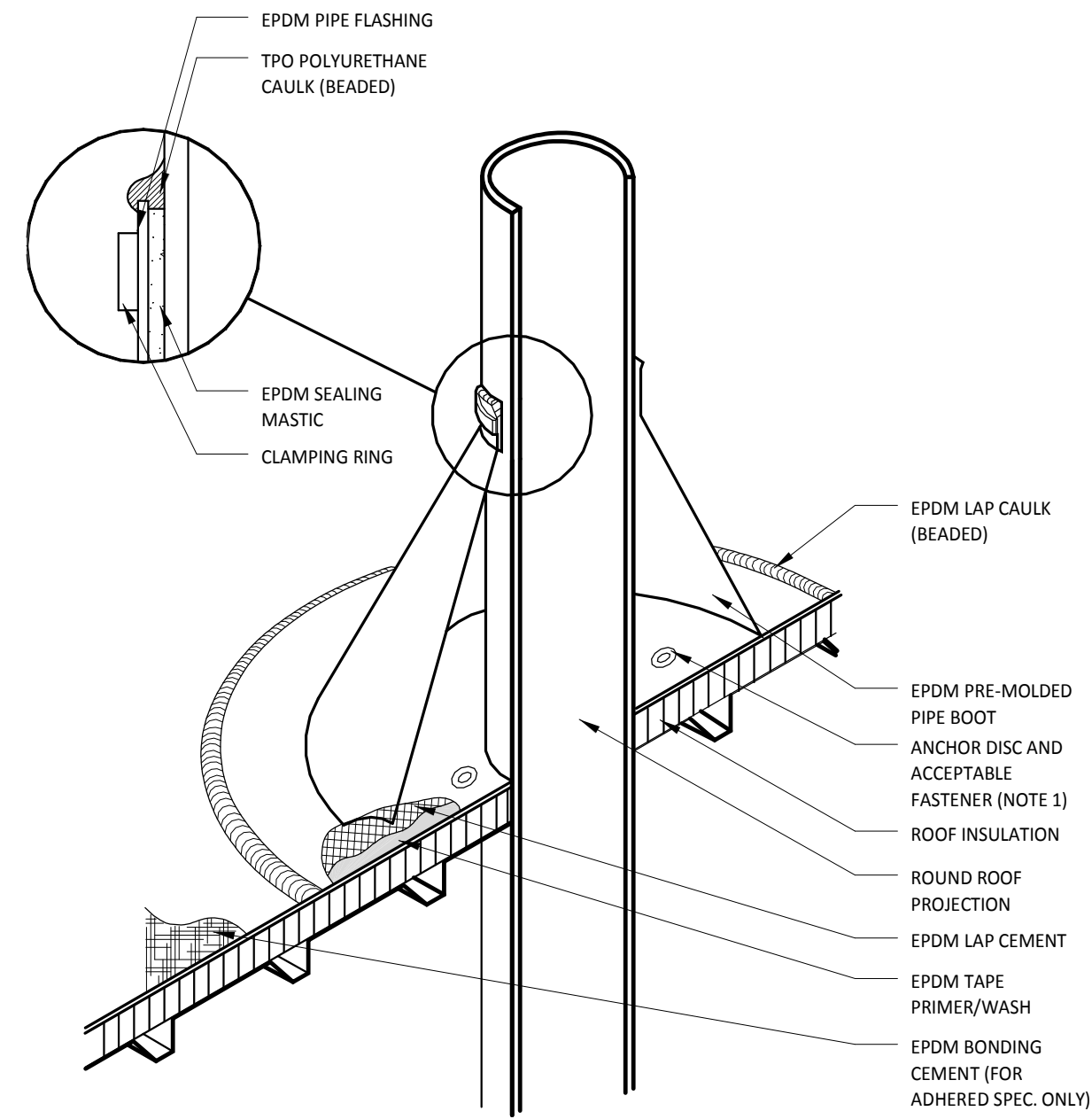
HVAC EQUIPMENT

| DESCRIPTION | SUPPLIED BY | INSTALLED BY | UTILITY | | | | REMARKS |
|--------------------------|-------------|--------------|---------|-----|-------|-------|--|
| | | | ELEC | GAS | WATER | SEWER | |
| Exhaust Fans & Curbs | RTU/HS | GC | • | | | | Curb provided by HS, installed by GC |
| Make Up Air Unit & Curbs | HS | GC | • | • | • | • | Curb provided by Trane, installed by GC |
| Roof Top Units & Curbs | RTU | GC | • | • | • | • | Curb provided by Trane, installed by GC |
| Test & Balance System | TB | - | | | | | Provide HVAC Test & Balance per Tenant's National Account Program. |

GENERAL NOTES

- SEE STRUCTURAL DRAWINGS FOR LOCATIONS AND SIZE OF STRUCTURAL ROOF REINFORCEMENTS.
- SEE MECHANICAL PLANS FOR ROOF TOP EQUIPMENT.
- COORDINATE ALL ROOF PENETRATIONS, FLASHING, AND REPAIR W/ CHIPOTLE CONSTRUCTION MANAGER PRIOR TO COMMENCEMENT OF WORK.
- DIMENSIONS ARE TO THE CENTER OF THE PENETRATION AND ARE FOR REFERENCE ONLY. ROOFING CONTRACTOR TO ADJUST AS NECESSARY IN FIELD. CONTACT ENGINEERING CONSULTANTS FOR ANY MAJOR MODIFICATIONS TO LAYOUT.
- JOISTS FOR SHELL BUILDING WERE DESIGNED FOR THE RTU WEIGHTS AND PLACEMENT EXHIBITED. IF LOCATION OR ORIENTATION OF A UNIT MUST CHANGE, NOTIFY ARCHITECT IMMEDIATELY.
- SEE M300 FOR PENETRATION DETAILS AT RTUS AND THE EXHAUST FAN.
- PROVIDE INSULATED CURBS FOR ALL EQUIPMENT IN EXPOSED DECK AREA ONLY.

NOTE: UTILITIES BY GC, REFER TO MECHANICAL DRAWINGS.

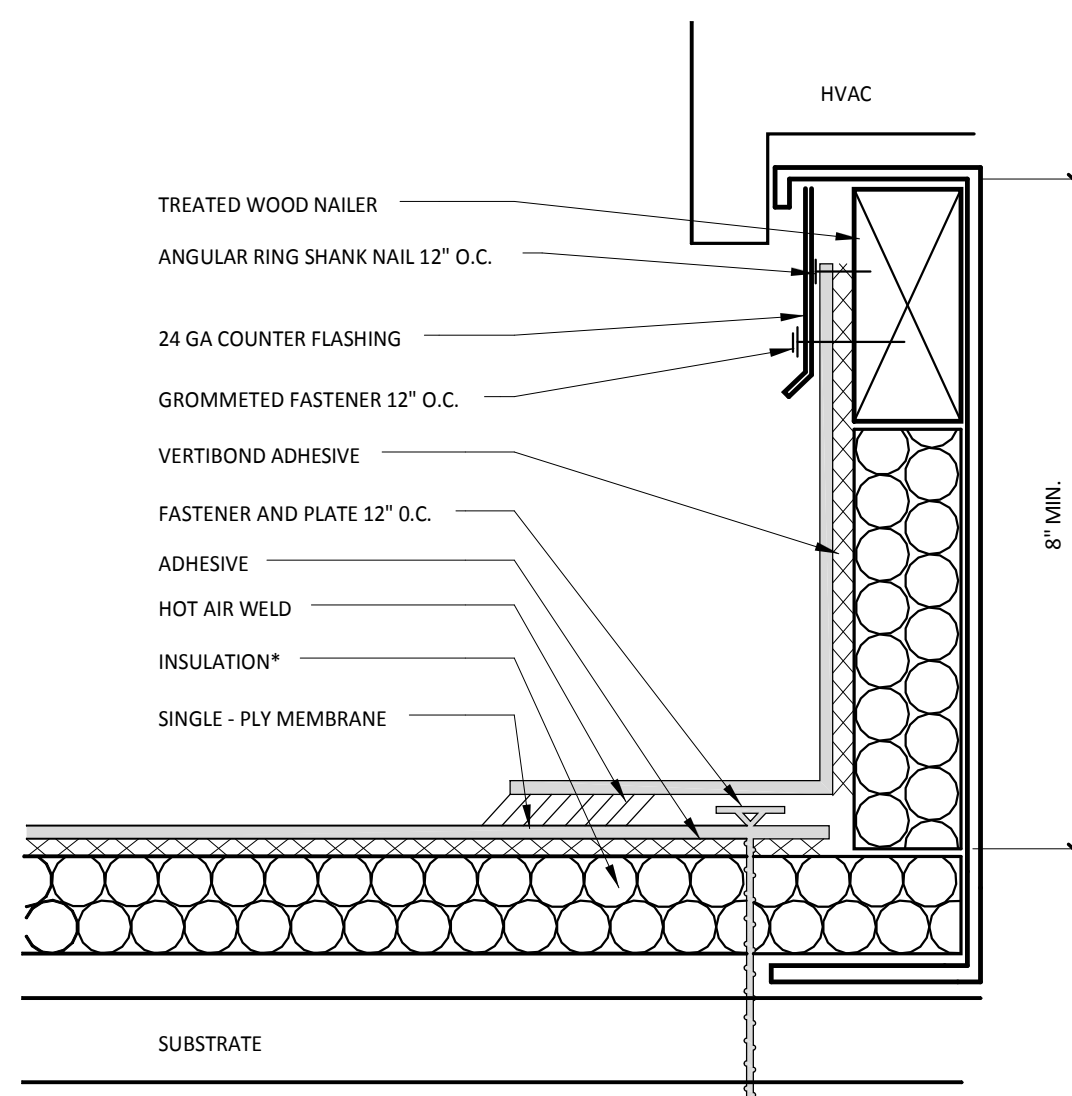


NOTE:

- WITH MECHANICALLY FASTENED OR BALLASTED SPECIFICATIONS, MEMBRANE MUST BE MECHANICALLY ATTACHED WITH 2" (50 mm) ANCHOR DISC AND ACCEPTABLE FASTENERS (MINIMUM OF 4 PER PIPE).
- DO NOT OVERLAP THE FLANGES FROM ADJACENT PIPE FLASHINGS.
- ANY SEAM UNDER BOOT FLANGE TO BE TREATED AS T-JOINT.
- BOTH SURFACES TO BE MATED MUST BE CLEANED WITH TAPE PRIMER/WASH. EPDM TAPE PRIMER/WASH MUST BE COMPLETELY DRY AND TACK FREE BEFORE APPLYING EPDM LAP CEMENT.

2 BOOT DETAIL

1/2" = 1'-0"

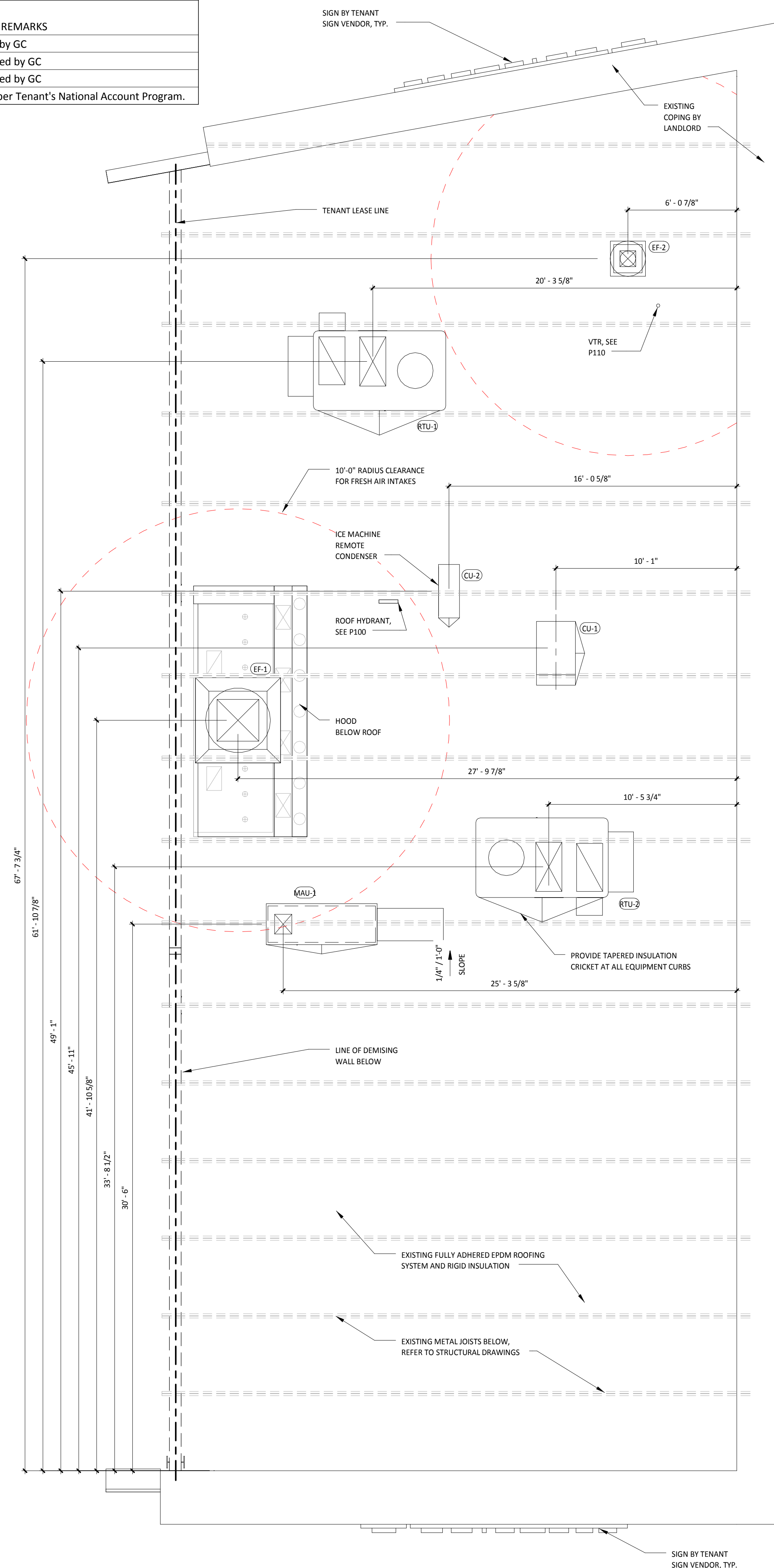


NOTES:

- INSTALLATION TO BE COMPLETED IN ACCORDANCE WITH MANUFACTURERS SPECIFICATIONS.
- DO NOT SCALE DRAWINGS.
- USE PREFABRICATED OUTSIDE CORNERS.
- INSULATION MUST BE SECURELY FASTENED.
- *GLASS - FACED POLYISO INSULATION IS OPTIONAL AND MAY NOT BE REQUIRED ON EVERY PROJECT. IF INSULATION IS NOT REQUIRED, THE MEMBRANE MUST BE ADHERED TO AN APPROVED SURFACE.

3 CURB FLASHING

1/2" = 1'-0"



1 ROOF PLAN

1/4" = 1'-0"

Consultant:

r e d

architecture + planning

855 GRANDVIEW AVENUE
SUITE 295
COLUMBUS, OHIO 43215
PHONE: 614.487.8770
FAX: 614.487.8777



COPYRIGHT 2015
THIS DRAWING IS AN INSTRUMENT OF SERVICE AND AS SUCH REMAINS THE PROPERTY OF CHIPOTLE MEXICAN GRILL, INC. PERMISSION FOR USE OF THIS DOCUMENT IS LIMITED AND CAN BE EXTENDED ONLY BY WRITTEN AGREEMENT WITH CHIPOTLE MEXICAN GRILL, INC.



CHIPOTLE MEXICAN GRILL, INC.
1401 WYNKOOP STREET, SUITE 500
DENVER, COLORADO 80202
TELEPHONE: (303) 595-4000
FAX: (303) 595-4014
INTERNET: WWW.CHIPOTLE.COM

STORE NO.: 2603
PORTLAND MARGINAL WAY
195 KENNEBEC ST
PORTLAND, ME 04101

Issue Record:
09/15/15 PERMIT/LANDLORD REVIEW

Revisions:

Drawn: TC, BP, DP
Checked: KH, TC

Project No:
CMG507

Contents:

Architectural Roof Plan

A150

Date of Last Print:
09/15/15