

# RCP SCHEDULE

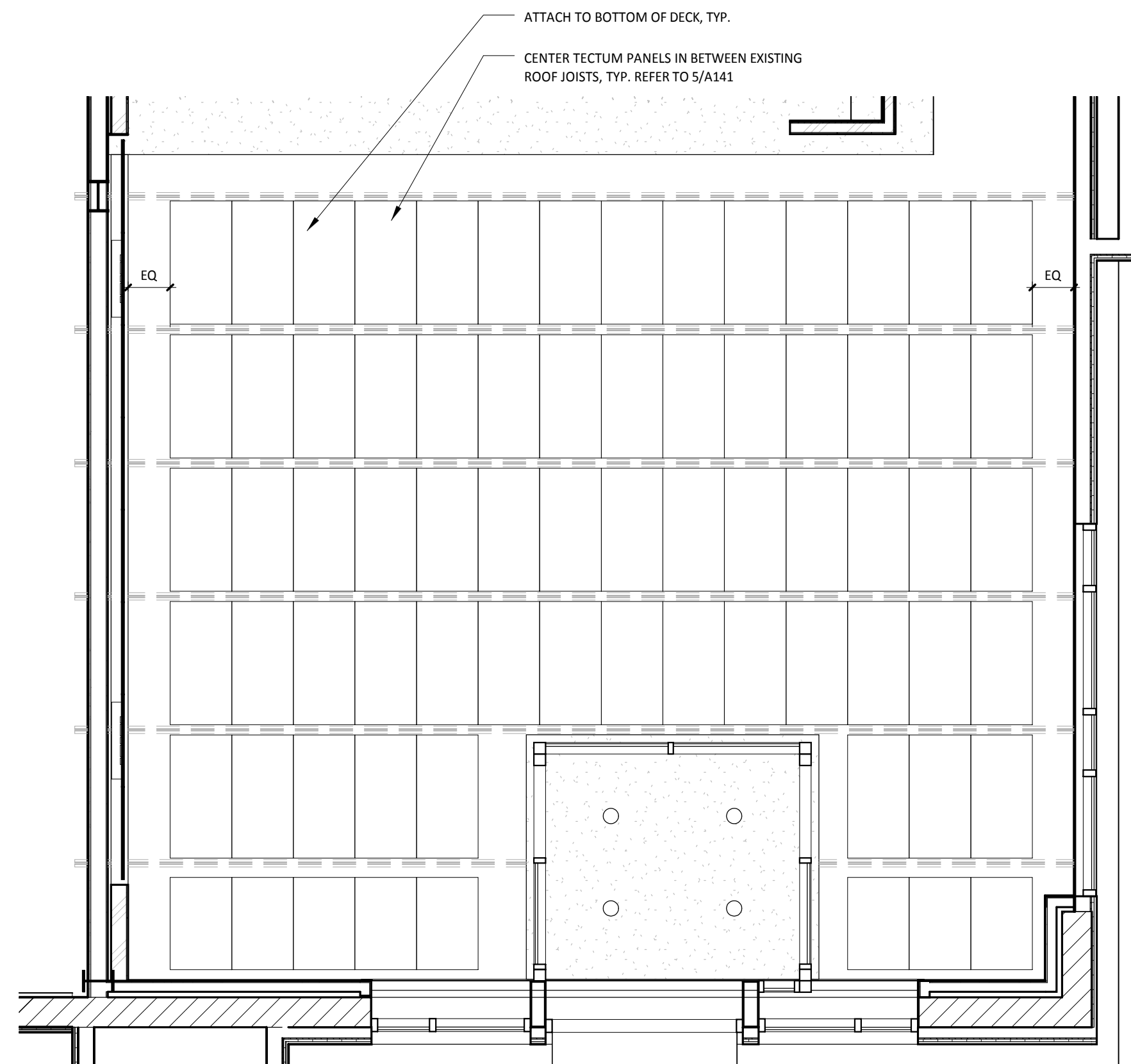
ITEM #	MOUNT	DESCRIPTION	QTY	REMARKS
A1	LAY-IN	2x2 LENSED TROFFER	4	SEE SHEET E100
B1	CEILING	RECESSED 6IN CAN LIGHT	38	SEE SHEET E100
C1	SURFACE	LOW PROFILE FLUORESCENT 2FT	12	SEE SHEET E100
C2	SURFACE	LOW PROFILE FLUORESCENT 3FT	16	SEE SHEET E100
E1	VARIOUS	EMERGENCY LIGHT - DUAL HEAD	3	SEE SHEET E100
E2	VARIOUS	EMERGENCY LIGHT - SINGLE HEAD	3	SEE SHEET E100
E4	VARIOUS	WHITE EXIT LIGHT - STANDARD RED LETTERS	5	SEE SHEET E100
F1	SURFACE	2' T8 FLUORESCENT FIXTURE	6	SEE SHEET E100
F3	SURFACE	3' T5 FLUORESCENT FIXTURE	16	SEE SHEET E100
H1	SURFACE	HOOD LIGHT	9	SEE SHEET E100
J1	CEILING	PENDANT LIGHT - ADJUSTABLE HEIGHT - PAR 20	18	SEE SHEET E100
J3	CEILING	PENDANT DOME LIGHT - ADJUSTABLE HEIGHT - PAR20	2	SEE SHEET E100
K2	CEILING	DOWN LIGHT	3	SEE SHEET E100
L1-6	SUSPENDED	LONG LIGHT - 6 TOP - PAR 20	2	SEE SHEET E100
L2-6	SUSPENDED	LONG LIGHT - 6 TOP - PAR 20 W/ EM BALLAST	1	SEE SHEET E100
P1	CEILING	ACCENT LIGHT - SWIVEL SPOT LIGHT - SINGLE HEAD	6	SEE SHEET E100

# GENERAL NOTES

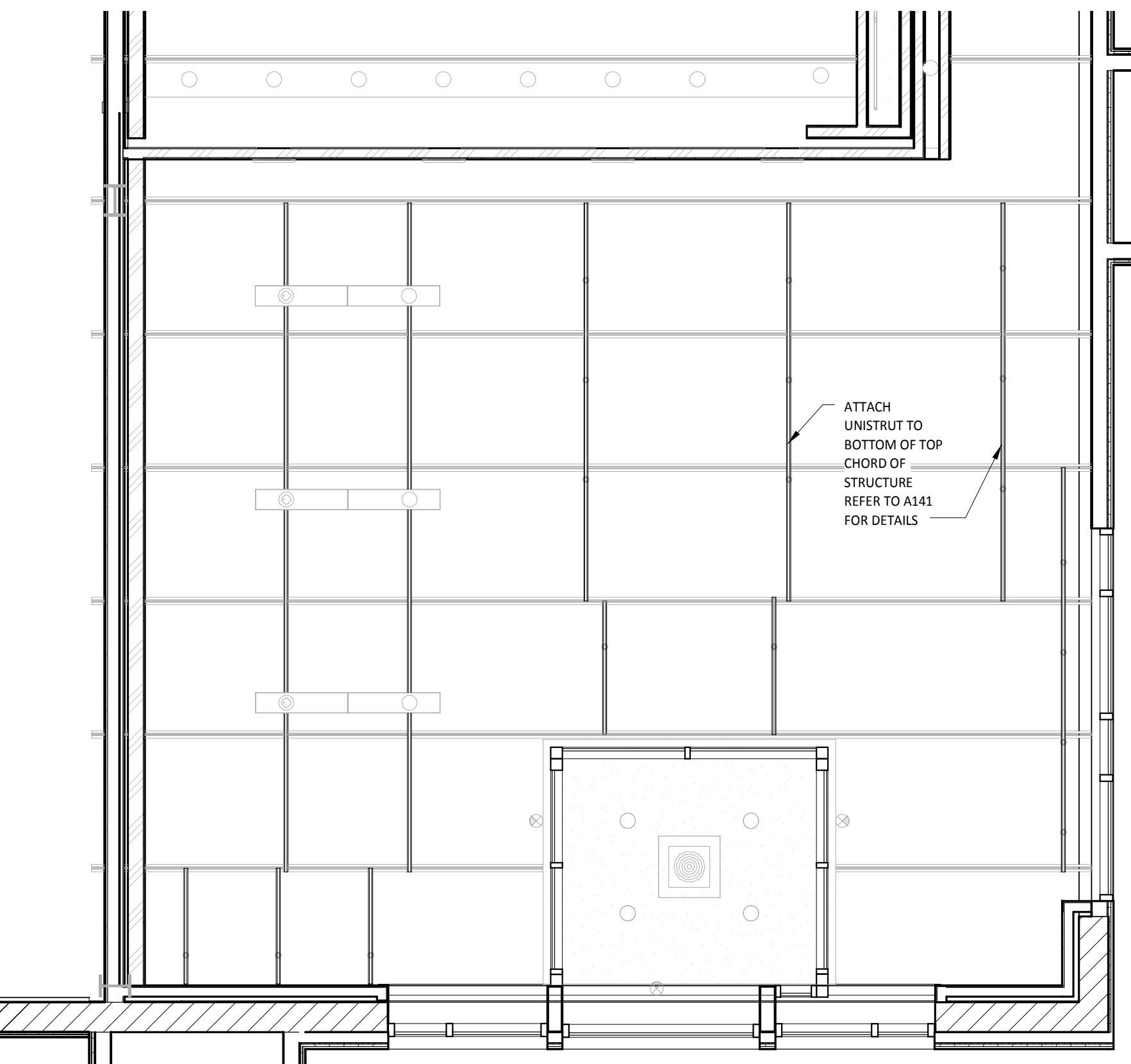
- ALL INTERIOR LIGHT FIXTURES AND LAMPS PROVIDED BY TENANT'S LIGHT/LAMP SUPPLIER.
- ALL INTERIOR LIGHT FIXTURES AND LAMPS INSTALLED BY GC. CAREFULLY REVIEW LIGHTING FIXTURE SCHEDULE ON SHEET E100.
- KITCHEN EXHAUST HOOD PROVIDED BY HS AND INSTALLED BY GC. GC TO COORDINATE PRESSURE TEST AND VIRO GUARD WITH ENVIROMAT, INC.
- ANSUL BOX & FIRE SUPPRESSION SYSTEM PROVIDED BY AND INSTALLED BY HS. HOOD INTERLOCK BY GC. ELECTRICAL CONNECTION BY GC, RE. ELEC.
- MENU BOARD ASSEMBLY PROVIDED BY TMB, INSTALLED BY G.C.
- PROVIDE BLOCKING ABOVE MENU BOARD ASSEMBLY FOR INSTALLATION.
- REFER TO "09900 PAINTING - GENERAL" IN SPECIFICATIONS FOR FINISHES AT EXPOSED CEILING AREAS IN ADDITION TO NOTES LISTED ON THIS SHEET.
- SOUND SYSTEM: REFER TO "CHIPOTLE STEREO GUIDE".
- UNISTRUT TO BE PAINTED TO MATCH STRUCTURE. PROVIDE MATCHING CLOSER STRIPS AND END CAPS. CLOSER STRIP TO BE APPLIED TO THE UNDERSIDE OF THE UNISTRUT.
- ALL HEIGHTS ARE TO BOTTOM OF FIXTURE UNLESS NOTED OTHERWISE.
- LIGHT DETAILS ARE LOCATED ON SHEET A141. FIXTURE AND LAMP SPECIFICATIONS ARE LOCATED ON E100.
- ALL UNISTRUT SUPPORTING CEILING ELEMENTS AND/ OR DUCT WORK SHALL NOT CONTAIN ANY ELECTRICAL CONDUIT. ALL ELECTRICAL CONDUIT MUST RUN IN SEPARATE UNISTRUT.
- ALL UNISTRUT, CONDUIT, SPRINKLER & WATER LINES SHALL BE INSTALLED TO THE BOTTOM OF THE DECK & PAINTED TO MATCH THE DECK.
- ALL DIMENSIONS ARE TO FACE OF FRAMING, OR CENTERLINE OF FIXTURE UNLESS NOTED OTHERWISE.
- SEE ELECTRICAL DRAWINGS FOR SHATTER RESISTANT LAMP LOCATIONS.
- ALL EMERGENCY FIXTURES, LIGHTS AND STROBES SHALL BE ALIGNED OR CENTERED ON WALLS.
- FULL CERAMIC TILE COURSING SHALL TAKE PRECEDENT OVER ANY CEILING/HEADER DIMENSION INDICATED IN THE PLAN, REFER TO A120.
- ALL CONDUIT AND PIPE PENETRATIONS OF THE SERVING LINE SOFFIT ARE TO BE HELD TIGHT TO THE DECK, WITHIN THE JOIST SHELF SPACE. PLEASE CONSULT WITH THE CHIPOTLE CM SHOULD ANY CONFLICTS ARISE.
- BATT INSULATION TO BE INSTALLED ABOVE THE RESTROOM CEILING.
- ALL LAY-IN CEILING PENETRATIONS TO BE HELD TIGHT TO WALLS. REFER TO 12/A141 AND PLUMBING DRAWINGS FOR DETAILS.
- REFER TO STRUCTURAL DRAWINGS FOR HOOD SUSPENSION DETAILS.
- ALL EXTERIOR BUILDING MOUNTED AND PATIO LIGHT FIXTURES AND LAMPS PROVIDED BY TENANT'S LIGHT/LAMP SUPPLIER.
- ALL EXTERIOR PARKING LOT LIGHT FIXTURES AND LAMPS PROVIDED BY AND INSTALLED BY G.C. CAREFULLY REVIEW LIGHTING FIXTURE SCHEDULE ON SHEET E100.
- ALL EXTERIOR BUILDING MOUNTED AND PATIO LIGHT FIXTURES AND LAMPS INSTALLED BY G.C. CAREFULLY REVIEW LIGHTING FIXTURE SCHEDULE ON SHEET E100.
- SECURITY CAMERA LOCATIONS ARE ONLY APPROXIMATE LOCATIONS. FOR GUIDANCE ON THE SPECIFIC LOCATION/ORIENTATION OF THESE CAMERAS, REFER TO THE ENVISION INSTALLATION GUIDE.

# SECURITY SYSTEM \*REFER TO ELECTRICAL DRAWINGS FOR ADDITIONAL INFORMATION

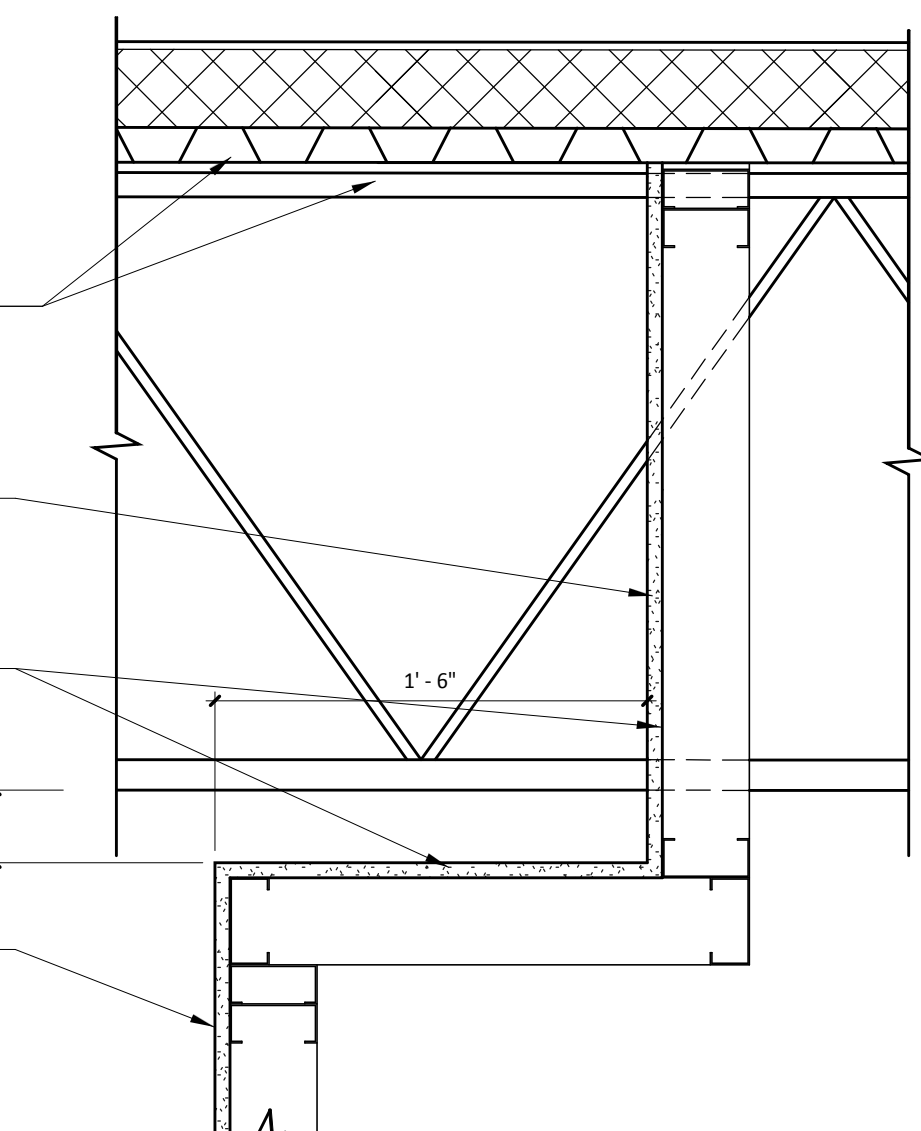
DESCRIPTION	QTY	SUPPLIED BY	INSTALLED BY	ELEC	GAS	SEWER	WATER	REMARKS
Security Monitor	1	SSS	SSS	•				
Security Alarm - Motion Detectors	1	T.B.D.	T.B.D.	•				GC Responsible For Coordinating Sequencing Of Prewiring With Completion Of Interior Finishes ( Gyp. Bd. Finishes)
72 HR Security DVR	1	SSS	SSS	•				
Closed Circuit T.V. Camera - Indoor	5	SSS	SSS	•				



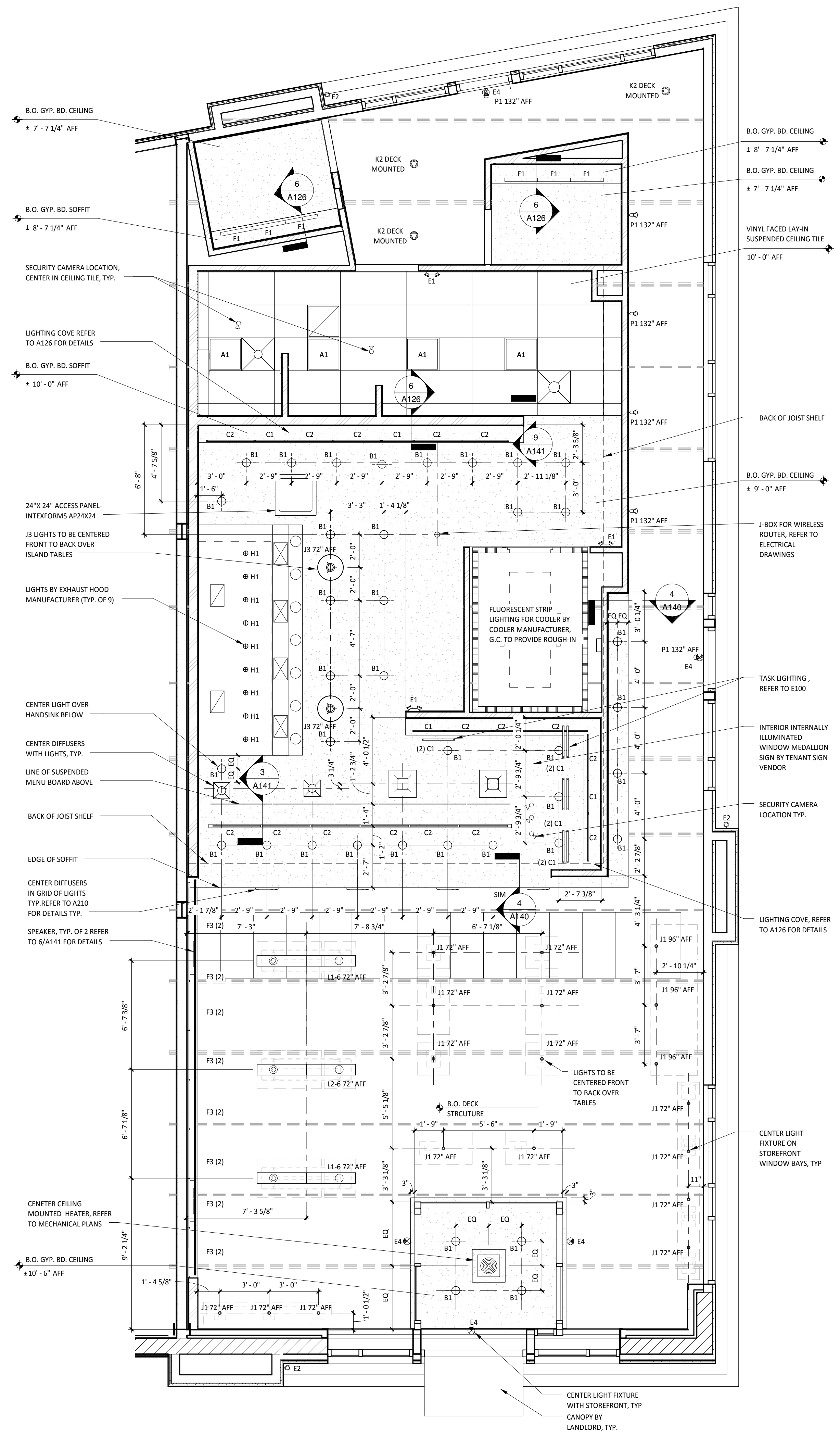
TECTUM PLAN  
1/4" = 1'-0"



UNISTRUT AND DUCTWORK LAYOUT  
1/4" = 1'-0"



SOFFIT DETAIL @ ROOF JOIST  
1/2" = 1'-0"



REFLECTED CEILING PLAN  
1/4" = 1'-0"

red  
architecture + planning  
855 GRANDVIEW AVENUE SUITE 295  
COLUMBUS, OHIO 43215  
PHONE: 614.487.8770  
FAX: 614.487.8777



COPYRIGHT 2015  
THIS DRAWING IS AN INSTRUMENT OF SERVICE AND AS SUCH REMAINS THE PROPERTY OF CHIPOTLE MEXICAN GRILL, INC. PERMISSION FOR USE OF THIS DOCUMENT IS LIMITED AND CAN BE EXTENDED ONLY BY WRITTEN AGREEMENT WITH CHIPOTLE MEXICAN GRILL, INC.



CHIPOTLE MEXICAN GRILL, INC.  
1401 WYNWOOD STREET, SUITE 500  
DENVER, COLORADO 80202  
TELEPHONE: (303) 595-4000  
FAX: (303) 595-4014  
INTERNET: WWW.CHIPOTLE.COM

STORE NO.: 2603  
PORTLAND MARGINAL WAY  
195 KENNEBEC ST  
PORTLAND, ME 04101

Issue Record:  
09/15/15 PERMIT/LANDLORD REVIEW

Revisions:

Drawn: TC, BP, DP  
Checked: KH, TC

Project No.: CMG507

Contents:  
Reflected Ceiling Plan

A140  
Date of Last Print: 09/15/15