

NOTE: ALL CONCEALED WOOD TO BE FRT RATED



COPYRIGHT 2015
THIS DRAWING IS AN INSTRUMENT OF SERVICE AND AS SUCH
REMAINS THE PROPERTY OF CHIPOTLE MEXICAN GRILL, INC.
PERMISSION FOR USE OF THIS DOCUMENT IS LIMITED AND
CAN BE EXTENDED ONLY BY WRITTEN AGREEMENT WITH
CHIPOTLE MEXICAN GRILL, INC.



CHIPOTLE MEXICAN GRILL, INC.
1401 WYNKOOP STREET, SUITE 500
DENVER, COLORADO 80202
TELEPHONE: (303) 598-4000
FAX: (303) 595-4014
INTERNET: WWW.CHIPOTLE.COM

STORE NO.: 2603
PORTLAND MARGINAL WAY
195 KENNEBEC ST
PORTLAND, ME 04101

Issue Record:
09/15/15 PERMIT/LANDLORD REVIEW

Revisions:

Drawn: T.C., B.P., D.P. Checked: KH, T.C.

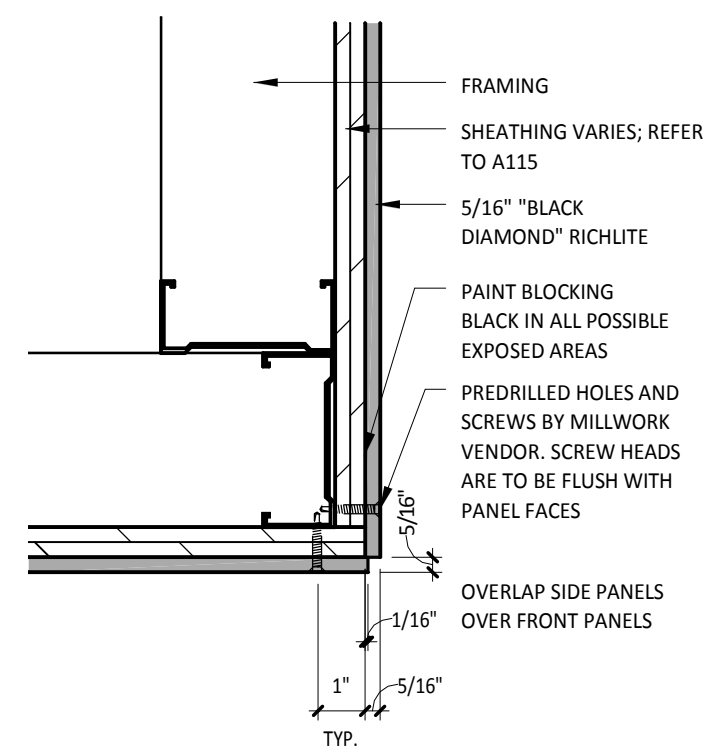
Project No.: CMG507

Contents:

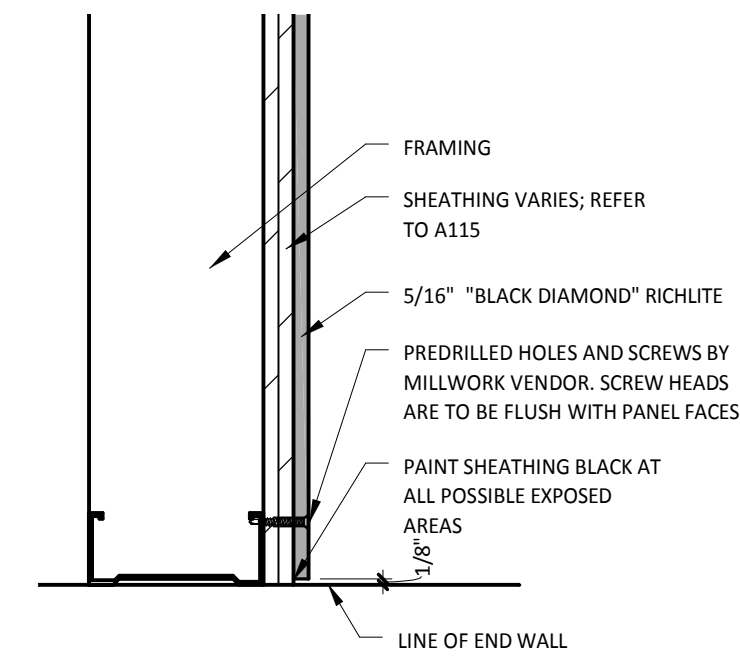
Finish Details

A125

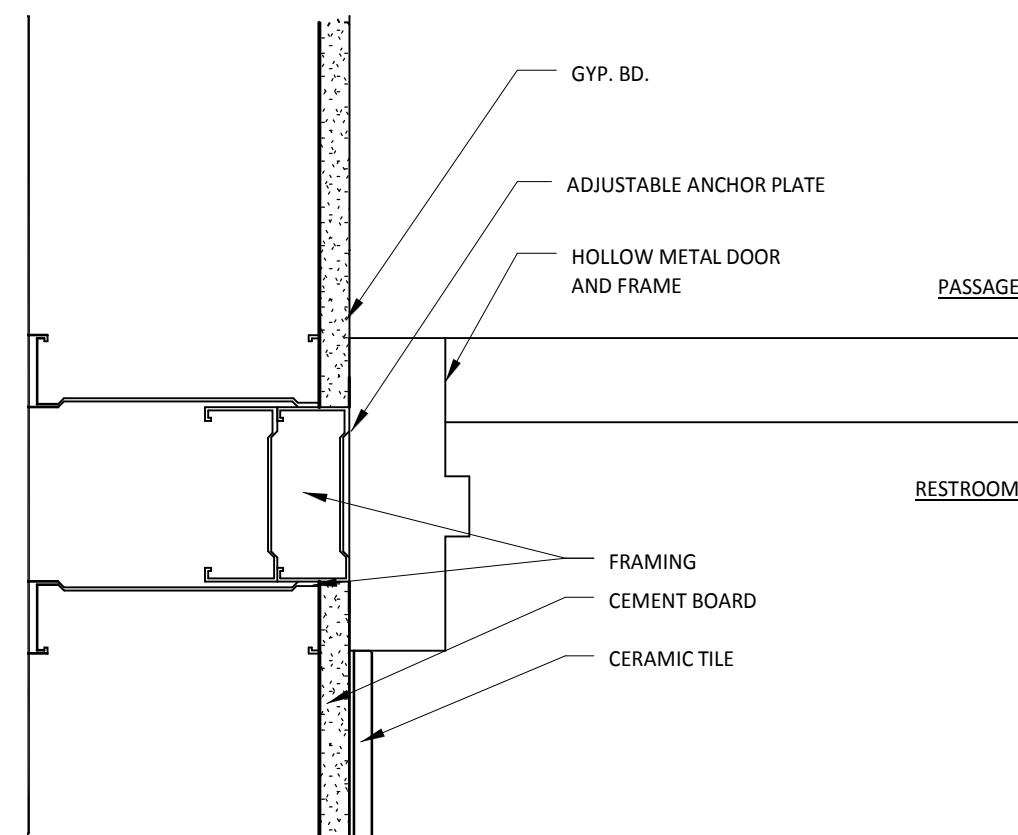
Date of Last Print: 09/15/15



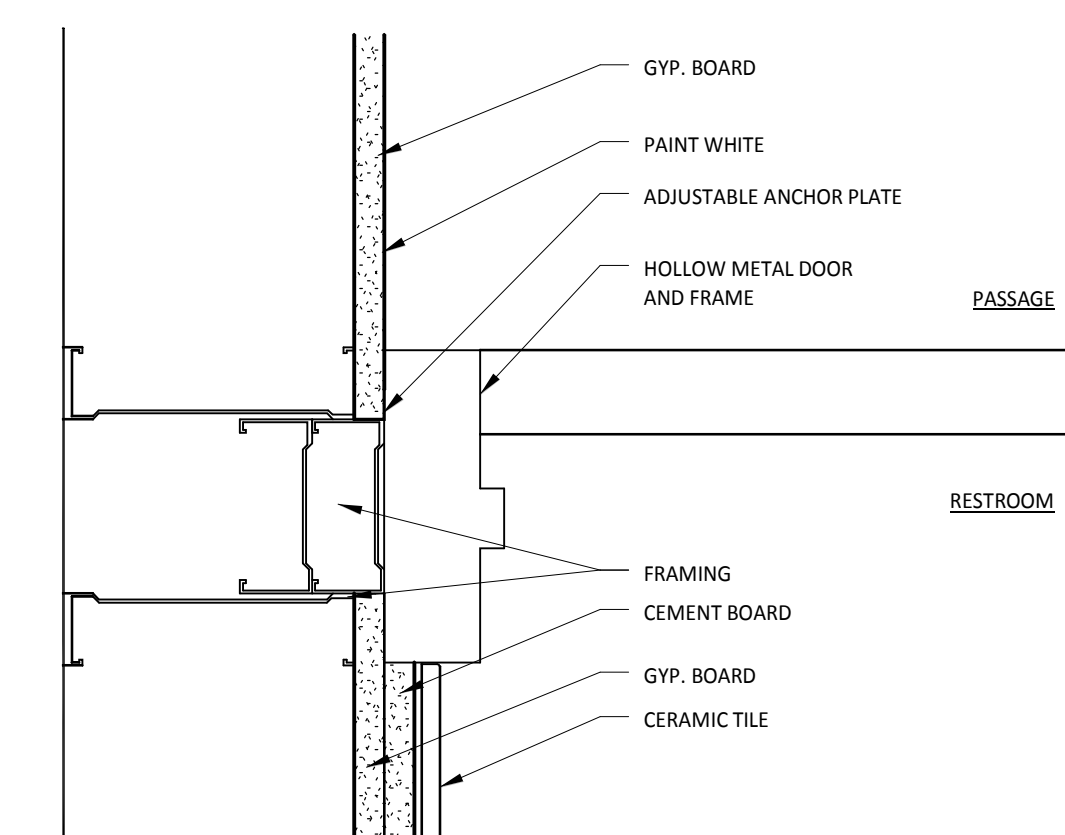
18 A125 PLAN DETAIL - TYP. WAINSCOT CORNER
3'-1'-0"



17 A125 PLAN DETAIL - TYP. WAINSCOT END CONDITION
3'-1'-0"

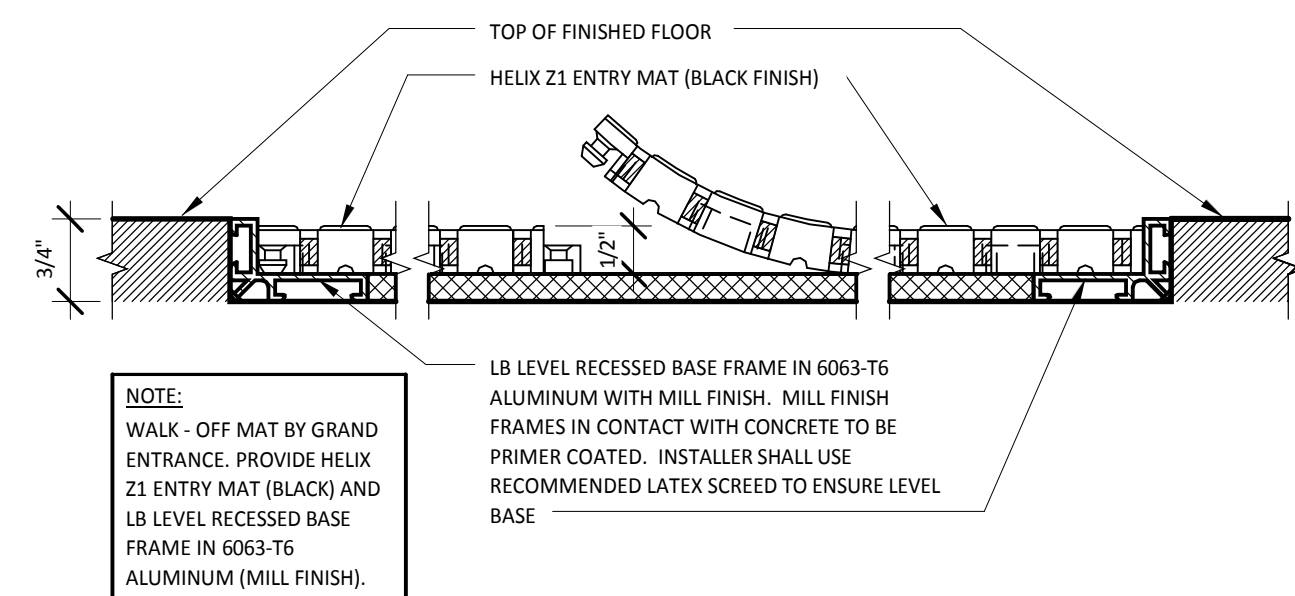


16 A125 DOOR JAMB - PLAN DETAIL
3'-1'-0"



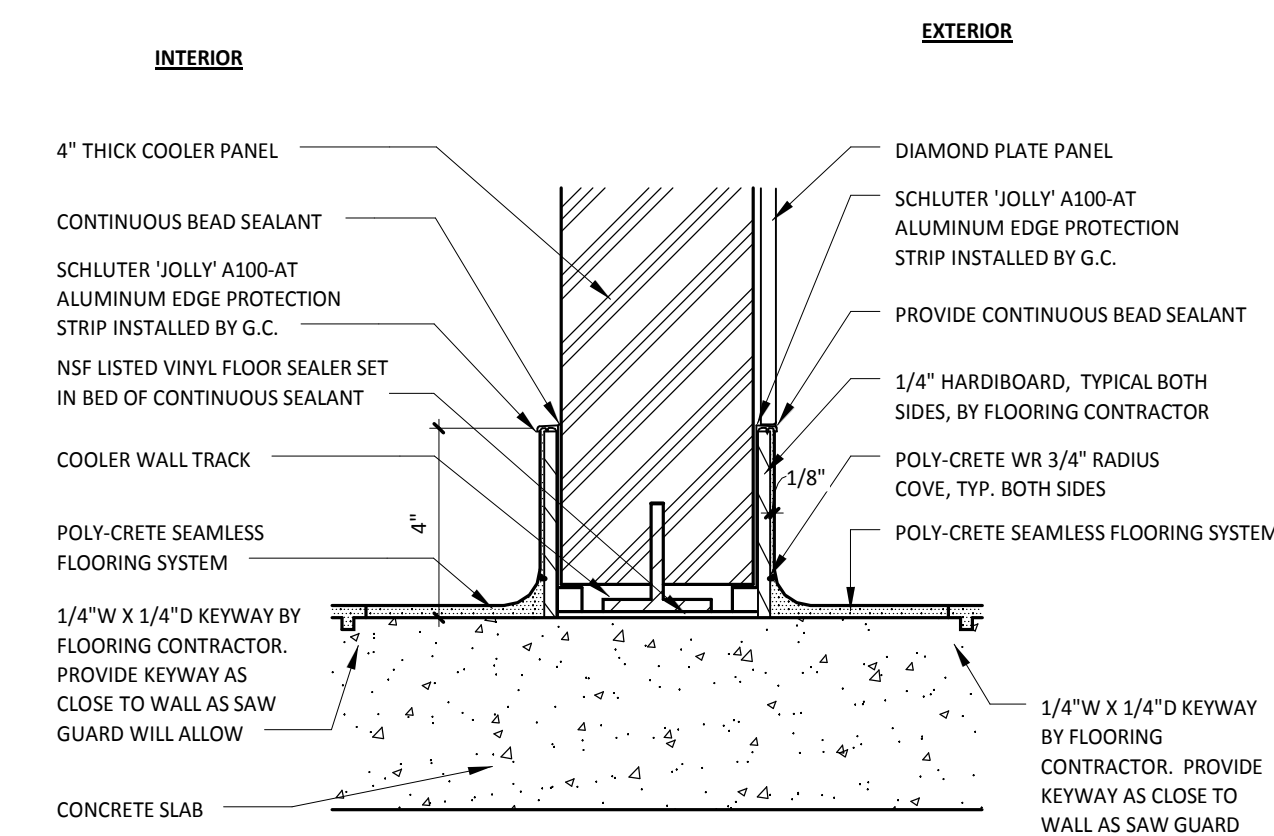
15 A125 DOOR JAMB - PLAN DETAIL
3'-1'-0"

14 A125 NOT USED
3'-1'-0"

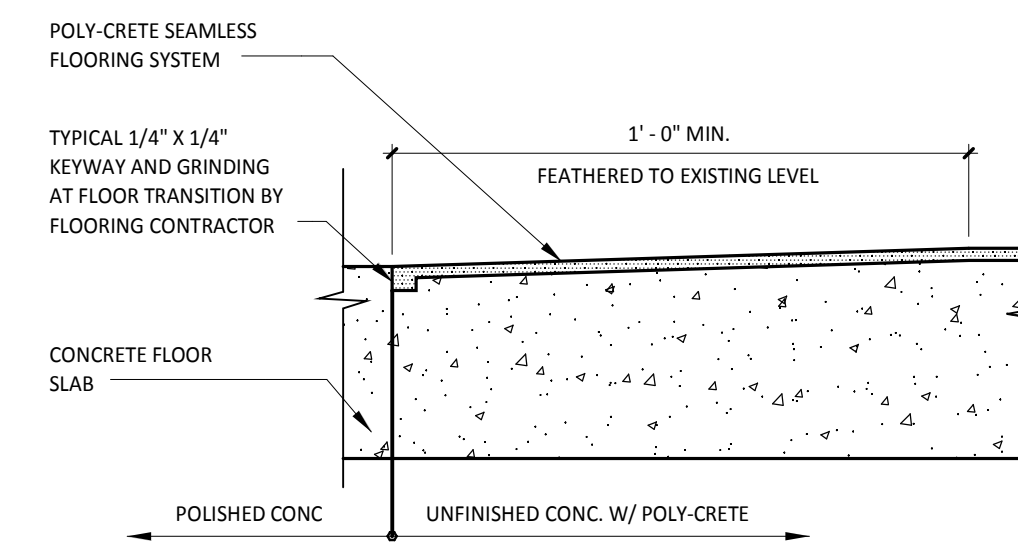


NOTE:
WALK-OFF MAT BY GRAND
ENTRANCE. PROVIDE HELIX
Z1 ENTRY MAT (BLACK) AND
1/8" LEVEL RECESSED BASE
FRAME IN 6063-T6
ALUMINUM (MILL FINISH).

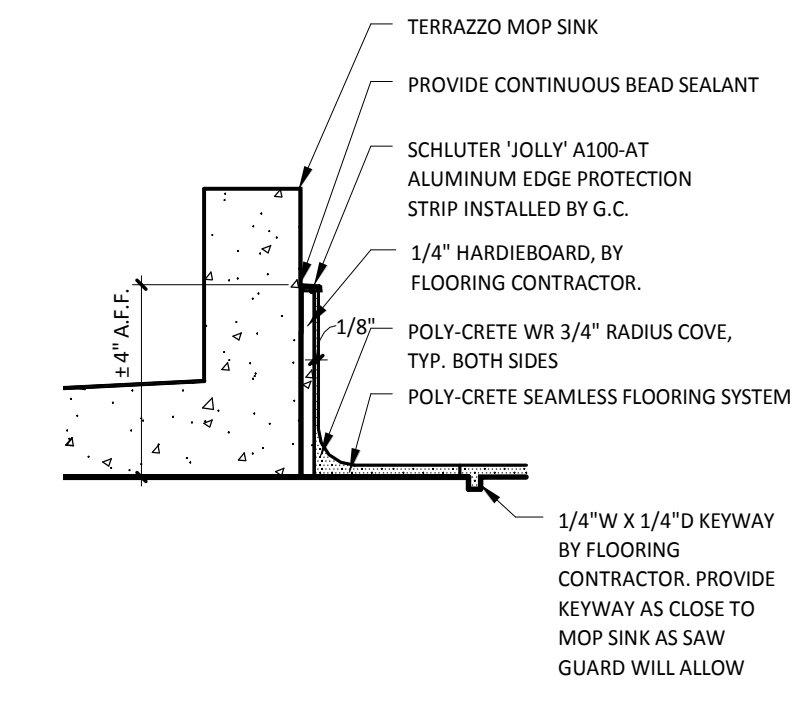
12 A125 WALK-OFF MAT DETAIL
6'-1'-0"



11 A125 COOLER WALL @ POLYCRETE
3'-1'-0"



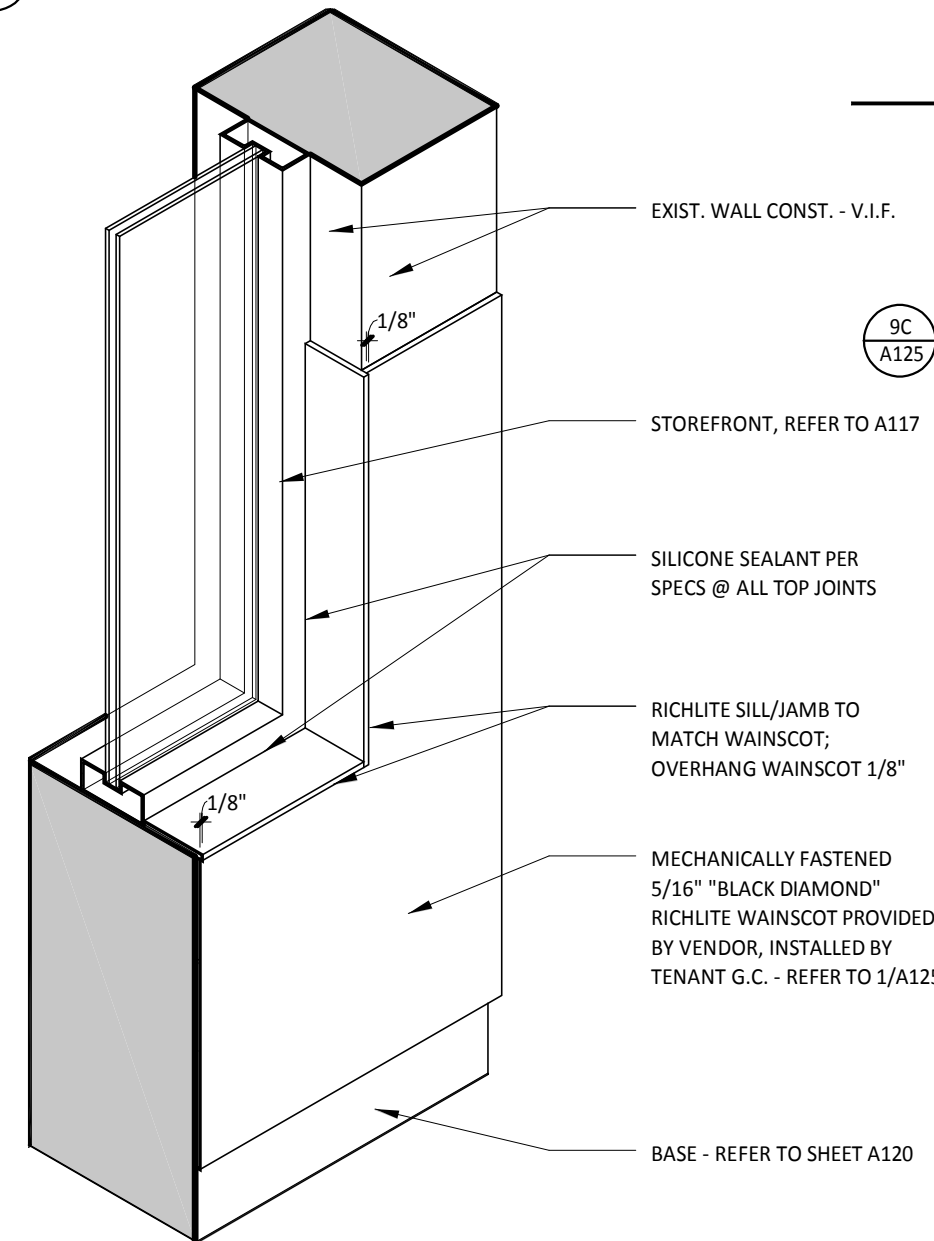
10 A125 SMOOTH FLOOR TRANSITION
3'-1'-0"



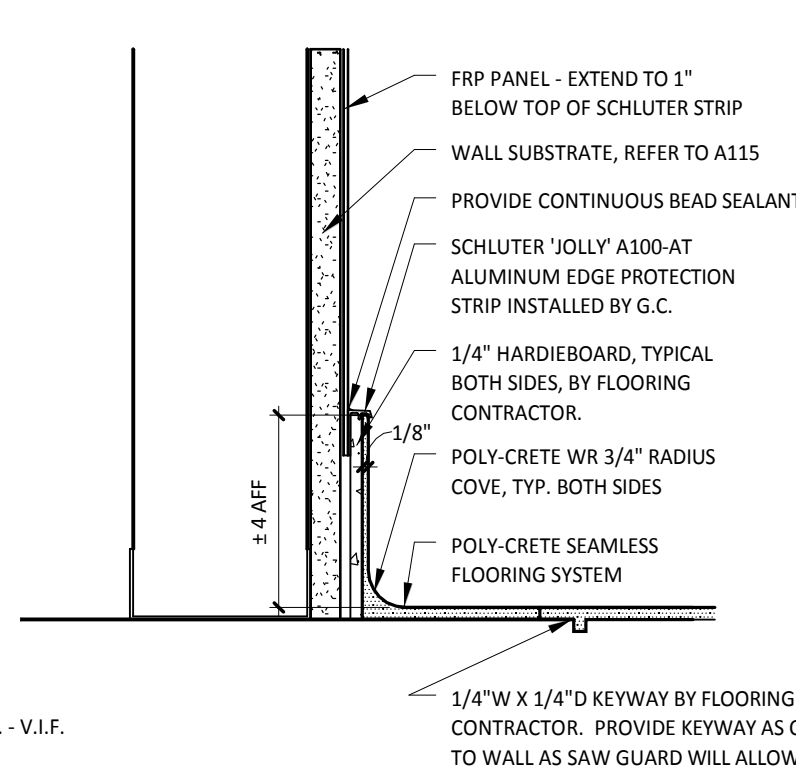
9E A125 POLYCRETE BASE DETAIL @ MOP SINK
3'-1'-0"

13 A125 NOT USED
N.T.S.

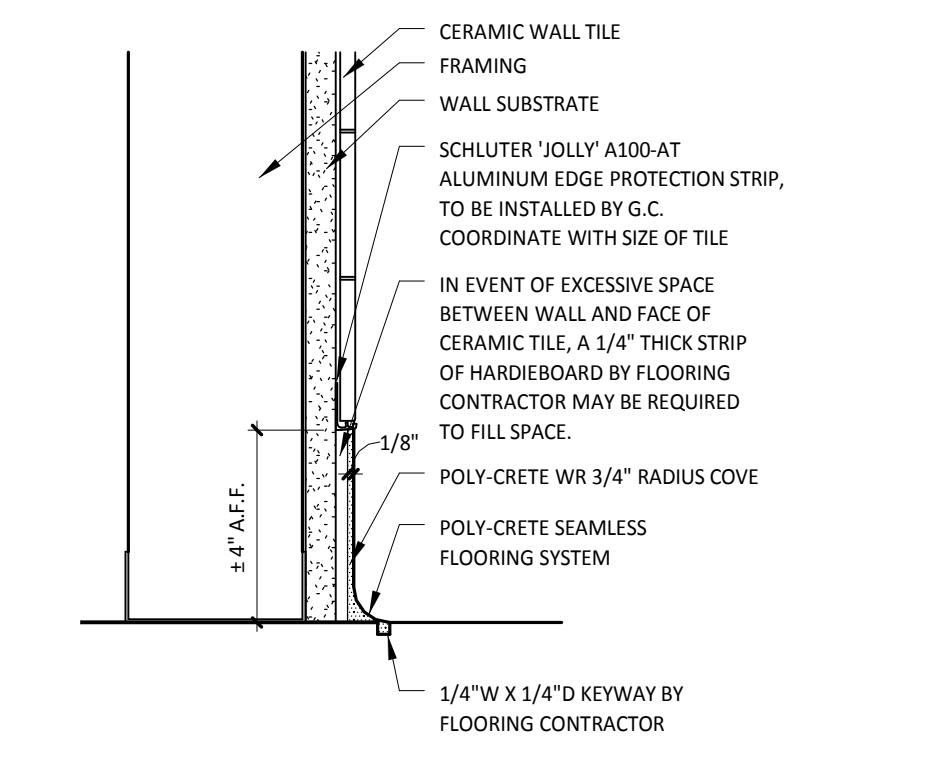
9D A125 NOT USED
N.T.S.



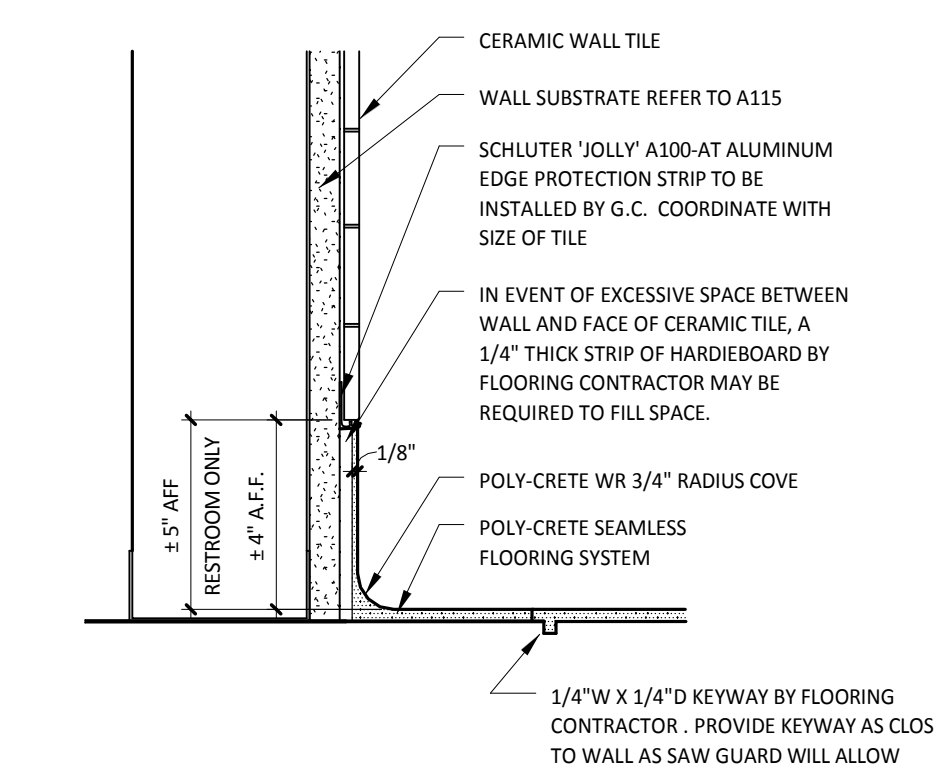
6 A125 SECTION @ WAINSCOT SILL / JAMB
1'-1'-0"



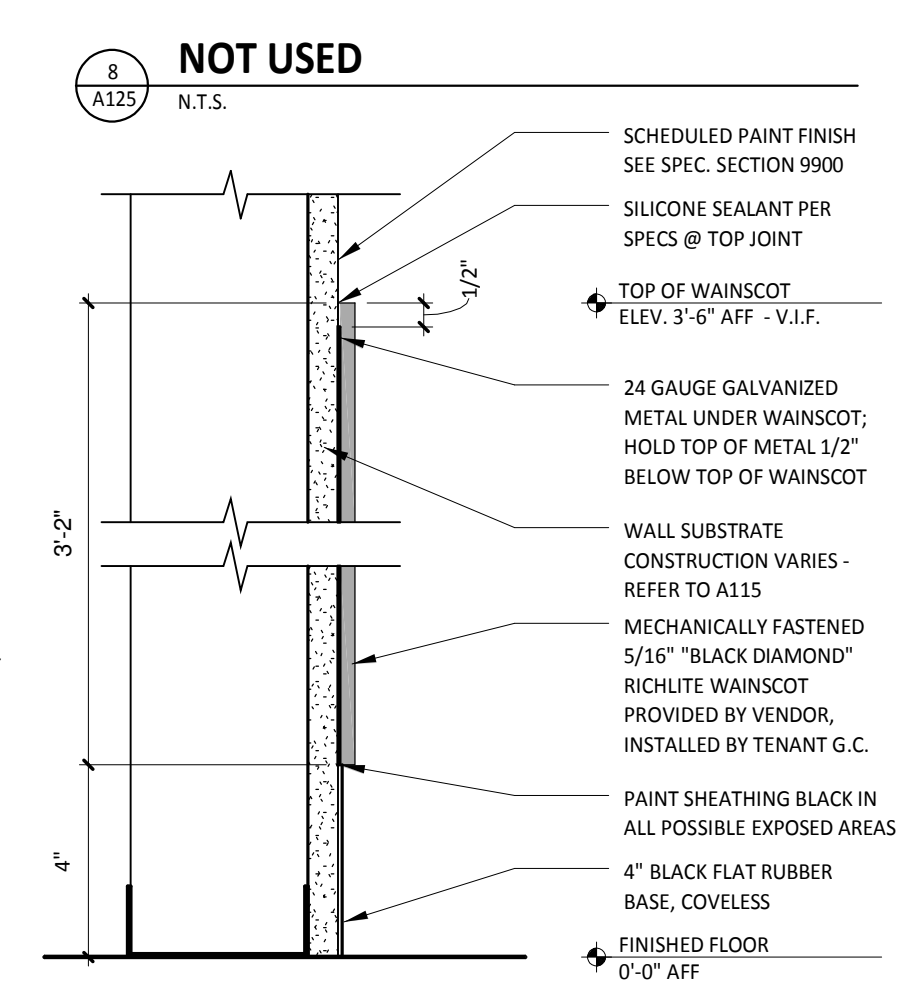
9C A125 POLYCRETE BASE DETAIL @ FRP
3'-1'-0"



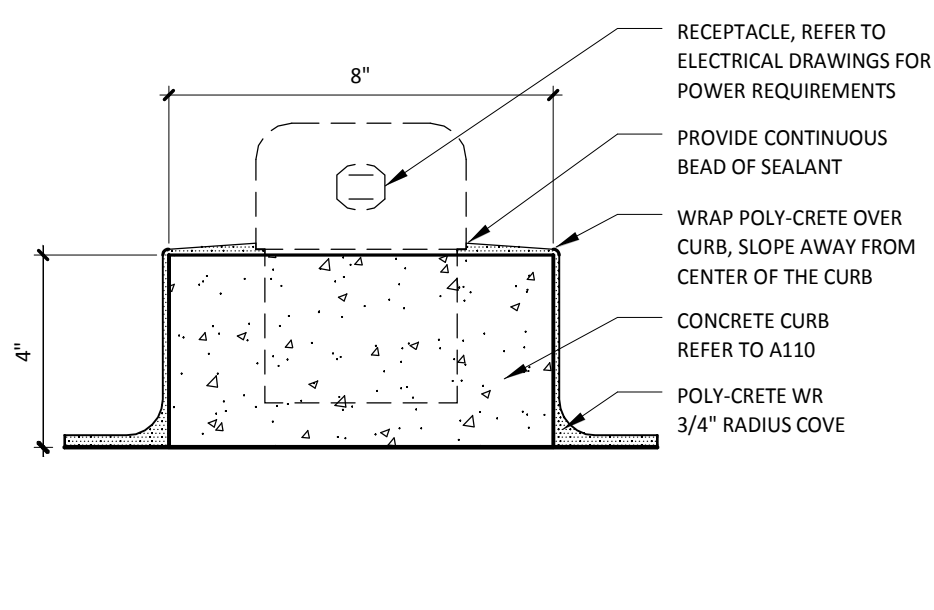
9B A125 POLYCRETE BASE DETAIL @ TILE TO CONCRETE
3'-1'-0"



9A A125 POLYCRETE BASE DETAIL @ TILE TO POLYCRETE
3'-1'-0"



2 A125 SECTION @ WAINSCOT @ EXST. GYP. BD.
3'-1'-0"



7 A125 CURB DETAIL UNDER PREP/CUTTING TABLES
3'-1'-0"

5 A125 NOT USED
N.T.S.

4 A125 NOT USED
N.T.S.

3 A125 SECTION @ WAINSCOT SILL/JAMB
3'-1'-0"

1 A125 SECTION @ WAINSCOT @ NEW WALLS
3'-1'-0"