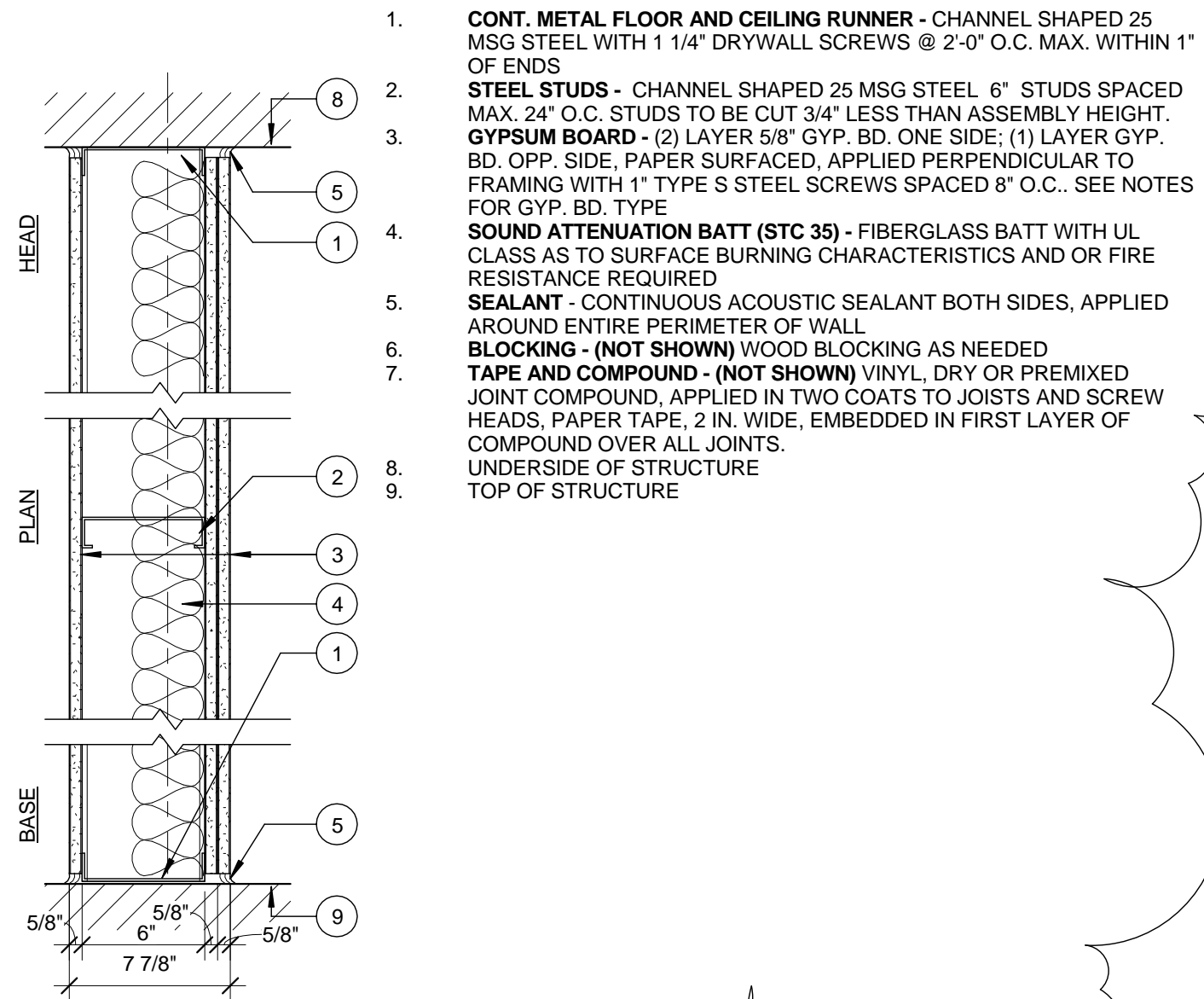
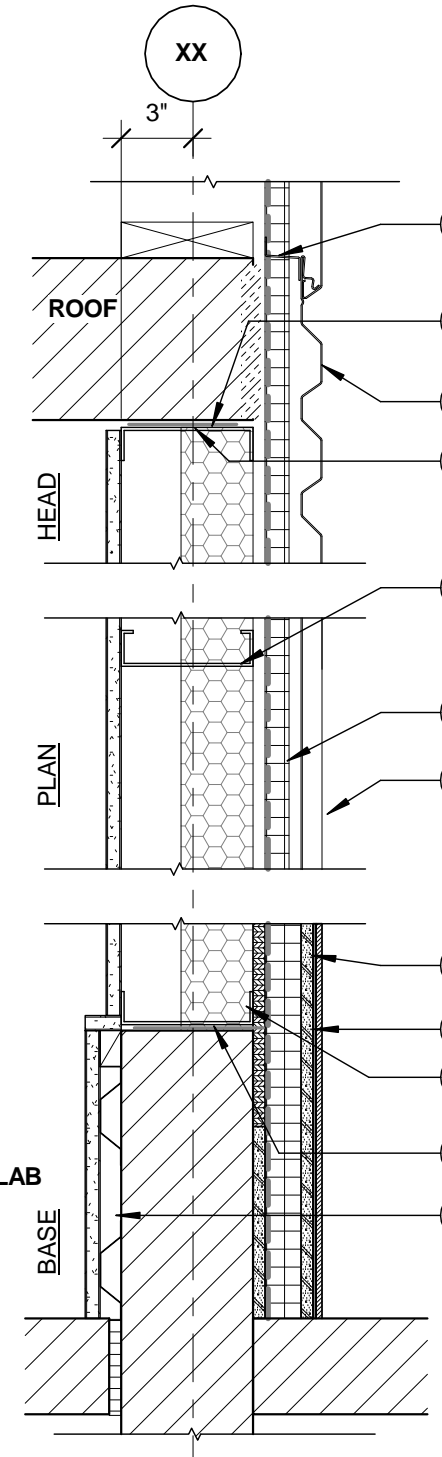


W01 1-HR RATED NON-BEARING ACOUSTICAL PARTITION
DESIGN NUMBER - UL 419
50 STC SOUND - RAL-TL-11-078



- CONT. METAL FLOOR AND CEILING RUNNER - CHANNEL SHAPED 25 MSG STEEL WITH 1 1/4" DRYWALL SCREWS @ 2'-0" O.C. MAX. WITHIN 1" OF ENDS
- STEEL STUDS - CHANNEL SHAPED 25 MSG STEEL 6" STUDS SPACED MAX. 24" O.C. STUDS TO BE CUT 3/4" LESS THAN ASSEMBLY HEIGHT.
- GYPSUM BOARD - (2) LAYER 5/8" GYP. BD. ONE SIDE; (1) LAYER GYP. BD. OPP. SIDE, PAPER SURFACED, APPLIED PERPENDICULAR TO FRAMING WITH 1" TYPE S STEEL SCREWS SPACED 8" O.C.. SEE NOTES FOR GYP. BD. TYPE
- SOUND ATTENUATION BATT (STC 35) - FIBERGLASS BATT WITH UL CLASS AS TO SURFACE BURNING CHARACTERISTICS AND OR FIRE RESISTANCE REQUIRED
- SEALANT - CONTINUOUS ACOUSTIC SEALANT BOTH SIDES, APPLIED AROUND ENTIRE PERIMETER OF WALL
- BLOCKING - (NOT SHOWN) WOOD BLOCKING AS NEEDED
- TAPE AND COMPOUND - (NOT SHOWN) VINYL DRY OR PREMIXED JOINT COMPOUND, APPLIED IN TWO COATS TO JOISTS AND SCREW HEADS, PAPER TAPE, 2 IN. WIDE, EMBEDDED IN FIRST LAYER OF COMPOUND OVER ALL JOINTS.
- UNDERSIDE OF STRUCTURE
- TOP OF STRUCTURE

01 BEARING, NON RATED EXTERIOR WALL
STC SOUND - N/A



- CONT. METAL FLOOR AND CEILING RUNNER - CHANNEL SHAPED 25 MSG STEEL WITH 1 1/4" SCREWS @ 2'-0" O.C. MAX. WITHIN 1" OF ENDS
- STEEL STUDS - CHANNEL SHAPED 25 MSG 20 GA STEEL 6" STUDS SPACED MAX. 24" O.C. STUDS TO BE CUT 3/4" LESS THAN ASSEMBLY HEIGHT
- SPRAY FOAM INSULATION - 3" CLOSED CELL SPRAY FOAM INSULATION
- RIGID INSULATION - 1" XPS ADHERED TO 1/2" SHEATHING. MECHANICALLY FASTEN PANEL TO STUDS WITH 4" TRUEFAST SIP TP SCREWS HI-LOW TREATED W/ CLIMACOAT 6" O.C. ALONG THE PERIMETER OF THE PANEL AND 12" O.C. WITHIN THE FIELD OF THE PANEL.
- AIRMOISTURE BARRIER - REFER TO SPECIFICATION.
- 1 1/2" Z" GIRT - INSTALLED AT PANEL HORIZONTAL EDGES AT 12" O.C. VERTICALLY
- FIRESTONE DELTA UNA-CLAD METAL PANEL - EXTERIOR CLADDING SYSTEM - REFER TO SPECIFICATION
- BOND COAT FOR SETTING TILE - LATEX MODIFIED PORTLAND CEMENT MORTAR APPLIED WITH A NOTCHED TROWEL
- 12" X 12" DALITILE COLORBODY PORCELAIN TILE
- GYPSUM BOARD - (1) LAYER 5/8" GYP. BD. PAPER SURFACED, APPLIED PERPENDICULAR TO FRAMING WITH 1" TYPE S STEEL SCREWS SPACED 8" O.C.. SEE NOTES FOR GYP. BD. TYPE
- BED OF SEALANT - MTL TRACKS IN CONTACT WITH CONCRETE TO BE SET IN A FULL BED OF SEALANT. SEAL OTHER TRACKS TO DECK.

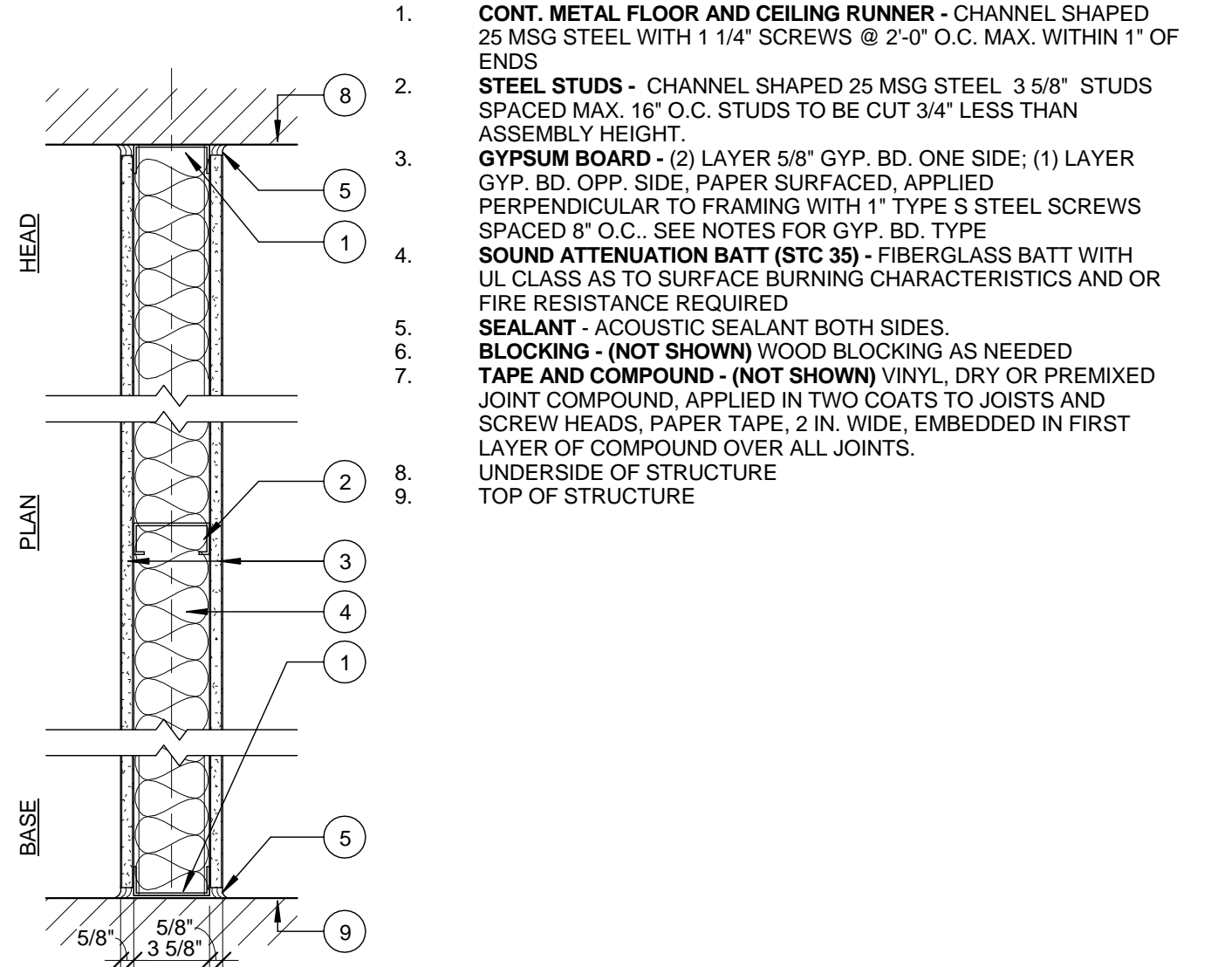
SEE EXT. DETAILS FOR THRU FLASHING, ACCESSORIES, AND DETAILS

MARGINAL WAY

2 WALL TYPE W01 - NON RATED - ACOUST. PART.
1 1/2" = 1'-0"

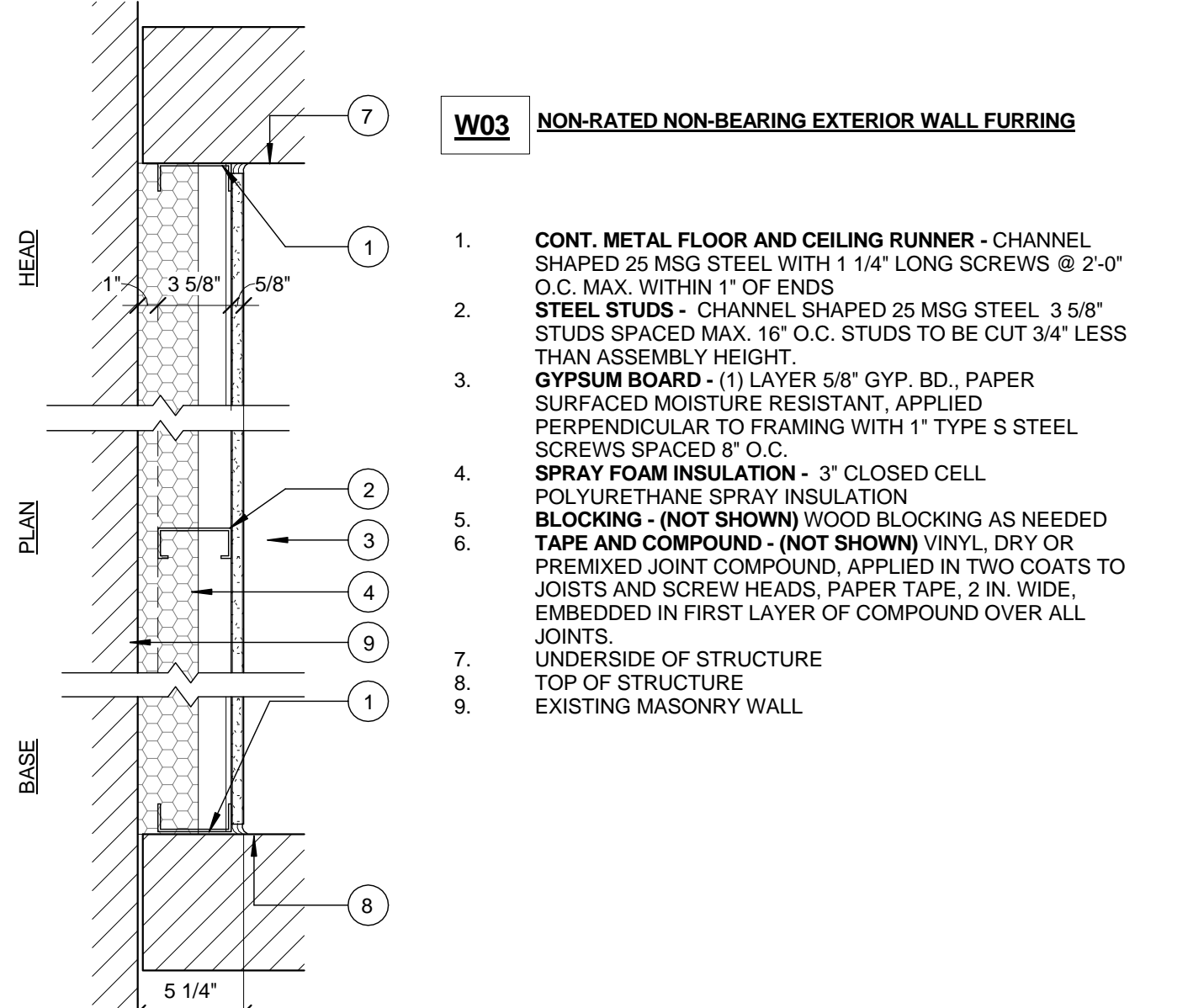
5 WALL TYPE 01 - EXTERIOR WALL
1 1/2" = 1'-0"

W02 NON-RATED NON-BEARING PARTITION
DESIGN NUMBER - N/A
35 STC SOUND - RAL-TL-11-078



- CONT. METAL FLOOR AND CEILING RUNNER - CHANNEL SHAPED 25 MSG STEEL WITH 1 1/4" SCREWS @ 2'-0" O.C. MAX. WITHIN 1" OF ENDS
- STEEL STUDS - CHANNEL SHAPED 25 MSG STEEL 3 5/8" STUDS SPACED MAX. 16" O.C. STUDS TO BE CUT 3/4" LESS THAN ASSEMBLY HEIGHT.
- GYPSUM BOARD - (2) LAYER 5/8" GYP. BD. ONE SIDE; (1) LAYER GYP. BD. OPP. SIDE, PAPER SURFACED, APPLIED PERPENDICULAR TO FRAMING WITH 1" TYPE S STEEL SCREWS SPACED 8" O.C.. SEE NOTES FOR GYP. BD. TYPE
- SOUND ATTENUATION BATT (STC 35) - FIBERGLASS BATT WITH UL CLASS AS TO SURFACE BURNING CHARACTERISTICS AND OR FIRE RESISTANCE REQUIRED.
- SEALANT - ACOUSTIC SEALANT BOTH SIDES.
- BLOCKING - (NOT SHOWN) WOOD BLOCKING AS NEEDED
- TAPE AND COMPOUND - (NOT SHOWN) VINYL DRY OR PREMIXED JOINT COMPOUND, APPLIED IN TWO COATS TO JOISTS AND SCREW HEADS, PAPER TAPE, 2 IN. WIDE, EMBEDDED IN FIRST LAYER OF COMPOUND OVER ALL JOINTS.
- UNDERSIDE OF STRUCTURE
- TOP OF STRUCTURE

3 WALL TYPE W02 - NON RATED - ACOUST. PART.
1 1/2" = 1'-0"



W03 NON-RATED NON-BEARING EXTERIOR WALL FURRING

- CONT. METAL FLOOR AND CEILING RUNNER - CHANNEL SHAPED 25 MSG STEEL WITH 1 1/4" LONG SCREWS @ 2'-0" O.C. MAX. WITHIN 1" OF ENDS
- STEEL STUDS - CHANNEL SHAPED 25 MSG STEEL 3 5/8" STUDS SPACED MAX. 16" O.C. STUDS TO BE CUT 3/4" LESS THAN ASSEMBLY HEIGHT.
- GYPSUM BOARD - (1) LAYER 5/8" GYP. BD., PAPER SURFACED MOISTURE RESISTANT, APPLIED PERPENDICULAR TO FRAMING WITH 1" TYPE S STEEL SCREWS SPACED 8" O.C.
- SPRAY FOAM INSULATION - 3" CLOSED CELL POLYURETHANE SPRAY INSULATION
- BLOCKING - (NOT SHOWN) WOOD BLOCKING AS NEEDED
- TAPE AND COMPOUND - (NOT SHOWN) VINYL DRY OR PREMIXED JOINT COMPOUND, APPLIED IN TWO COATS TO JOISTS AND SCREW HEADS, PAPER TAPE, 2 IN. WIDE, EMBEDDED IN FIRST LAYER OF COMPOUND OVER ALL JOINTS.
- UNDERSIDE OF STRUCTURE
- TOP OF STRUCTURE
- EXISTING MASONRY WALL

4 WALL TYPE W03 - MTL FUR - INSL - 6 3/8"
1 1/2" = 1'-0"

1 BUILDING B FLOOR PLAN
1/8" = 1'-0"

