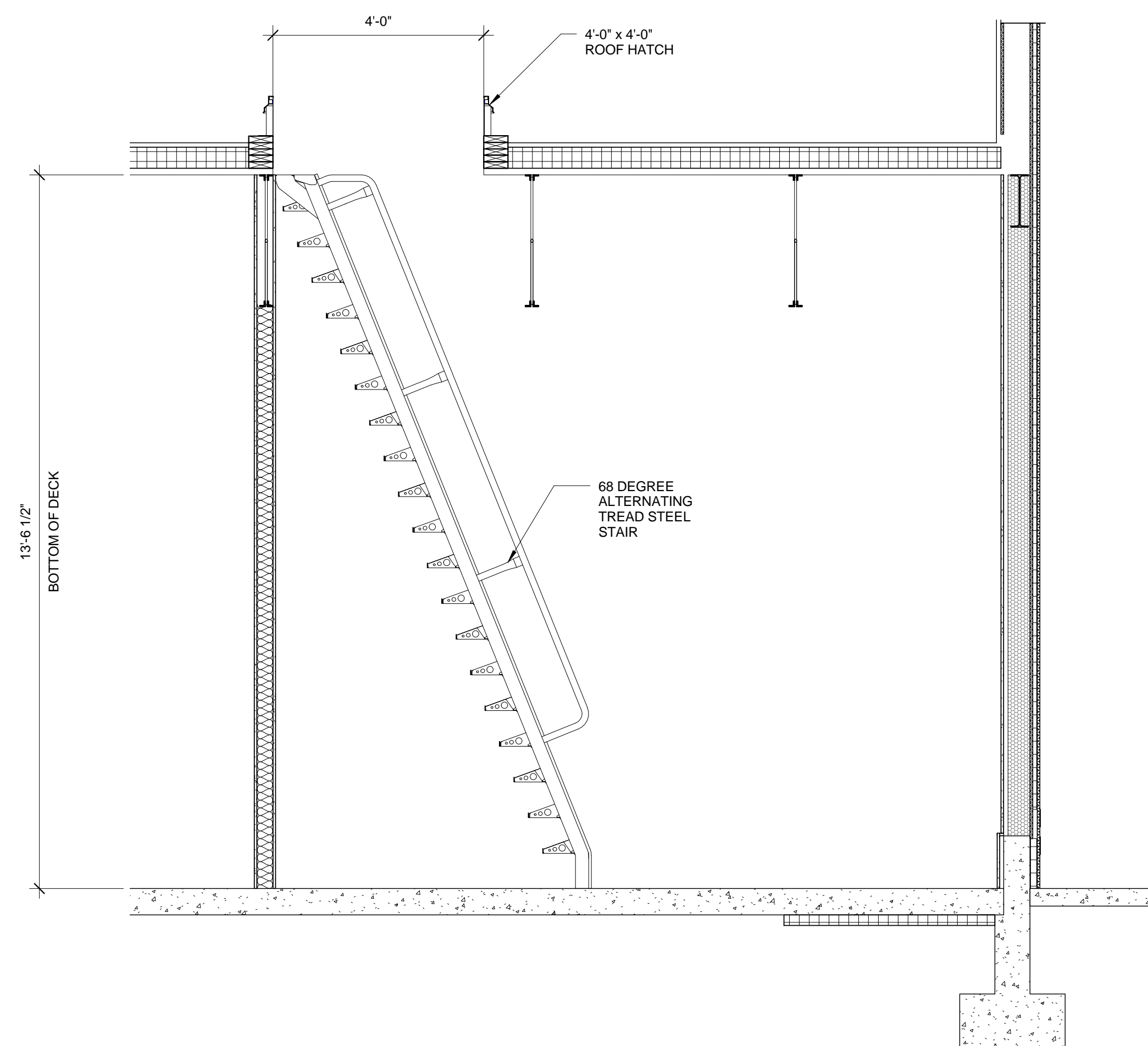
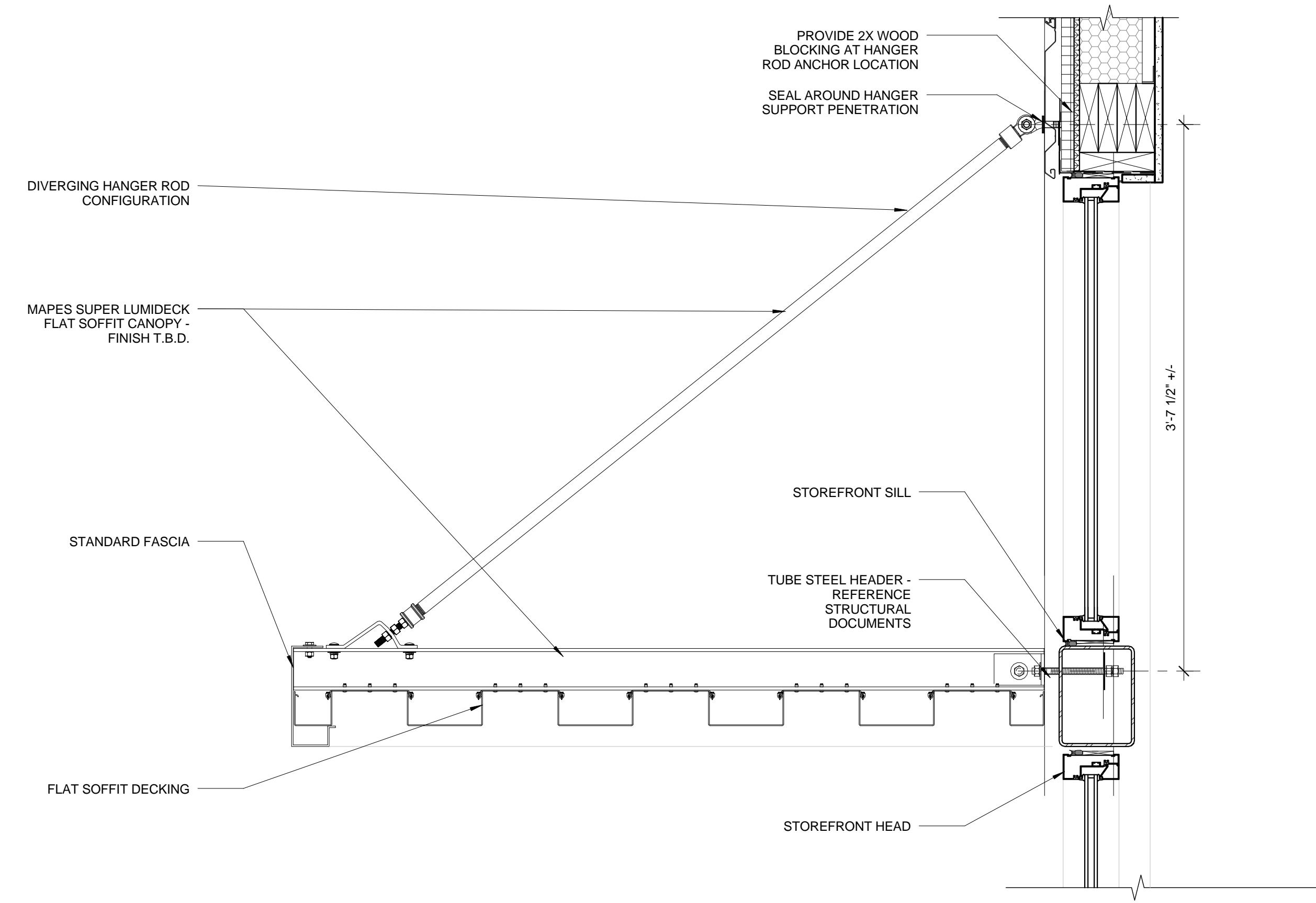


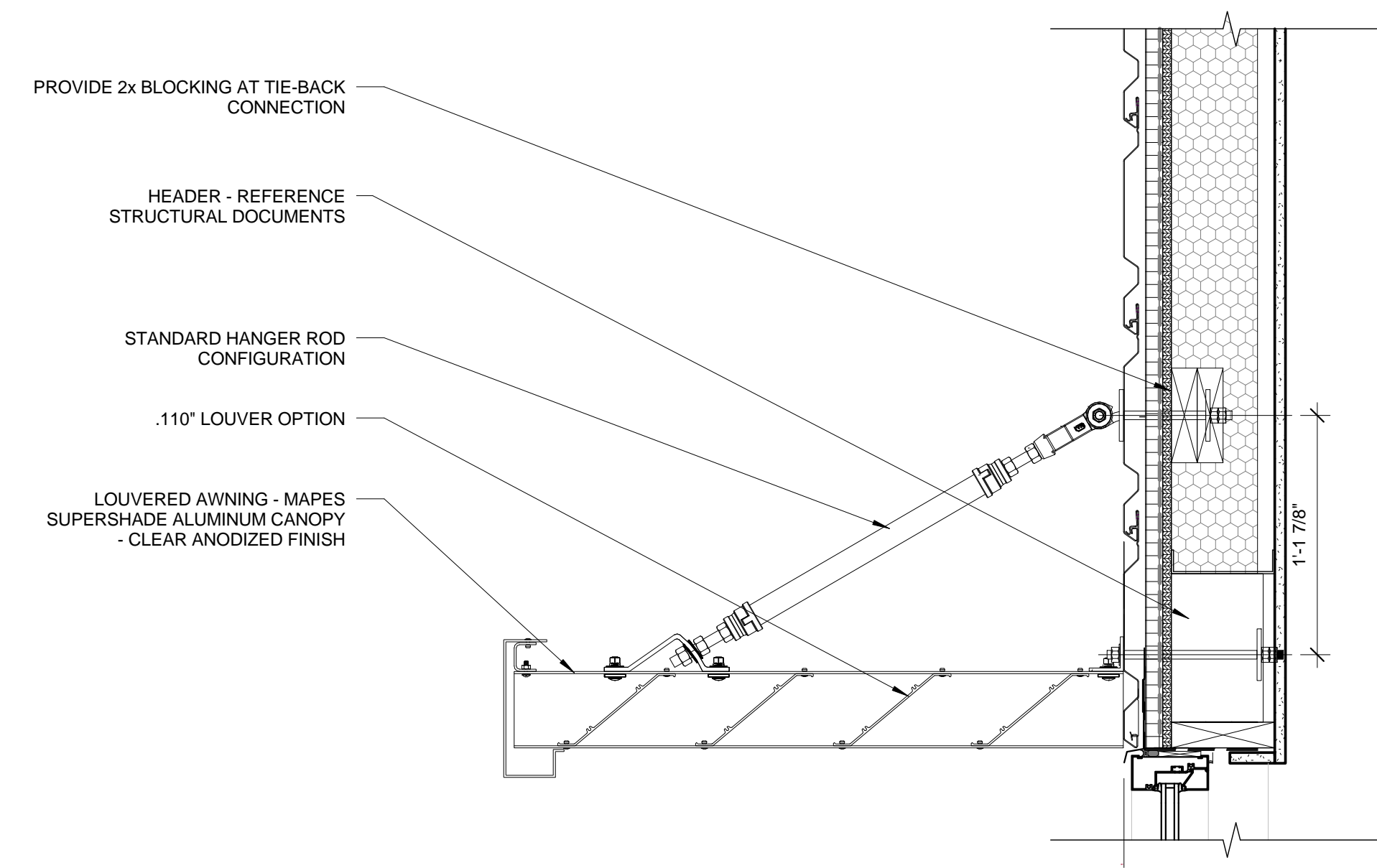
1 SECTION THROUGH BUILDING A ALTERNATING TREAD STAIR
1/2" = 1'-0"



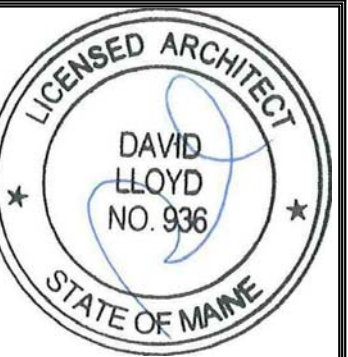
3 ALTERNATING TREAD STAIR SECTION - BUILDING B
1/2" = 1'-0"



2 CHIPOTLE AWNING DETAIL
1 1/2" = 1'-0"



4 AWNING DETAIL
1 1/2" = 1'-0"



Prepared For:

Consultant:

Architect: **ARCHETYPE architects**
48 Union Wharf Portland, Maine 04101
(207) 772-6022 ARCHETYPE@ARCHETYPEPA.COM

Project: Century Tire

Revisions:

Date: 03-16-2015
Scale: As indicated

DETAILS

A5.01