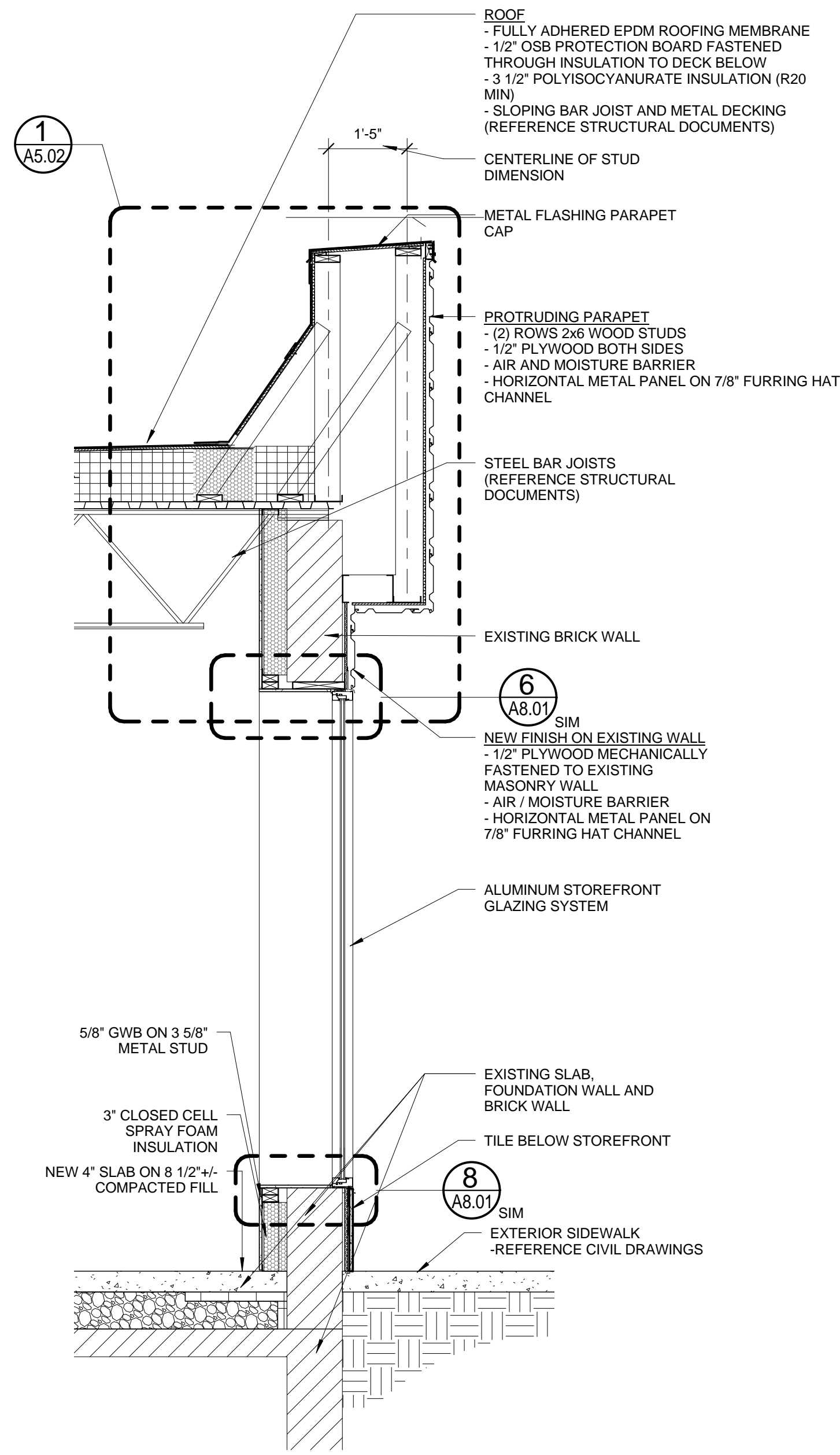
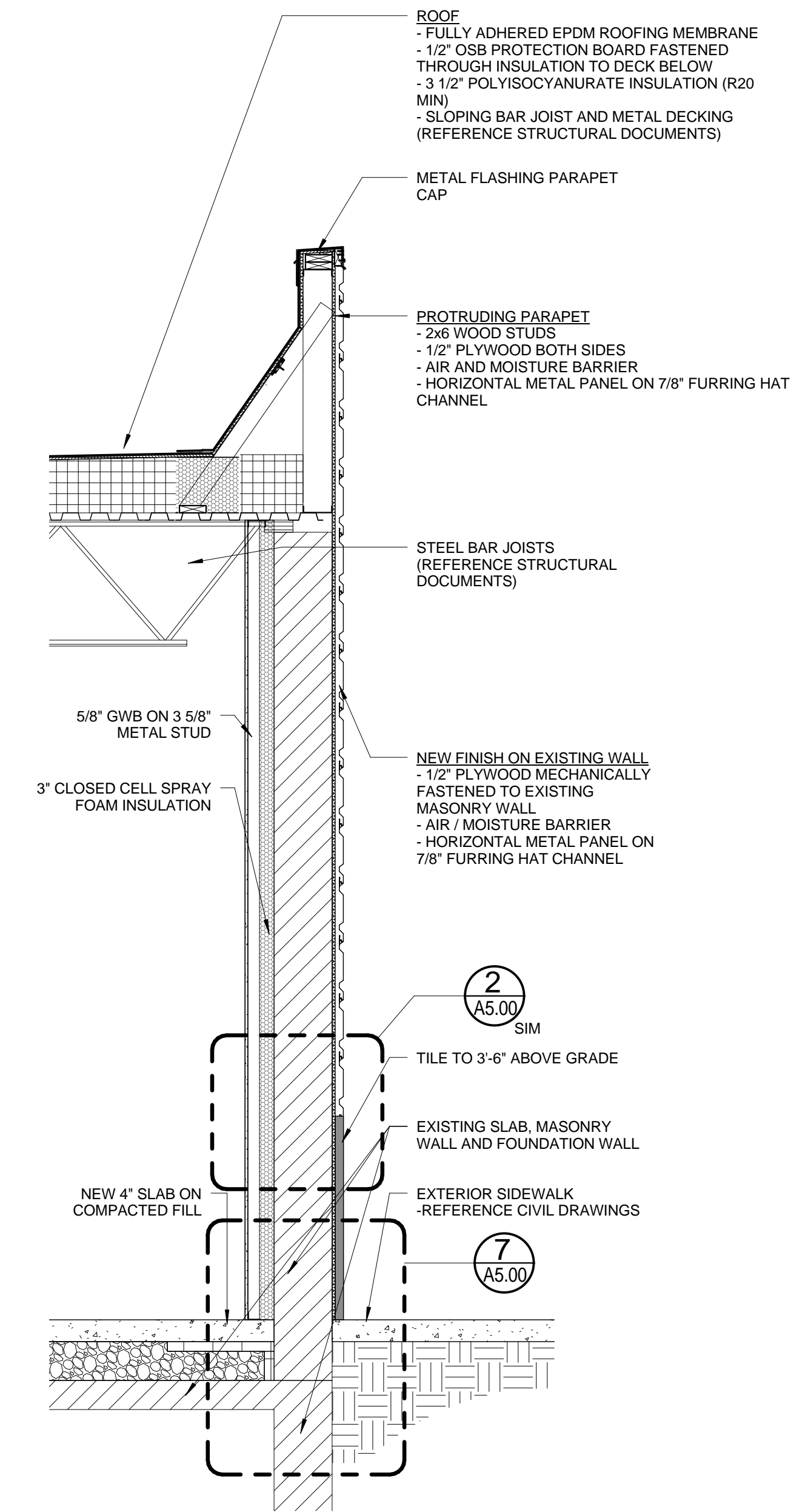


1 | WALL SECT. AT EXIST. MASONRY WALL AT STOREFRONT
1/2" = 1'-0"



2 | WALL SECT. AT EXIST. MASONRY WALL W/ PROJECTING PARAPET
1/2" = 1'-0"



3 | WALL SECTION AT EXIST. MASONRY WALL
1/2" = 1'-0"