

Prepared For:

Consultant:

ARCHITECT  
**ARCHETYPE**  
architects  
48 Union Wharf Portland, Maine 04101  
(207) 772-6022 ARCHETYPE@ARCHETYPEPA.COM

Project:  
Century Tire

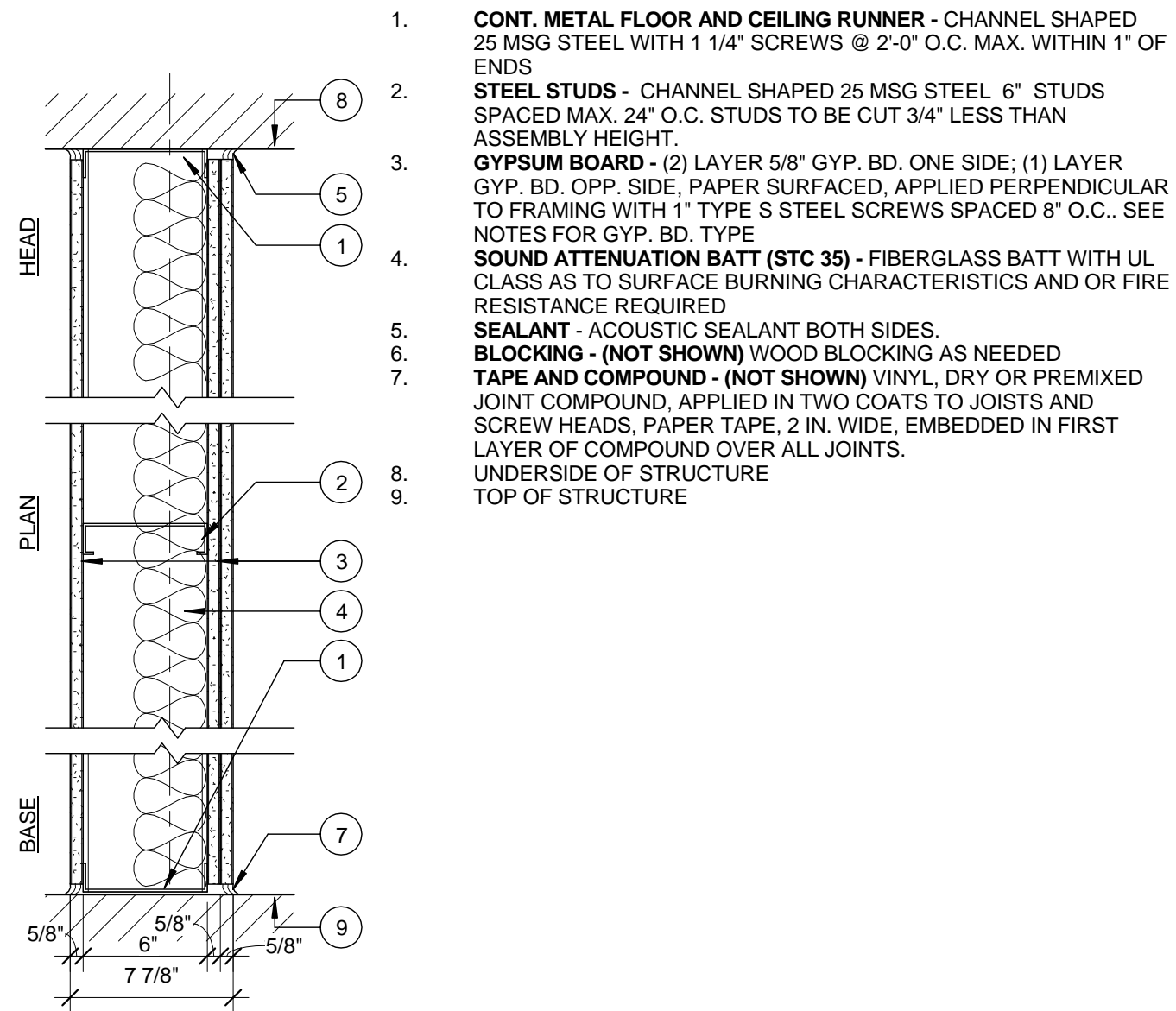
Revisions:

Scale: As indicated  
BUILDING B PLAN

Date: 03-16-2015

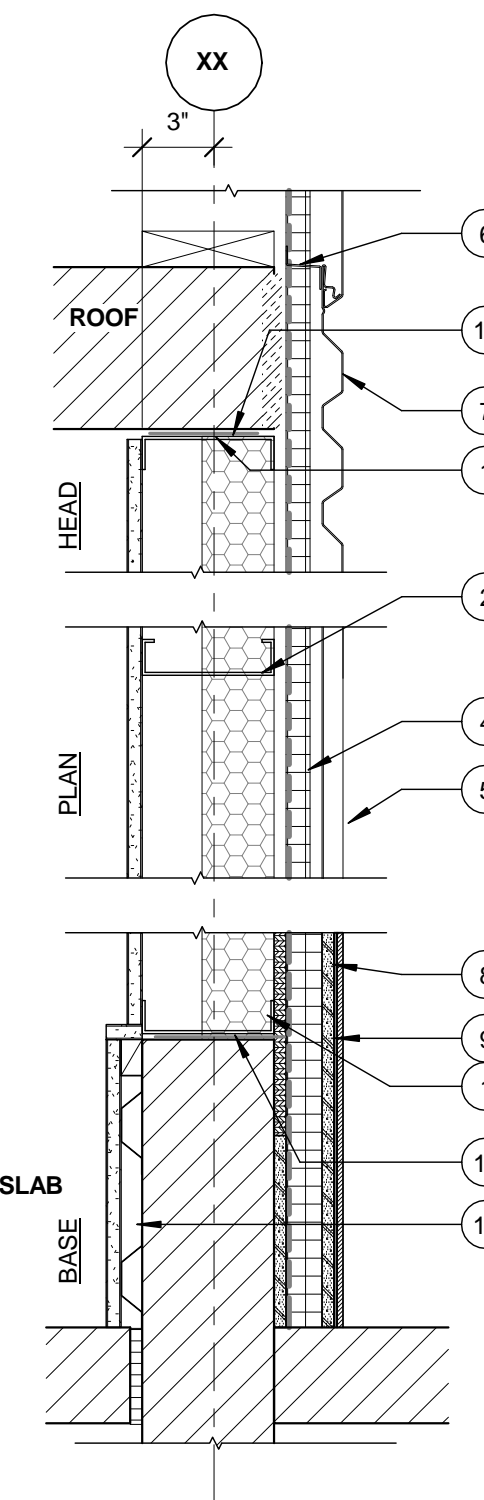
A1.02

**W01** NON-RATED NON-BEARING ACOUSTICAL PARTITION  
DESIGN NUMBER - N/A  
35 STC SOUND - RAL-TL-11-078



1. CONT. METAL FLOOR AND CEILING RUNNER - CHANNEL SHAPED 25 MSG STEEL WITH 1 1/4" SCREWS @ 2'-0" O.C. MAX. WITHIN 1" OF ENDS
2. STEEL STUDS - CHANNEL SHAPED 25 MSG STEEL 6" STUDS SPACED MAX. 24" O.C. STUDS TO BE CUT 3/4" LESS THAN ASSEMBLY HEIGHT.
3. GYPSUM BOARD - (2) LAYER 5/8" GYP. BD. ONE SIDE; (1) LAYER GYP. BD. OPP. SIDE, PAPER SURFACED, APPLIED PERPENDICULAR TO FRAMING WITH 1" TYPE S STEEL SCREWS SPACED 8" O.C. SEE NOTES FOR GYP. BD. TYPE
4. SOUND ATTENUATION BATT (STC 35) - FIBERGLASS BATT WITH UL CLASS AS TO SURFACE BURNING CHARACTERISTICS AND OR FIRE RESISTANCE REQUIRED
5. SEALANT - ACOUSTIC SEALANT BOTH SIDES.
6. BLOCKING - (NOT SHOWN) WOOD BLOCKING AS NEEDED
7. TAPE AND COMPOUND - (NOT SHOWN) VINYL DRY OR PREMIXED JOINT COMPOUND, APPLIED IN TWO COATS TO JOISTS AND SCREW HEADS, PAPER TAPE, 2 IN. WIDE, EMBEDDED IN FIRST LAYER OF COMPOUND OVER ALL JOINTS.
8. UNDERSIDE OF STRUCTURE
9. TOP OF STRUCTURE

**01** BEARING, NON RATED EXTERIOR WALL  
STC SOUND - N/A

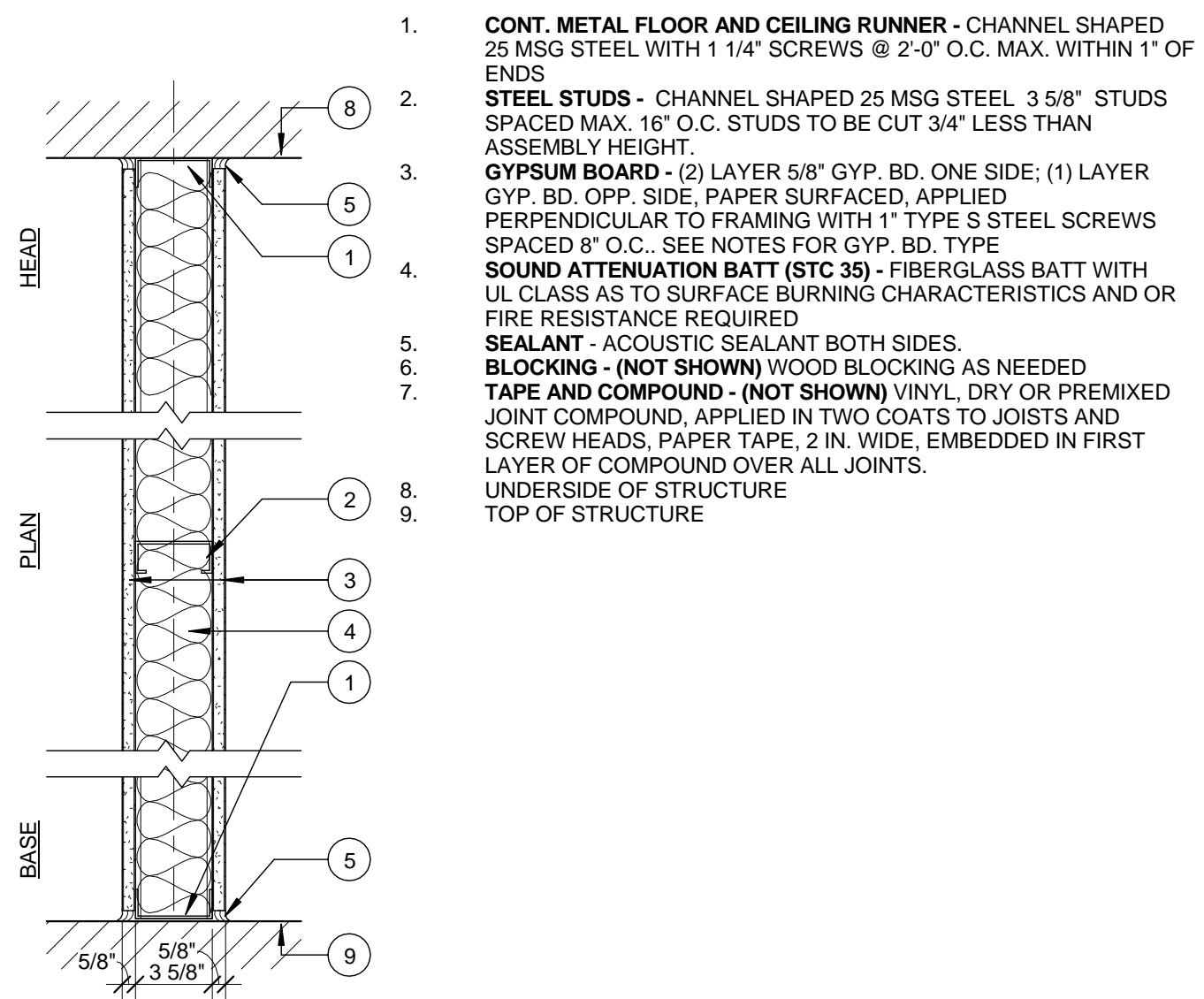


1. CONT. METAL FLOOR AND CEILING RUNNER - CHANNEL SHAPED 25 MSG STEEL WITH 1 1/4" SCREWS @ 2'-0" O.C. MAX. WITHIN 1" OF ENDS
2. STEEL STUDS - CHANNEL SHAPED 25 MSG 20 GA STEEL 6" STUDS SPACED MAX. 24" O.C. STUDS TO BE CUT 3/4" LESS THAN ASSEMBLY HEIGHT
3. SPRAY FOAM INSULATION - 3" CLOSED CELL SPRAY FOAM INSULATION
4. RIGID INSULATION - 1" XPS ADHERED TO 1/2" SHEATHING. MECHANICALLY FASTEN PANEL TO STUDS WITH 4" TRUEFAST SIP TP SCREWS HI-LOW TREATED W/ CLIMACOAT 6" O.C. ALONG THE PERIMETER OF THE PANEL AND 12" O.C. WITHIN THE FIELD OF THE PANEL.
5. AIR/MOISTURE BARRIER - REFER TO SPECIFICATION.
6. 1 1/2" Z" GIRT - INSTALLED AT PANEL HORIZONTAL EDGES AT 12" O.C. VERTICALLY
7. FIRESTONE DELTA UNA-CLAD METAL PANEL - EXTERIOR CLADDING SYSTEM - REFER TO SPECIFICATION
8. BOND COAT FOR SETTING TILE - LATEX MODIFIED PORTLAND CEMENT MORTAR APPLIED WITH A NOTCHED TROWEL
9. 12" X 12" DALITILE COLORBODY PORCELAIN TILE
10. GYPSUM BOARD - (1) LAYER 5/8" GYP. BD. PAPER SURFACED, APPLIED PERPENDICULAR TO FRAMING WITH 1" TYPE S STEEL SCREWS SPACED 8" O.C. SEE NOTES FOR GYP. BD. TYPE
11. BED OF SEALANT - MTL TRACKS IN CONTACT WITH CONCRETE TO BE SET IN A FULL BED OF SEALANT. SEAL OTHER TRACKS TO DECK.

SEE EXT. DETAILS FOR THRU FLASHING, ACCESSORIES, AND DETAILS

**2** WALL TYPE W01 - NON RATED - ACOUST. PART.  
1 1/2" = 1'-0"

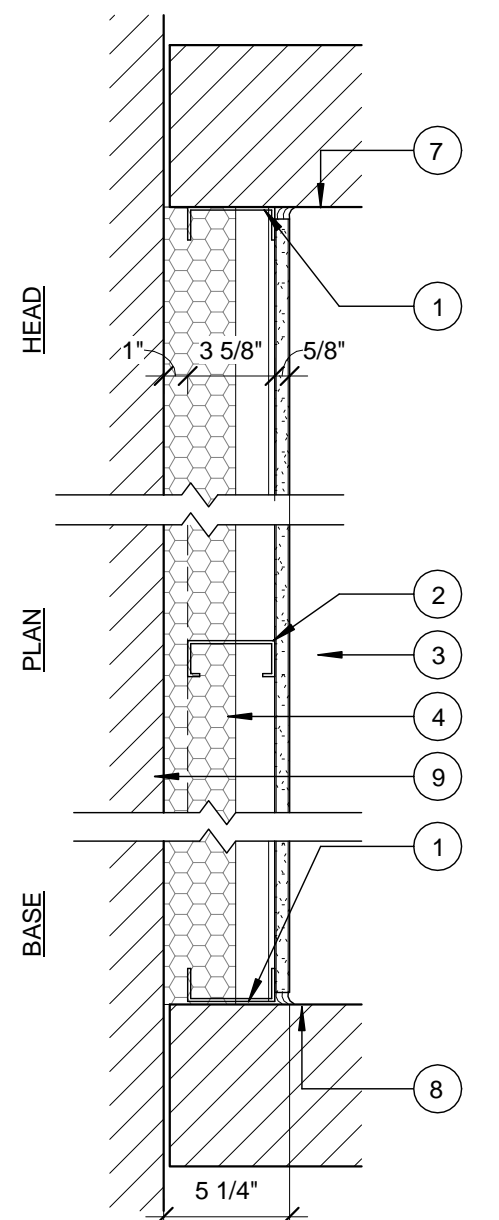
**W02** NON-RATED NON-BEARING PARTITION  
DESIGN NUMBER - N/A  
35 STC SOUND - RAL-TL-11-078



1. CONT. METAL FLOOR AND CEILING RUNNER - CHANNEL SHAPED 25 MSG STEEL WITH 1 1/4" SCREWS @ 2'-0" O.C. MAX. WITHIN 1" OF ENDS
2. STEEL STUDS - CHANNEL SHAPED 25 MSG STEEL 3 5/8" STUDS SPACED MAX. 16" O.C. STUDS TO BE CUT 3/4" LESS THAN ASSEMBLY HEIGHT.
3. GYPSUM BOARD - (2) LAYER 5/8" GYP. BD. ONE SIDE; (1) LAYER GYP. BD. OPP. SIDE, PAPER SURFACED, APPLIED PERPENDICULAR TO FRAMING WITH 1" TYPE S STEEL SCREWS SPACED 8" O.C. SEE NOTES FOR GYP. BD. TYPE
4. SOUND ATTENUATION BATT (STC 35) - FIBERGLASS BATT WITH UL CLASS AS TO SURFACE BURNING CHARACTERISTICS AND OR FIRE RESISTANCE REQUIRED
5. SEALANT - ACOUSTIC SEALANT BOTH SIDES.
6. BLOCKING - (NOT SHOWN) WOOD BLOCKING AS NEEDED
7. TAPE AND COMPOUND - (NOT SHOWN) VINYL DRY OR PREMIXED JOINT COMPOUND, APPLIED IN TWO COATS TO JOISTS AND SCREW HEADS, PAPER TAPE, 2 IN. WIDE, EMBEDDED IN FIRST LAYER OF COMPOUND OVER ALL JOINTS.
8. UNDERSIDE OF STRUCTURE
9. TOP OF STRUCTURE

**3** WALL TYPE W02 - NON RATED - ACOUST. PART.  
1 1/2" = 1'-0"

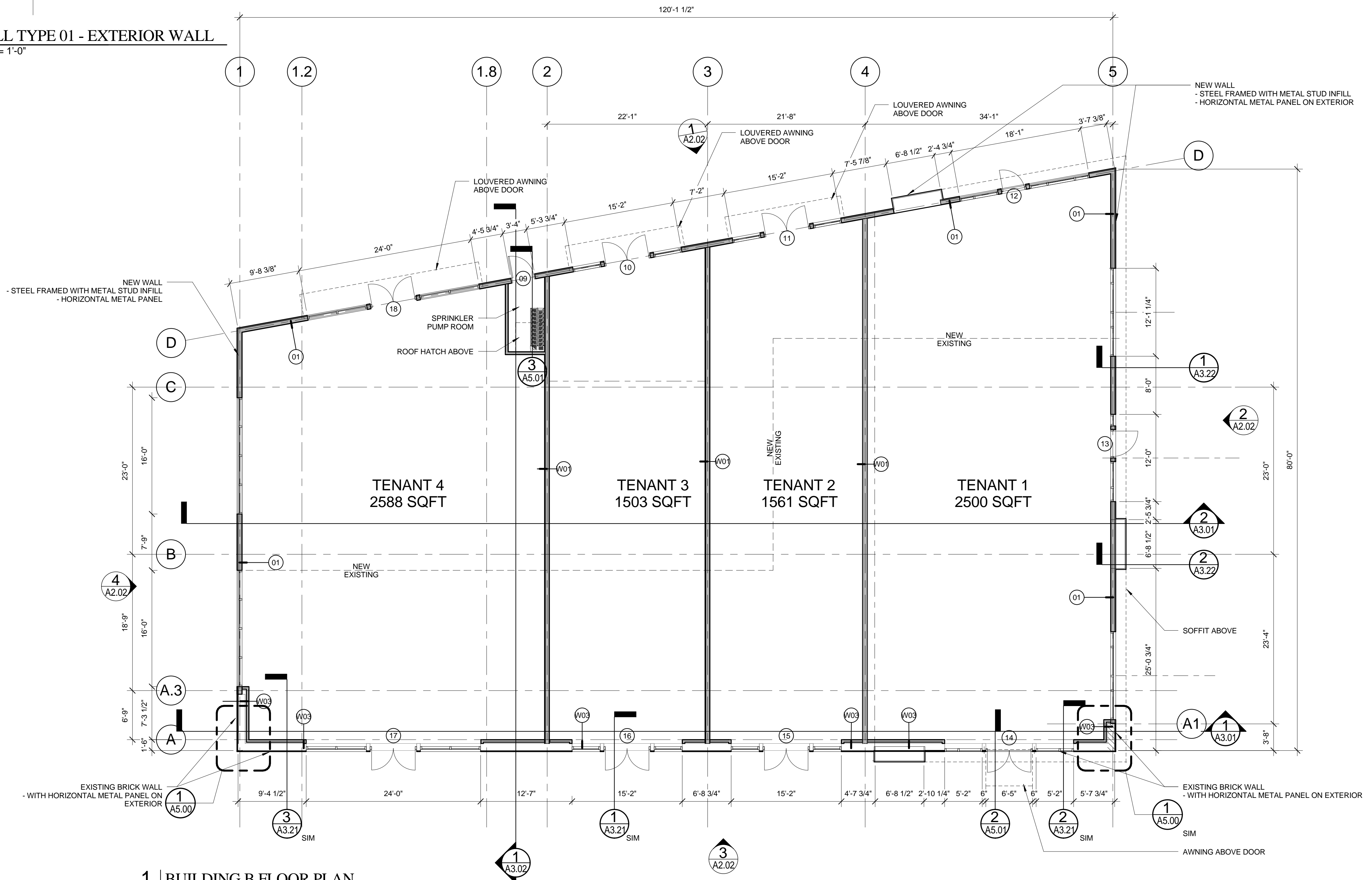
**W03** NON-RATED NON-BEARING EXTERIOR WALL FURRING



1. CONT. METAL FLOOR AND CEILING RUNNER - CHANNEL SHAPED 25 MSG STEEL WITH 1 1/4" LONG SCREWS @ 2'-0" O.C. MAX. WITHIN 1" OF ENDS
2. STEEL STUDS - CHANNEL SHAPED 25 MSG STEEL 3 5/8" STUDS SPACED MAX. 16" O.C. STUDS TO BE CUT 3/4" LESS THAN ASSEMBLY HEIGHT.
3. GYPSUM BOARD - (1) LAYER 5/8" GYP. BD., PAPER SURFACED MOISTURE RESISTANT, APPLIED PERPENDICULAR TO FRAMING WITH 1" TYPE S STEEL SCREWS SPACED 8" O.C.
4. SPRAY FOAM INSULATION - 3" CLOSED CELL POLYURETHANE SPRAY INSULATION
5. BLOCKING - (NOT SHOWN) WOOD BLOCKING AS NEEDED
6. TAPE AND COMPOUND - (NOT SHOWN) VINYL DRY OR PREMIXED JOINT COMPOUND, APPLIED IN TWO COATS TO JOISTS AND SCREW HEADS, PAPER TAPE, 2 IN. WIDE, EMBEDDED IN FIRST LAYER OF COMPOUND OVER ALL JOINTS.
7. UNDERSIDE OF STRUCTURE
8. TOP OF STRUCTURE
9. EXISTING MASONRY WALL

**4** WALL TYPE W03 - MTL FUR - INSL - 6 3/8"  
1 1/2" = 1'-0"

**5** WALL TYPE 01 - EXTERIOR WALL  
1 1/2" = 1'-0"



**1** BUILDING B FLOOR PLAN  
1/8" = 1'-0"