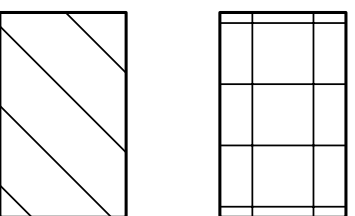


ACT1 - ACOUSTICAL CEILING SYSTEM  
 TILE: #1275 DUNE BEADED REGULAR EDGE, FINE TEXTURE  
 SUSPENSION: SUPRAME 3/4" x 7/8" WHITE

EXISTING CONDITIONS TO REMAIN



**P1 LEGEND**

REFLECTED CEILING PLAN

- ☒ FLUORESCENT 2X2  
 MANUFACTURER: LIGHTOLIER  
 PRODUCT: ALTER CLASS 2X2 RECESSED  
 PRODUCT INFORMATION: BASIC WHITE REFLECTOR TRIM  
 2 LAMP, PERFORATED SHIELD
- DOWNLIGHT - INTERIOR  
 MANUFACTURER: LIGHTOLIER  
 PRODUCT: INTERIOR FLUORESCENT CAN  
 PRODUCT INFORMATION: BASIC WHITE REFLECTOR TRIM
- DECORATIVE SMALL PENDANT (AT RECEPTION)  
 MANUFACTURER: P.L.C LIGHTING  
 PRODUCT NUMBER: 424-GRN/WH  
 DIMENSIONS: 3.25" D  
 COORD. OPTION: BLACK  
 APPLICATION: INTERIOR ONLY
- WALL WASHER  
 6" FLUORESCENT, WET LOCATION RATED FOR SHOWERS.
- EXIT EXIT EXIT EXIT  
 EXIT SIGN, LOCATE PER LIFE SAFETY
- EXIT EXIT  
 DIRECTIONAL EXIT SIGN, LOCATE PER LIFE SAFETY
- EXIT EXIT  
 HORN/STROBE, DESIGN BUILD-LOCATE PER NFPA
- EXIT  
 STROBE, DESIGN BUILD - LOCATE PER NFPA
- EXIT  
 EMERGENCY LIGHTS, DESIGN BUILD - PER NFPA

**K1 FUTURE LEGEND**

REFLECTED CEILING PLAN

**K5 TRANSITION DETAILS**

FLOORING, WALL BASE TRANSITION

TR1	CARPET TO TILE	TR2	CARPET TO CARPET	TR3	CARPET TO CARPET
TR4	RESISTANT TO RESISTANT	TR5	CARPET TO TILE	TR6	CARPET TO CARPET
TR7	WOOD BASE TO WOOD BASE	TR8	RESISTANT TO RESISTANT	TR9	WOOD USED

- NEW WALLS
- ▨ EXISTING WALLS AT TENANT SPACE TO REMAIN
- ▬ EXISTING WALLS AT COMMON AREAS TO REMAIN

**O11 LEGEND**

FLOOR PLAN

- INTERIOR FIXTURE LEGEND FOR DESIGN INTENT ONLY. REFER TO DESIGN BUILD ELECTRICAL DRAWINGS FOR CIRCUITING.
- MECHANICAL SUBCONTRACTOR TO VERIFY SIZE AND LOCATION OF ANY MECHANICAL REGISTERS WITH DESIGNER PRIOR TO CONSTRUCTION. LIGHTING LOCATIONS SHALL TAKE PRECEDENCE.
- FIXTURES SHALL BE CENTERED ON ACOUSTICAL CEILING TILE UNLESS OTHERWISE NOTED.
- COORDINATE LOCATIONS OF MECHANICAL GRILLES AND EQUIPMENT, SMOKE DETECTORS, AUDIO SPEAKERS, SPRINKLER HEADS AND LIFE SAFETY EQUIPMENT WITH ACOUSTICAL CEILING SYSTEM AND LIGHT FIXTURES.
- PROVIDE HARDWARE CONNECTIONS TO OWNER SUPPLIED WORKSTATIONS. COORDINATE REQUIREMENTS WITH DESIGNER AND FURNITURE DEALER.

**K11 NOTES**

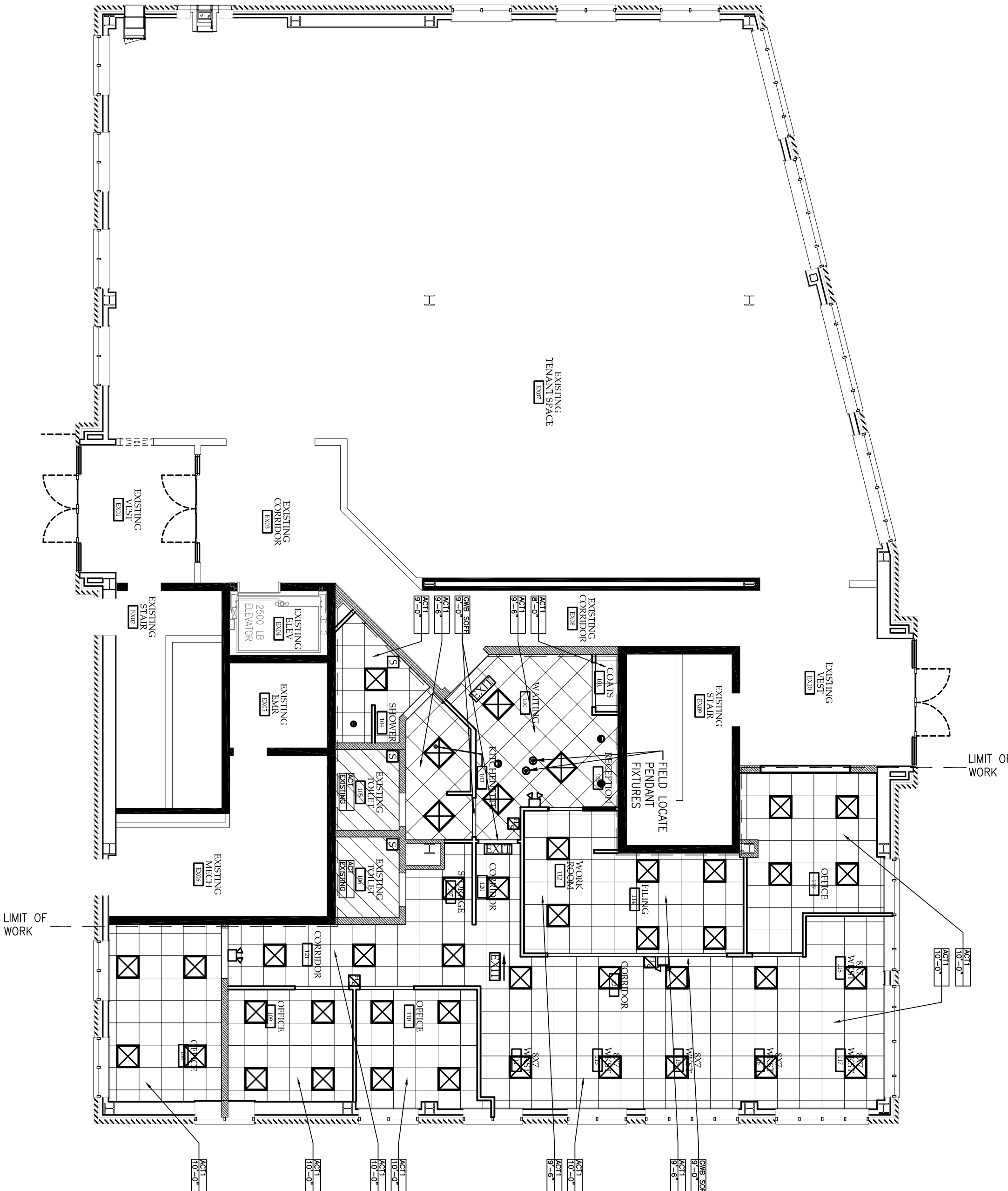
REFLECTED CEILING PLAN

**K16 NOTES**

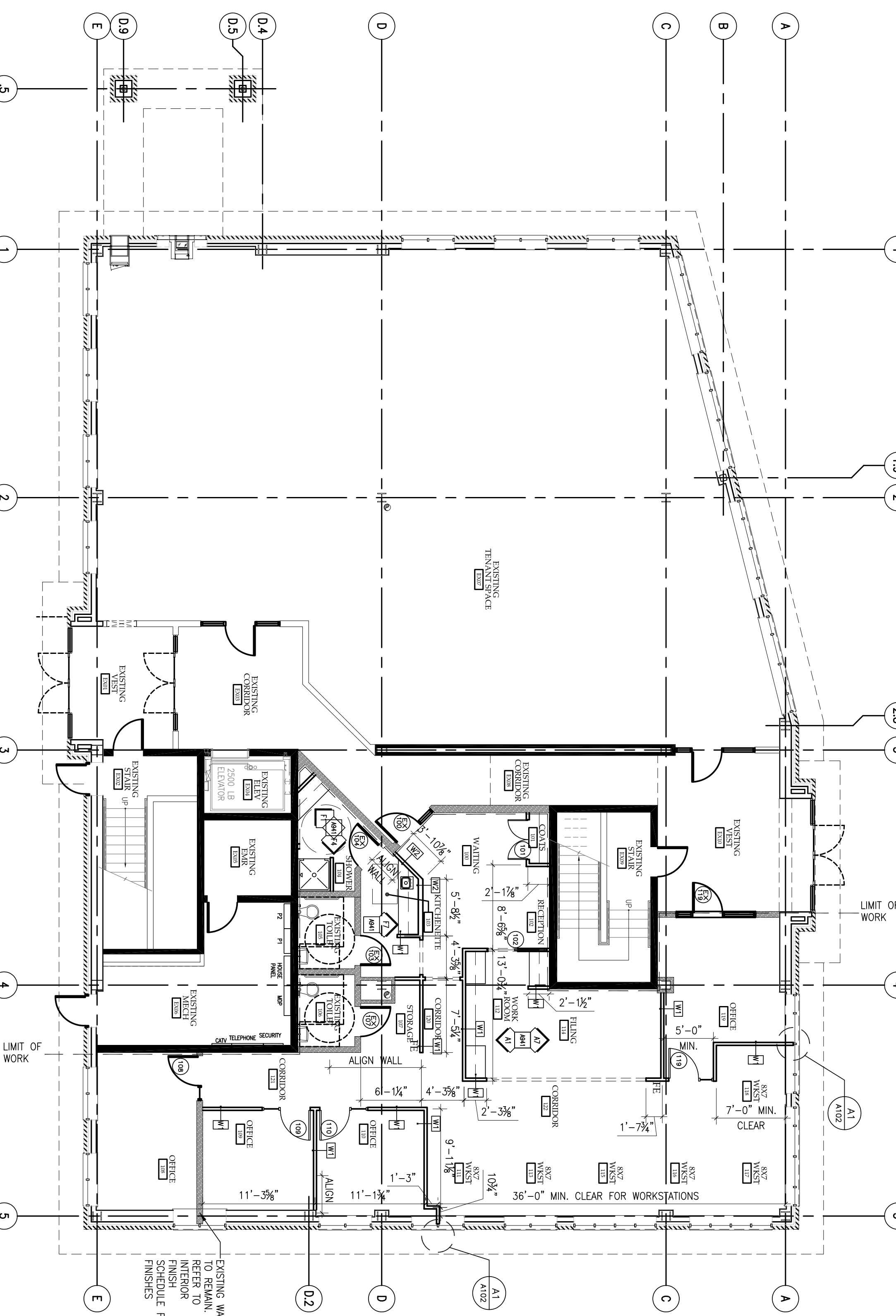
FLOOR PLAN

- PROVIDE SIGNAGE TO COMPLY WITH ADA REQUIREMENTS, INCLUDING BUT NOT LIMITED TO, EGRESS DOORS AND ADA TOILET(S).
- NEW INTERIOR DOORS SHALL BE PROVIDED AT ALL LOCATIONS. REFER TO E16/A102.
- REMOVE EXISTING JANITOR SLOP SINK AND INSTALL A NEW SHOWER UNIT: MANUFACTURER: AQUARIUS BATHWARE, MODEL NO.: C3600BF, DESCRIPTION: GEL-COATED, ONE-PIECE, ADA TRANSFER SHOWER, DIMENSIONS: 39" X 39 3/4" X 78 1/2" COLOR: WHITE.
- PROVIDE APPLIED TRIM/MOULDINGS AT ALL DOORS. REFER TO K9/A102.
- REFER TO INTERIOR DESIGN LEGEND AND SCHEDULE FOR INTERIOR FINISHES.
- CONTRACTORS SHALL COORDINATE ALL ASSOCIATED SYSTEMS WITH TENANT SUPPLIED SYSTEMS FURNITURE.
- PROVIDE A STAINLESS STEEL BAR SINK WITH ADA LEVER HANDLES AND GOOSENECK FAUCET (SIDE MOUNTED), FAUCET AND LEVELS SHALL BE BRUSHED CHROME.
- PROVIDE CASD OPENINGS AND APPLY TRIM/MOULDINGS. REFER TO K9/A102-D111.
- PROVIDE WIRE SHELF WITH INTEGRAL HANGING AT COATS 101. INSTALL AT 5'-0" A.F.F.
- PROVIDE TWO CLOTHES HOOKS AT SHOWER. INSTALL ONE (1) AT 5'-0" A.F.F. AND ONE (1) AT 4'-6" A.F.F. MANUFACTURER: BOBBICK, CLOTHES HOOK B-233, SATIN STAINLESS STEEL FINISH
- EXISTING TOILET 105 AND 106 FIXTURES SHALL REMAIN. PROVIDE NEW FINISHES AS NOTED IN THE INTERIOR FINISH SCHEDULE.
- EXISTING WOOD WINDOW SILLS TO REMAIN
- FE - INDICATES FIRE EXTINGUISHERS ON PLAN.

**A1 REFLECTED CEILING PLAN**



**A10 FLOOR PLAN**



**GAWRON TURGEON ARCHITECTS**  
 29 Black Point Road  
 Scarborough, ME 04074  
 www.gawronturgeon.com  
 Tel: 207.883.6307  
 Fax: 207.883.0361



**GROUND FLOOR - MAIN OFFICE**  
 63 MARGINAL WAY PORTLAND, MAINE

**REVISIONS**

#	DATE	DESCRIPTION
01	02/14/07	FRINGING DOCUMENTS
02	02/20/07	STATE CODE ANNOTATED

**SHEET TITLE**

FLOOR PLAN, REFLECTED CEILING PLAN AND NOTES

**A101**

DATE: 02/14/07  
 PROJECT #: 120106  
 DRAWN BY: LAP  
 CHECKED BY: MET  
 DRAWING SCALE: AS NOTED

© COPYRIGHT 1985-2006  
 TURNER BARKER INSURANCE  
 1000 BROADWAY, PORTLAND, ME 04102