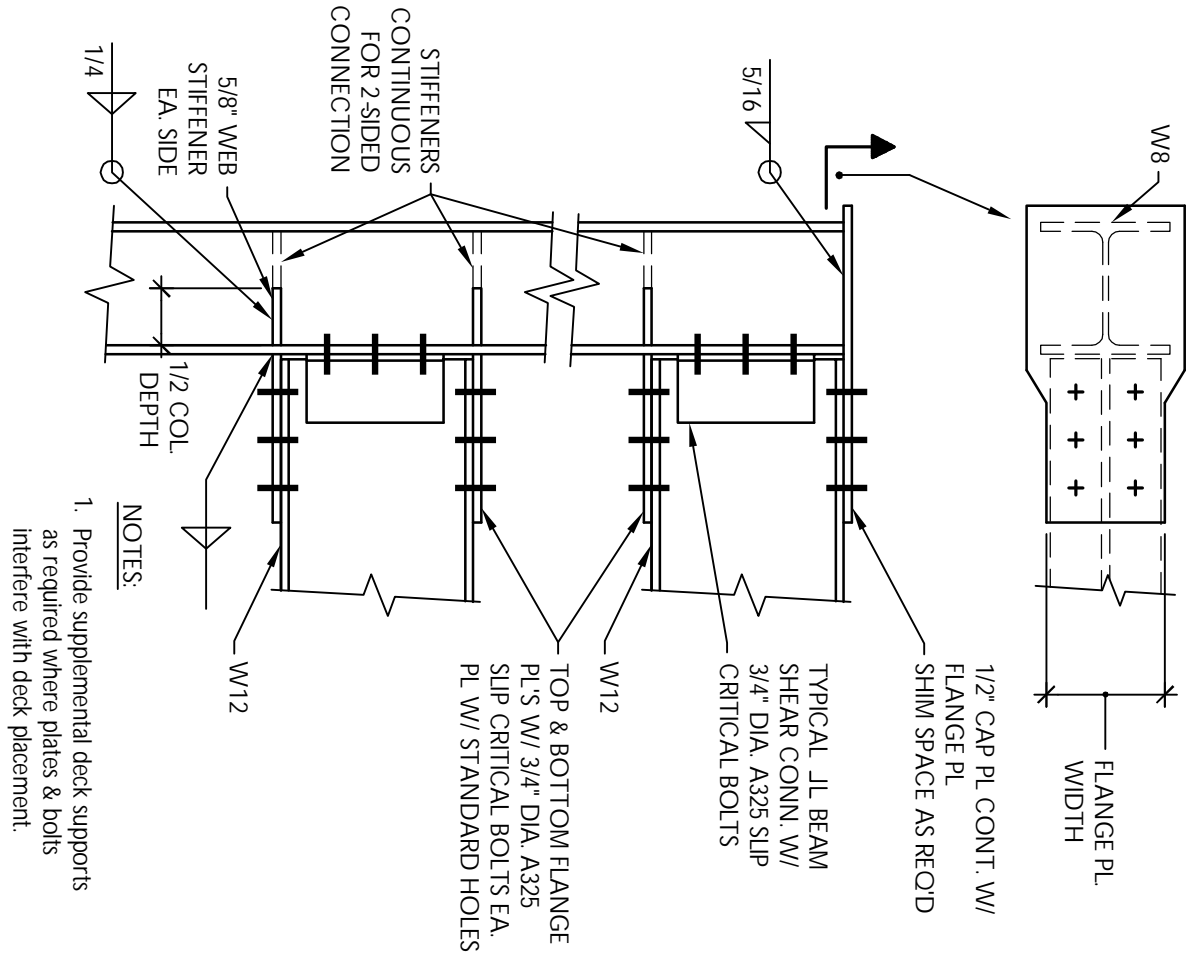
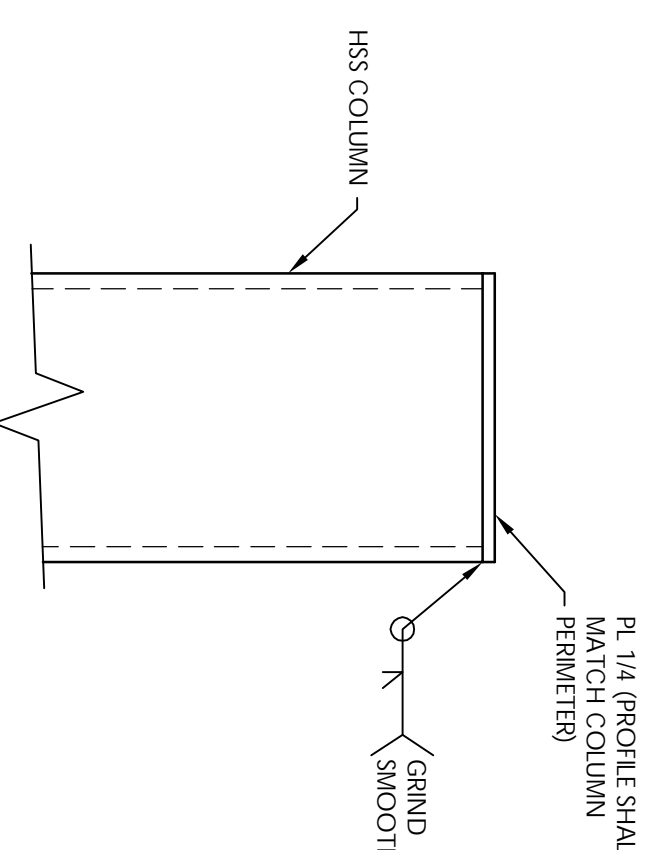


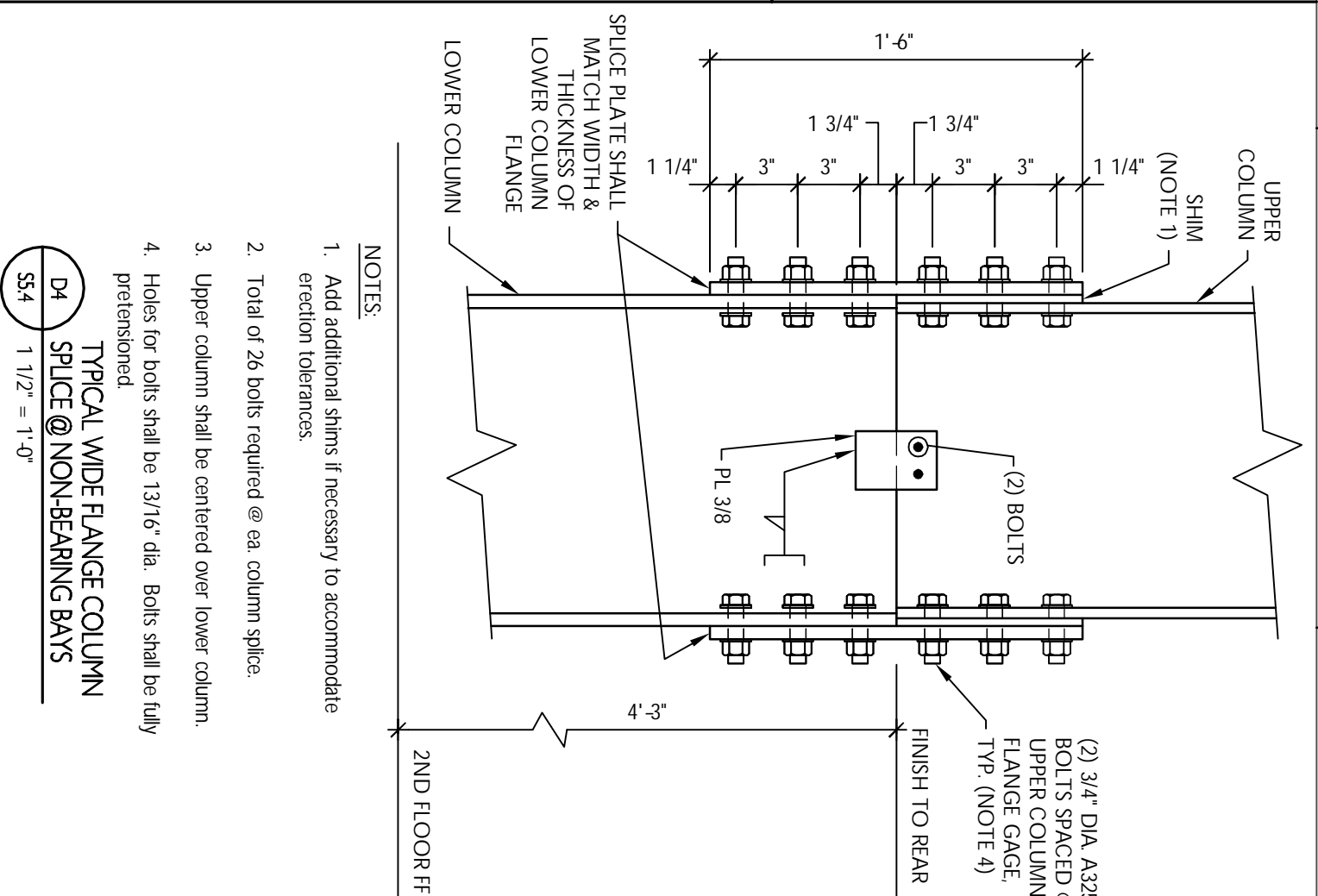
PRELIMINARY
NOT FOR CONSTRUCTION
 UNDER NO CIRCUMSTANCES
 SHALL THIS DRAWING BE USED
 TO DEVELOP SHOP DRAWINGS
 OR FABRICATE NEW MATERIALS.



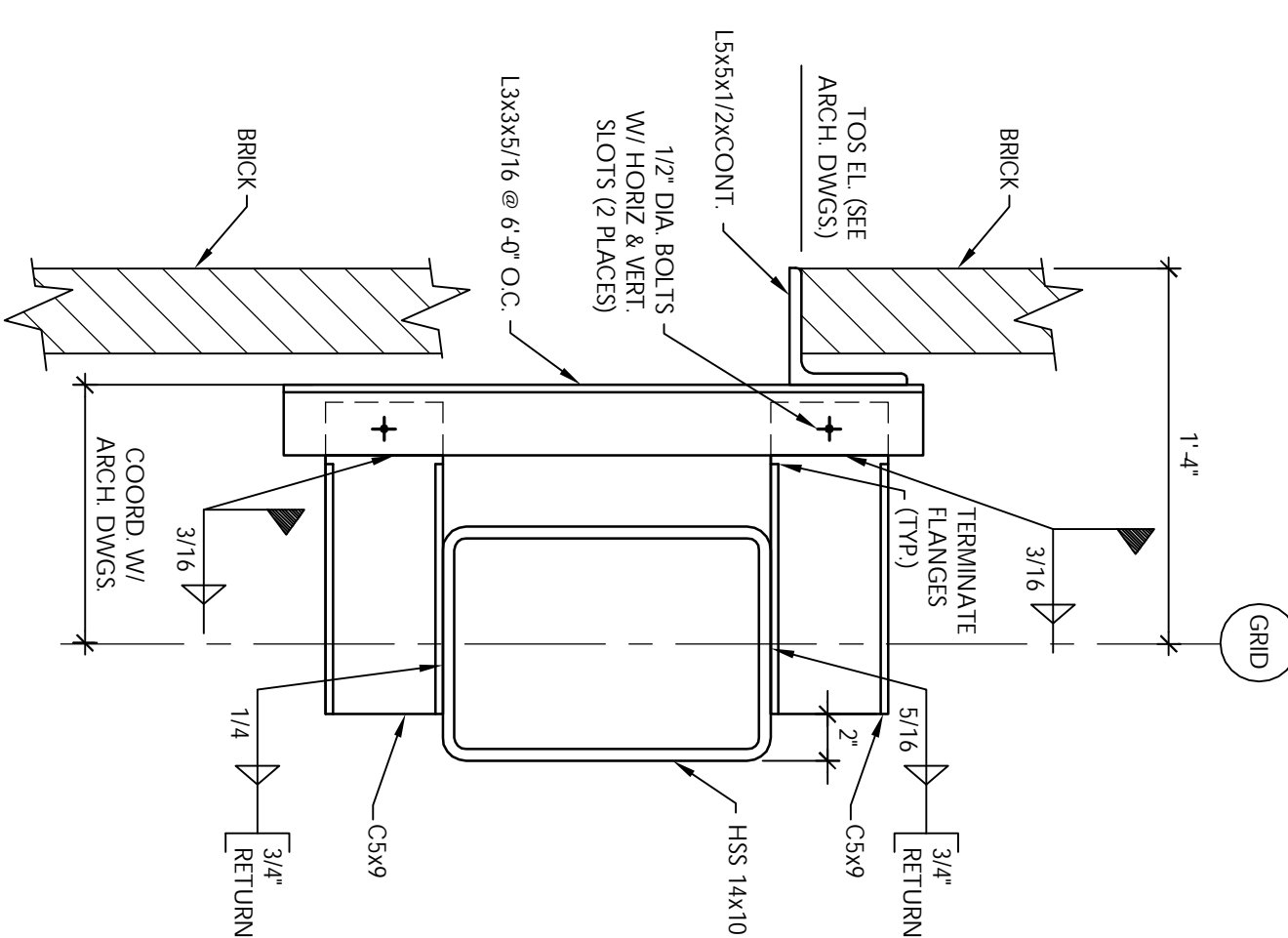
D1 TYPICAL FLANGE MOMENT CONNECTION @ PENTHOUSE
 S54 T = 1'-0"



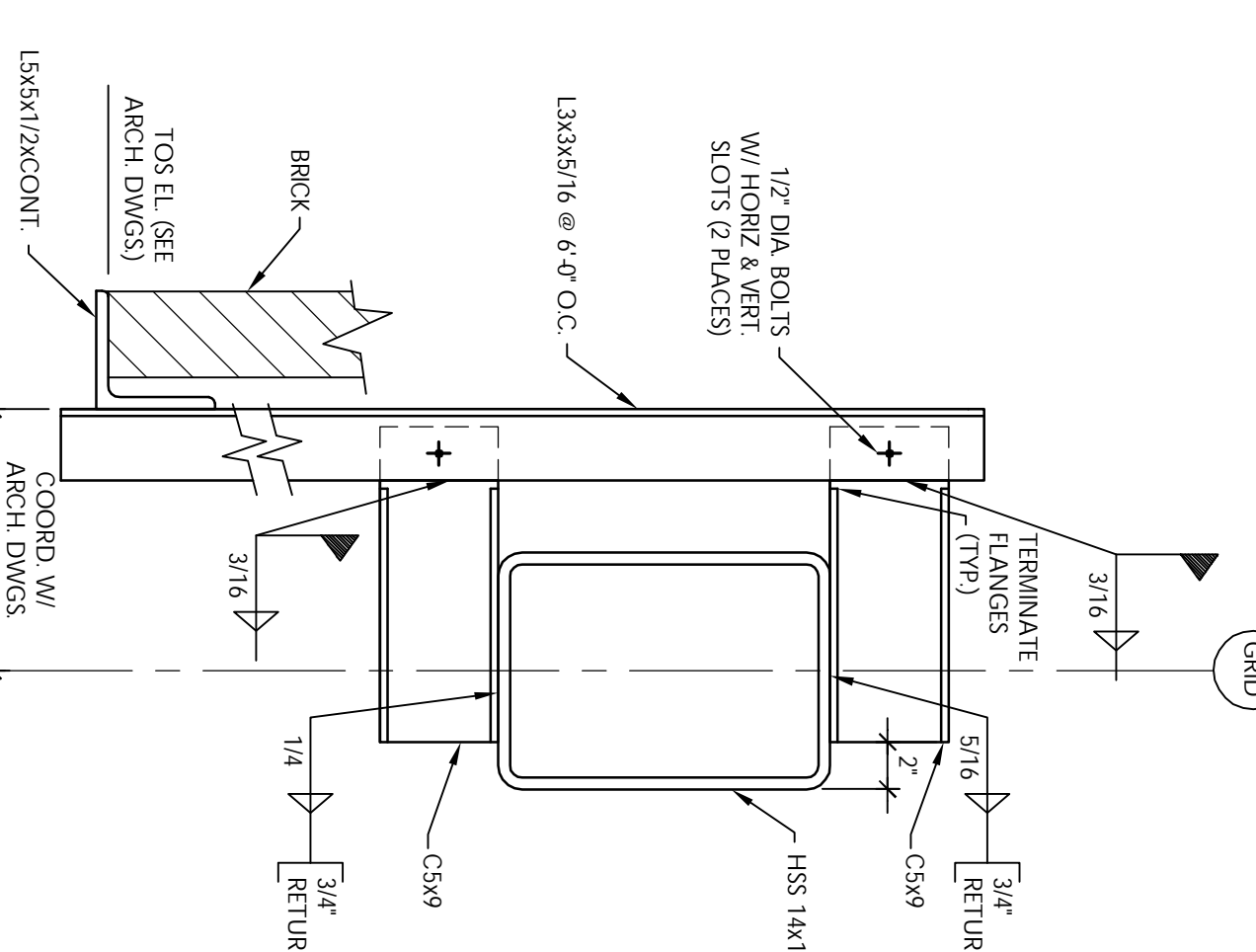
D2 TYPICAL HSS COLUMN CAP PLATE
 S54 T = 1'-0"



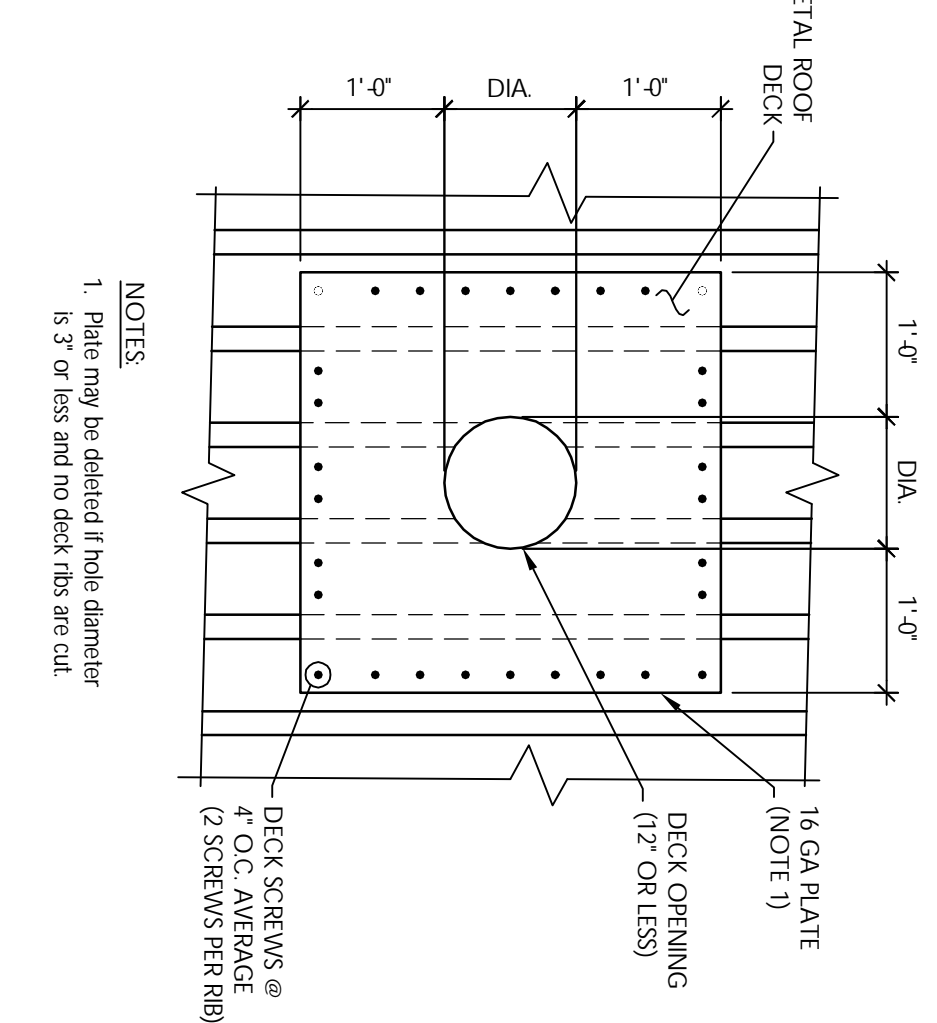
D3 TYPICAL WIDE FLANGE COLUMN SPLICING @ NON-BEARING BAYS
 S54 T = 1'-0"



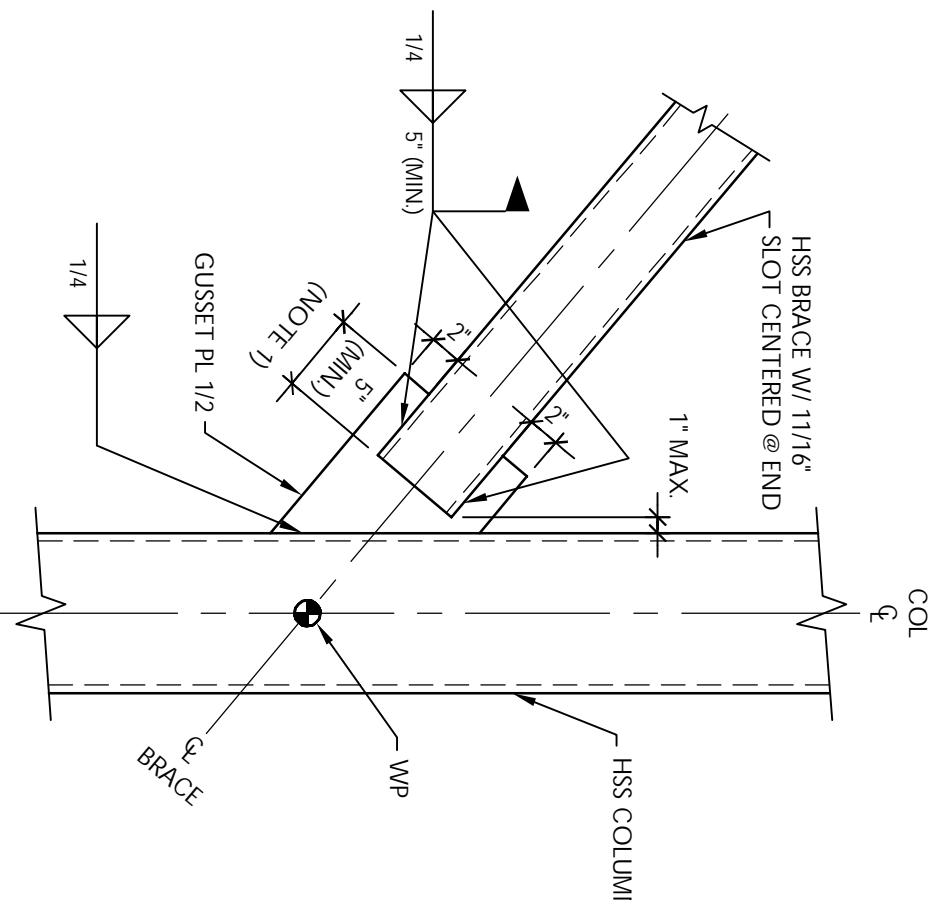
D6 SECTION
 S54 T = 1'-0"



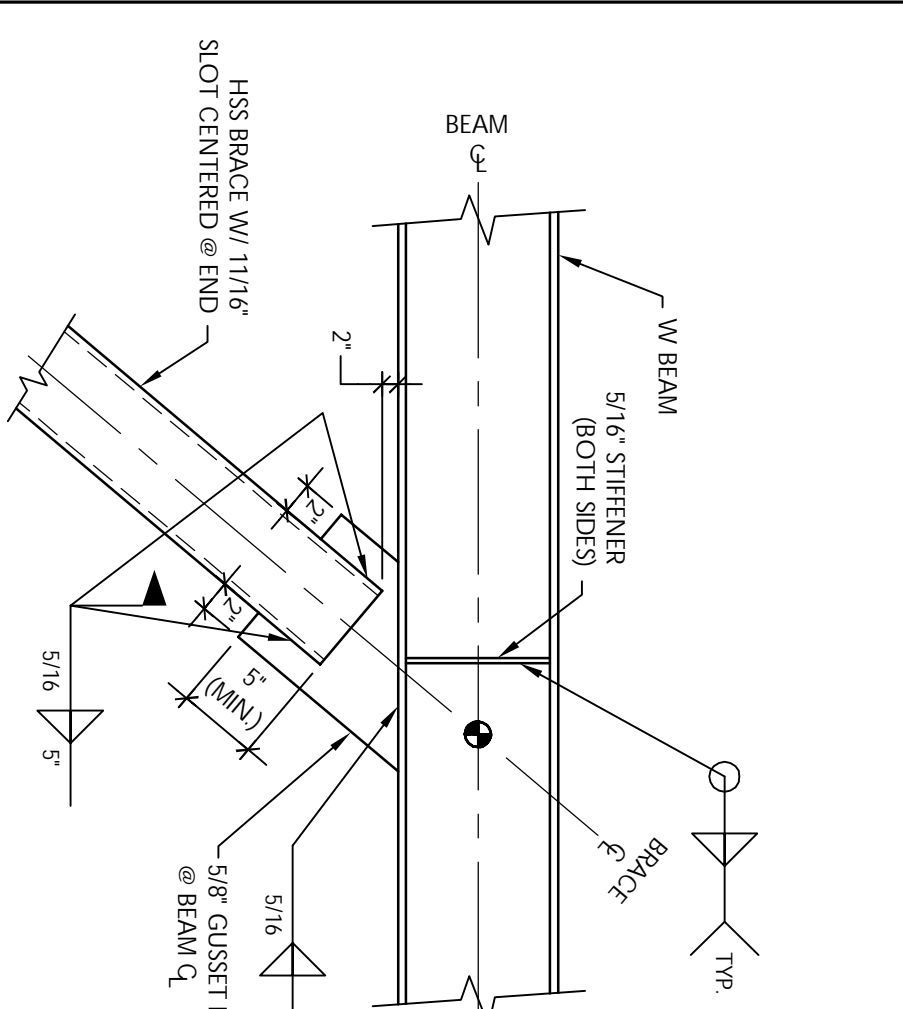
D9 SECTION
 S54 T = 1'-0"



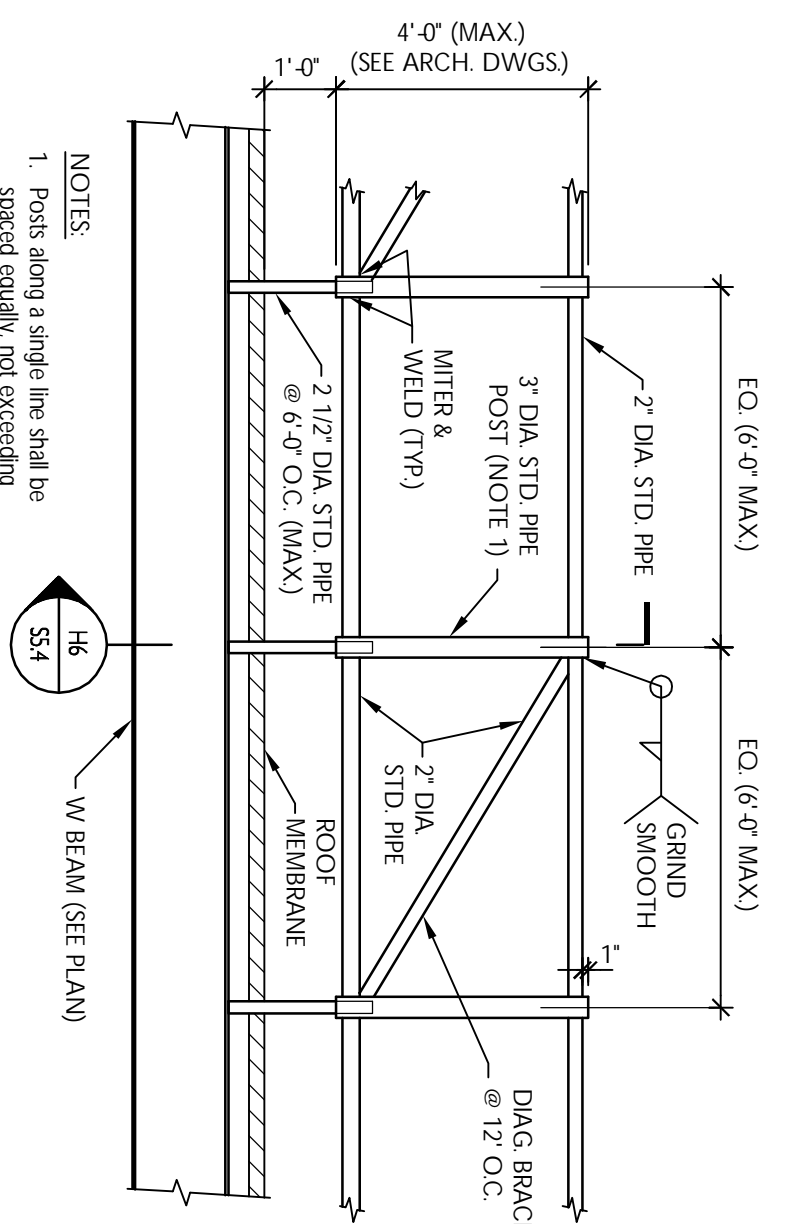
F1 TYPICAL REINFORCEMENT @ 1/2 INCH ROOF DECK OPENING
 S54 NTS



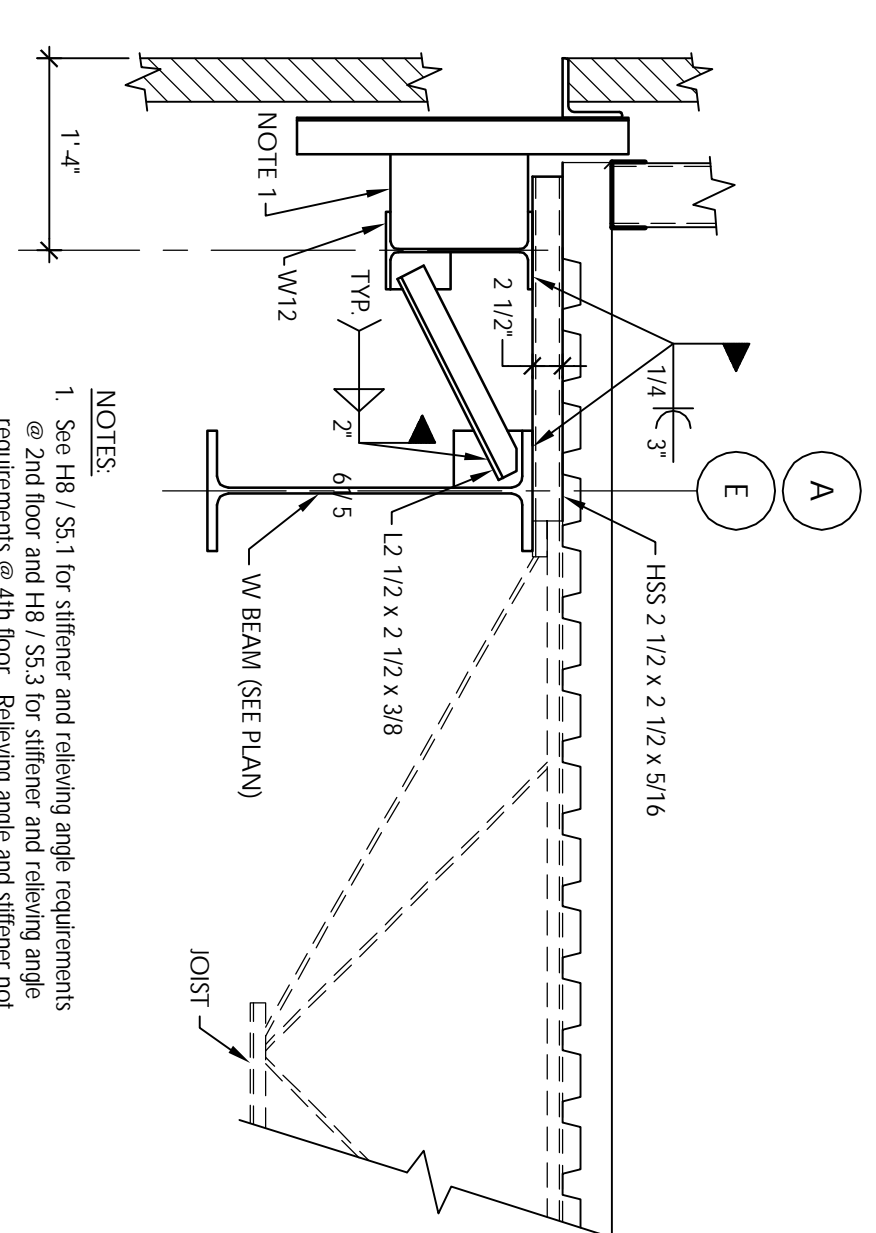
F3 DETAIL
 S54 T = 1'-0"



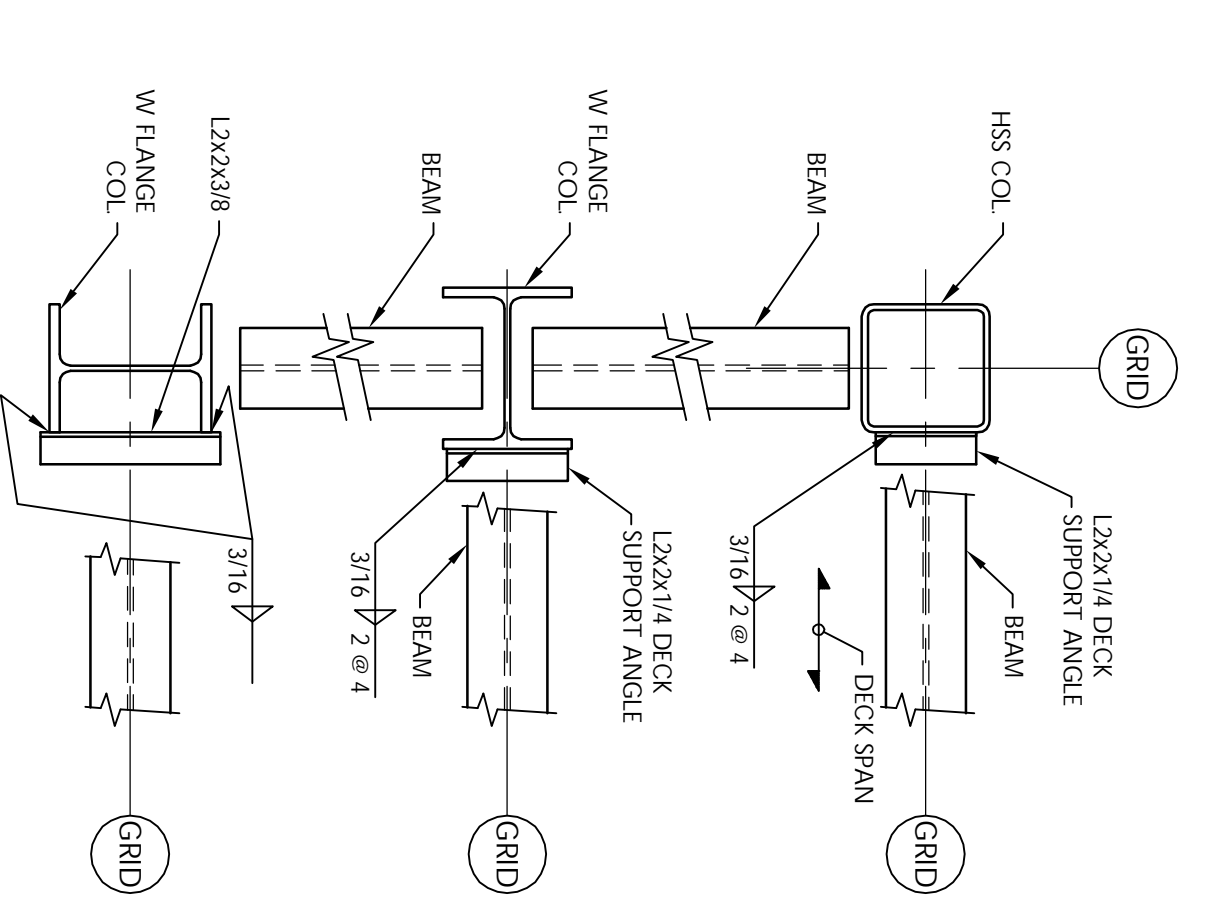
F4 DETAIL
 S54 T = 1'-0"



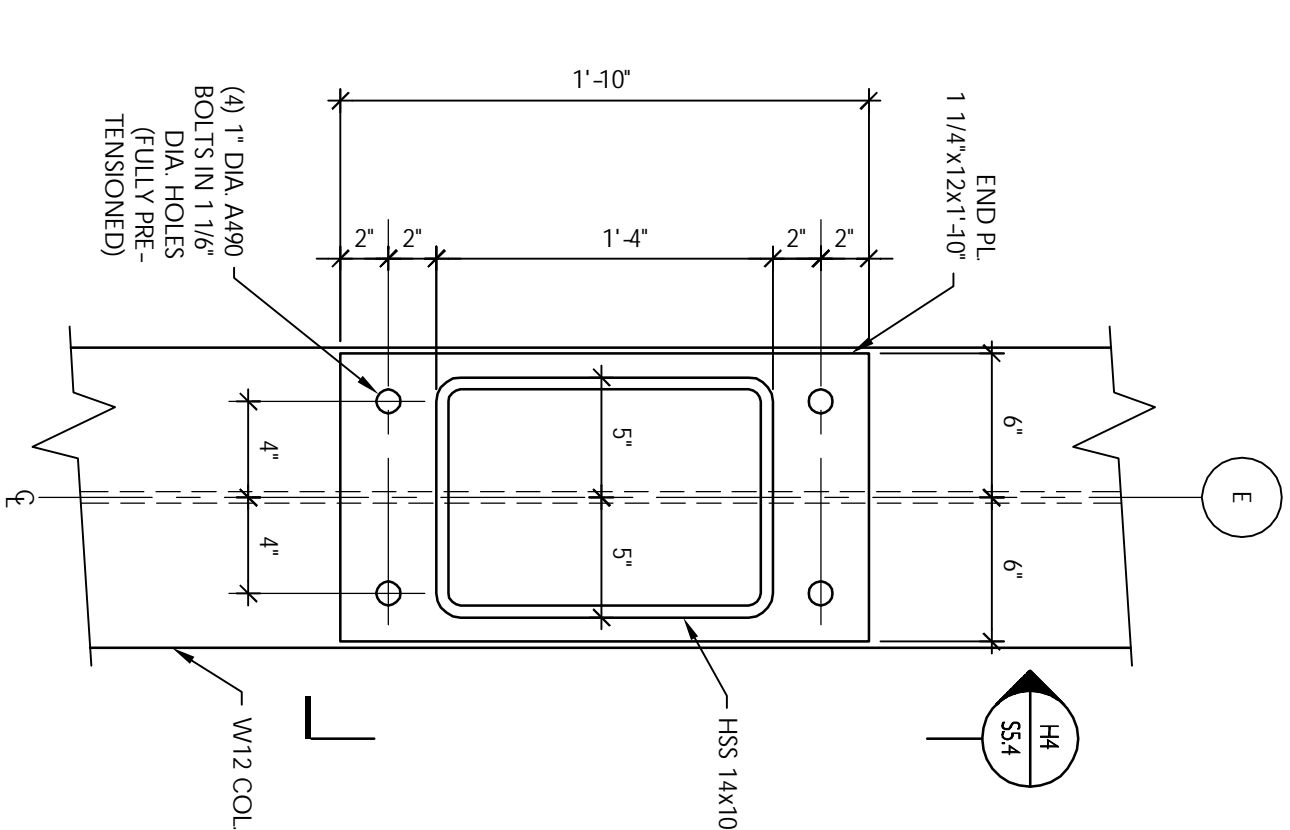
F6 SECTION
 S54 3/8\"/>



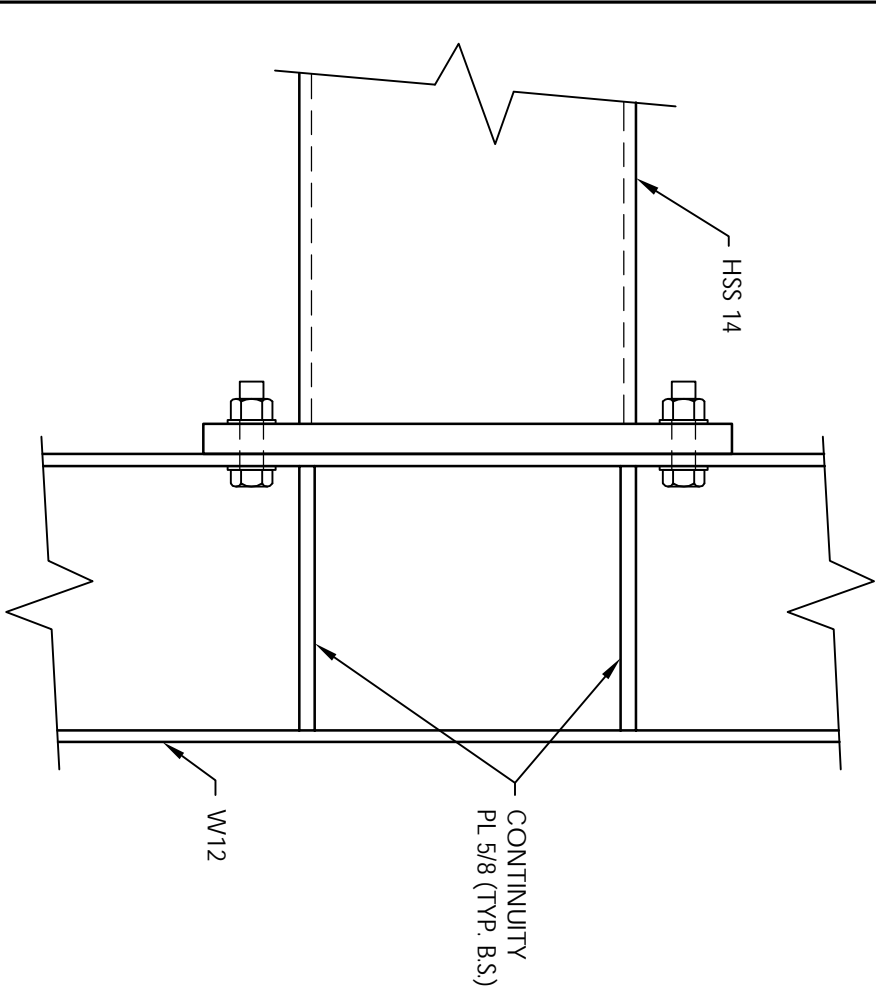
F8 SECTION
 S54 NTS



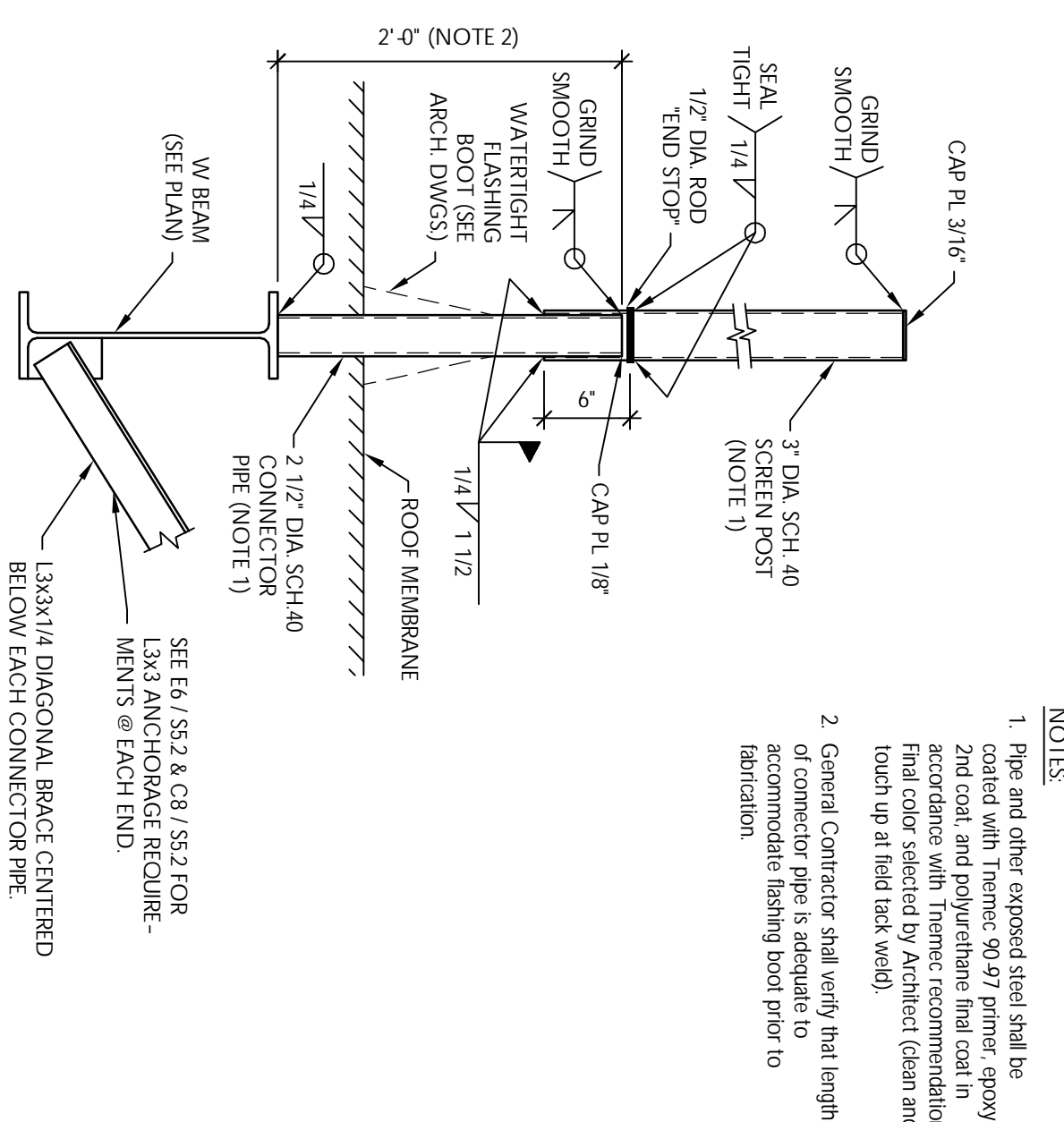
H1 TYPICAL FLANGE MOMENT CONNECTION @ PENTHOUSE
 S54 T = 1'-0"



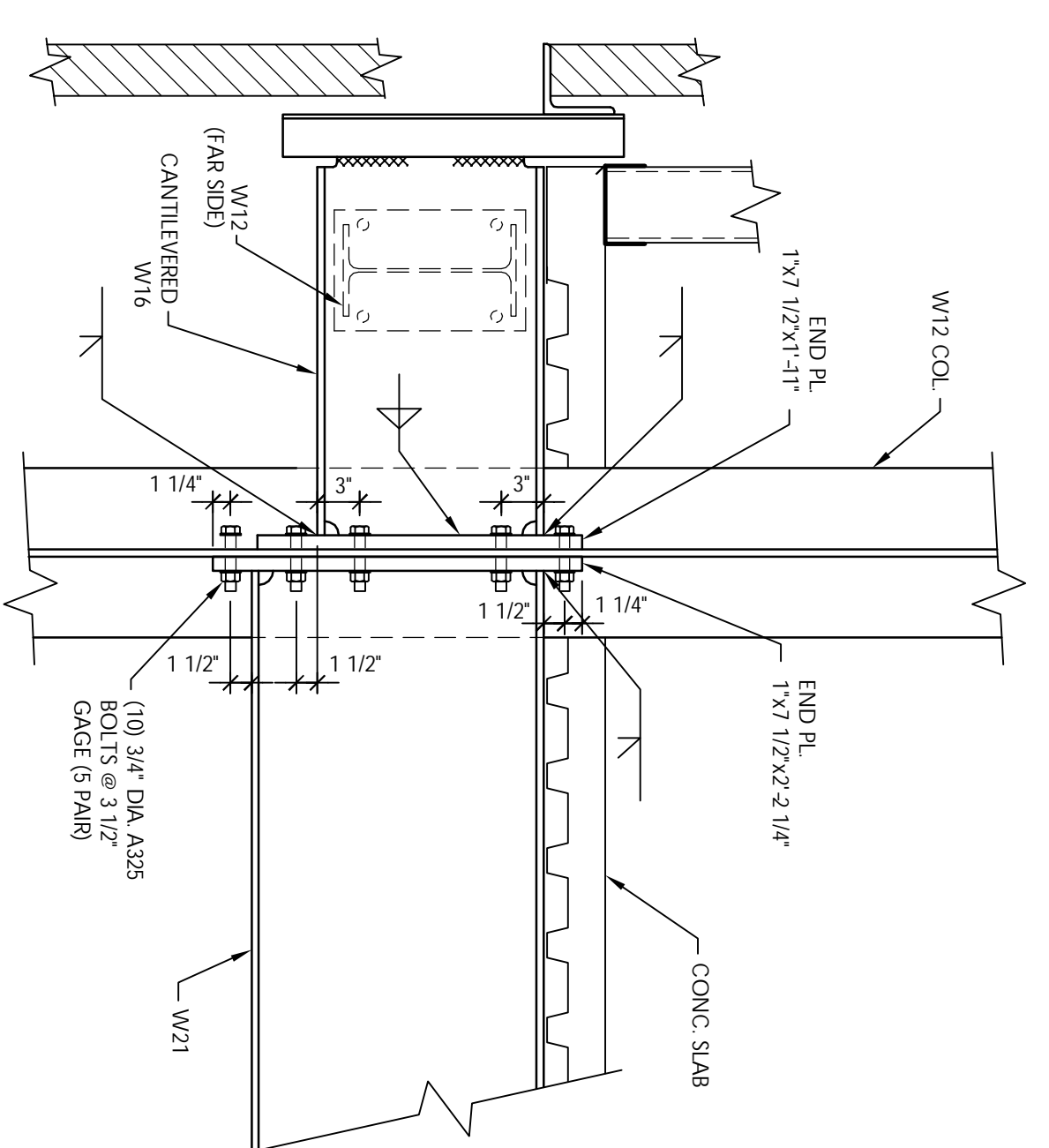
H3 SECTION
 S54 NTS



H4 SECTION
 S54 NTS



H6 SECTION
 S54 T = 1'-0"



H9 SECTION
 S54 NTS

REVISIONS:

| Description: | Date: |
|-------------------|---------|
| Issued for Review | 11/6/05 |
| CAD Filename: | |

Drawing Title:
FRAMING SECTIONS & DETAILS
 Scale: As Noted
 Date: 10/25/05
 PSE Proj. No.: 127-05
 CWS/Marginal Way/Details

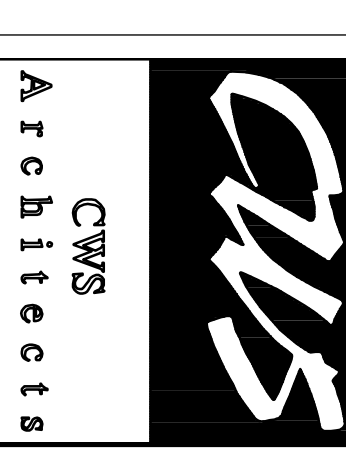
Owner:
BAYSIDE HOLDINGS, LLC
 50 PORTLAND PIER SUITE 400
 PORTLAND, MAINE 04101

MULTI-TENANT OFFICE BUILDING

MARGINAL WAY
 PORTLAND, MAINE
 04101



434 Cumberland Avenue
 Portland, ME 04101
 Phone: (207) 774-4441
 Fax: (207) 774-4016
 www.CWSarch.com



Drawing Number:
S5.4