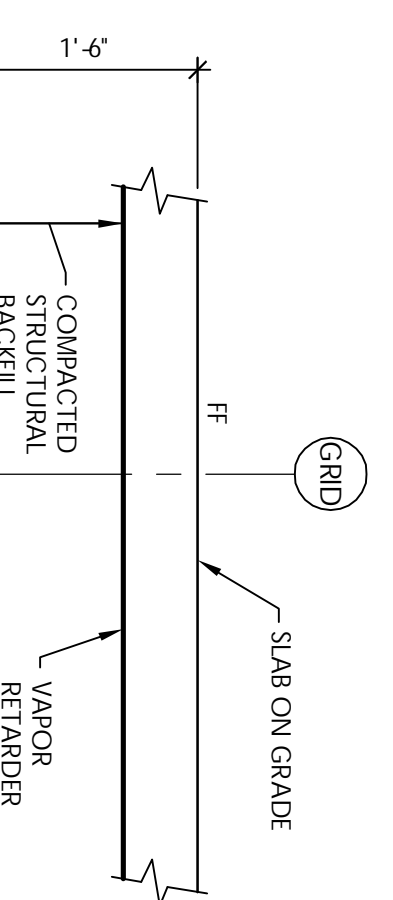


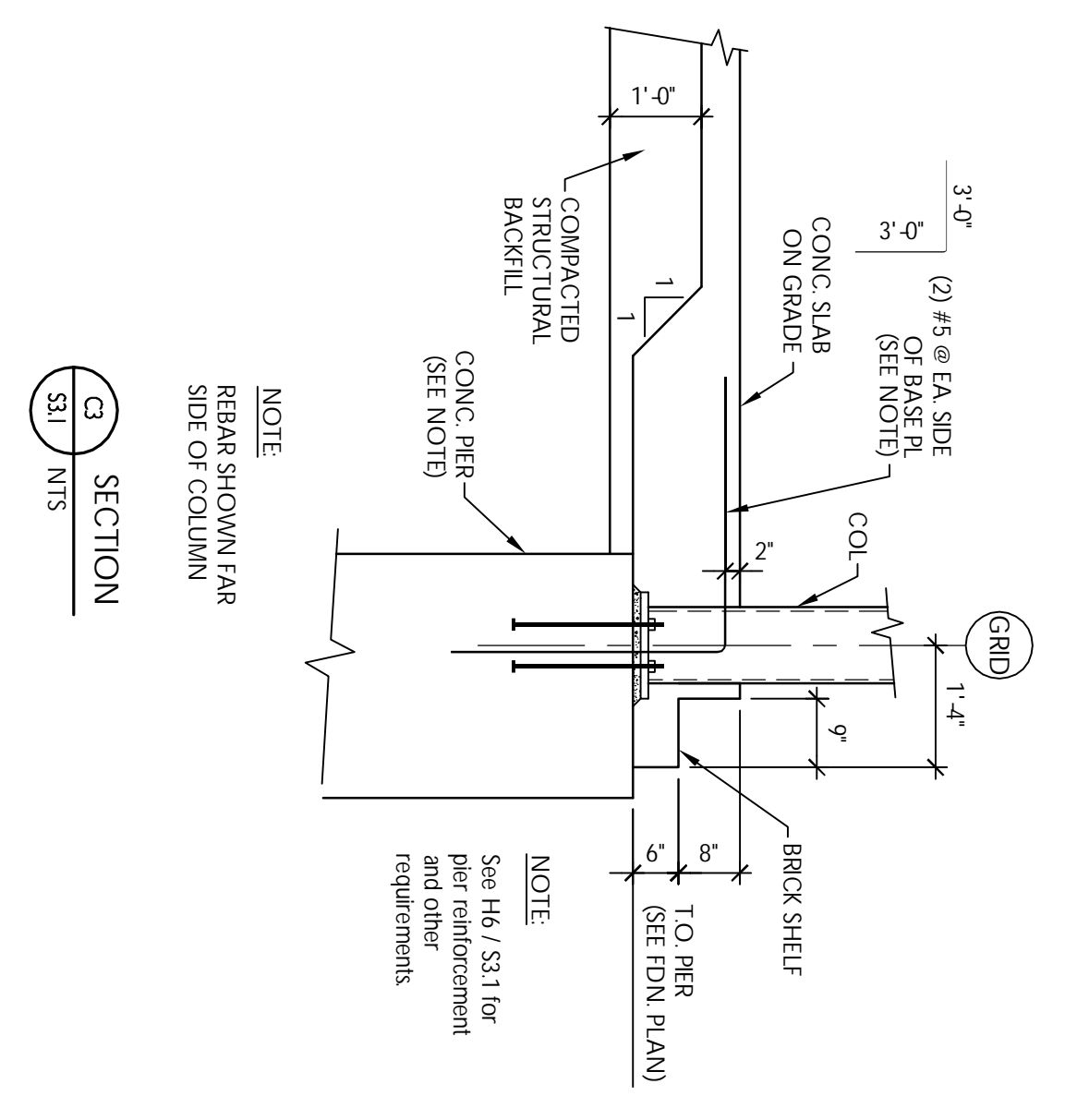
PRELIMINARY
NOT FOR CONSTRUCTION

UNDER NO CIRCUMSTANCES SHALL THIS DRAWING BE USED TO DEVELOP SHOP DRAWINGS OR FABRICATE NEW MATERIALS.

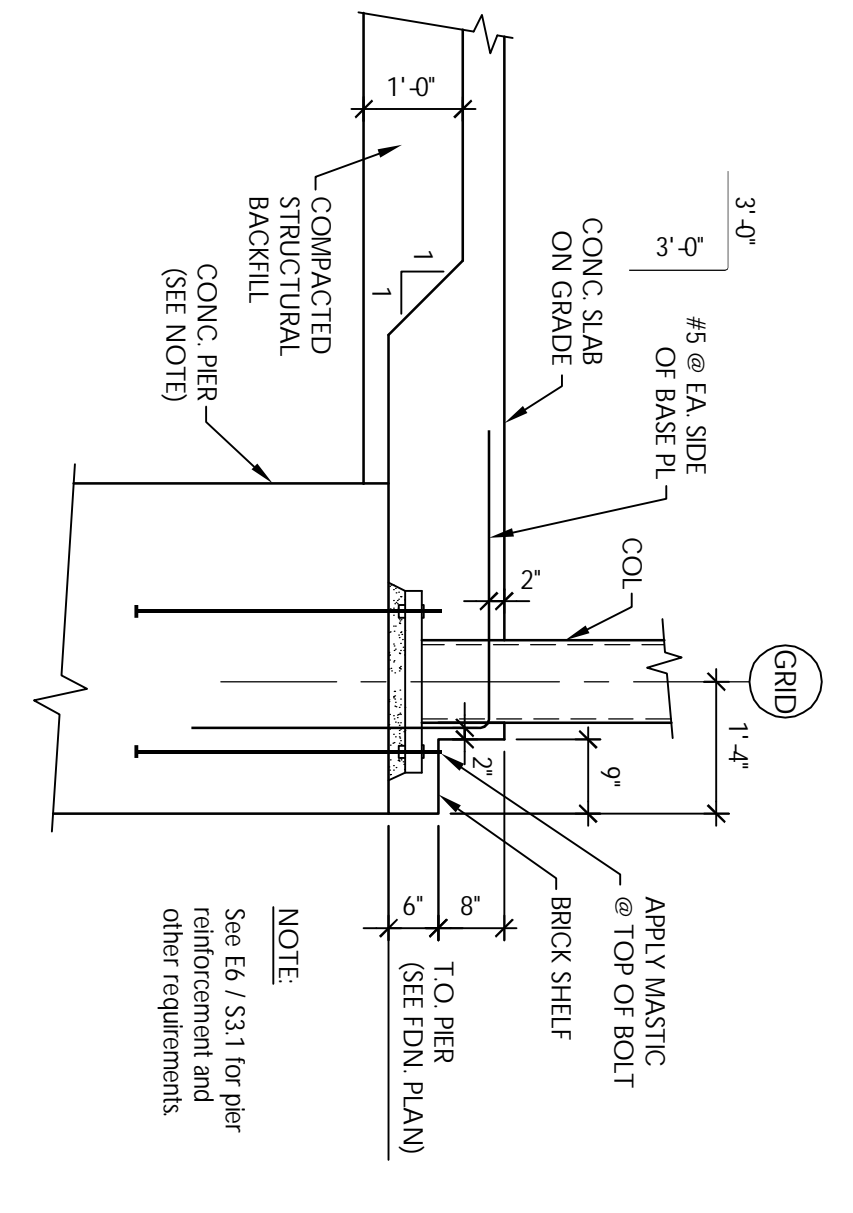


- NOTES:**
- Horizontal reinforcement shall have matching dowels at beam intersections and corners as specified in Detail H6/S30.
 - Horizontal reinforcement shall extend through concrete slab.

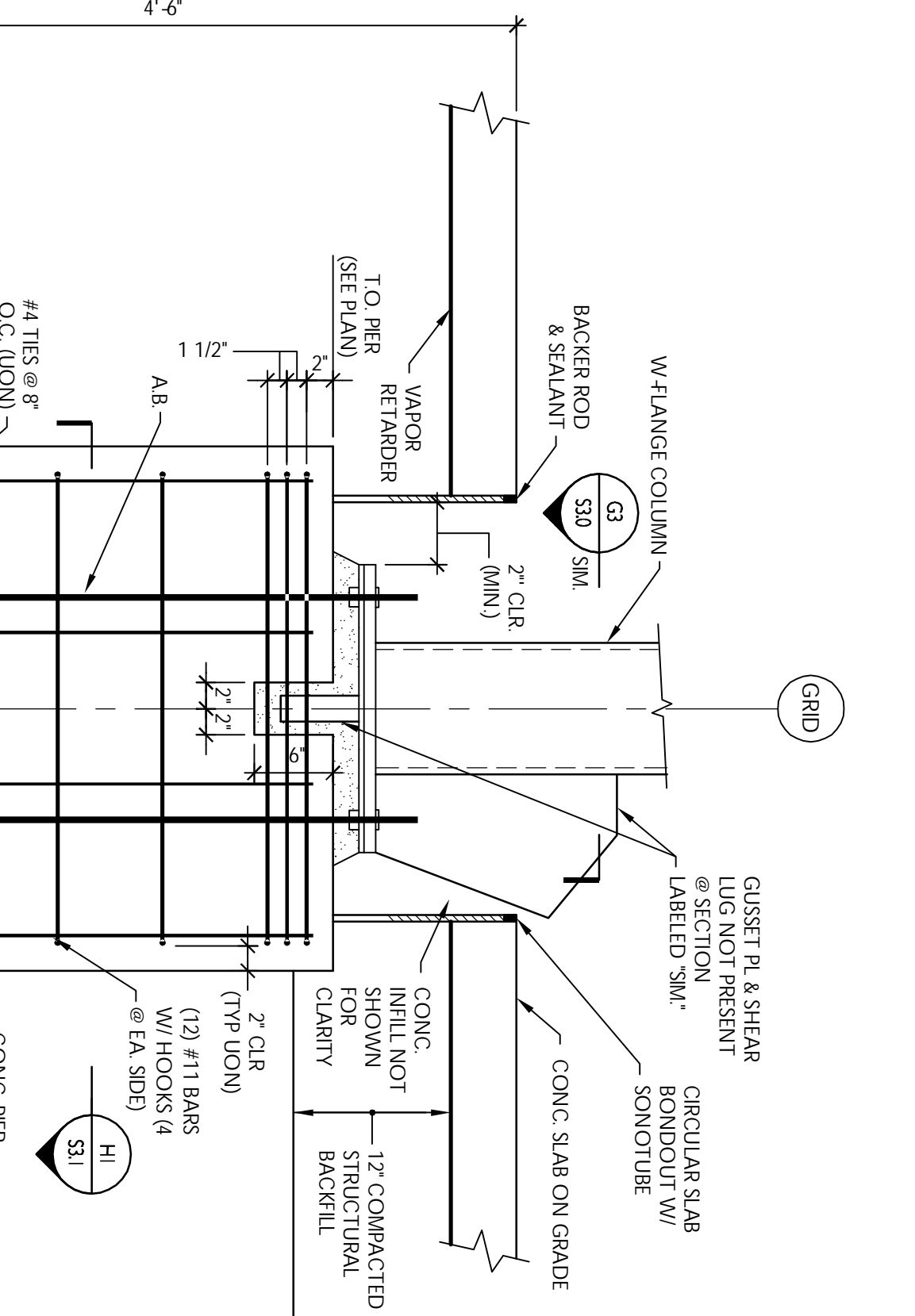
TYPICAL INTERIOR TIE BEAM
 E1 SECTION
 S31 NTS



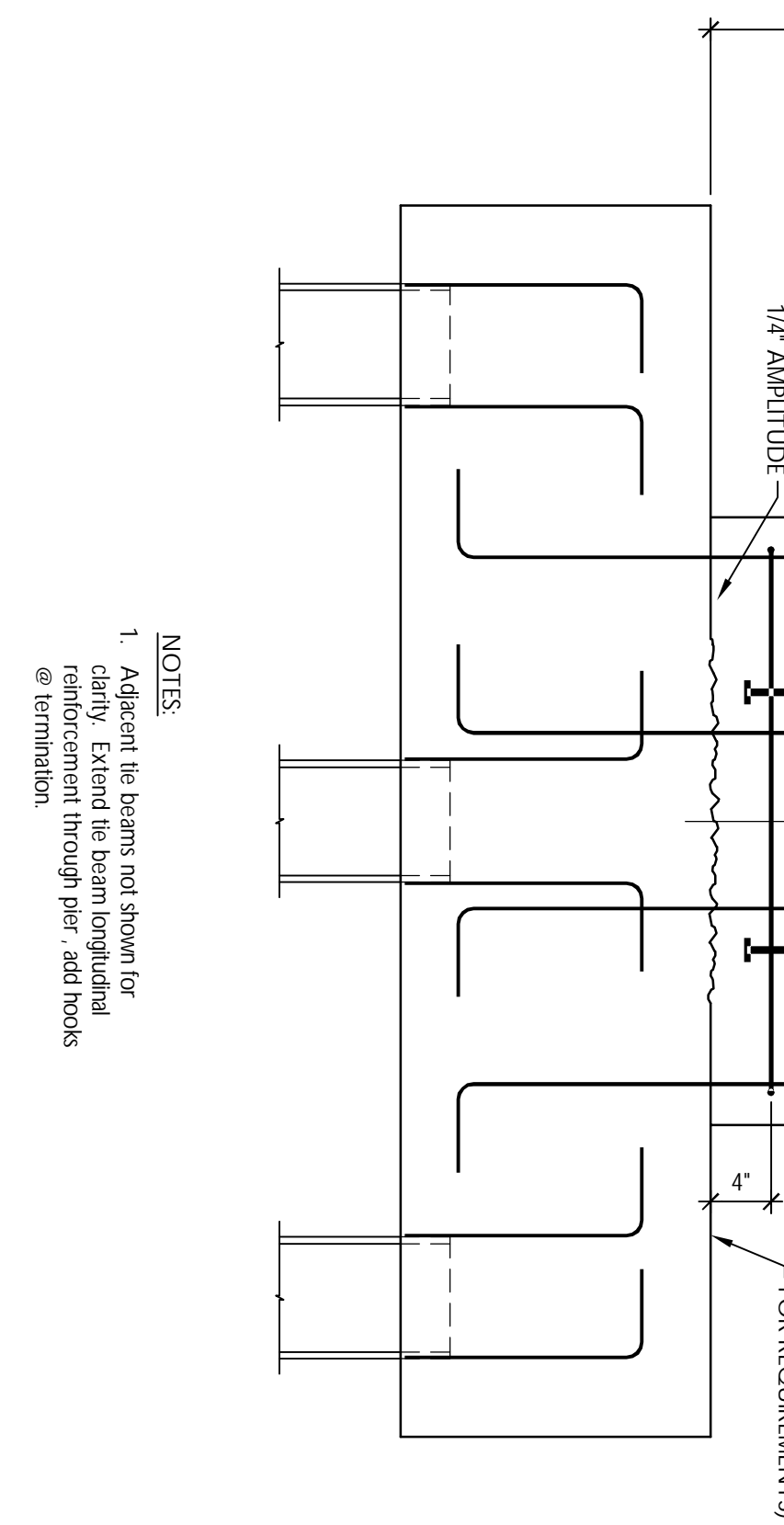
SECTION C
 S31 NTS



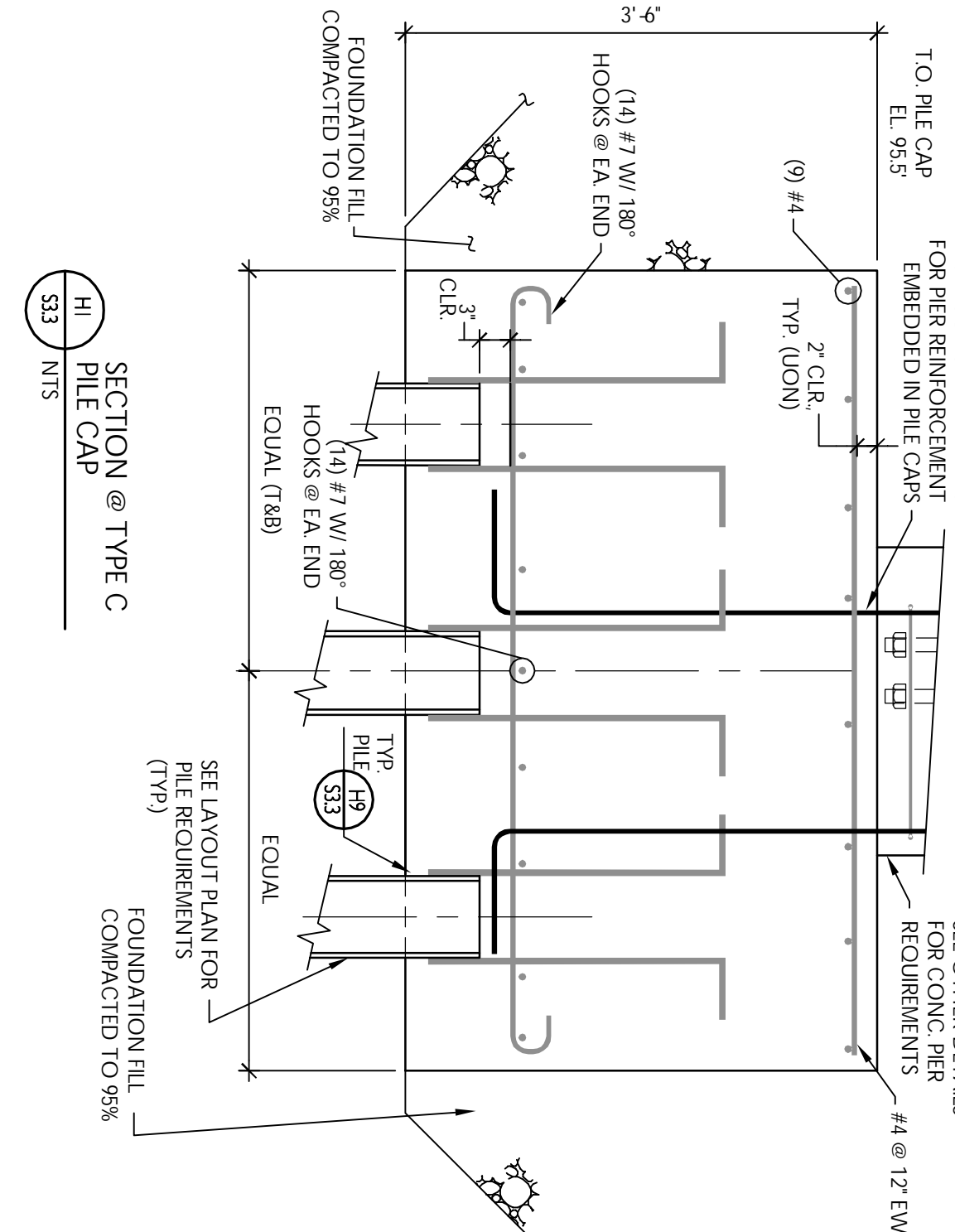
SECTION E3
 S31 NTS



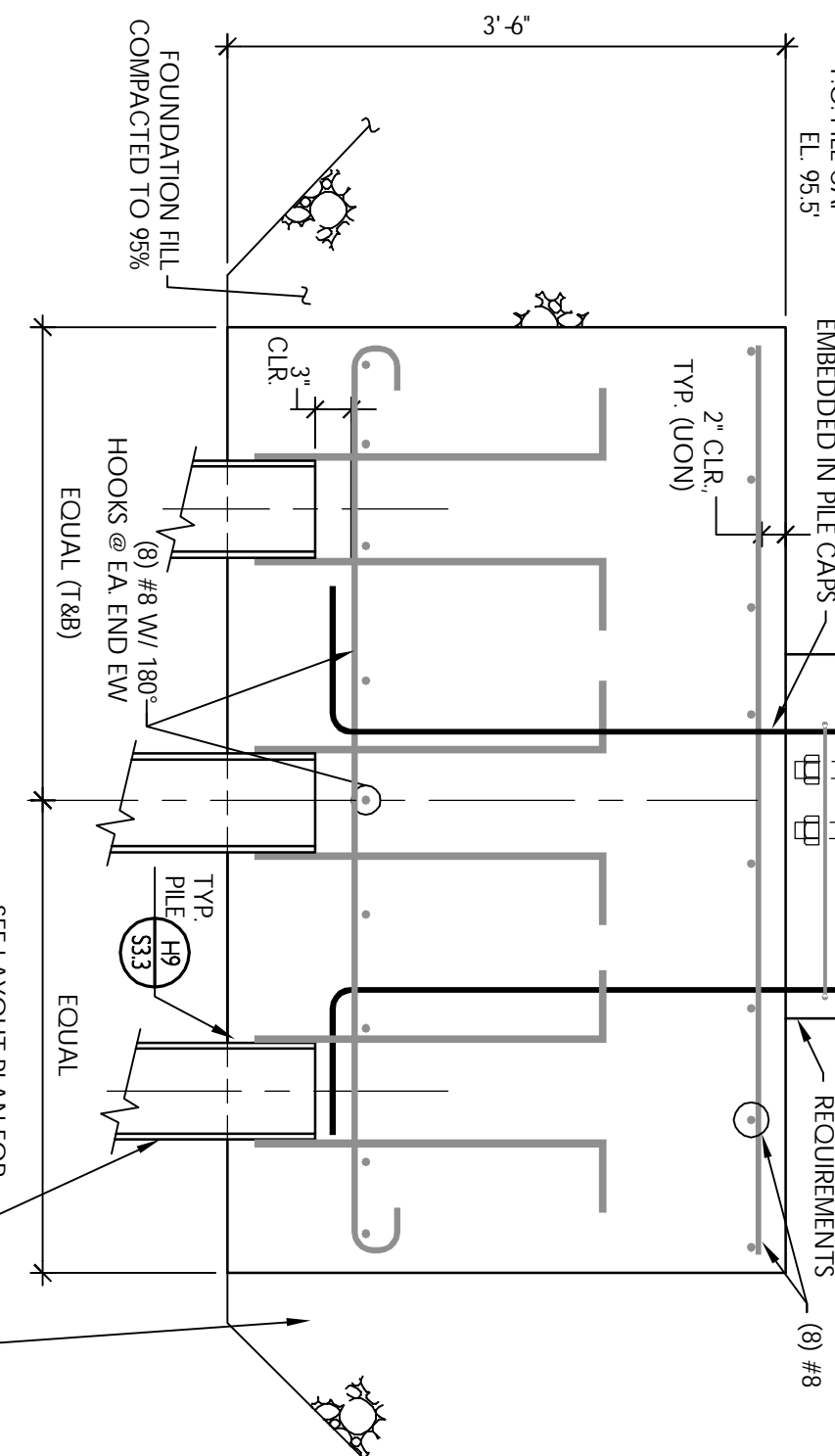
SECTION H1
 S31



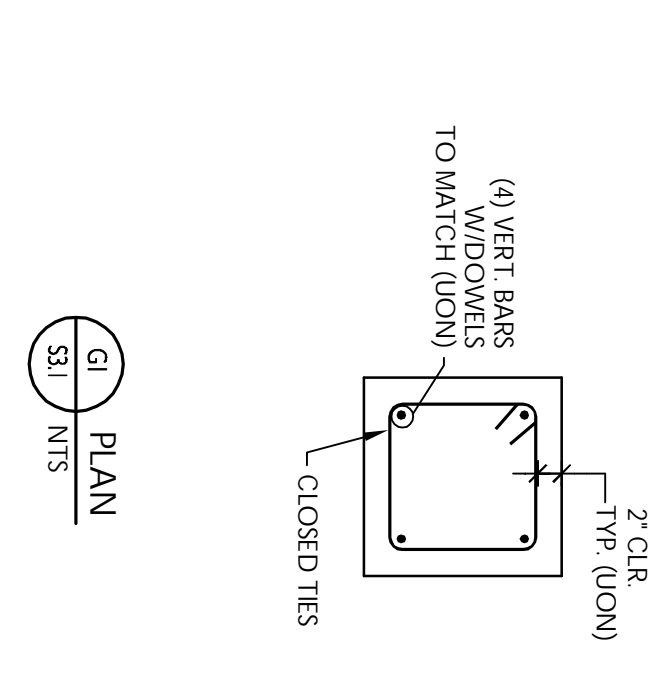
SECTION E5
 S31 T=1'-0"



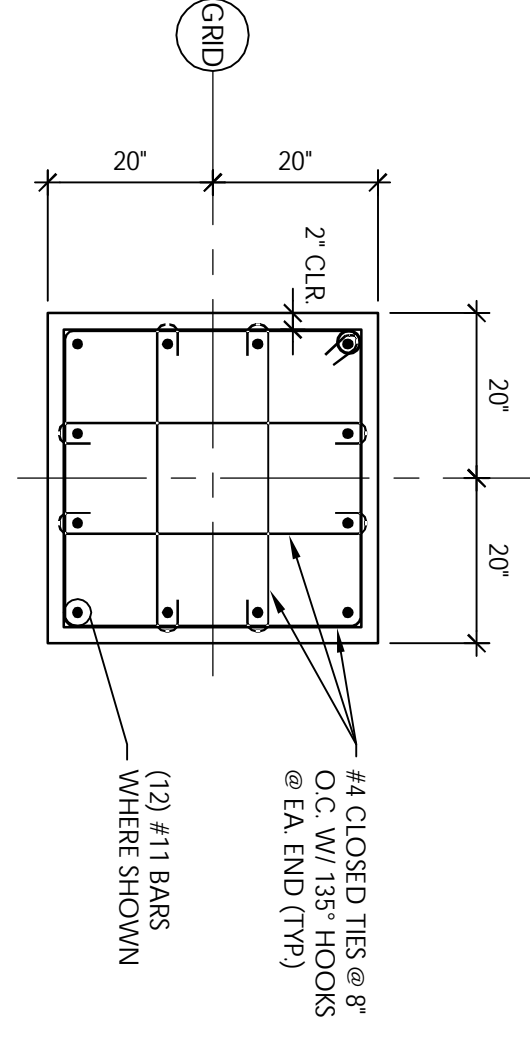
SECTION @ TYPE C
 H1 PILE CAP
 S33 NTS



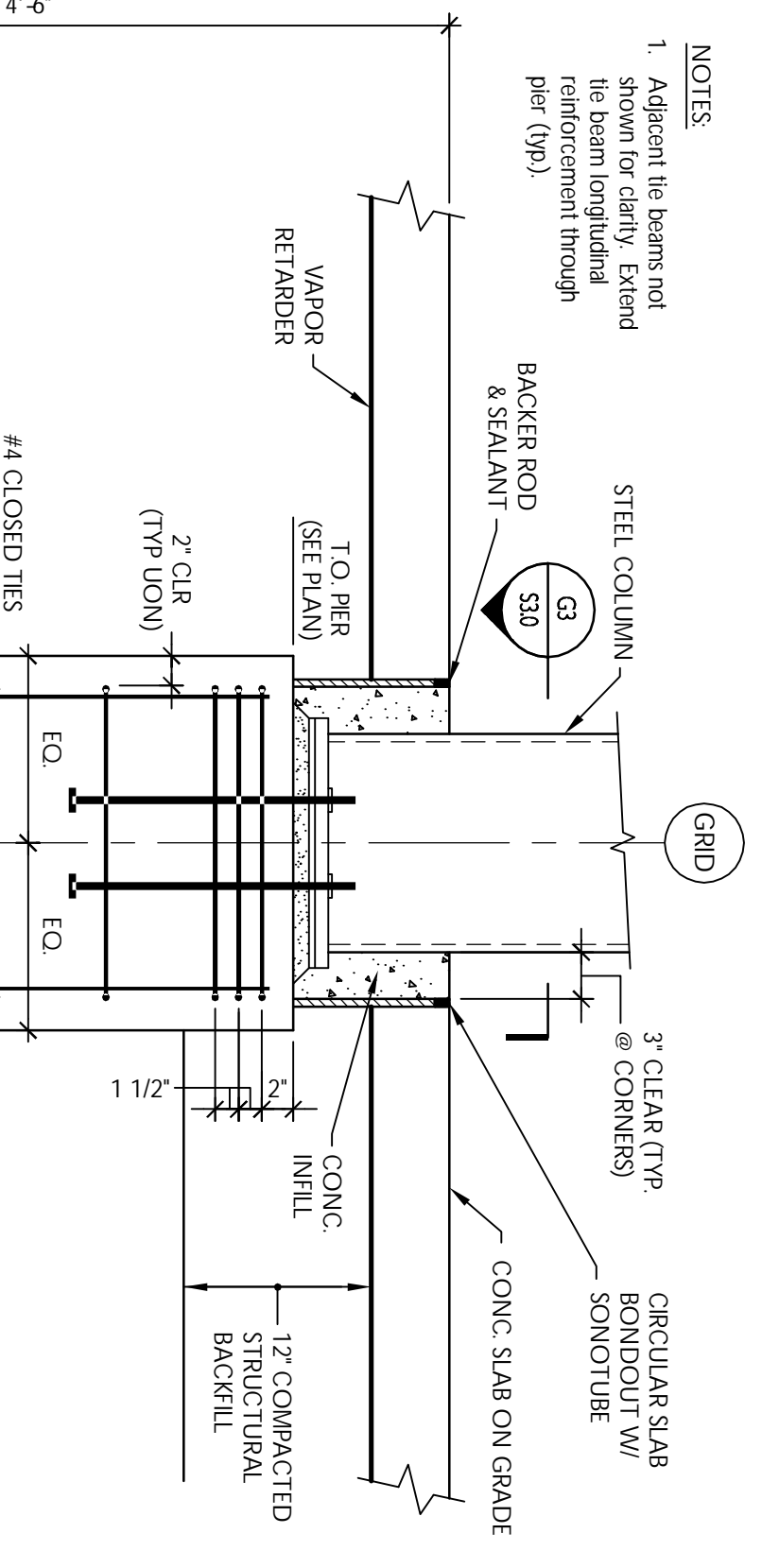
SECTION @ TYPE A
 X PILE CAP
 S33 NTS



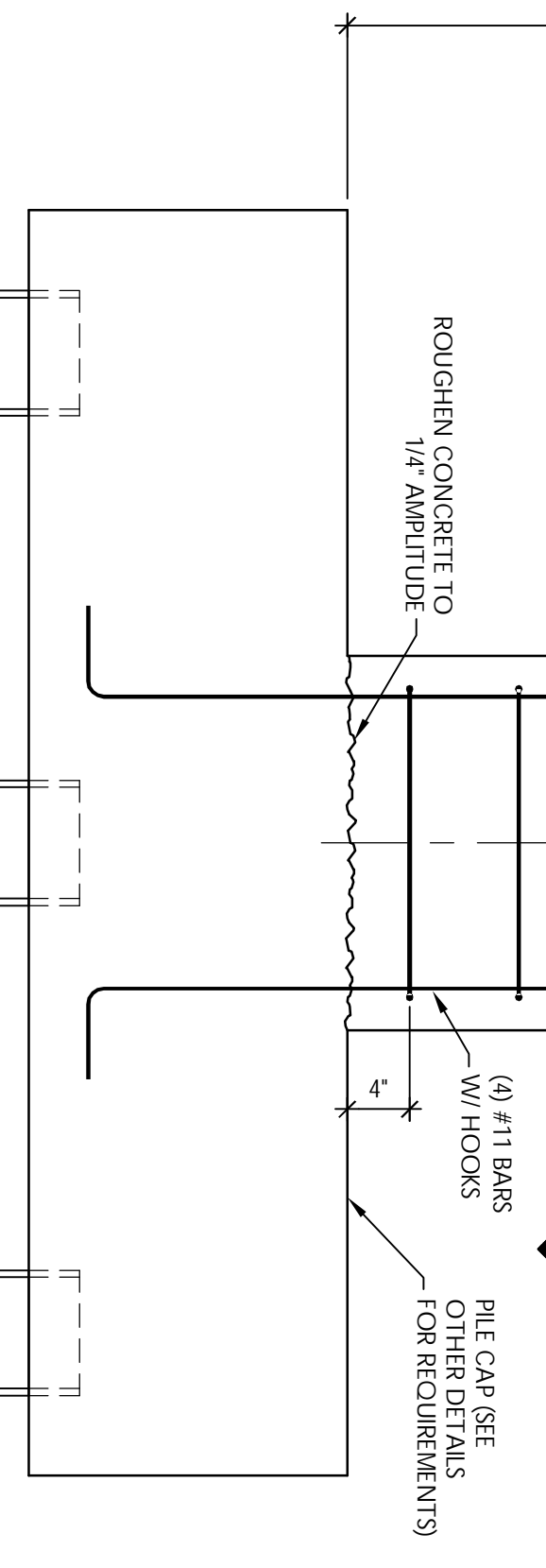
PLAN G1
 S31 NTS



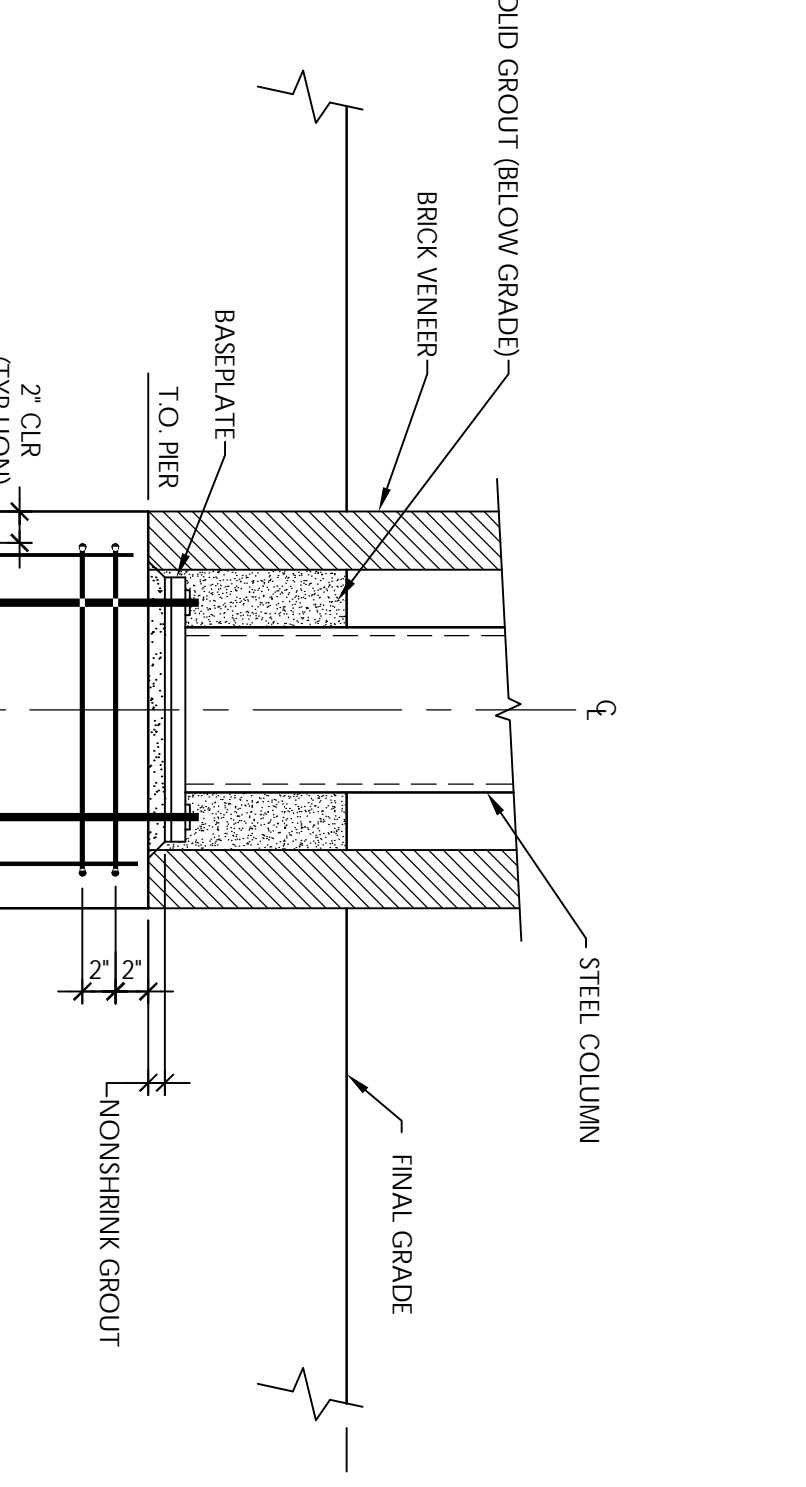
SECTION H1
 S31 NTS



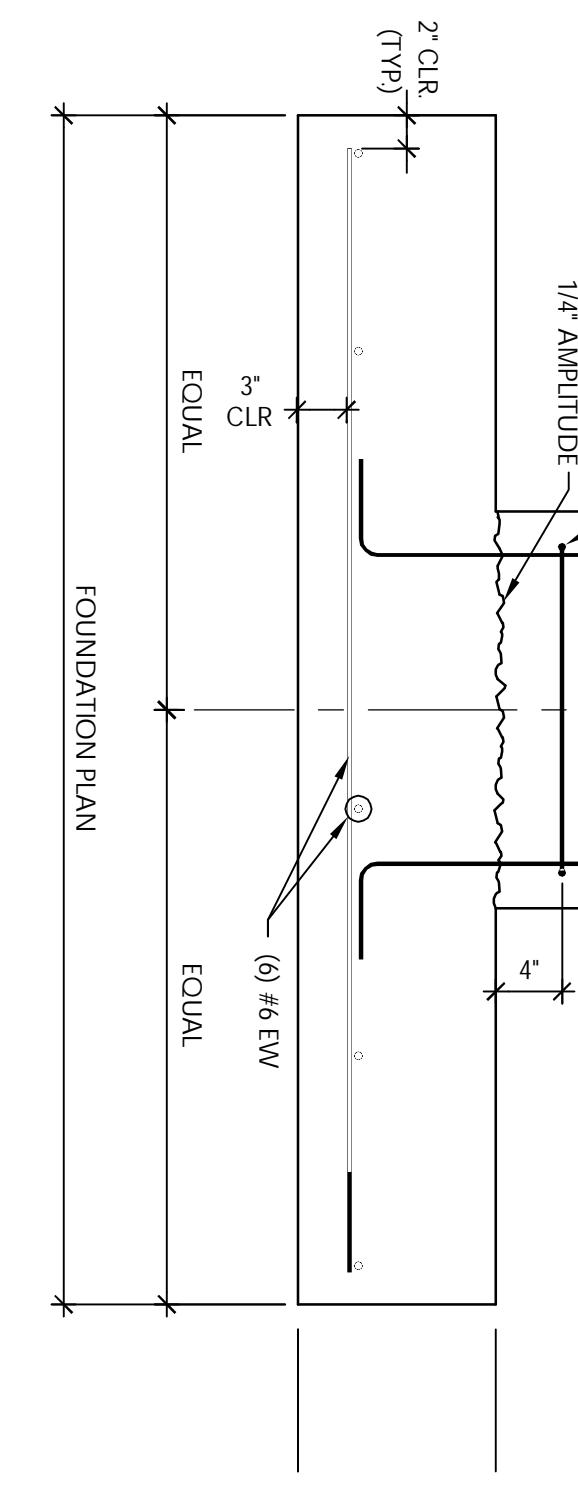
SECTION G3
 S31



SECTION H6
 S31 T=1'-0"



PLAN G1
 S31



SECTION H4
 S31 T=1'-0"

CWS Architects

434 Cumberland Avenue
 Portland, ME 04101
 Phone: (207) 774-4441
 Fax: (207) 774-4016
 www.CWSArch.com

RP
 RICE PINE
 73 Farm Road
 Portland, ME 04101
 Phone: (207) 774-4441
 Fax: (207) 774-4016
 www.RPArch.com

MULTI-TENANT OFFICE BUILDING

MARGINAL WAY
 PORTLAND, MAINE
 04101

BAYSIDE HOLDINGS, LLC

50 PORTLAND PIER
 SUITE 400
 PORTLAND, MAINE
 04101

REVISIONS	
Description:	Date:
Issued for Permit Only	11/11/05
CAD Filename:	
CWS/Marginal Way/Cnc	

Drawing Title:
FOUNDATION SECTIONS & DETAILS

Scale: As Noted
 Date: 10/25/05
 PSE Proj. No.: 127-05

Drawing Number:
S3.1