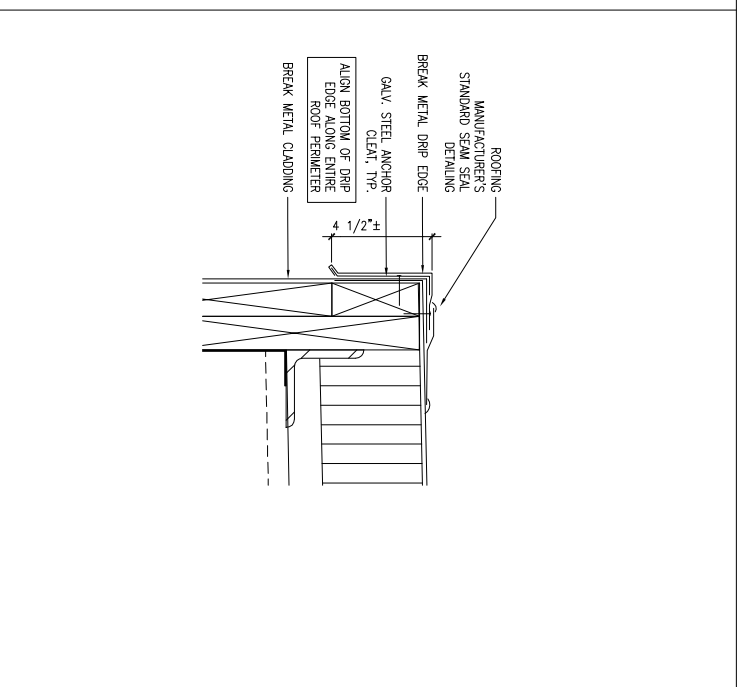
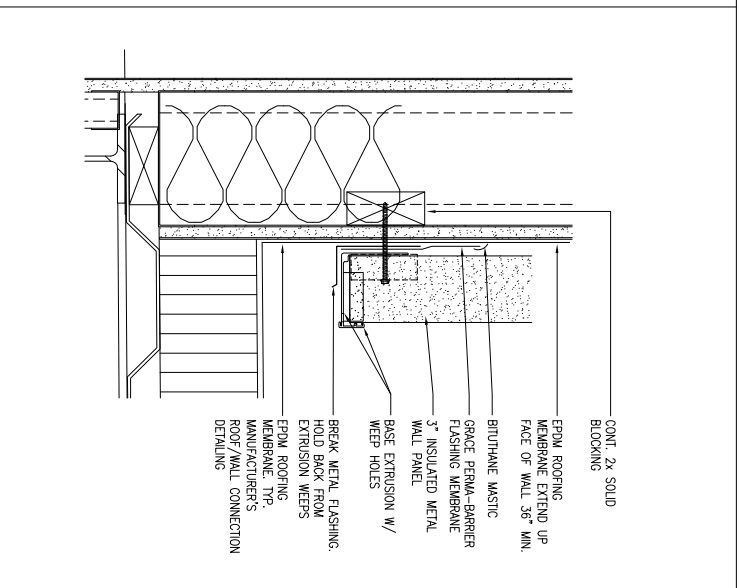


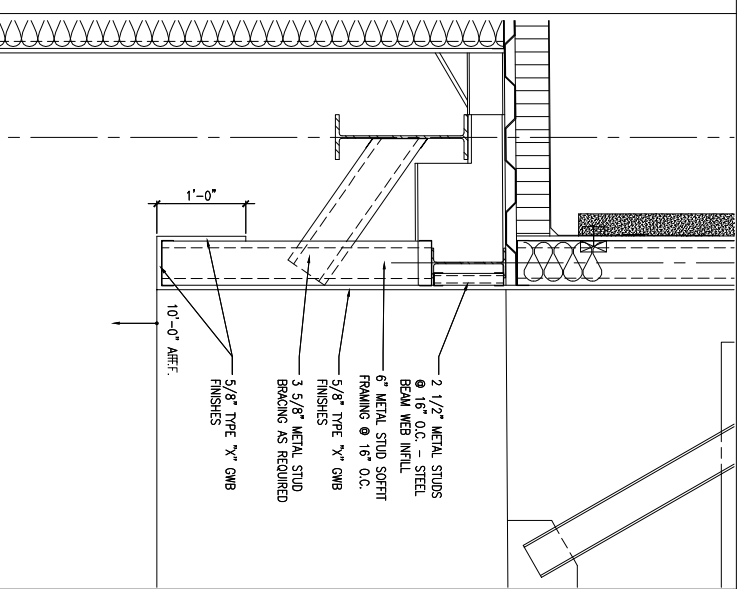
1 ROOF EDGE DETAIL @ CLERESTORY ROOF
 REFERENCED FROM:
 SCALE: 1" = 1'-0"



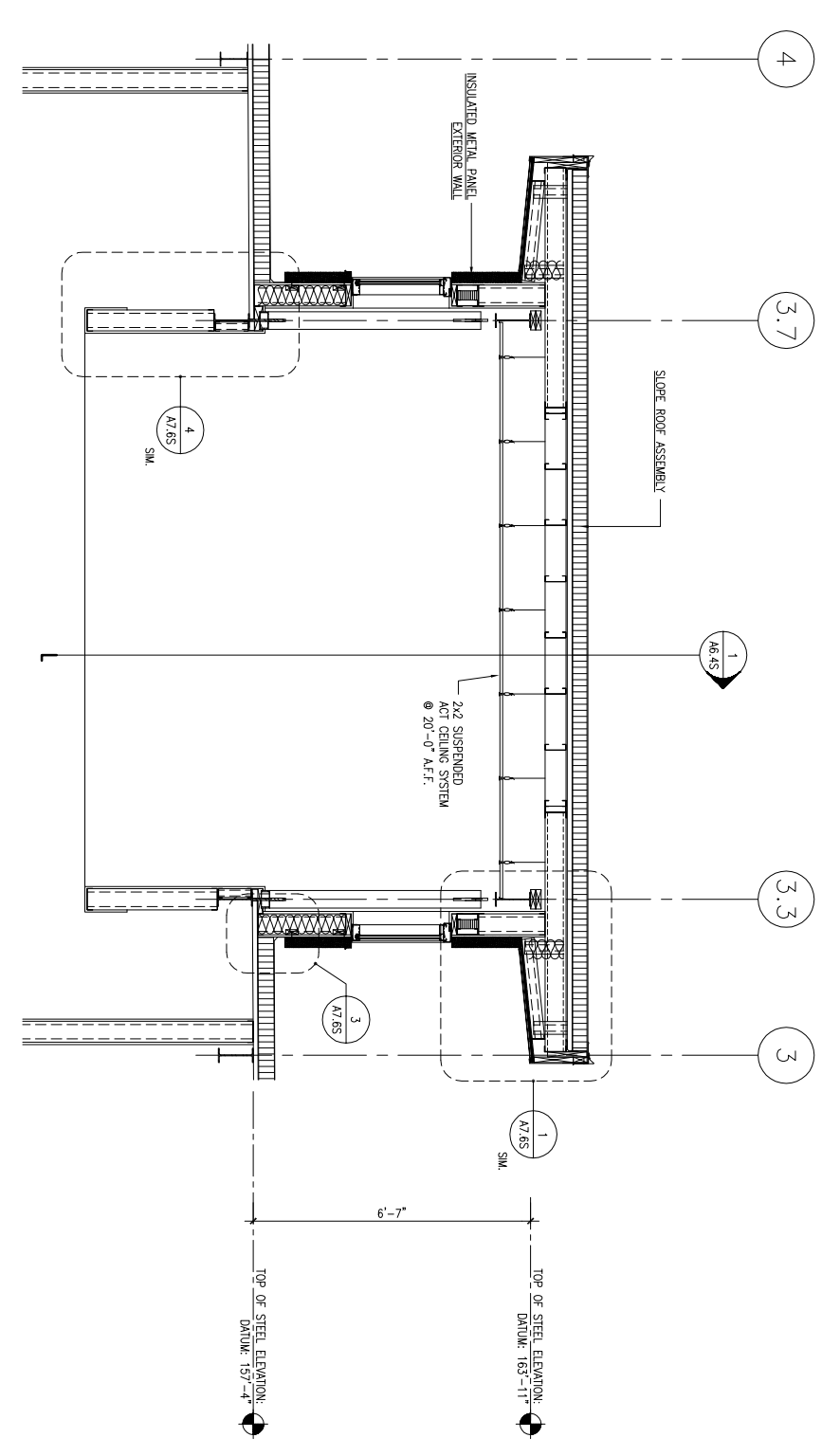
2 DETAIL @ LOW SIDE OF CLERESTORY ROOF
 REFERENCED FROM:
 SCALE: 3" = 1'-0"



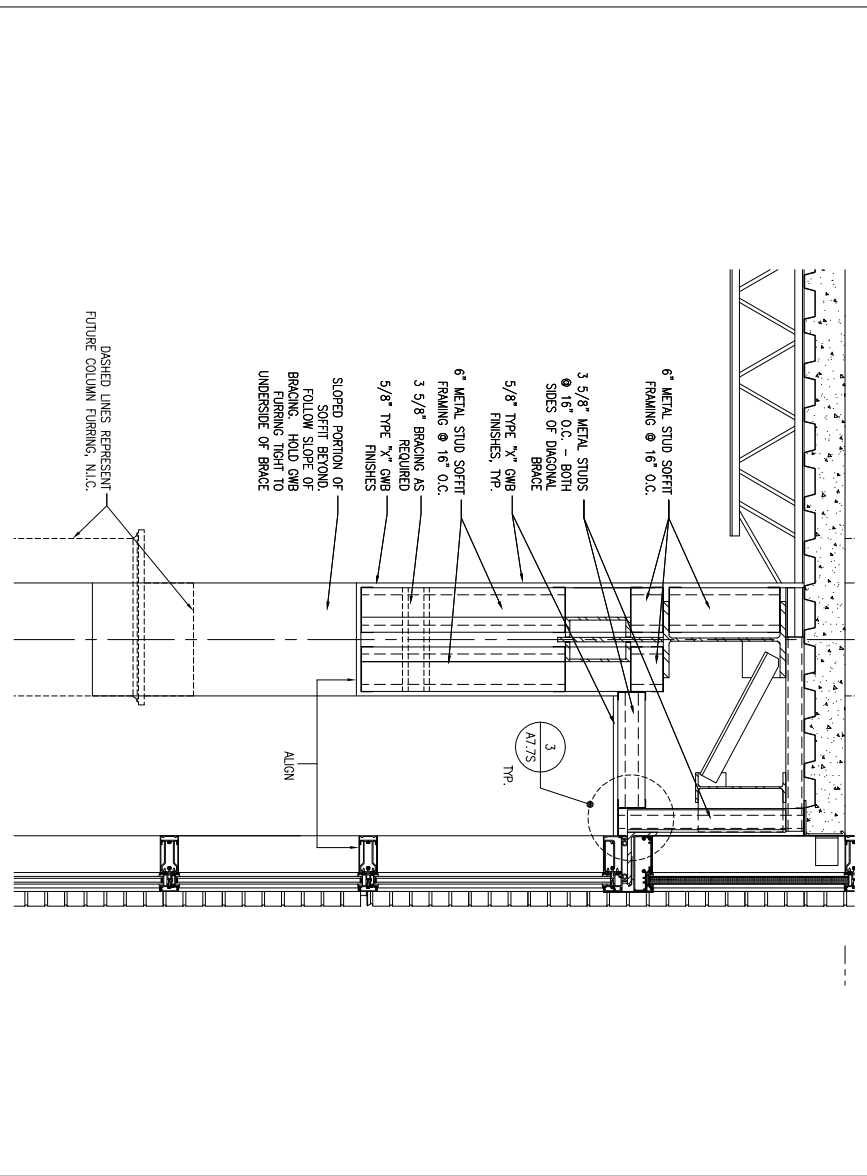
3 BASE OF CLERESTORY ROOF DETAIL
 REFERENCED FROM:
 SCALE: 3" = 1'-0"



4 TYP. CLERESTORY SOFFIT DETAIL
 REFERENCED FROM:
 SCALE: 1" = 1'-0"



9 WALL SECTION @ CLERESTORY ROOF STRUCTURE
 REFERENCED FROM:
 SCALE: 1/2" = 1'-0"



12 DETAIL @ CURTAINWALL SOFFIT
 REFERENCED FROM:
 SCALE: 1" = 1'-0"

CWS Architects
 494 Gristlefield Avenue
 Portland, ME 04101
 Phone: (207) 774-4441
 Fax: (207) 774-4016
 www.CWSarch.com

63 MARGINAL WAY MULTI-TENANT OFFICE BUILDING
 63 MARGINAL WAY
 PORTLAND, MAINE
 04101

BAYSIDE VENTURES, LLC
 50 PORTLAND PIER
 SUITE 400
 PORTLAND, MAINE
 04101

REVISIONS:	
Description:	Date:

MISC. SECTIONS & DETAILS
 Scale: AS NOTED
 Date: Progress 12/08/05
 CWS Proj. No.: 04430.hmo

A7.6S
 Drawing Number:
 ISSUED FOR PRICING 12/05/2005