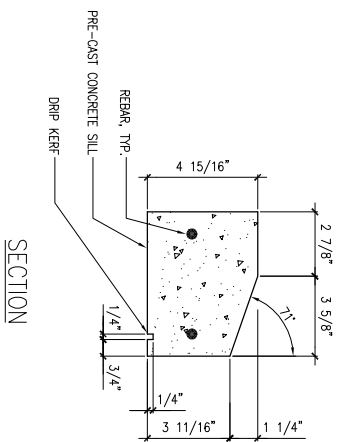
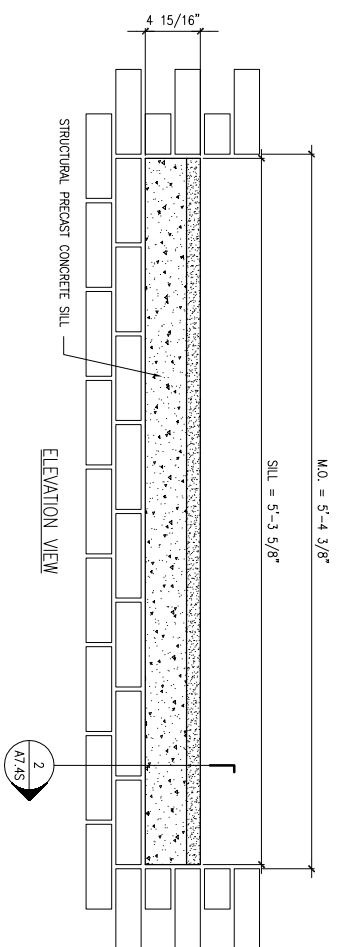


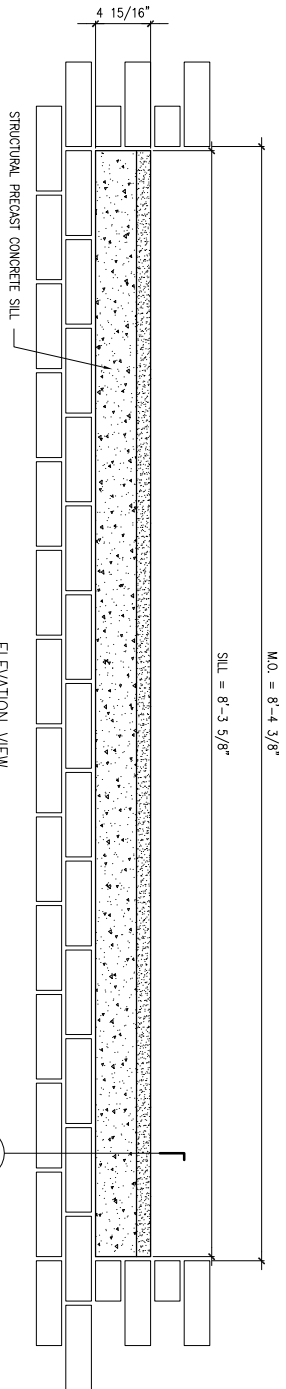
**1** THROUGH WALL FLASHING DETAIL @ SILL  
 REFERENCED FROM: SCALE: 6" = 1'-0"



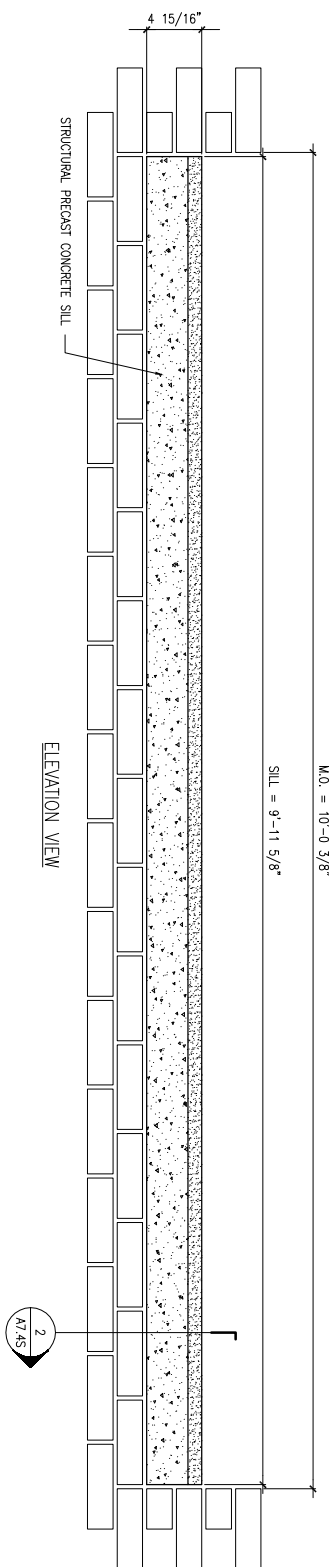
**2** SECTION DETAIL @ PRECAST CONCRETE SILL  
 REFERENCED FROM: SCALE: 3" = 1'-0"



**3** PRECAST CONCRETE SILL DETAIL  
 REFERENCED FROM: SCALE: 1 1/2" = 1'-0"



**6** PRECAST CONCRETE SILL DETAIL  
 REFERENCED FROM: SCALE: 1 1/2" = 1'-0"



**10** PRECAST CONCRETE SILL DETAIL  
 REFERENCED FROM: SCALE: 1 1/2" = 1'-0"

**CWS Architects**  
 454 Cumberland Avenue  
 Portland, ME 04101  
 Phone: (207) 774-4441  
 Fax: (207) 774-4016  
 www.CWSarch.com

**63 MARGINAL WAY  
 MULTI-TENANT  
 OFFICE BUILDING**  
 63 MARGINAL WAY  
 PORTLAND, MAINE  
 04101

Owner:  
**BAYSIDE  
 VENTURES, LLC**  
 50 PORTLAND PIER  
 SUITE 400  
 PORTLAND, MAINE  
 04101

REVISIONS:	
Description:	Date:

Drawing Title:  
**PRECAST DETAILS**  
 Scale: AS NOTED  
 Date: Progress 12/08/08  
 CWS Proj. No.: 04430.hmo

Drawing Number:  
**A7.4S**

**13** NOT USED  
 REFERENCED FROM: SCALE:

**14** NOT USED  
 REFERENCED FROM: SCALE:

**15** NOT USED  
 REFERENCED FROM: SCALE:

**16** NOT USED  
 REFERENCED FROM: SCALE: