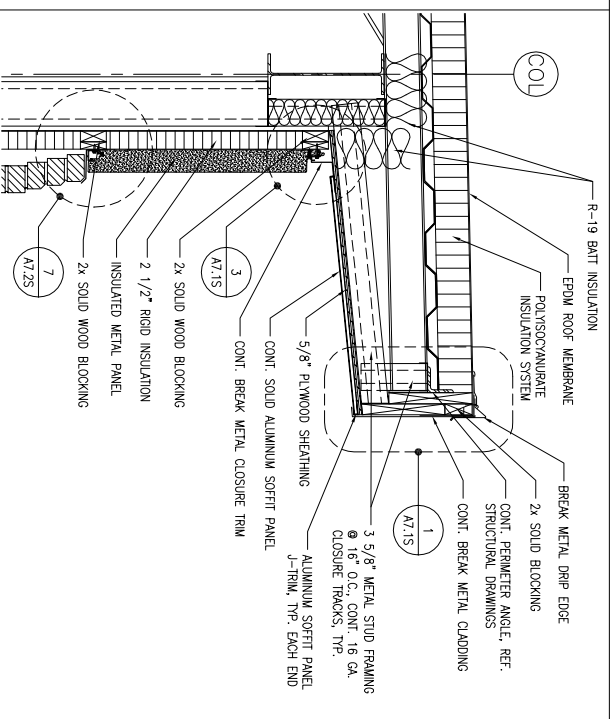
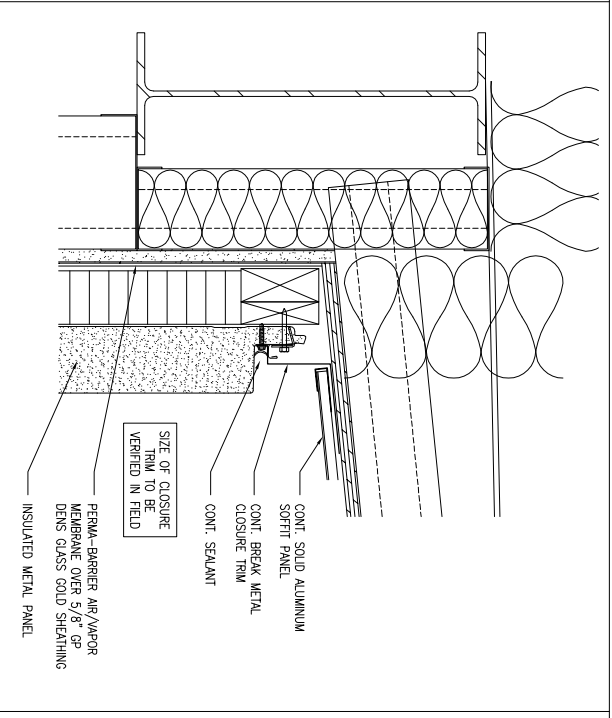


1 TYP. ROOF EDGE DETAIL
 REFERENCED FROM:
 SCALE: 3" = 1'-0"

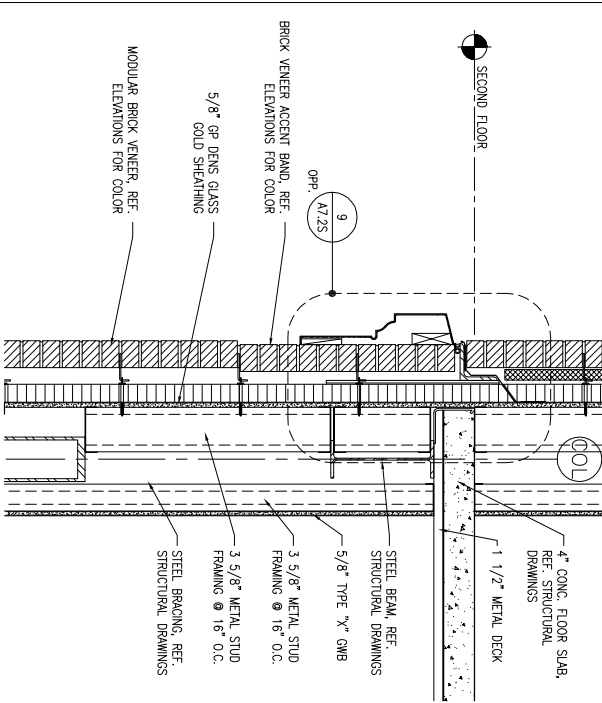


2 TYP. ROOF CORNICE DETAIL
 REFERENCED FROM:
 SCALE: 1" = 1'-0"

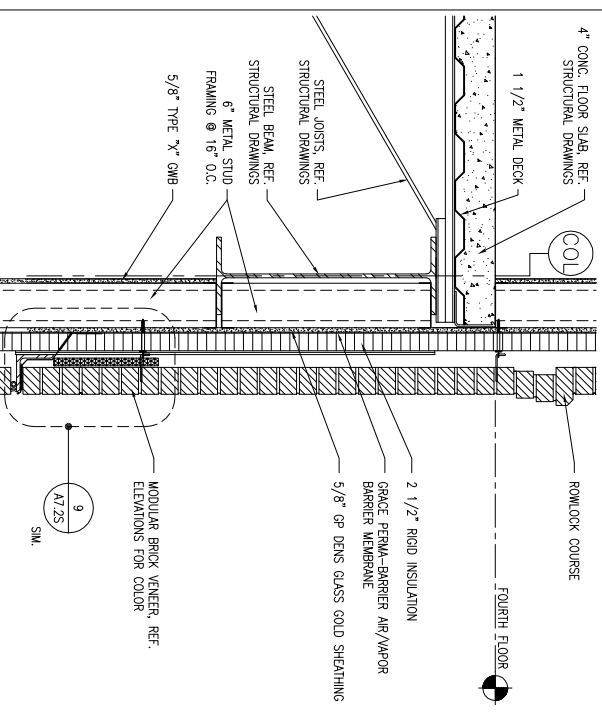


3 TYP. TOP OF METAL PANEL FLASHING DETAIL
 REFERENCED FROM:
 SCALE: 3" = 1'-0"

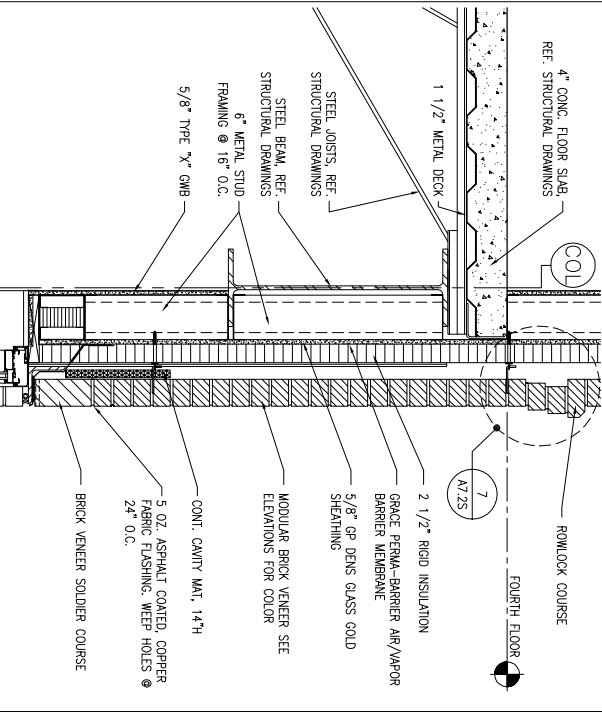
4 NOT USED
 REFERENCED FROM:
 SCALE:



5 RELIEVING ANGLE DETAIL @ ACCENT BAND
 REFERENCED FROM:
 SCALE: 1" = 1'-0"

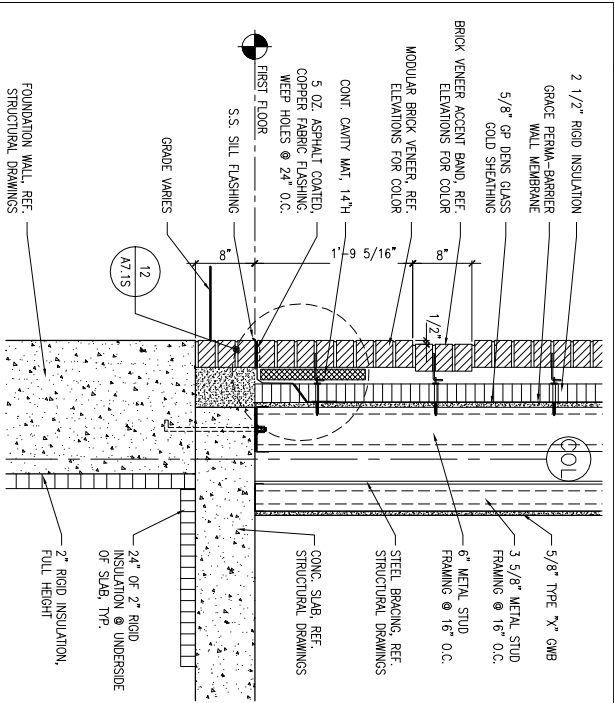


6 RELIEVING ANGLE DETAIL
 REFERENCED FROM:
 SCALE: 1" = 1'-0"

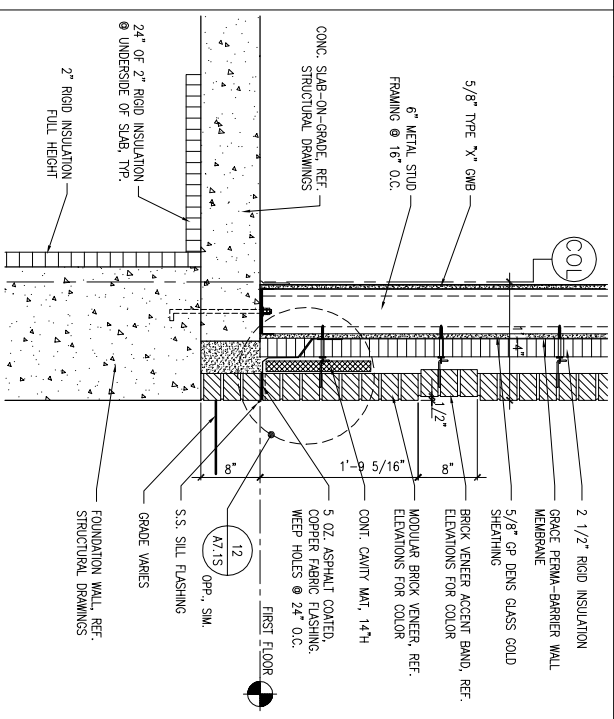


7 RELIEVING ANGLE DETAIL @ WINDOW
 REFERENCED FROM:
 SCALE: 1" = 1'-0"

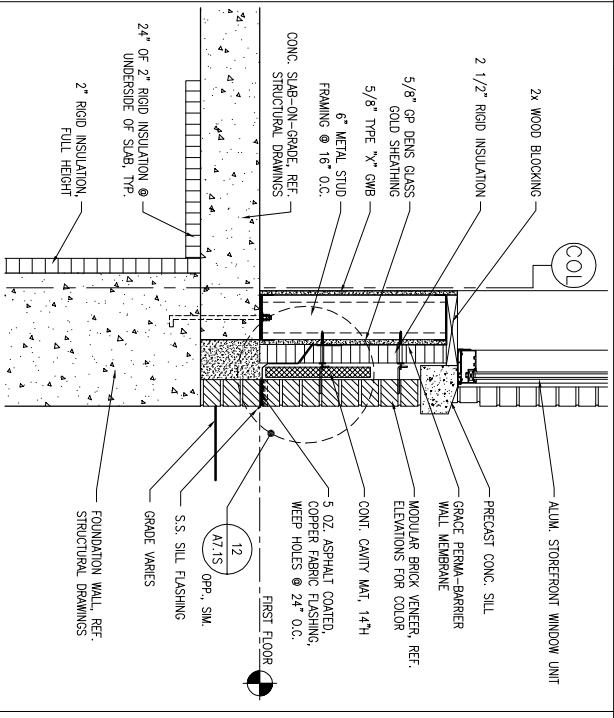
8 NOT USED
 REFERENCED FROM:
 SCALE:



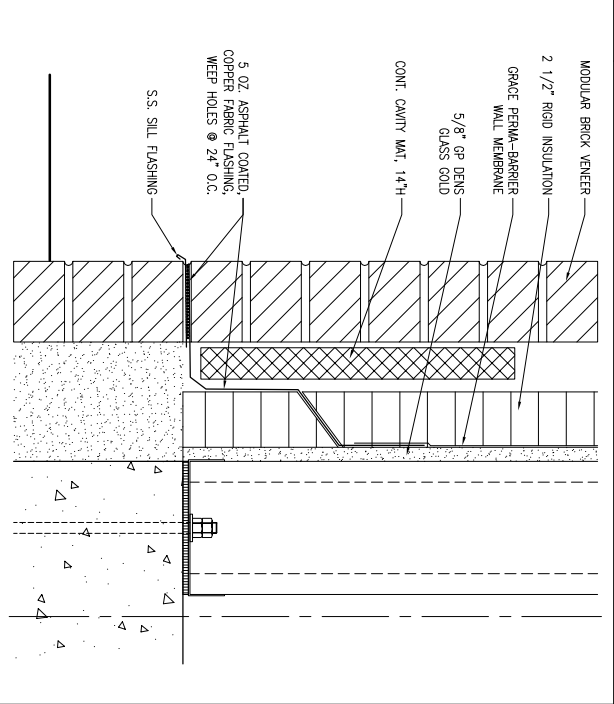
9 WALL BASE DETAIL
 REFERENCED FROM:
 SCALE: 1" = 1'-0"



10 BASE OF WALL DETAIL
 REFERENCED FROM:
 SCALE: 1" = 1'-0"



11 BASE OF WALL DETAIL @ WINDOW
 REFERENCED FROM:
 SCALE: 1" = 1'-0"



12 CANOPY ROOF DETAIL @ GUTTER
 REFERENCED FROM:
 SCALE: 3" = 1'-0"

REVISIONS		
Description	Date	

Owner:
BAYSIDE VENTURES, LLC
 50 PORTLAND PIER
 SUITE 400
 PORTLAND, MAINE
 04101

63 MARGINAL WAY
MULTI-TENANT
OFFICE BUILDING
 63 MARGINAL WAY
 PORTLAND, MAINE
 04101

454 Cumberland Avenue
 Portland, ME 04101
 Phone: (207) 774-4441
 Fax: (207) 774-4016
 www.CWSarch.com

CWS Architects

Drawing Title:
MISC. WALL DETAILS

Drawing Number:
A7.1S

Scale: AS NOTED
 Date: Progress 12/05/05
 CWS Proj. No.: 04430Jmo