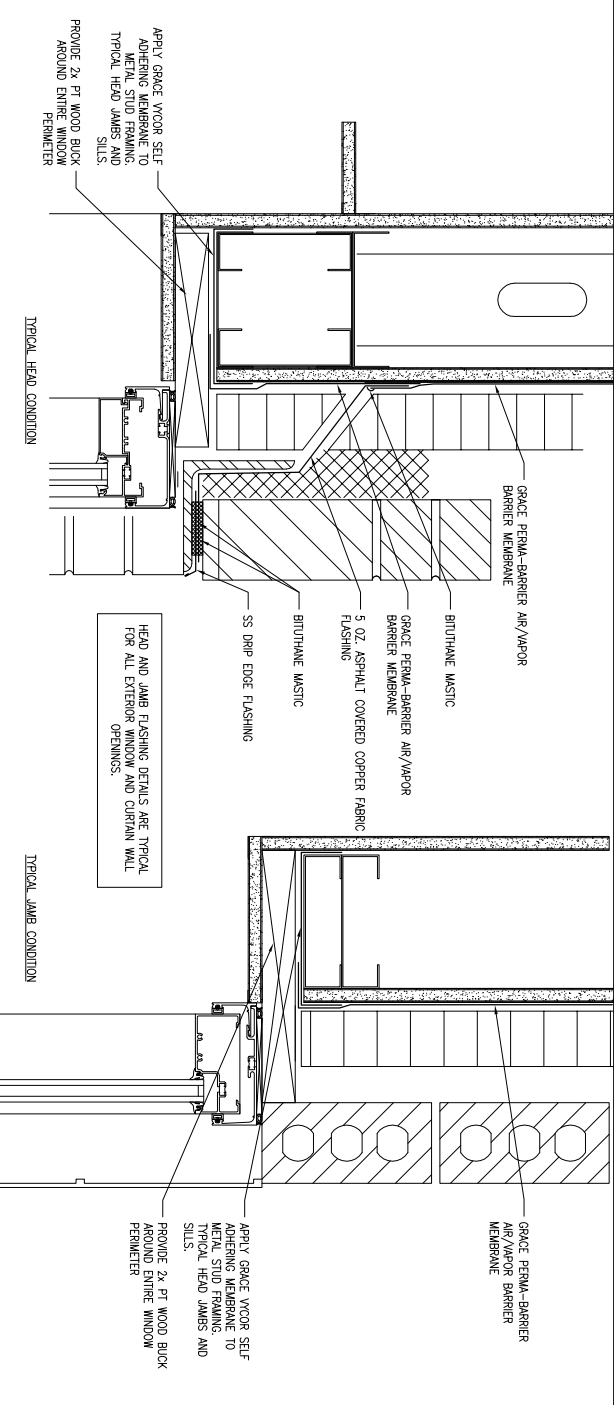
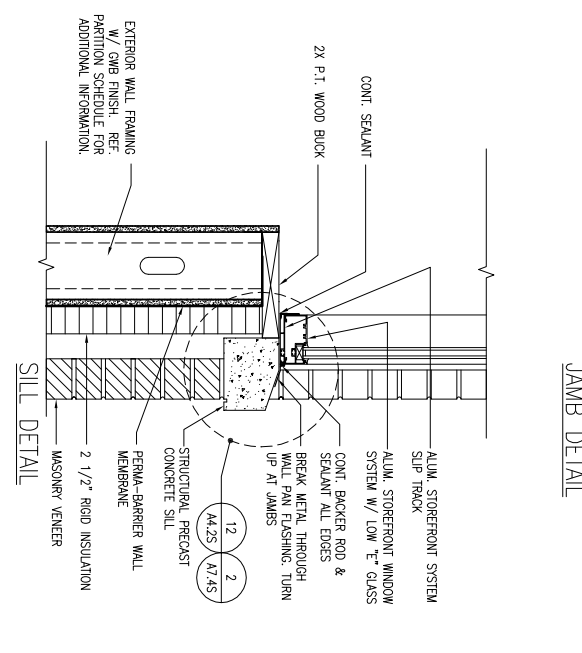
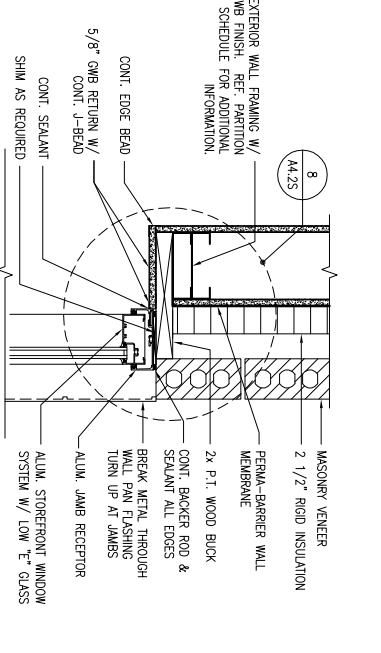
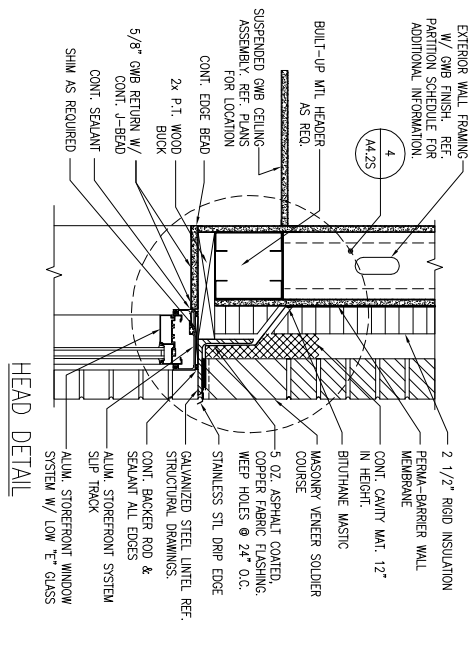
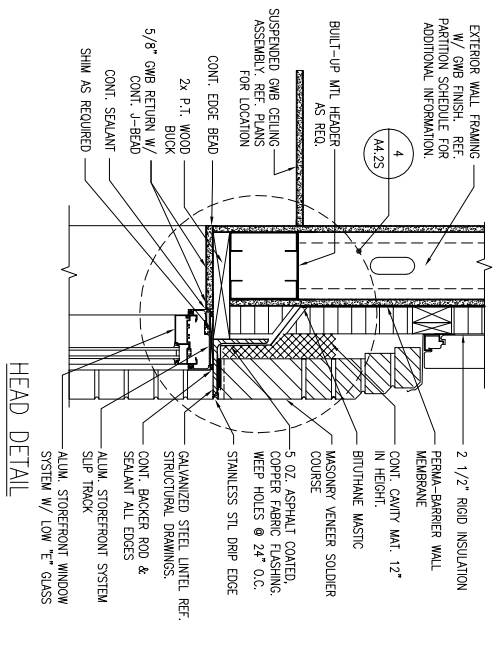


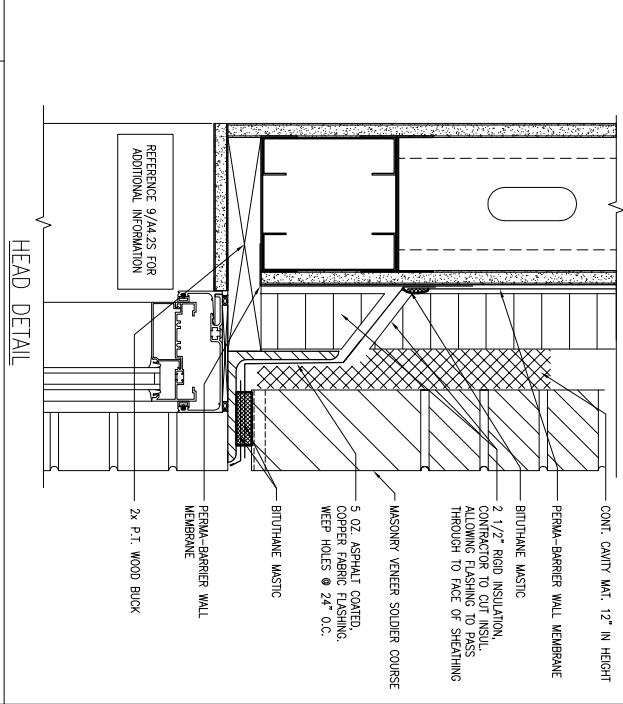
**5 WINDOW TYP. "A" ELEVATIONS AND SECTIONS**  
 REFERENCED FROM:  
 SCALE: 1/2" = 1'-0"



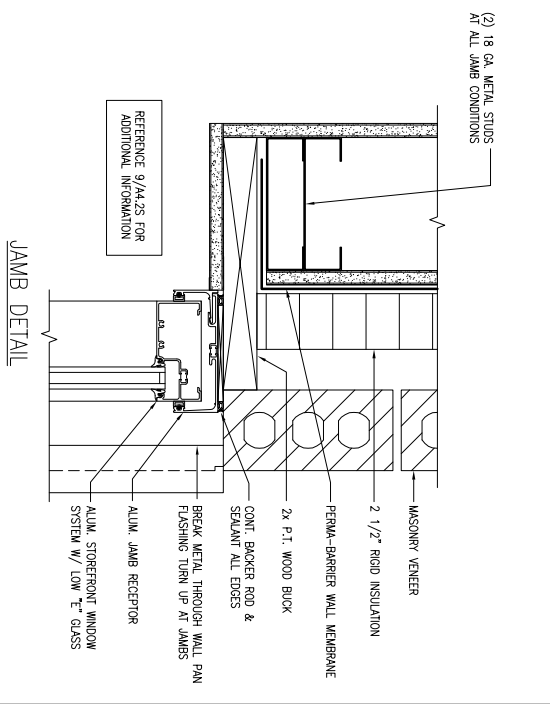
**9 TYP. WINDOW & CURTAIN WALL OPENINGS HEAD AND JAMB FLASHING DETAILS**  
 REFERENCED FROM:  
 SCALE: 3/4" = 1'-0"



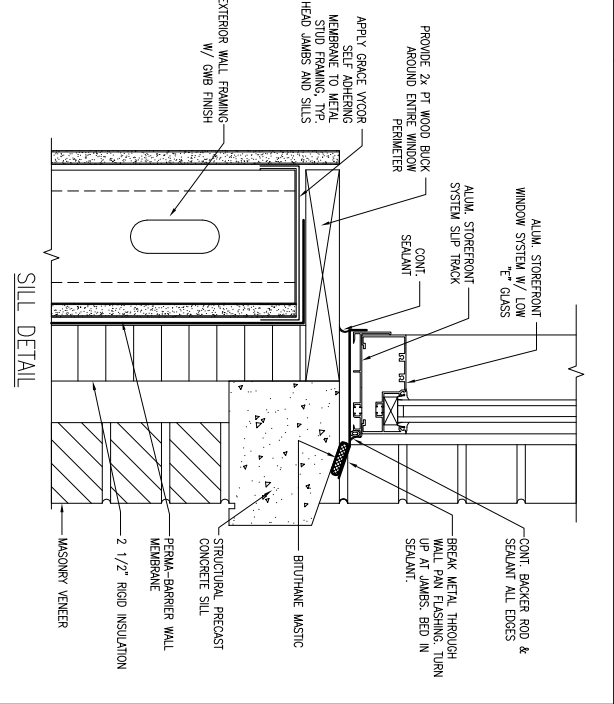
**11 TYPICAL - HEAD, JAMB AND SILL DETAILS**  
 REFERENCED FROM:  
 SCALE: 1/2" = 1'-0"



**4 ENLARGED HEAD DETAIL**  
 REFERENCED FROM:  
 SCALE: 3/4" = 1'-0"



**8 ENLARGED JAMB DETAIL**  
 REFERENCED FROM:  
 SCALE: 3/4" = 1'-0"



**12 BARRIER MEMBRANE AT SILL DETAIL**  
 REFERENCED FROM:  
 SCALE: 3/4" = 1'-0"

REVISIONS	
Description:	Date:

Owner:  
**BAYSIDE VENTURES, LLC**  
 50 PORTLAND PIER SUITE 400  
 PORTLAND, MAINE 04101

**63 MARGINAL WAY MULTI-TENANT OFFICE BUILDING**  
 63 MARGINAL WAY  
 PORTLAND, MAINE 04101

494 Portland Avenue  
 Portland, ME 04101  
 Phone: (207) 774-4441  
 Fax: (207) 774-4016  
 www.CWSarch.com

**CWS Architects**

Drawing Title:  
**WINDOW ELEVATIONS & DETAILS**  
 Scale: AS NOTED  
 Date: Progress 12/09/09  
 CWS Proj. No.: 04430.hmo

Drawing Number:  
**A4.2S**