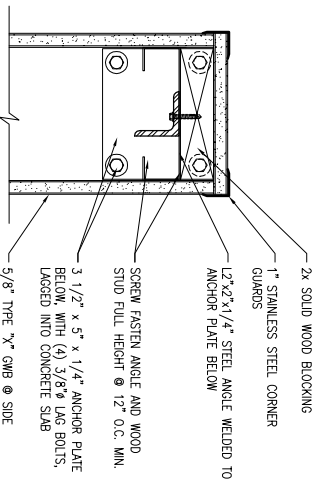


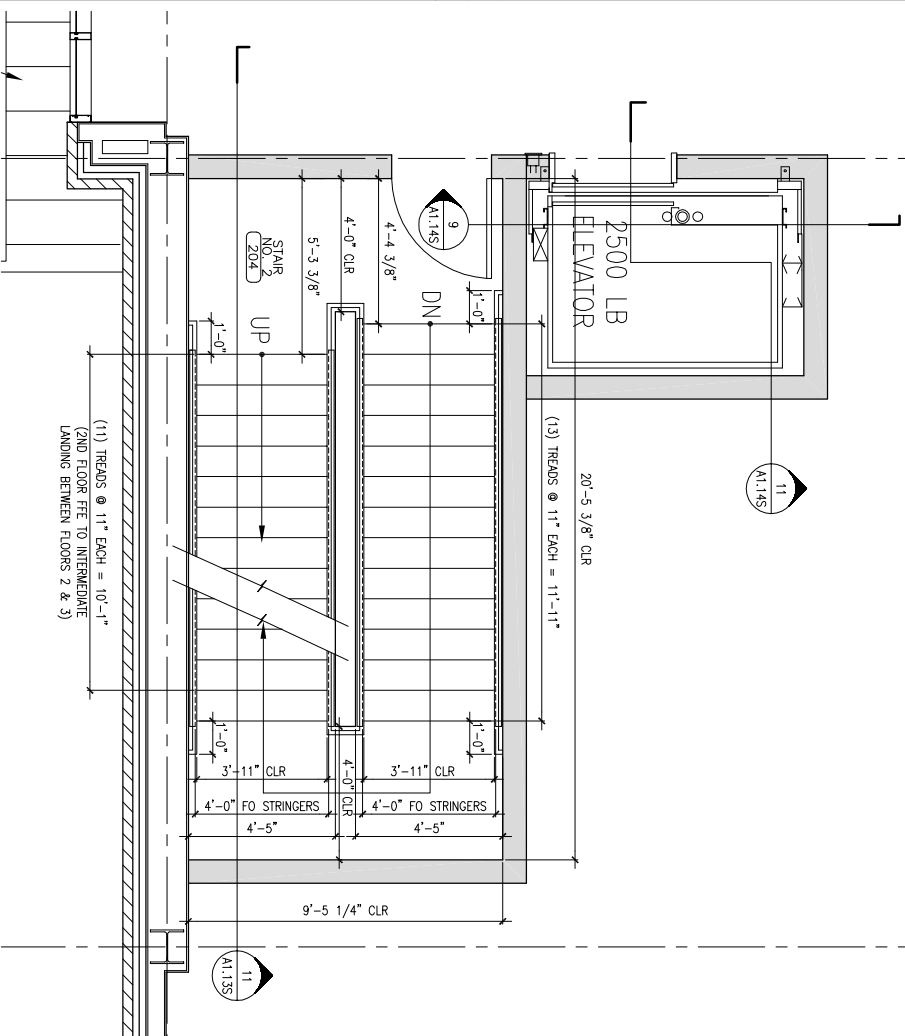
**1** DETAIL @ TOP OF HALFALL

REFERENCED FROM: SCALE: 3" = 1'-0"



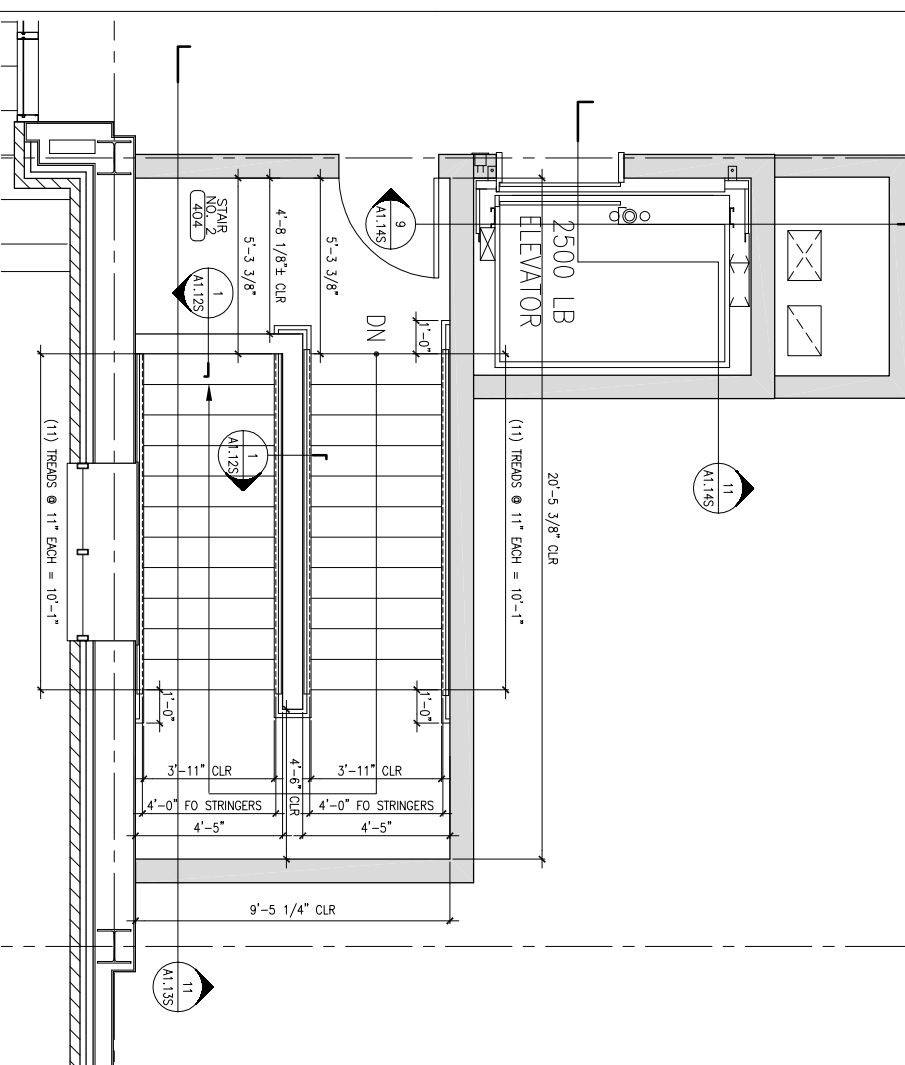
**4** SUPPORT DETAIL @ END OF HALFALL

REFERENCED FROM: SCALE: 3" = 1'-0"



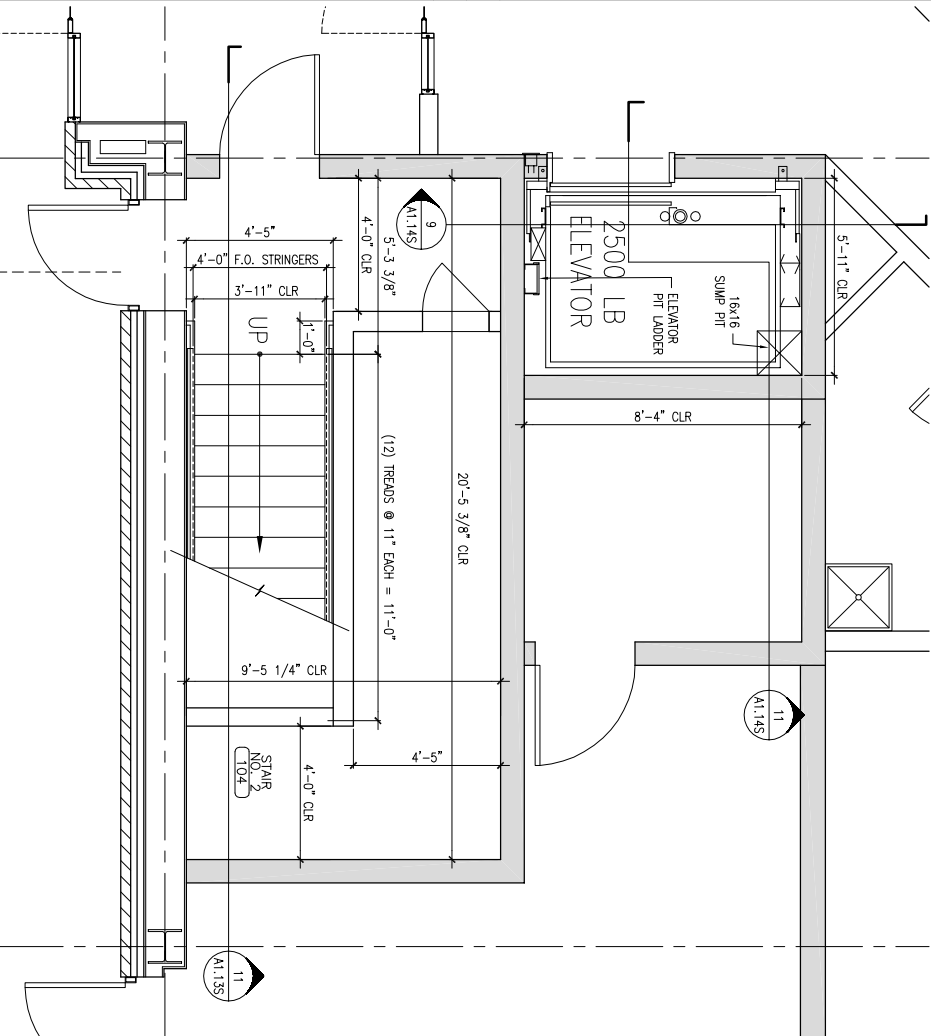
**5** ENLARGED PLAN @ STAIR NO. 2 - SECOND FLOOR

REFERENCED FROM: SCALE: 3/8" = 1'-0"



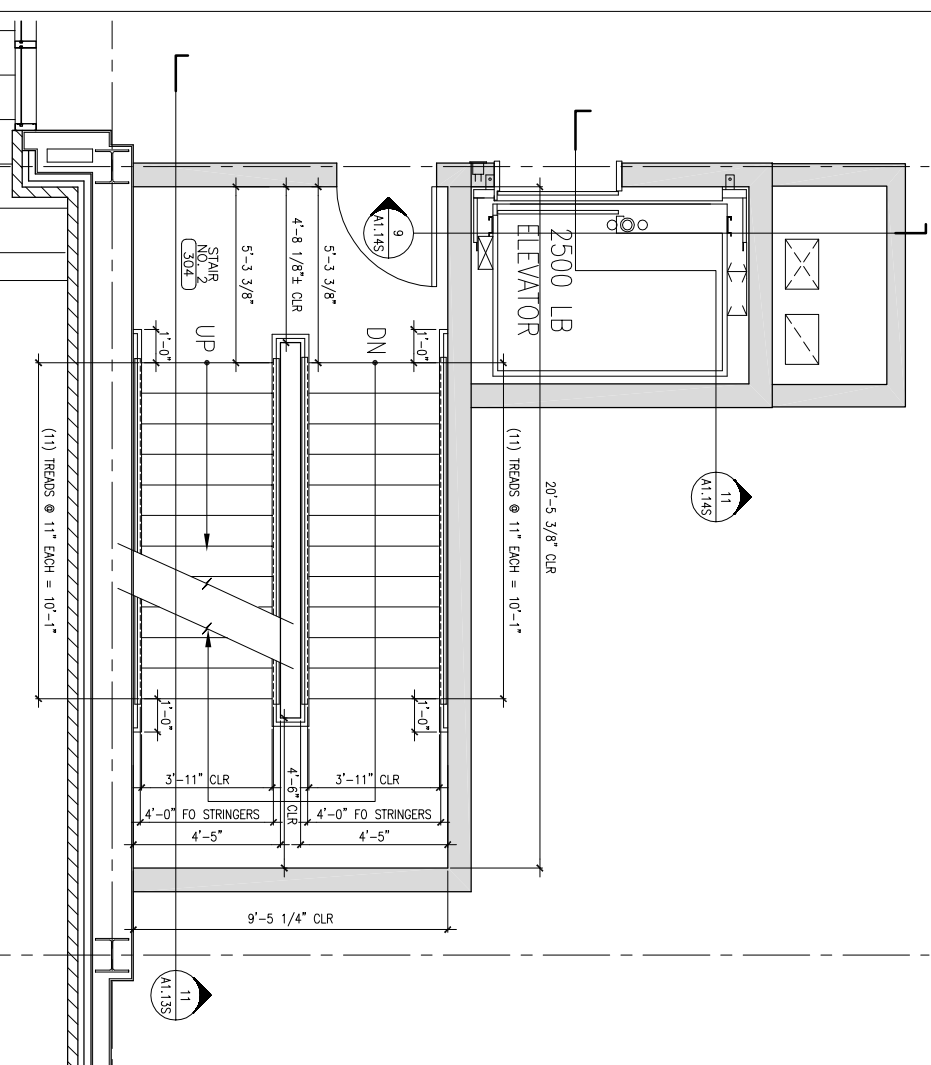
**6** ENLARGED PLAN @ STAIR NO. 2 - FOURTH FLOOR

REFERENCED FROM: SCALE: 3/8" = 1'-0"



**11** ENLARGED PLAN @ STAIR NO. 2 - FIRST FLOOR

REFERENCED FROM: SCALE: 3/8" = 1'-0"



**12** ENLARGED PLAN @ STAIR NO. 2 - THIRD FLOOR

REFERENCED FROM: SCALE: 3/8" = 1'-0"

**10** NOT USED  
REFERENCED FROM: SCALE:

**7** NOT USED  
REFERENCED FROM: SCALE:

REVISIONS:	
Description:	Date:

Owner:  
**BAYSIDE VENTURES, LLC**  
50 PORTLAND PIER SUITE 400  
PORTLAND, MAINE 04101

**63 MARGINAL WAY MULTI-TENANT OFFICE BUILDING**  
63 MARGINAL WAY  
PORTLAND, MAINE 04101

**CWS Architects**  
454 Cumberland Avenue  
Portland, ME 04101  
Phone: (207) 774-4441  
Fax: (207) 774-4016  
www.CWSarch.com

**A1.12S**  
Drawing Number:

Drawing Title:  
**STAIR NO. 2 AND ELEVATOR ENLARGED PLANS AND DETAILS**  
Scale: AS NOTED  
Date: Progress 12/05/05  
CWS Proj. No.: 04430.hmo