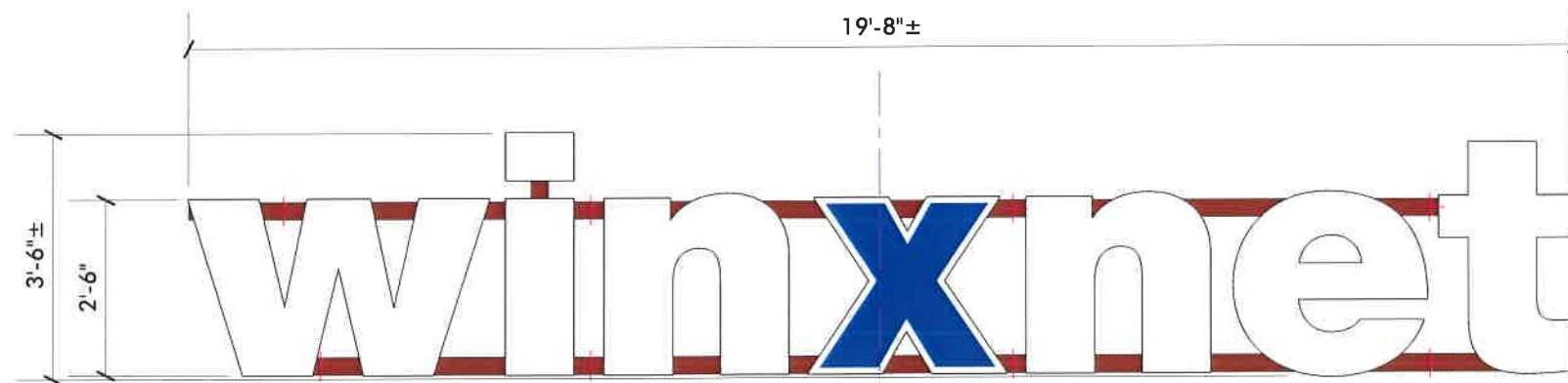


END VIEW
NTS



FACE-LIT FABRICATED WALL LETTERS

SCALE: 3/8" = 1'-0"

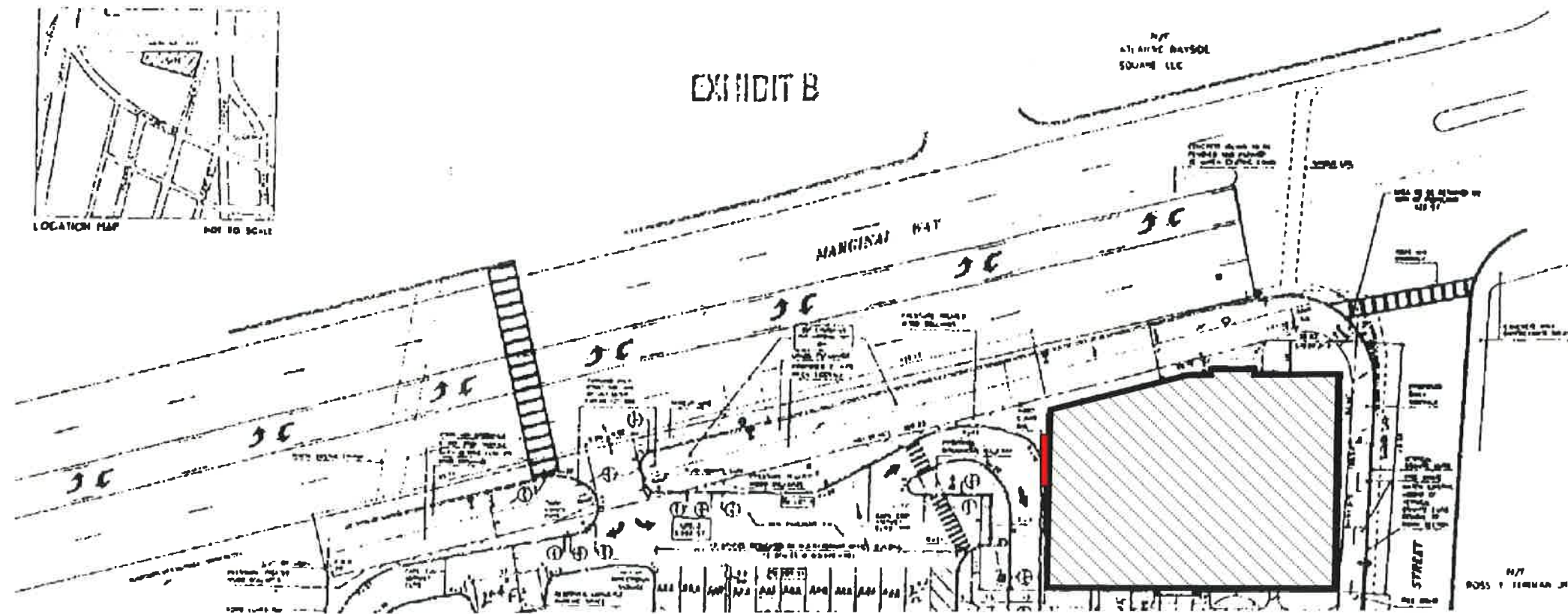
SIGN AREA=68.8 SQ. FT

LED FACE-LIT FABRICATED ALUMINUM/ACRYLIC LETTERS (WHITE), 3" x 2" RECT.
ALUMINUM RAILS PAINTED TO MATCH WALL, MAP OAKLEAF BROWN [10C-4D]

GSP 'TRANS OLYMPIC BLUE' [230-57] VINYL OVERLAY AT "X"

120 VOLT PRIMARY ELECTRICAL

1/4" THREADED STAINLESS STEEL ROD MOUNTING, EPOXY-SET IN BRICK, MINIMUM (8)
MOUNTING LOCATIONS (VERIFY EXISTING WALL CONSTRUCTION)



SITE LOCATION PLAN

NO SCALE

**WinXNet
18009**

PERMIT DRAWING

Location: 63 Marginal Way

Portland, ME

Drawing No.: 1 of 2

Drawn by: ML Rep.: PM

Date: 03.20.2014

Lead No.: FL020858

Gen Ref.: 9091



Neokraft Signs Inc. <http://www.neokraft.com>
686 Main Street T:207.782.9654 F:782.0009
Lewiston, Maine 04240 1.800.339.2258

© COPYRIGHT 2014, BY NEOKRAFT SIGNS, INC.