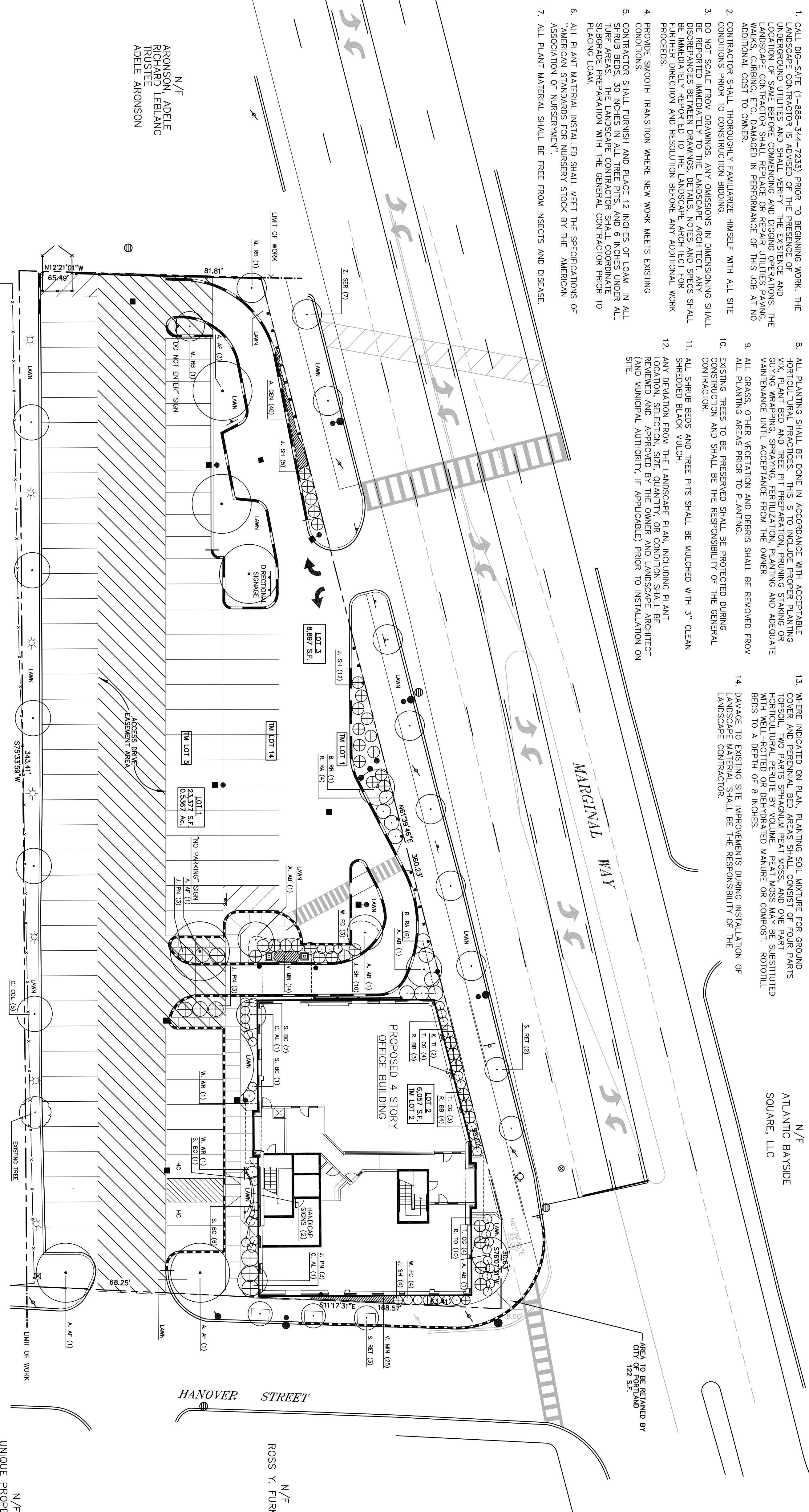
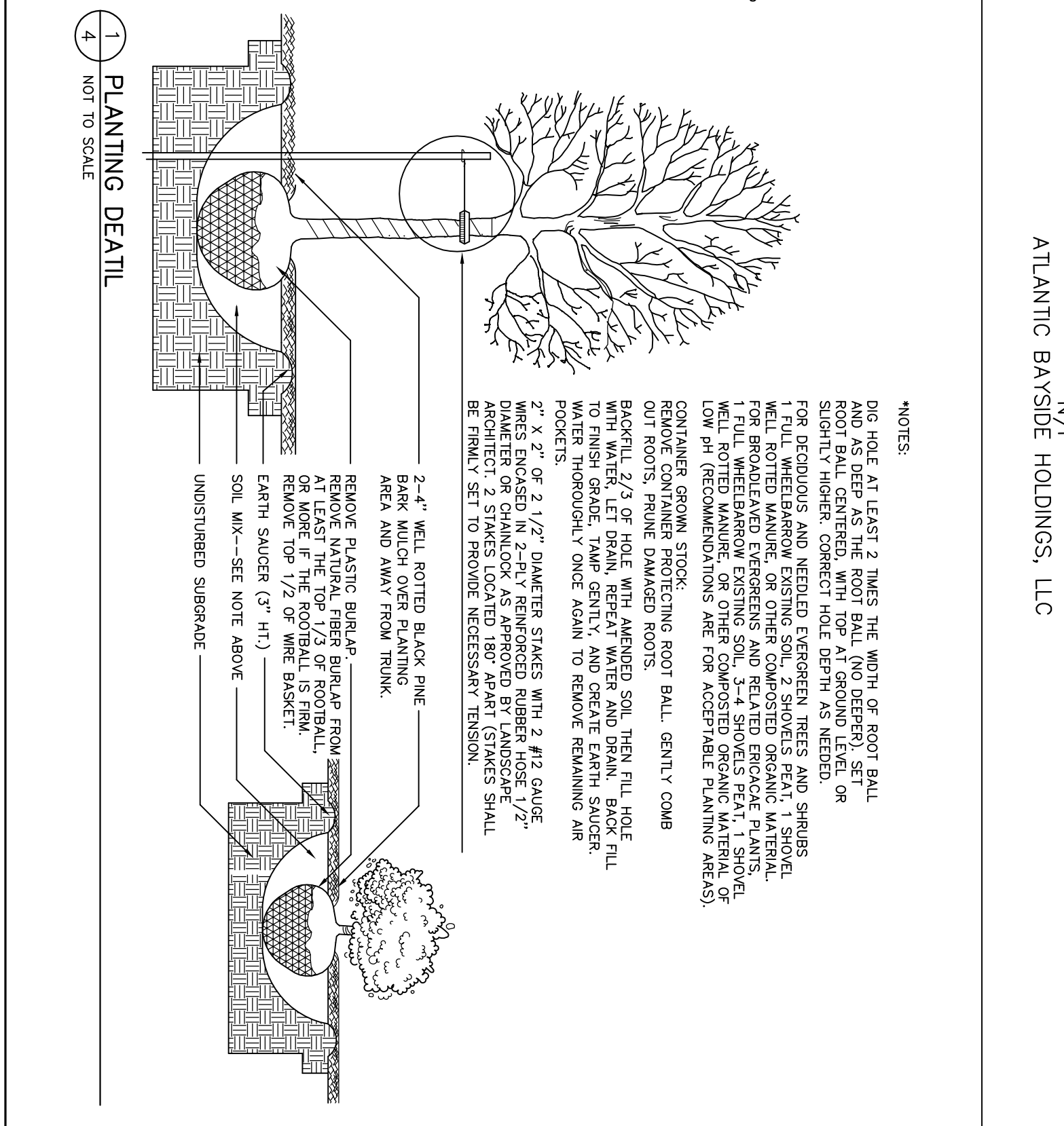


**GENERAL NOTES**

1. CALL DIG-SAFE (1-888-344-7233) PRIOR TO BEGINNING WORK. THE LANDSCAPE CONTRACTOR IS ADVISED OF THE PRESENCE OF UNDERGROUND UTILITIES AND SHALL BE RESPONSIBLE FOR OBTAINING AND LOCATING SAME BEFORE COMMENCING ANY EXCAVATIONS, THE LANDSCAPE CONTRACTOR SHALL REPAIR OR REPLACE UTILITIES PAVING, WALKS, CURBING, ETC. DAMAGED IN PERFORMANCE OF THIS JOB AT NO ADDITIONAL COST TO OWNER.
2. CONTRACTOR SHALL THOROUGHLY FAMILIARIZE HIMSELF WITH ALL SITE CONDITIONS PRIOR TO CONSTRUCTION BIDDING.
3. DO NOT SCALE FROM DRAWINGS. ANY OMISSIONS IN DIMENSIONING SHALL BE REPORTED IMMEDIATELY TO THE LANDSCAPE ARCHITECT. ANY DISCREPANCIES BETWEEN DRAWINGS, DETAILS, NOTES AND SPECS SHALL BE REPORTED IMMEDIATELY TO THE LANDSCAPE ARCHITECT. ANY DISCREPANCIES BETWEEN DRAWINGS, DETAILS, NOTES AND SPECS SHALL BE REPORTED IMMEDIATELY TO THE LANDSCAPE ARCHITECT. ANY DISCREPANCIES BETWEEN DRAWINGS, DETAILS, NOTES AND SPECS SHALL BE REPORTED IMMEDIATELY TO THE LANDSCAPE ARCHITECT.
4. PROPOSE SMOOTH TRANSITION WHERE NEW WORK MEETS EXISTING CONDITIONS.
5. CONTRACTORS SHALL FURNISH AND PLACE 12 INCHES OF LOAM IN ALL SHRUB BEDS, 30 INCHES IN ALL TREE PITS, AND 6 INCHES UNDER ALL TURF AREAS. THE LANDSCAPE CONTRACTOR SHALL COORDINATE SUBGRADE PREPARATION WITH THE GENERAL CONTRACTOR PRIOR TO PAVING LOAM.
6. ALL PLANT MATERIAL INSTALLED SHALL MEET THE SPECIFICATIONS OF "AMERICAN STANDARDS FOR NURSERY STOCK BY THE AMERICAN ASSOCIATION OF NURSERMEN".
7. ALL PLANT MATERIAL SHALL BE FREE FROM INSECTS AND DISEASE.
8. ALL PLANTING SHALL BE DONE IN ACCORDANCE WITH ACCEPTABLE HORTICULTURAL PRACTICES. THIS IS TO INCLUDE PROPER PLANTING PROCEDURES, PROPER WATERING, PROPER FERTILIZATION, PROPER MAINTENANCE UNTIL ACCEPTANCE FROM THE OWNER.
9. ALL GRASS, OTHER VEGETATION AND DEBRIS SHALL BE REMOVED FROM ALL PLANTING AREAS PRIOR TO PLANTING.
10. EXISTING TREES TO BE PRESERVED SHALL BE PROTECTED DURING CONSTRUCTION.
11. ALL SHRUB BEDS AND TREE PITS SHALL BE MULCHED WITH 3" CLEAN SHREDED BLACK MULCH.
12. ANY DEVIATION FROM THE LANDSCAPE PLAN, INCLUDING PLANT LOCATION, SELECTION, SIZE, QUANTITY, OR CONDITION SHALL BE APPROVED IN WRITING BY THE LANDSCAPE ARCHITECT AND THE MUNICIPAL AUTHORITY, IF APPLICABLE, PRIOR TO INSTALLATION ON SITE.
13. WHERE INDICATED ON PLAN, PLANTING SOIL MIXTURE FOR GROUND COVER AND PERENNIAL BED AREAS SHALL CONSIST OF FOUR PARTS HORTICULTURAL PERLITE BY VOLUME. PEAT MOSS MAY BE SUBSTITUTED WITH WELL-ROTTED OR DEHYDRATED MANURE OR COMPOST. ROTOTILL BEDS TO A DEPTH OF 8 INCHES.
14. DAMAGE TO EXISTING SITE IMPROVEMENTS DURING INSTALLATION OF LANDSCAPE MATERIAL SHALL BE THE RESPONSIBILITY OF THE LANDSCAPE CONTRACTOR.



KEY	QTY	BOTANICAL NAME	COMMON NAME	SIZE
<b>PLANT LIST</b>				
<b>TREES</b>				
A. AB	4	AMELANCHIER ABORIA 'AUTUMN BRILLIANCE'	AUTUMN BRILLIANCE SERVICEBERRY	2"-2.5" CAL.
A. AF	6	AGER RUBRUM 'AUTUMN FLAME'	AUTUMN FLAME MAPLE	2"-2.5" CAL.
B. RR	1	BETULA PAPERIFERA 'REMAISSANCE REFLECTION'	REMAISSANCE REFLECTION WHITE BIRCH	8"-10" HT. CLUMP
C. AL	2	CORNUS ALERNAFOUA	PAGODA DOGWOOD	2"-2.5" CAL.
C. COL	5	CORYLUS COULNANA	TURKISH FILBERT	2" CAL.
S. RET	5	SYRINGA RETICULATA	JAPANESE TREE LILAC	2"-2.5" CAL.
Z. SER	7	ZELKOVA SERATA 'WIRELESS'	WIRELESS ZELKOVA	2"-2.5" CAL.
M. RB	2	MALUS 'RED BARON'	RED BARON FLOWERING CRAB	2"-2.5" CAL.
<b>SHRUBS</b>				
J. SH	31	JUNIPERUS SOJAMATA 'HOLGER'	HOLGER JUNIPER	#5 CONT
J. PN	9	JUNIPERUS PROCUMBENS 'NANA'	DWARF JAPANESE GARDEN JUNIPER	#3 CONT
K. TI	2	KALIA 'TINKERBELL'	TINKERBELL KALIA	#5 CONT
R. BB	7	RHOODOENDRON 'BADEN BADEN'	BADEN BADEN RHOODOENDRON	#3 CONT
R. TO	10	RHOODOENDRON 'TOWHEAD'	TOWHEAD RHOODOENDRON	#3 CONT
R. RA	10	ROSA RUOSA 'ALBA'	WHITE ROUGSA ROSE	#3 CONT
S. BC	15	SPIRAEA BUWALDA 'CRISPA'	CRISPA SPIRAEA	#3 CONT
W. FC	7	WEIGELA FLORIDA 'CARNIVAL'	CARNIVAL WEIGELA	#3 CONT
W. WR	2	WEIGELA FLORIDA 'WINE & ROSES'	WINE & ROSES WEIGELA	#5 CONT
T. CO	11	TAXUS CUSPIDATA 'GREENWAYE'	GREENWAYE YEW	2"-2.5" HT.
<b>GROUND COVER</b>				
V. MIN	4	VINCA MINOR	PERIWINKLE	10 CLUMP FLAT
A. GEN	2	AJUGA GENEVENSIS	BIGLE WEED	20 CLUMP FLAT



LEGEND	EXISTING	PROPOSED
PROPERTY LINE	---	---
IRON PIPE/ROD FOUND	—●—	—●—
UTILITY POLE	—○—	—○—
SITE LIGHT FIXTURE	—●—	—●—
STREET LIGHT FIXTURE	—●—	—●—
BUILDING LIGHT FIXTURE	—○—	—○—
MANHOLE	—○—	—○—
CATCH BASIN	—○—	—○—
FIRE HYDRANT	—○—	—○—
CURBING	—	—
VERTICAL FACE GRANITE CURB	—	—
CARE GOD ASPHALT CURB	—	—
CHANALKUR FENCE	—	—
SIGN	—	—
ELECTRIC METER	—	—
DECIDUOUS TREE/SHRUB	—	—
EVERGREEN TREE/SHRUB	—	—

ISSUED FOR PERMITTING  
1/11/2005

Revisions:  
 AUG. 30, 2005: ENGINEER REVIEW  
 SEPT. 28, 2005: STAFF REVIEW  
 OCT. 20, 2005: STAFF REVIEW  
 NOV. 14, 2005: CONDITIONS OF APPROVAL

Preparation or reuse of this drawing without the expressed written consent of Mitchell & Associates is prohibited.

Title: **PLANTING PLAN**

Date: **JUNE 30, 2005**

Scale: 1"=20'

North:

Sheet No.: **4**

**MULTI-TENANT OFFICE BUILDING**

63 Marginal Way  
Portland, Maine

Prepared For:  
**APTACANT:**  
**BAYSIDE VENTURES, LLC**  
 50 Portland Pier, Suite 400  
 Portland, Maine 04101

Prepared By:  
**MITCHELL & ASSOCIATES**  
 70 Center Street  
 Portland, Maine 04101  
 Tel: (207) 774-4827