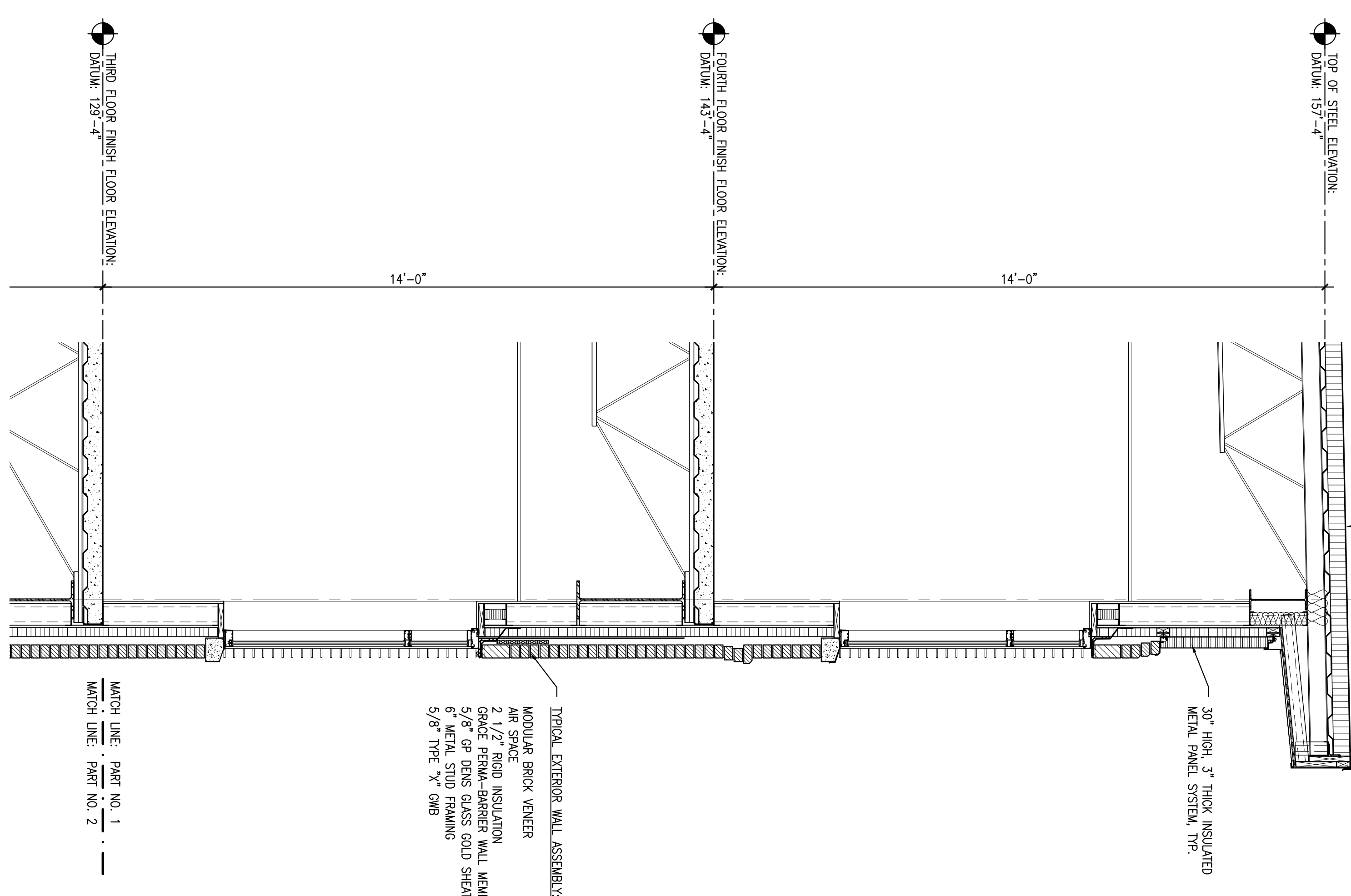


COL

TYPICAL ROOF ASSEMBLY:
EPDM ROOFING MEMBRANE AND INSULATION SYSTEM
REFERENCE STRUCTURAL DRAWINGS FOR INFORMATION
PERTAINING TO ROOF DECKING AND BAY JOIST FRAMING



30" HIGH, 3" THICK INSULATED METAL PANEL SYSTEM, TYP.

TYPICAL EXTERIOR WALL ASSEMBLY:
MODULAR BRICK VENEER
AIR SPACE
2 1/2" RIGID INSULATION
GRADE PERMA-BARRIER WALL MEMBRANE
5/8" GP DENS GLASS GOLD SHEATHING
5/8" TYPE "X" GWB

MATCH LINE: PART NO. 1
MATCH LINE: PART NO. 2

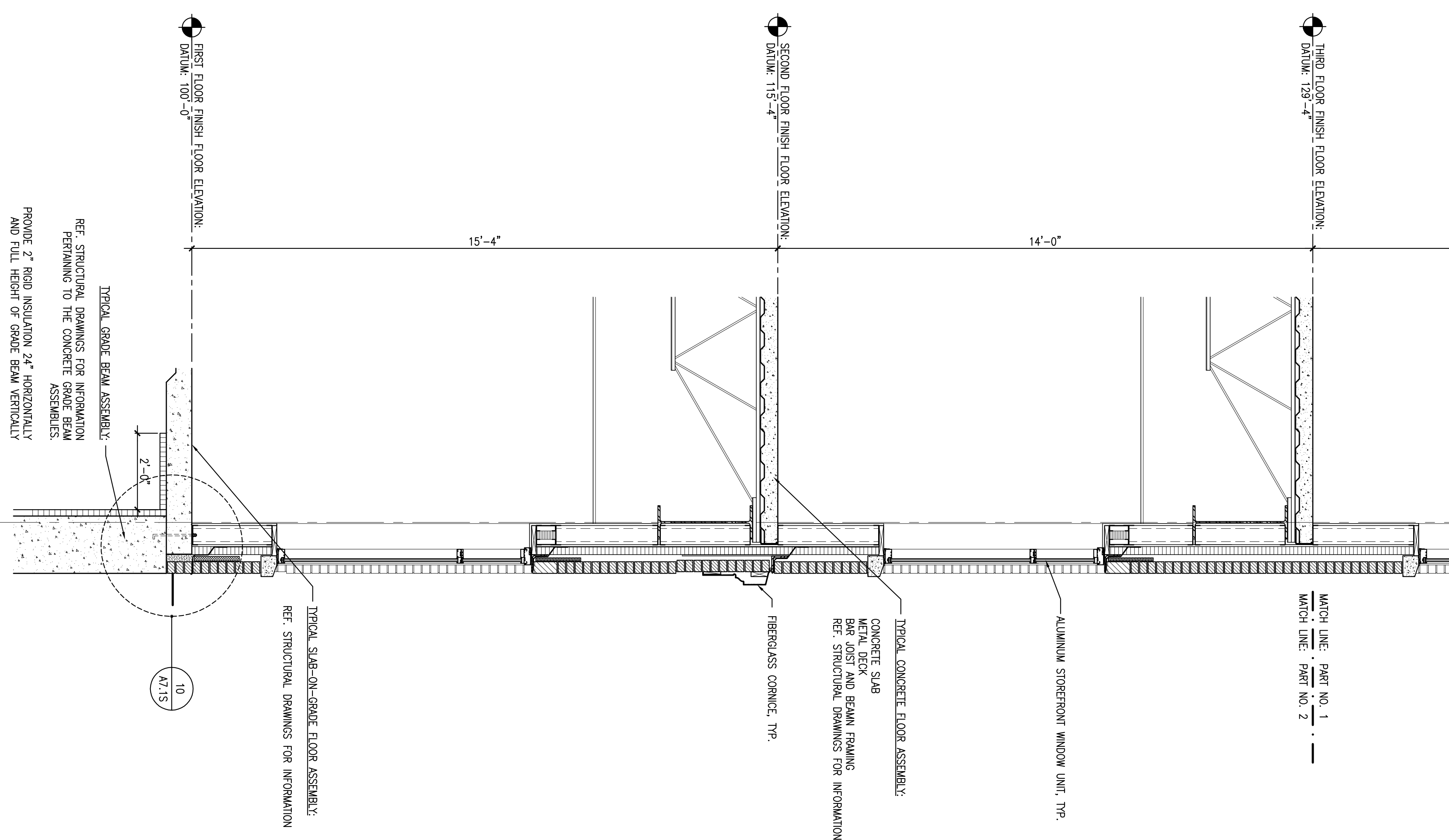
2 WALL SECTION

SCALE: 1/2" = 1'-0"

1 NOTUSED

REFERENCED FROM:
SCALE:

14'-0"



ALUMINUM STOREFRONT WINDOW UNIT, TYP.

TYPICAL CONCRETE FLOOR ASSEMBLY:
CONCRETE SLAB
METAL DECK AND BEAM FRAMING
REF. STRUCTURAL DRAWINGS FOR INFORMATION

FIBERGLASS CORNICE, TYP.

TYPICAL SLAB-ON-GRADE FLOOR ASSEMBLY:
REF. STRUCTURAL DRAWINGS FOR INFORMATION

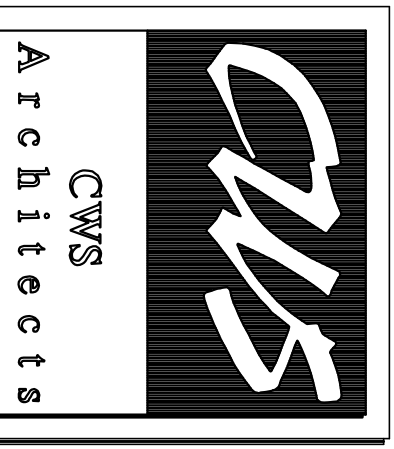
TYPICAL GRADE BEAM ASSEMBLY:
REF. STRUCTURAL DRAWINGS FOR INFORMATION
PERTAINING TO THE CONCRETE BEAM ASSEMBLIES.
PROVIDE 2" RIGID INSULATION 24" HORIZONTALLY
AND FULL HEIGHT OF GRADE BEAM VERTICALLY

10
A7.1S

3 WALL SECTION

SCALE: 1/2" = 1'-0"

REFERENCED FROM:



434 Cumberland Avenue
Portland, ME 04101
Phone: (207) 774-4441
Fax: (207) 774-4016
www.CWSarch.com

**63 MARGINAL WAY
MULTI-TENANT
OFFICE BUILDING - SHELL**
63 MARGINAL WAY
PORTLAND, MAINE
04101

**BAYSIDE
VENTURES, LLC**
50 PORTLAND PIER
SUITE 400
PORTLAND, MAINE
04101

REVISIONS:	
Description:	Date:

Drawing Title:
WALL SECTIONS
Scale: 1/2" = 1'-0"
Date: Progress 11/11/05
CWS Proj. No.: 04430.hmo

Drawing Number:
A6.2S