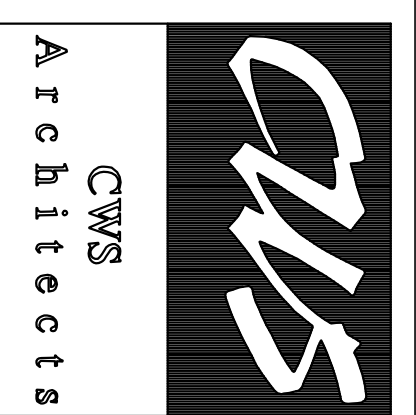


- EXTERIOR ELEVATION NOTES:
- 01 LAYED MODULAR BRICK CANTY WALL ASSEMBLY (BRICK SIZE: 2 5/8" x 3 5/8" x 7 5/8")
  - 02 LAYED MODULAR BRICK CANTY WALL ASSEMBLY (BRICK SIZE: 2 5/8" x 3 5/8" x 7 5/8")
  - 03 CORBELLED ACCENT BRICK BAND (BRICK SIZE: 2 5/8" x 3 5/8" x 7 5/8")
  - 04 SOLDIER COURSE MODULAR BRICK CANTY WALL ASSEMBLY (BRICK SIZE: 2 5/8" x 3 5/8" x 7 5/8")
  - 05 PRECAST CONCRETE SILL, TYP.
  - 06 ALUMINUM STOREFRONT WINDOW UNIT W/ 1" LOW "E" GLAZING & 3/4" APPLIED MULLIONS.
  - 07 ALUMINUM CURTAINWALL ENTRY ASSEMBLY W/ 1" LOW "E" GLAZING & 3/4" APPLIED MULLIONS. HATCH PATTERN REPRESENTS INSULATED METAL SPANDREL PANEL, TYP.
  - 08 ALUMINUM TELLER WINDOW AND TELLER DRAWER W/ LOW "E" GLAZING.
  - 09 EXTERIOR INSULATED HOLLOW METAL DOOR UNIT.
  - 10 CENTRA FORMAWALL DIMENSION SERIES PANELS
  - 11 0.60 EPDM ROOFING MEMBRANE AND INSULATION SYSTEM
  - 12 BREAK METAL DRIP EDGE
  - 13 STANDING SEAM METAL ROOFING W/ COMPLETE BREAK METAL CLOSURE, DRIP EDGE & TRIM.
  - 14 WALL MOUNTED, WALL WASH LUMINAIRE, TYP.
  - 15 ROOF SOBREN, METAL TUBE STEEL STRUCTURE W/HORIZONTALLY ORIENTED METAL SING. TOP OF SCREEN TO BE 5'-6" ABOVE TOP OF MEMBRANE.
  - 16 EDON FIBERGLASS CORNICE (CR-211)
  - 17 RELIEFING ANGLE LOCATION (TYPICAL)

**D** EXTERIOR ELEVATION

SCALE: 3/16" = 1'-0"

ISSUED FOR FOUNDATION PERMITTING 11/11/2005



434 Canterbury Avenue  
Portland, ME 04101  
Phone: (207) 774-4441  
Fax: (207) 774-4016  
www.CWSarch.com

**63 MARGINAL WAY  
MULTI-TENANT  
OFFICE BUILDING - SHELL**  
63 MARGINAL WAY  
PORTLAND, MAINE  
04101

**BAYSIDE  
VENTURES, LLC**  
50 PORTLAND PIER  
SUITE 400  
PORTLAND, MAINE  
04101

REVISIONS:	
Description:	Date:

Drawing Title:  
**EXTERIOR ELEVATION**

Scale: 3/16" = 1'-0"

Date: Progress 11/11/05

CWS Proj. No.: 04430.hmo

Drawing Number:  
**A3.4S**