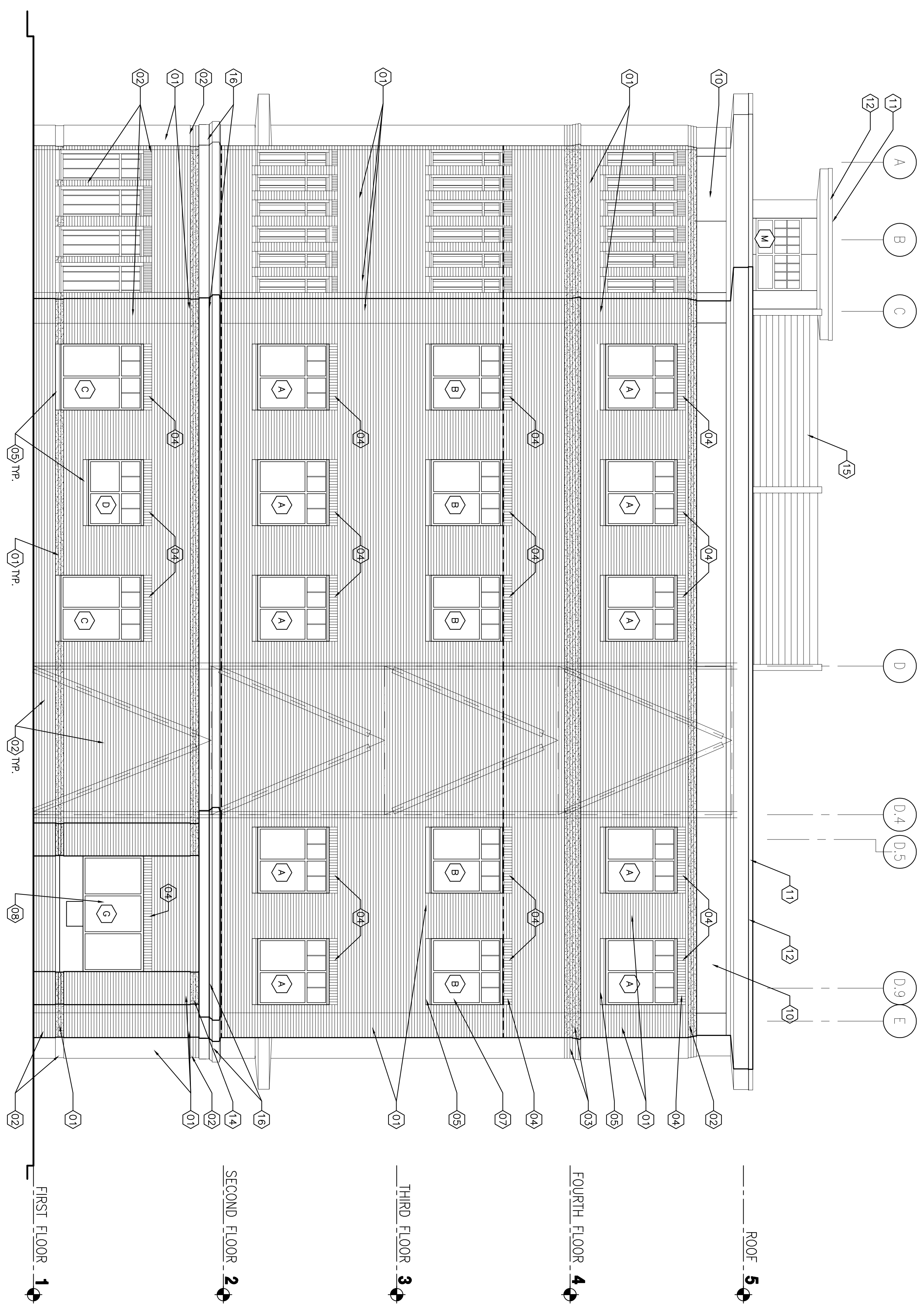


A EXTERIOR ELEVATION

SCALE: 3/16" = 1'-0"



EXTERIOR ELEVATION NOTES:

- 01 LATED MODULAR BRICK CAVITY WALL ASSEMBLY (BRICK SIZE: 2 5/8" x 3 5/8" x 7 5/8")
- 02 LATED MODULAR BRICK CAVITY WALL ASSEMBLY (BRICK SIZE: 2 5/8" x 3 5/8" x 7 5/8")
- 03 CORBELLED ACCENT BRICK BAND COLOR NO. 2: GRAY RANGE
- 04 SOLIDER COURSE MODULAR BRICK CAVITY WALL ASSEMBLY - COLOR NO. 1: NARROW FLASHED RED RANGE
- 05 PRECAST CONCRETE SILL, TYP.
- 06 ALUMINUM STOREFRONT WINDOW UNIT W/ 1" LOW E" GLAZING & 3/4" APPLIED MULLIONS.
- 07 ALUMINUM CURTAINWALL ENTRY ASSEMBLY W/ 1" LOW E" GLAZING & 3/4" APPLIED MULLIONS. HATCH PATTERN REPRESENTS INSULATED METAL SPANDREL PANEL, TYP.
- 08 ALUMINUM TELLER WINDOW AND TELLER DRAWER W/ LOW E" GLAZING.
- 09 EXTERIOR INSULATED HOLLOW METAL DOOR UNIT.
- 10 CENTRIA FORMAWALL DIMENSION SERIES PANELS 0.60 EPDM ROOFING MEMBRANE AND INSULATION SYSTEM.
- 11 BREAK METAL DRIP EDGE
- 12 STANDING SEAM METAL ROOFING W/ COMPLETE BREAK METAL CLOSURE, DRIP EDGE & TRIM.
- 13 WALL MOUNTED, WALL WASH LUMINAIRE, TYP.
- 14 ROOF SCREEN: METAL TUBE STEEL STRUCTURE W/HORIZONTALLY ORIENTED METAL SIDING TOP OF SCREEN TO BE 5'-6" ABOVE TOP OF MEMBRANE.
- 15 EOOD FIBERGLASS CORNICE (CR-211)
- 16 RELIEFING ANGLE LOCATION (TYPICAL)

CWS Architects
 434 Cumberland Avenue
 Portland, ME 04101
 Phone: (207) 774-4441
 Fax: (207) 774-4016
 www.CWSarch.com

**63 MARGINAL WAY
 MULTI-TENANT
 OFFICE BUILDING - SHELL**
 63 MARGINAL WAY
 PORTLAND, MAINE
 04101

Owner:
BAYSIDE VENTURES, LLC
 50 PORTLAND PIER
 SUITE 400
 PORTLAND, MAINE
 04101

REVISIONS:	
Description:	Date:

Drawing Title:
EXTERIOR ELEVATION

Scale: 3/16" = 1'-0"

Date: Progress 11/11/05

CWS Proj. No.: 04430.hmo

Drawing Number:
A3.1S