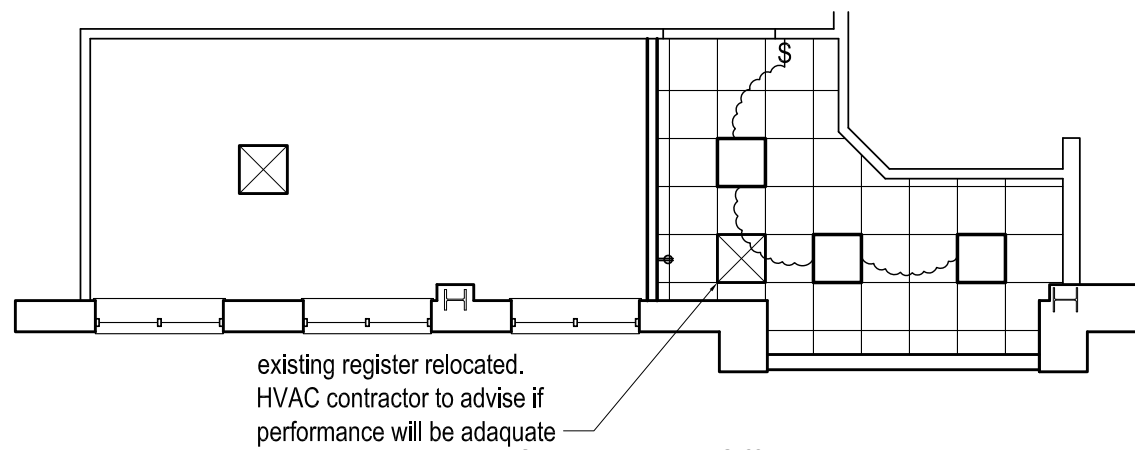
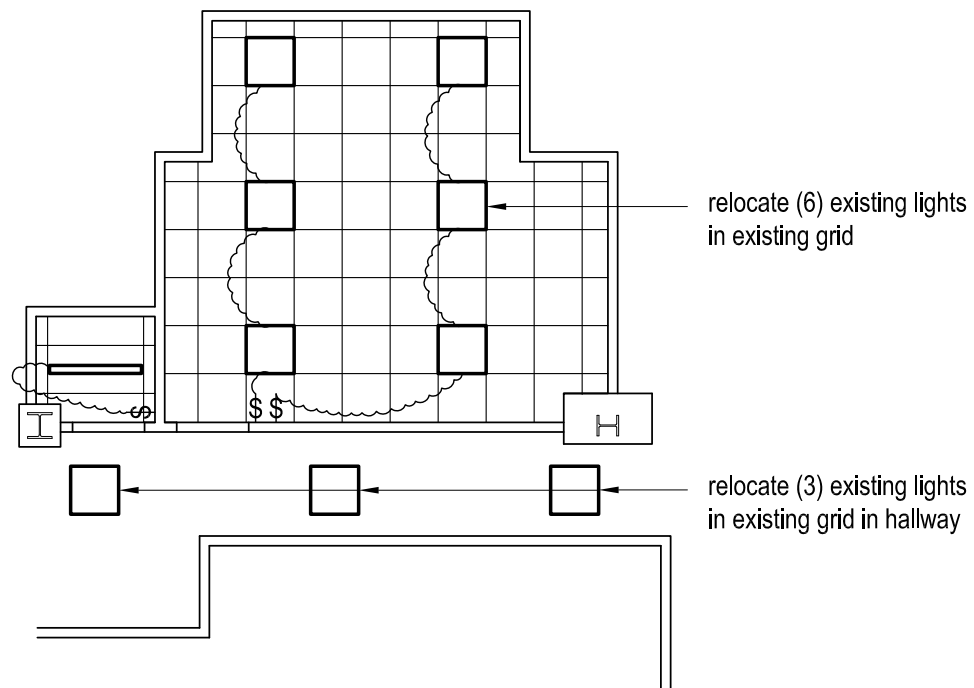


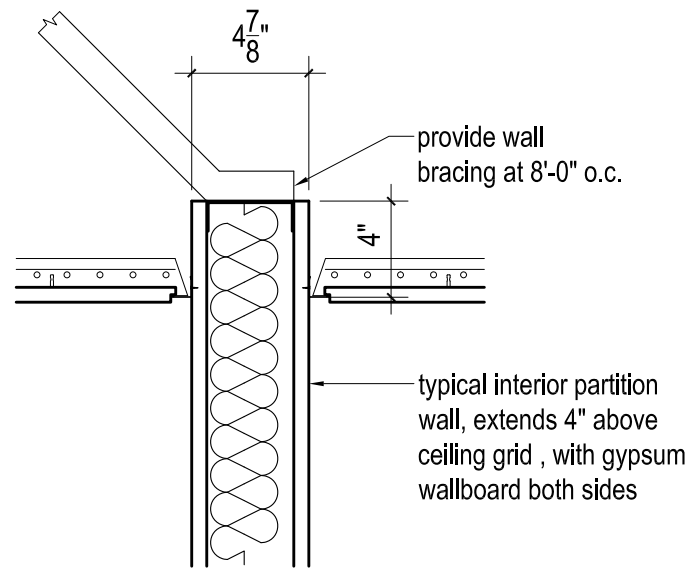
1 Ceiling Plan, Offices 1 and 2
1/8" = 1'-0"



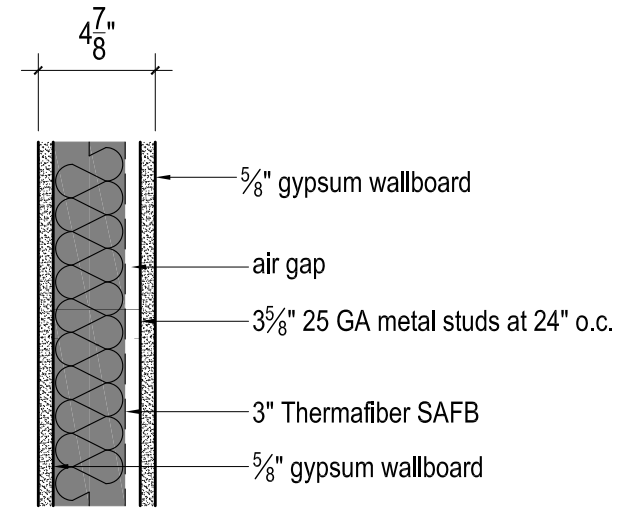
2 Ceiling Plan, Office 3
1/8" = 1'-0"



3 Ceiling Plan, Inventory and server
1/8" = 1'-0"



2 Ceiling Detail
1/2" = 1'-0"



Notes:

1. Provide minimum 1/4" bead of acoustic sealant at junction of track and subfloor. Set drywall with maximum 1/8" gap to subfloor in continuous bed of sealant
2. seal penetrations in wall with acoustic putty or sealant
3. offset wall penetrations by 1 bay minimum
4. provide level 4 finish per usg handbook

USG Fire-Resistant Assemblies, UL Design U419 or U465
Acoustical Performance
STC 49, Test Number SA-870717, Reference: SA 700, SA920 A-1

1 Partition Wall Detail
1/2" = 1'-0"