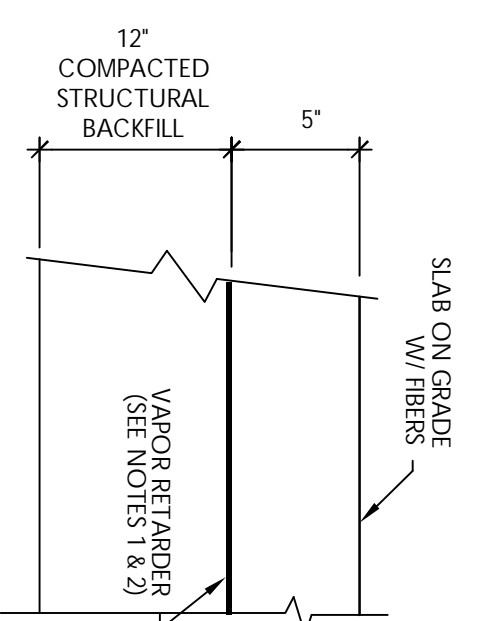


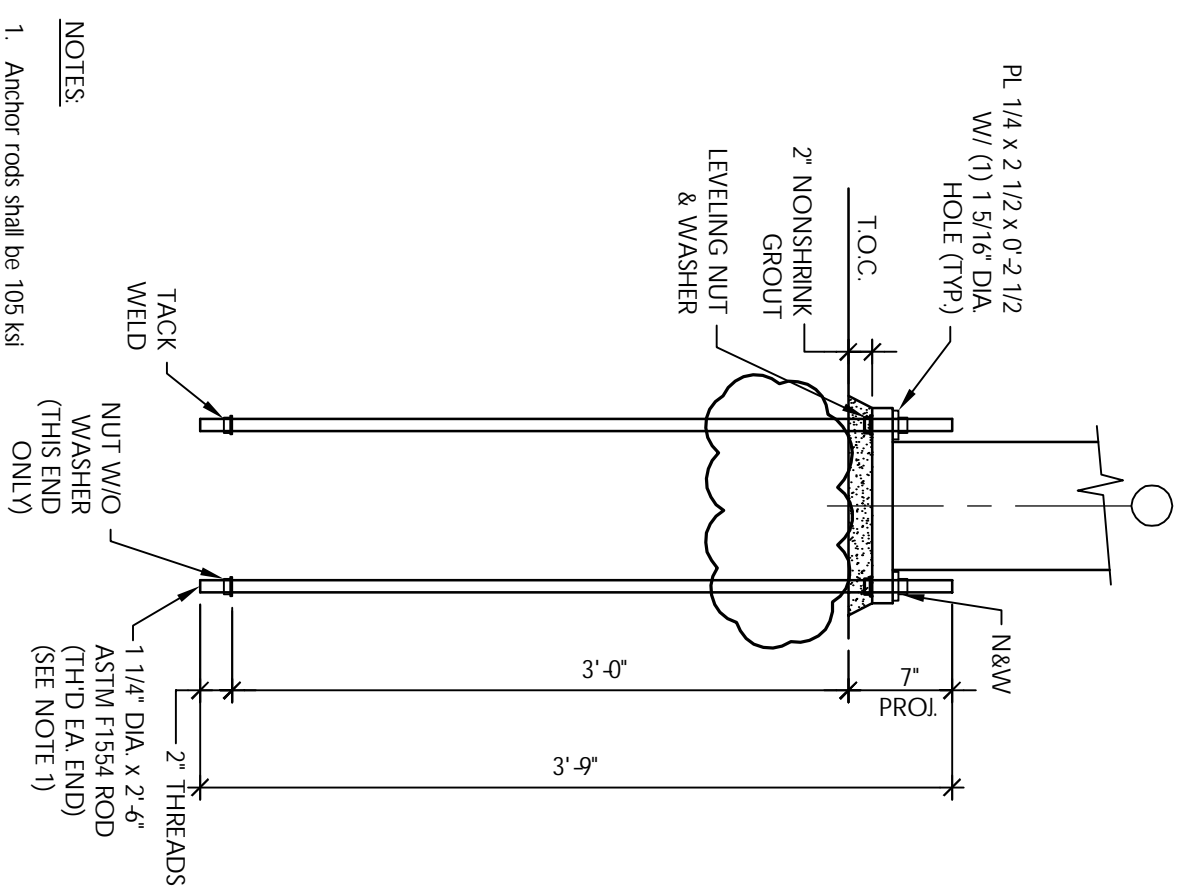
- NOTES:
- Control joints shall be straight ($\pm 1/4"$ tolerance).
 - Spalling between control joints shall not exceed 15'-0" o.c. (UON).
 - Sawcut control joints shall be cut within 12 hours after concrete placement but shall not dislodge aggregate during cutting.

BI TYPICAL CONCRETE SLAB CONTROL JOINT
S30 1" = 1'-0"



- NOTES:
- Types all lights, install pipe bands, and seal all vapor retarder penetrations per manufacturer's recommendations. Verify that permeance of vapor retarder conforms to the limitations and requirements set by the manufacturer (laminating floor finish materials).
 - Vapor retarder shall be Sigco-Vaprap (15 mil thickness) by Sigco Industries, LLC (Tel: 207-775-5764) polyolefin geomembrane, or Soodshield V9-15 (Tel: 888-275-2672) polyolefin geomembrane or approved equal.
 - Water shall not be added to concrete for slab at project site. Remove bleedwater prior to troweling. Avoid over-troweling during finishing.
 - Construct wall barriers if winds greater than 10 mph are expected either during concrete placement or within 24 hours after placement.
 - Continuous moist curing of slab surface shall begin as soon as possible after placement (within 12 hours) and continue for 7 days. Disabling curing compound may be used only if it is verified to be compatible with floor finish materials prior to slab installation.

EI TYPICAL SLAB ON GRADE (SOG) DETAIL
S30 1" = 1'-0"

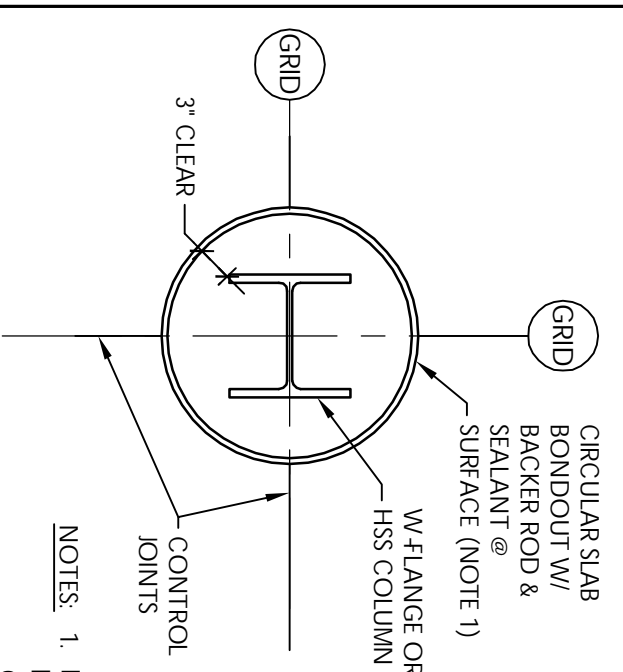


- NOTES:
- Anchor rods shall be 105 ksi conforming to ASTM F1554.
 - Anchor rod placement shall conform to the ASC Code of Standard Practice (Tolerance: Typical).

HI TYPICAL ANCHOR BOLT
S30 1" = 1'-0"

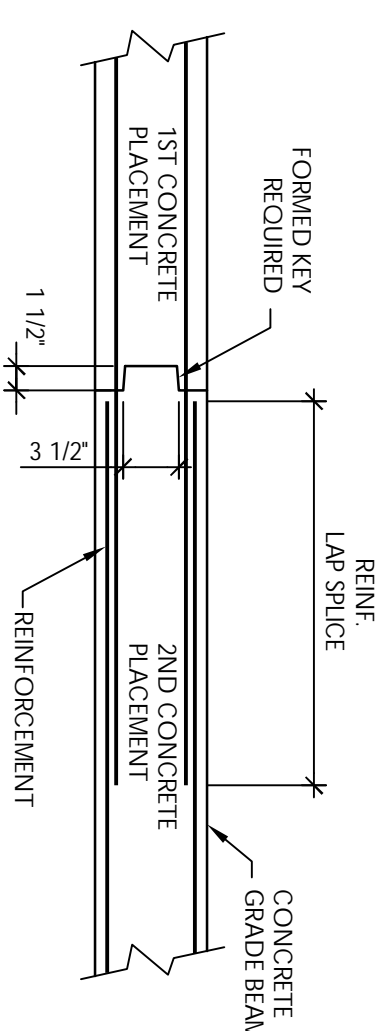
| BAR SIZE | 3000 PSI CONCRETE | 4000 PSI CONCRETE |
|----------|-------------------|-------------------|
| #3 | 1'-4" | 1'-4" |
| #4 | 1'-10" | 1'-7" |
| #5 | 2'-3" | 2'-0" |
| #6 | 2'-8" | 2'-4" |
| #7 | 3'-2" | 2'-9" |
| #8 | 3'-7" | 3'-1" |
| #9 | 4'-0" | 3'-6" |
| #10 | 4'-10" | 4'-2" |
| #11 | 6'-0" | 5'-2" |

EI TYPICAL LAP SPICE SCHEDULE
S30 1" = 1'-0"

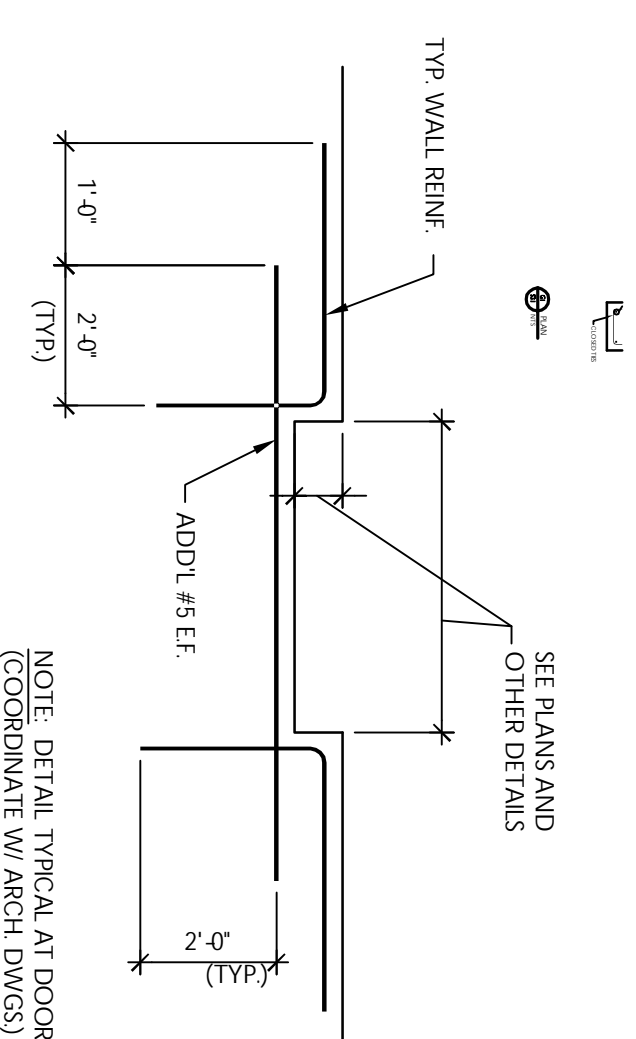


- NOTES:
- Bondout may be deleted at columns located at building exterior walls provided concrete slab completely encases all sides of column and column base plate.

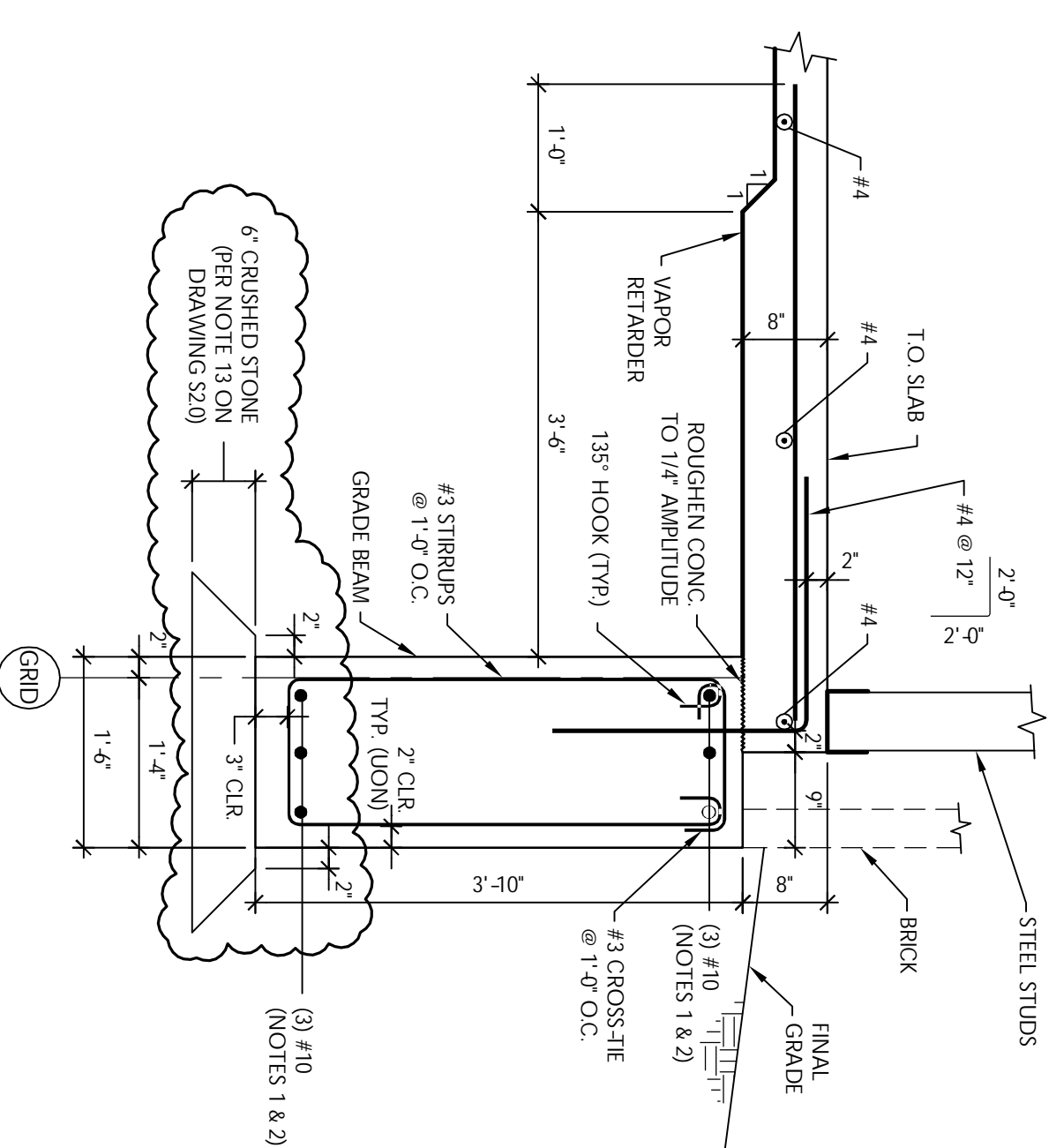
GI TYPICAL GROUND FLOOR SLAB BONDOUT @ COLUMNS
S30 1" = 1'-0"



HI TYPICAL CONSTRUCTION JOINT IN GRADE BEAM
S30 1" = 1'-0"

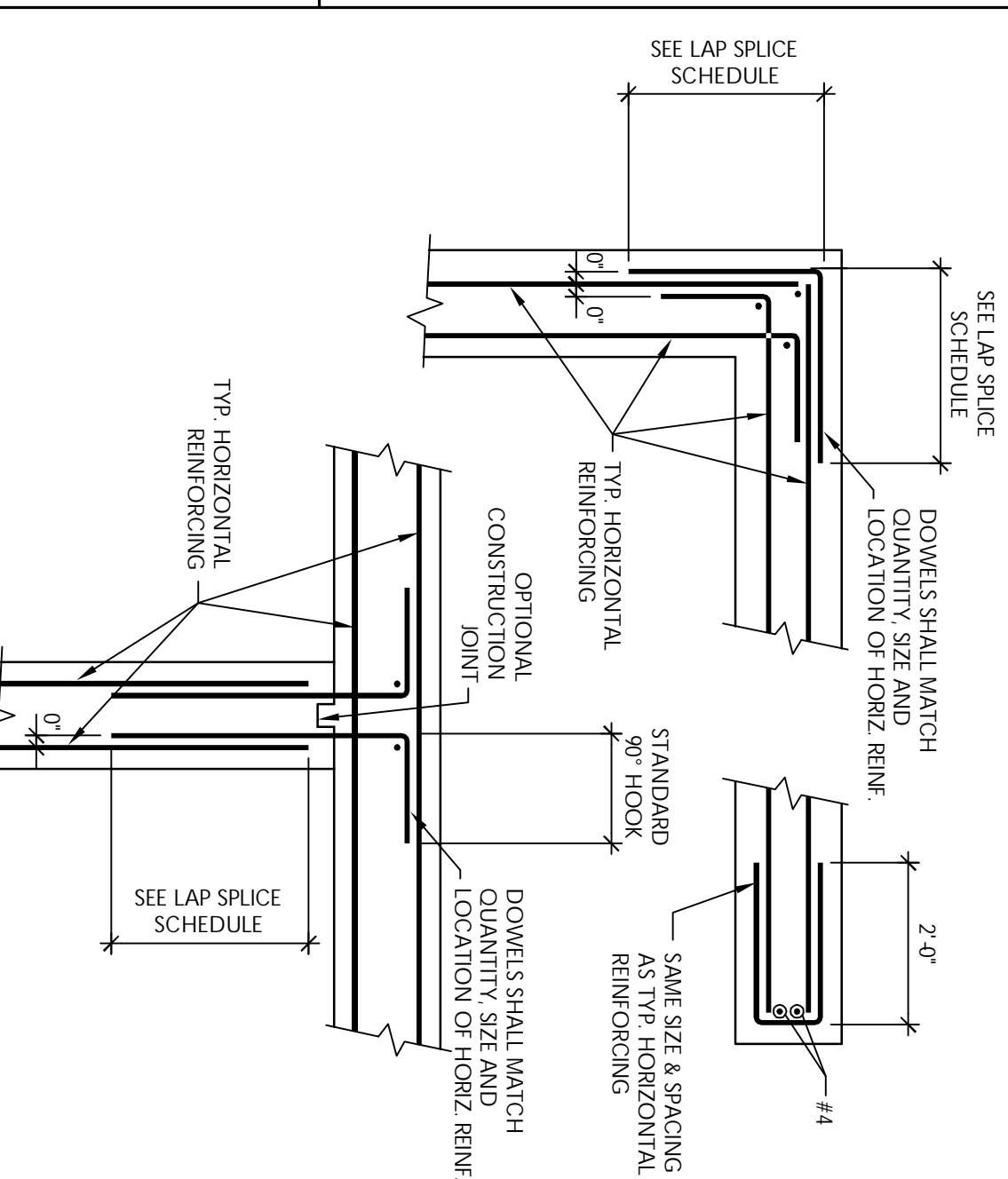


B5 TYPICAL STEP IN TOP OF FOUNDATION WALL
S30 1" = 1'-0"

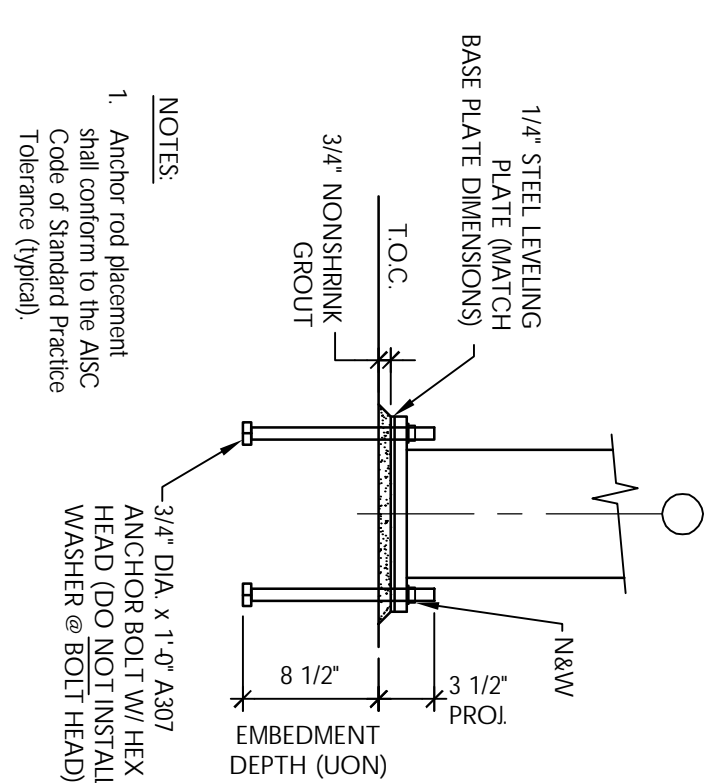


- NOTES:
- Horizontal reinforcement shall have matching dowels at beam intersections and corners as specified in Detail HS/S30.
 - Horizontal reinforcement shall extend through concrete piers.

B6 SECTION
S30 1" = 1'-0"

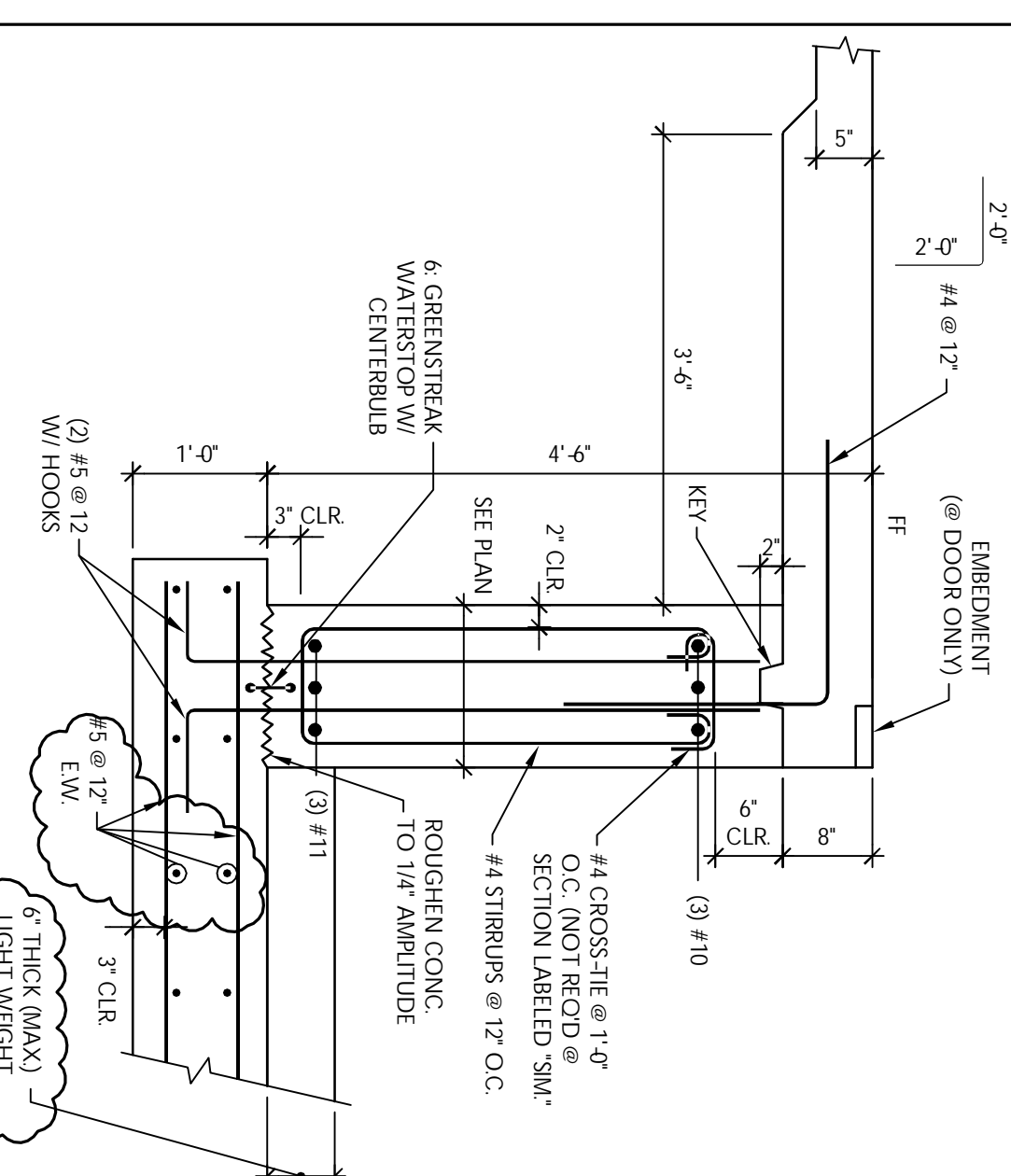


H5 TYPICAL DETAILS AT WALL CORNERS AND INTERSECTIONS
S30 1" = 1'-0"



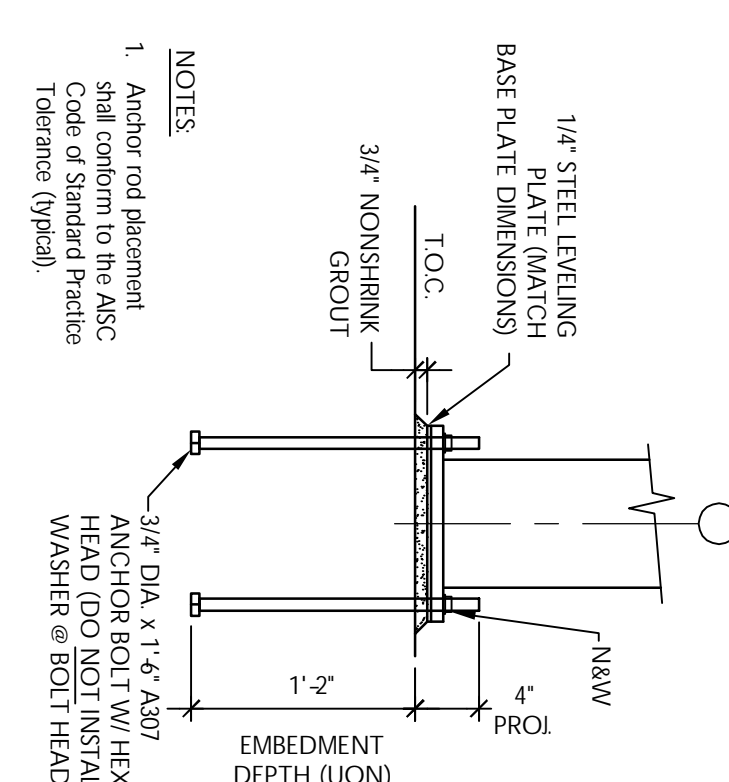
- NOTES:
- Anchor rod placement shall conform to the ASC Code of Standard Practice (Tolerance: Typical).

B7 TYPE 1 ANCHOR BOLT
S30 1" = 1'-0"



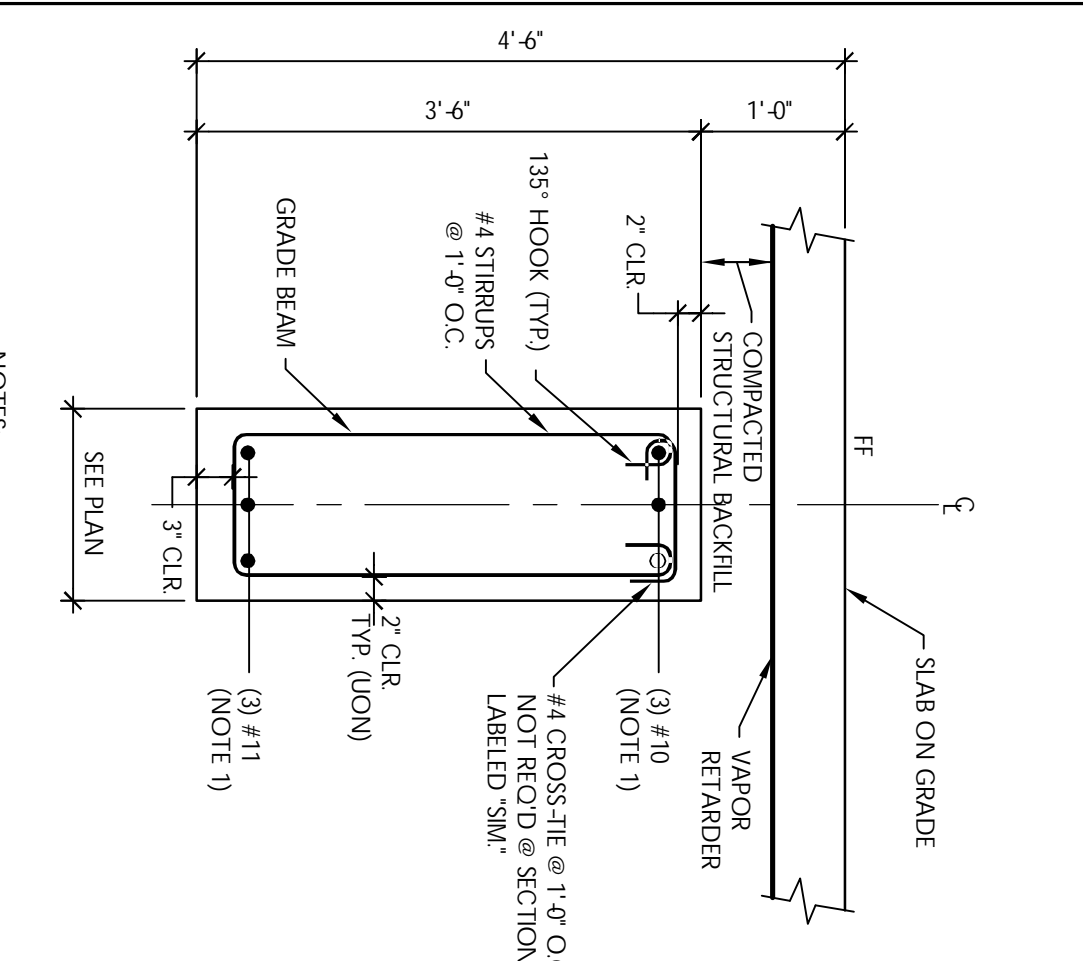
- NOTES:
- Corrosive Elevator Rods and embedments with elevator manufacturer.
 - See Arch. Dwg's for ladder and other requirements.

B8 ELEVATOR PIT SECTION
S30 1" = 1'-0"



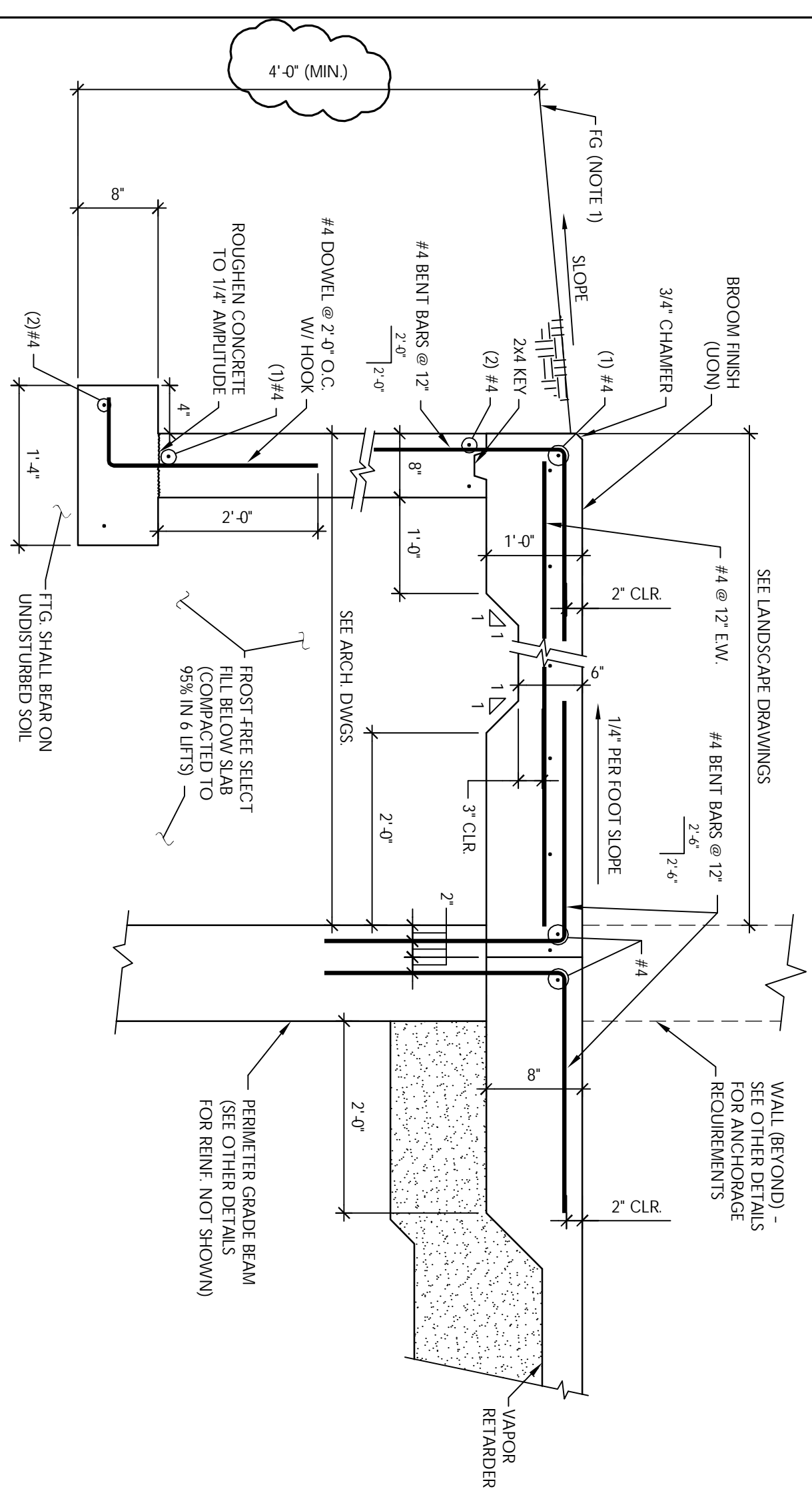
- NOTES:
- Anchor rod placement shall conform to the ASC Code of Standard Practice (Tolerance: Typical).

B9 TYPE 2 ANCHOR BOLT
S30 1" = 1'-0"



- NOTES:
- Horizontal reinforcement shall have matching dowels at beam intersections and corners as specified in Detail HS/S30.
 - Horizontal reinforcement shall extend through concrete piers.

B9 SECTION
S30 1" = 1'-0"



- NOTES:
- The ground immediately adjacent to the foundation shall be sloped away from the building at a slope of 1/2" vertical to 12" horizontal for a minimum distance of 8'-0". This condition shall exist a full settlement of backfill has occurred (condition does not occur at section labeled 'SM').

H7 SECTION
S30 1" = 1'-0"

REVISIONS:

| Description: | Date: |
|-------------------------|-----------------------|
| Issued for Permit Only | 11/11/05 |
| Issued for Pricing | 11/16/05 |
| Issued for Construction | 2/6/06 |
| CAD Filename: | CWS/Marginal Way/Conc |

FOUNDATION SECTIONS & DETAILS

Scale: As Noted
Date: 10/25/05
PSE Proj. No.: 127-05

Owner:
BAYSIDE HOLDINGS, LLC
50 PORTLAND PIER SUITE 400
PORTLAND, MAINE 04101

MULTI-TENANT OFFICE BUILDING
MARGINAL WAY
PORTLAND, MAINE 04101



CWS Architects
434 Cumberland Avenue
Portland, ME 04101
Phone: (207) 774-4441
Fax: (207) 774-4016
www.CWSarch.com

Drawing Number:
S3.0