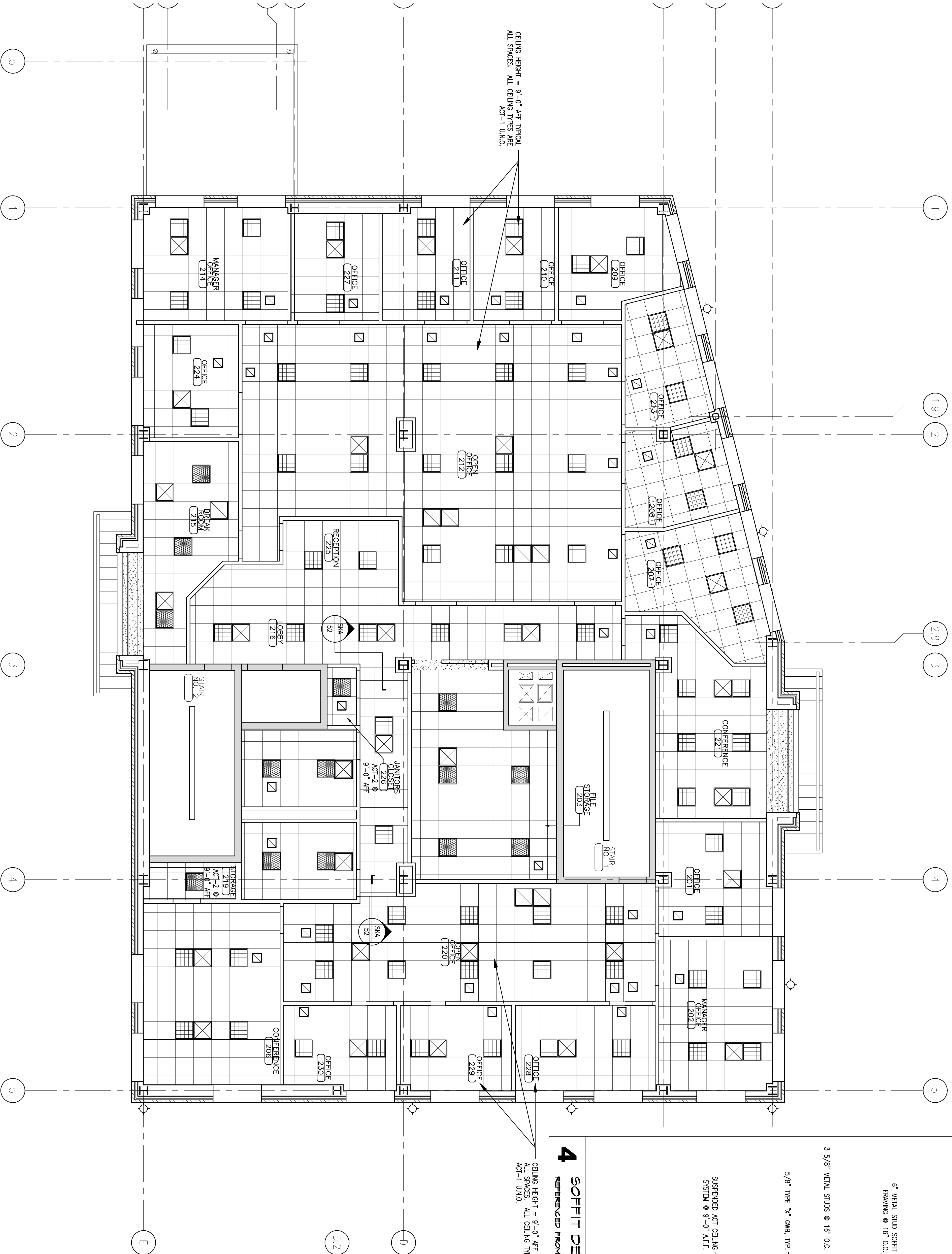


**B** SECOND FLOOR REFLECTED CEILING FIT-UP PLAN

SCALE: 3/16" = 1'-0"

REFERENCED FROM:

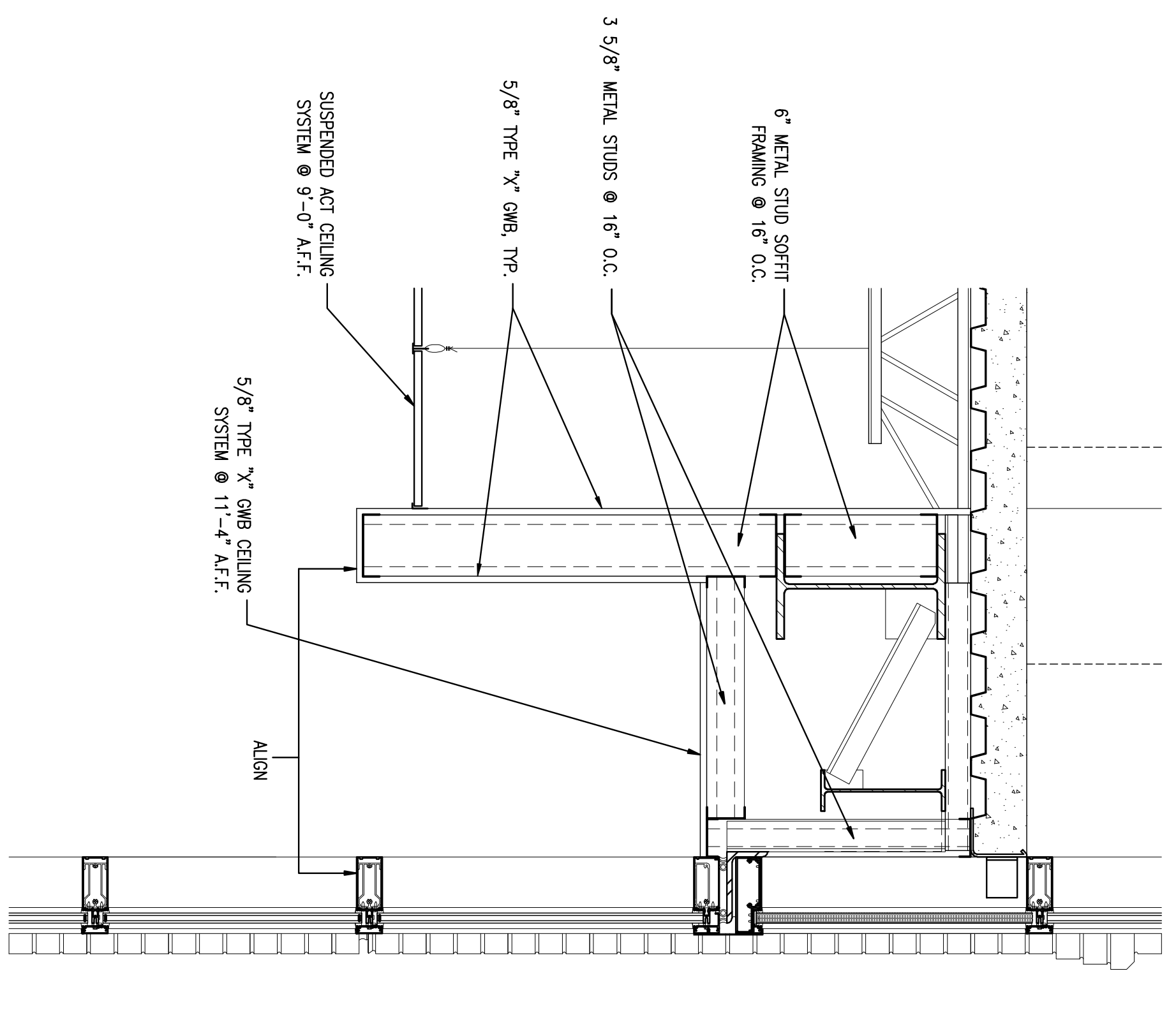


CEILING HEIGHT = 9'-0" AFF. TYPICAL  
ALL SPACES. ALL CEILING TYPES ARE  
ACT-1 UN.NO.

CEILING HEIGHT = 8'-0" AFF. TYPICAL  
ALL SPACES. ALL CEILING TYPES ARE  
ACT-1 UN.NO.

**4** SOFFIT DETAIL @ CURTAIN WALL

SCALE: 1" = 1'-0"



Drawing Title:  
**SECOND FLOOR REFLECTED CEILING FIT-UP PLAN**

Scale: 3/16" = 1'-0"  
Date: Progress 9/26/05  
CWS Proj. No.: 044301mo

REVISIONS:	
Description:	Date:
GORHAM SAVING BANK REVISIONS	10/31/06
GORHAM SAVING BANK REVISIONS	11/14/06

Owner:  
**BAYSIDE VENTURES, LLC**  
50 PORTLAND PIER  
SUITE 400  
PORTLAND, MAINE 04101

**63 MARGINAL WAY**  
**MULTI-TENANT OFFICE BUILDING**  
63 MARGINAL WAY  
PORTLAND, MAINE 04101

**CWS Architects**

434 Cumberland Avenue  
Portland, ME 04101  
Phone: (207) 774-4441  
Fax: (207) 774-4016  
www.CWSarch.com

**A2.2F**

