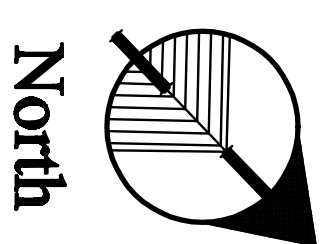
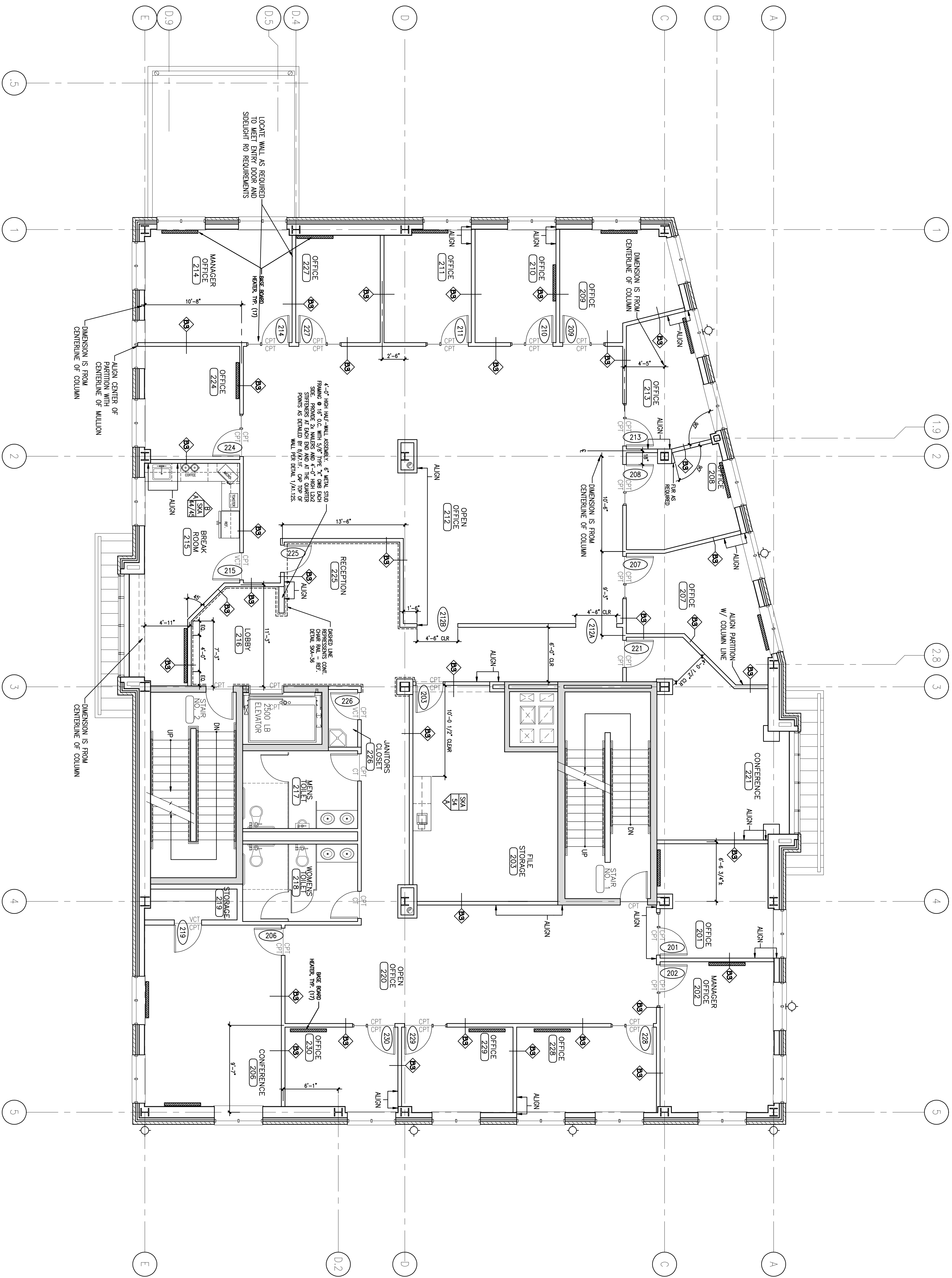


B SECOND FLOOR FIT-UP PLAN
 REFERENCED FROM:

SCALE: 3/16" = 1'-0"



Drawing Title:
**SECOND FLOOR
 FIT-UP PLAN**
 Scale: 3/16" = 1'-0"
 Date: Progress 9/26/05
 CWS Proj. No.: 04430.mmo

REVISIONS:		
Description:	Date:	
GORHAM SAVING BANK REVISIONS	10/19/06	1
GORHAM SAVING BANK REVISIONS	10/31/06	2
GORHAM SAVING BANK REVISIONS	11/13/06	3

Owner:
**BAYSIDE
 VENTURES, LLC**
 50 PORTLAND PIER
 SUITE 400
 PORTLAND, MAINE
 04101

**63 MARGINAL WAY
 MULTI-TENANT
 OFFICE BUILDING**
 63 MARGINAL WAY
 PORTLAND, MAINE
 04101

434 Cumberland Avenue
 Portland, ME 04101
 Phone: (207) 774-4441
 Fax: (207) 774-4016
 www.CWSarch.com

CWS
 Architects

Drawing Number:
A1.2F