

ZADE

ZADE ASSOCIATES, LLC
Consulting Engineers
140 Beach St., Boston, MA 02111
Phone: (617) 338-4406
Fax: (617) 451-2540
Email: ZadeCo@AOL.com

Mohammed Zade Ph.D., P.E.
Muzaffer Muctehitzade M.Sc., P.E.

Shinberg Consulting, LLC
477 Congress Street, Suite 1012
Portland, Maine 04101

February 9, 2012

Attn: Mr. Greg Shinberg
Re: 202 Kennebec Street,
Wash Bay Unit Heater

Dear Greg,

The enclosed sketch, SKM-1, describes the installation of a Plexi-Glas surround shield for a gas fired unit heater at the 202 Kennebec Street, hand wash bay in Portland, ME. The installation of this shield will protect the unit heater from water damage caused by accidental water over spray or water splash back during general operating conditions.

Unit manufacturer installation requirements do not limit this unit to be installed in "Wet locations" indicate that only the gas ignition device to be protected from water spray.

In our opinion the shield provided will provide this protection.

Electrical connection for the unit is already "water proof" type and complies with NEC 2011 wet location requirements.

Also enclosed is SKM-2, which describes the installation of a fiberglass reinforced plastic (FRP) surround shield for the garage door power unit at this washing facility. This shield installation will protect the power unit from water damage caused by accidental water over spray or water splash back during general operating conditions.

If you should have any questions, or require further information, please contact our office.

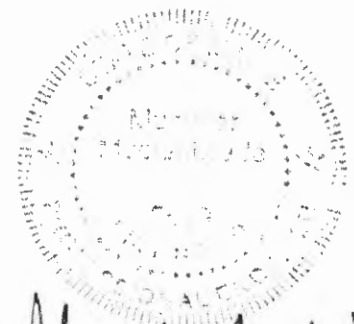
Sincerely,

ZADE ASSOCIATES, LLC.

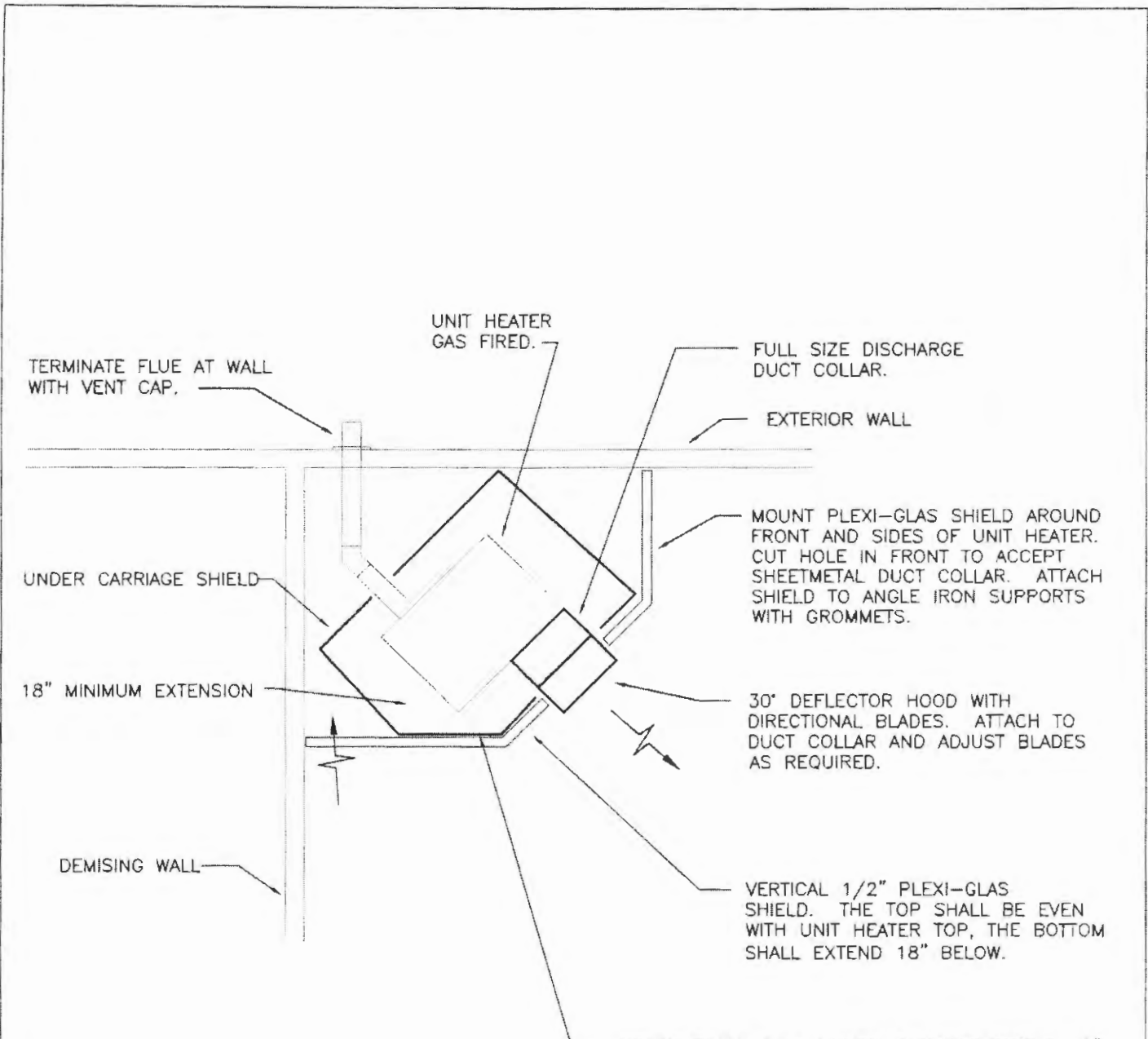
Mohammed Zade, Ph.D., P.E.
Muzaffer Muctehitzade, PE
Principal



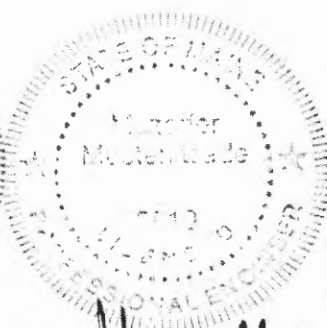
Mohammed Zade



Muzaffer Muctehitzade



MOUNT PLEXI-GLAS UNDER CARRIAGE SHIELD 18" BELOW UNIT HEATER. SHIELD SHALL EXTEND 18" BEYOND BACK AND SIDES OF UNIT HEATER AND EXTEND TO THE FRONT VERTICAL SHIELD. ATTACH SHIELD TO GALVANIZED ANGLE IRON OR UNISTRUT SUPPORTS WITH GROMMETS. UNDER CARRIAGE SHIELD SHALL BE REMOVABLE TO PERMIT UNIT HEATER SERVICE.



Mohammed Zade

Muzaffer Muekkilzade

Project:
CAR WASH
202 KENNEBEC ST.
PORTLAND, ME

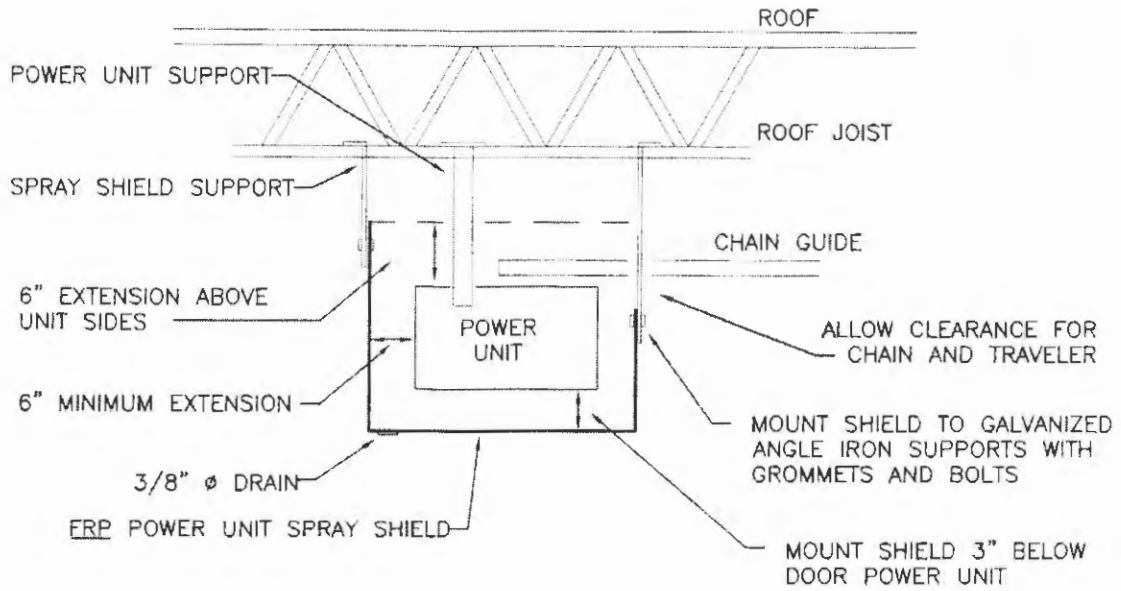
Title:
UNIT HEATER
SPRAY SHIELD
DETAIL

ZADE ASSOCIATES LLC
CONSULTING ENGINEERS
140 BEACH STREET, BOSTON, MA 02111
TEL. (617) 338-4400
FAX. (617) 451-2540
E-MAIL zadeco@aol.com

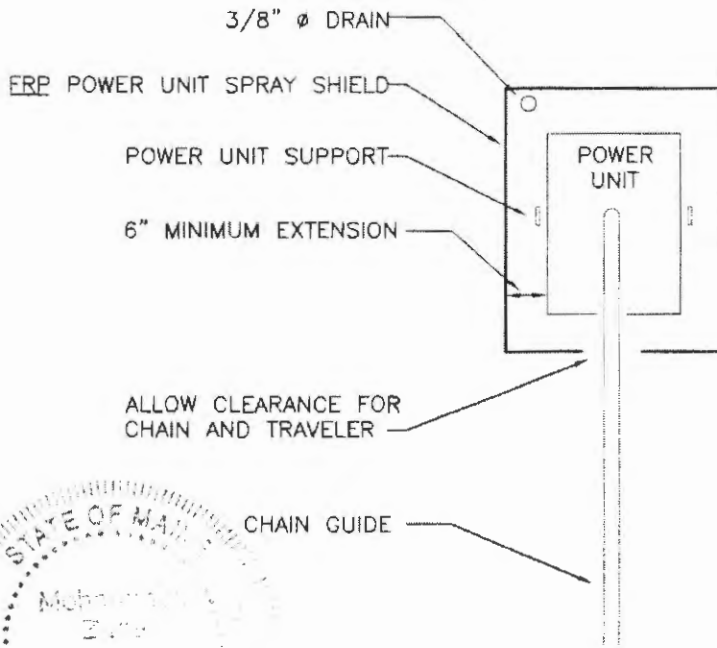
SKETCH #:
SKM-1

Date: Feb. 9, 2012

Scale: NTS



SIDE ELEVATION VIEW



PLAN VIEW



Mohammed Zade

Mustafa M. Nadeem

Project:

CAR WASH
202 KENNEBEC ST.
PORTLAND, ME

Title:

GARAGE DOOR OPENER
SPRAY SHIELD
DETAIL

ZADE ASSOCIATES LLC

CONSULTING ENGINEERS
140 BEACH STREET, BOSTON, MA 02111
TEL. (617) 338-4406
FAX. (617) 451-2540
E-MAIL zadeco@aol.com

SKETCH #:

SKM-2

Date: Feb. 9, 2012

Scale: NTS