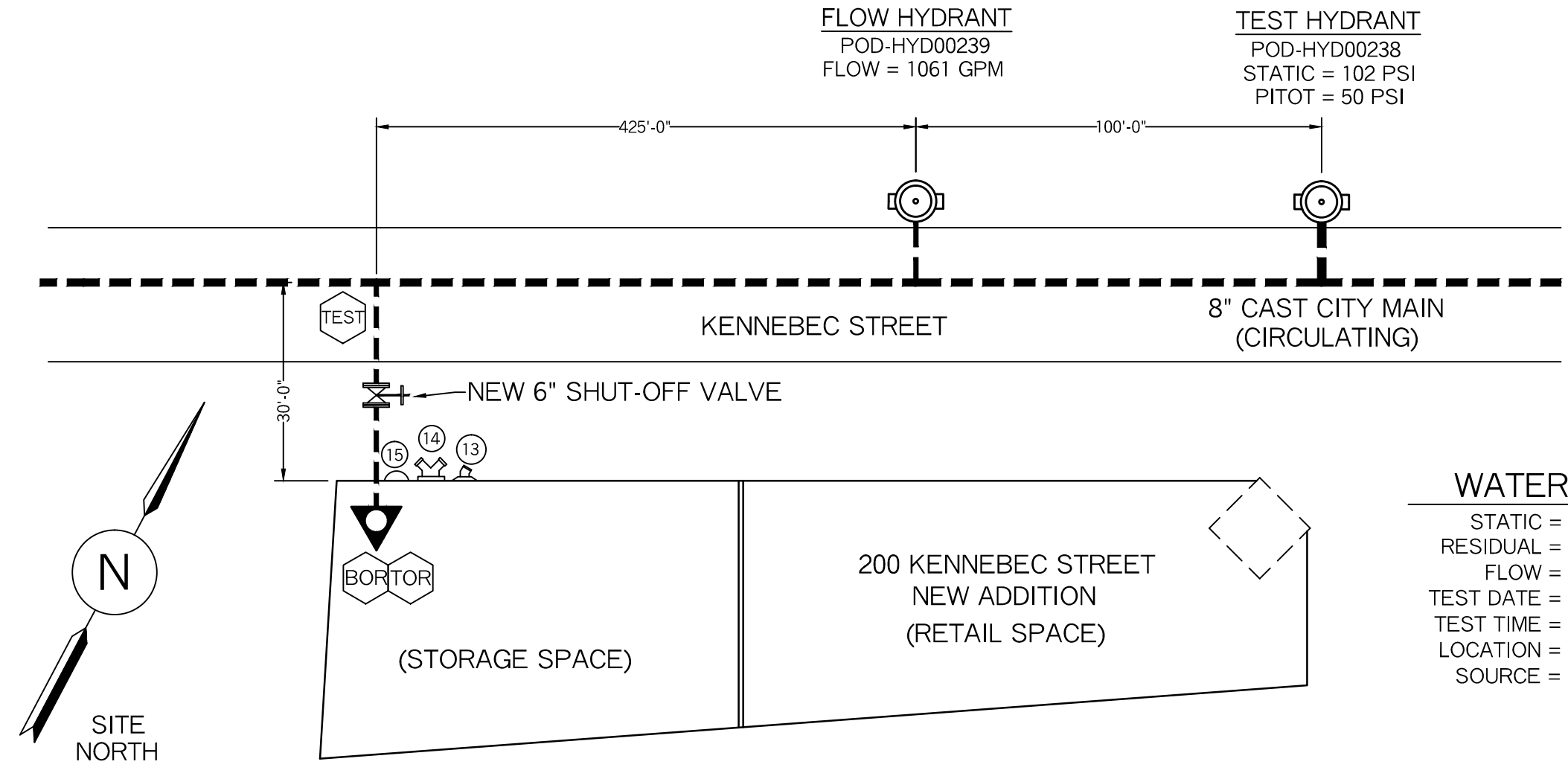


FLOW HYDRANT
 POD-HYD00239
 FLOW = 1061 GPM

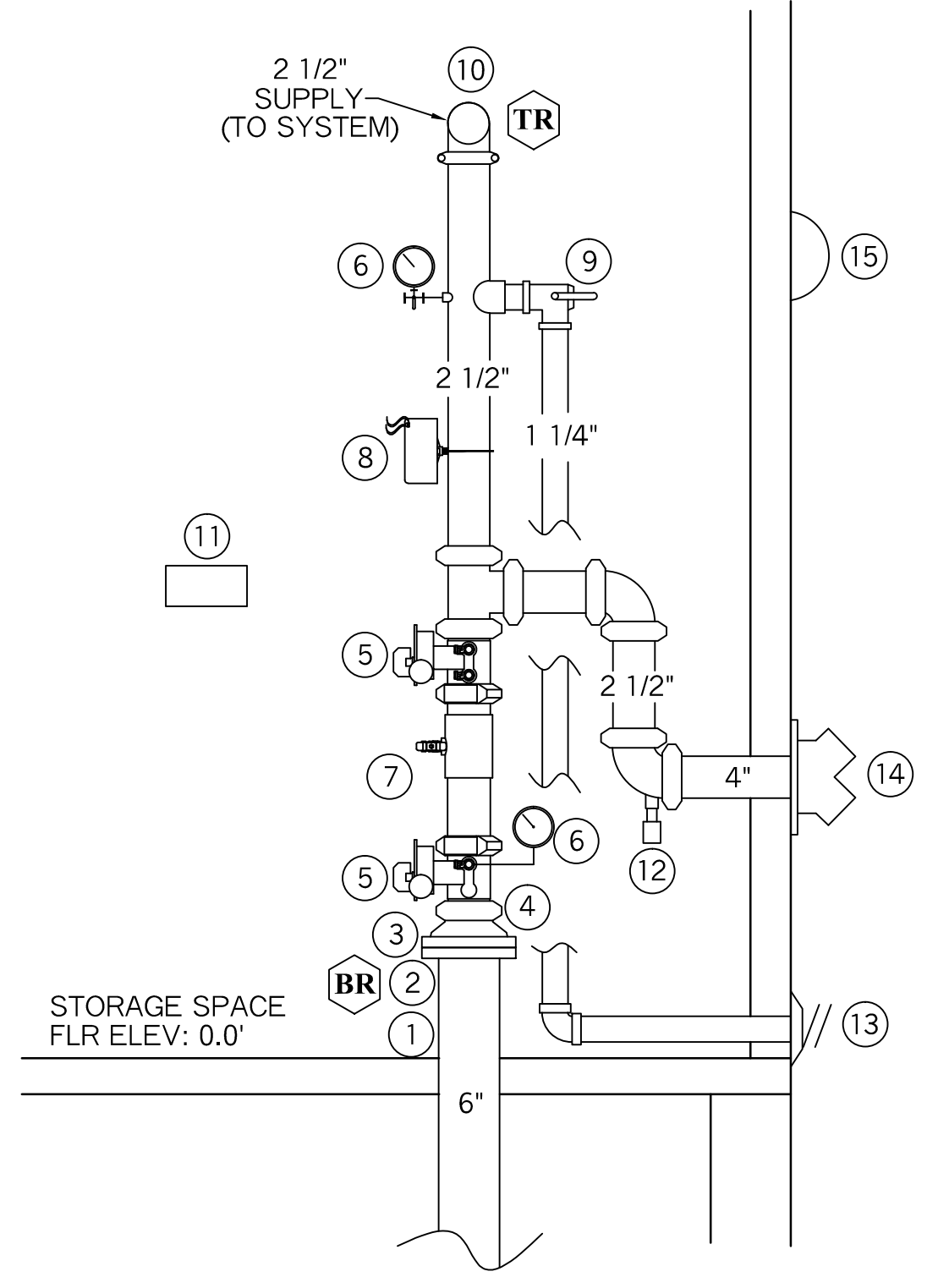
TEST HYDRANT
 POD-HYD00238
 STATIC = 102 PSI
 PITOT = 50 PSI



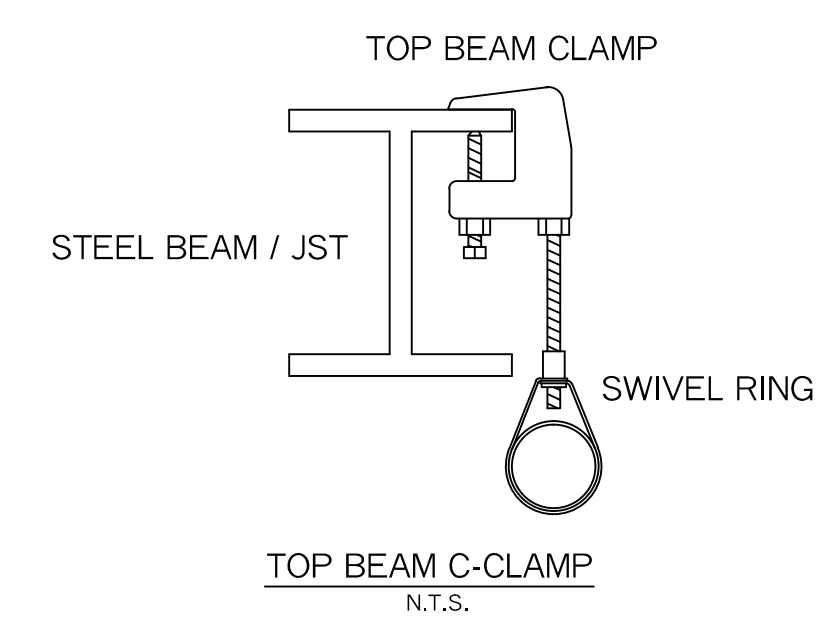
WATER DATA
 STATIC = 102 PSI
 RESIDUAL = 50 PSI
 FLOW = 1016 GPM
 TEST DATE = 11-2-2016
 TEST TIME = N/A
 LOCATION = KENNEBEC STREET
 SOURCE = PORTLAND WATER DEPT
 TWO HYDRANT TEST

PLOT / SITE PLAN
 SCALE: NTS

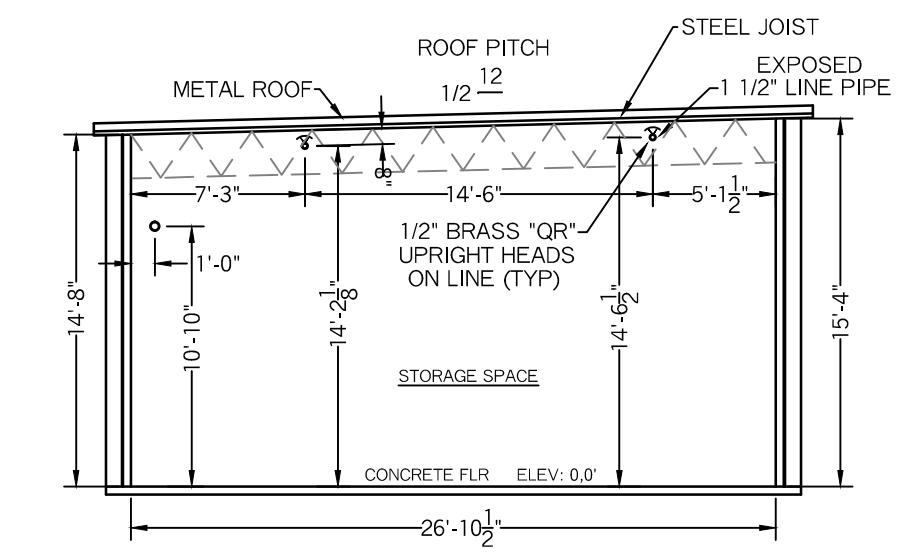
- VALVE RISER LEGEND**
- ① 6" DICL U.G. SPIGOT, PLUMB AND LEVEL (BY OTHER'S)
 - ② 6" UNI-FLANGE (BY OTHER'S)
 - ③ 6" GROOVED FLANGE
 - ④ 6" X 2 1/2" GROOVED CONCENTRIC REDUCER
 - ⑤ 2 1/2" BUTTERFLY VLV W/ TAMPER SWITCH (N.O.)
 - ⑥ WATER PRESSURE GAUGE (3.5" DIA.)
 - ⑦ 2 1/2" AMES COLT "C200" DC BFP
 - ⑧ POTTER VSR-2.5" VANE TYPE FLOWSWITCH
 - ⑨ 1 1/4" TEST-N-DRAIN VALVE (1/2" TEST ORIFICE) (N.C.)
 - ⑩ 2 1/2" GROOVED ELBOW
 - ⑪ SPARE HEAD BOX, 6 HD CAPACITY W/ WRENCH
 - ⑫ 1/2" AUTOMATIC BALL DRIP
 - ⑬ 1 1/4" GALV. 45 ELBOW W/ GALV. GRINNELL PLATE (MAIN DRAIN)
 - ⑭ 2 1/2" x 2 1/2" x 4" SIAMESE FDC W/ WALL PLATE, CAP & CHAIN SEE MAIN FLR PLAN FOR LOCATION
 - ⑮ ELECTRIC BELL, 6" DIA., WITH BACKBOX, DEDICATED CIRCUIT POWER (MOUNTED TO OUTSIDE BY OTHERS)



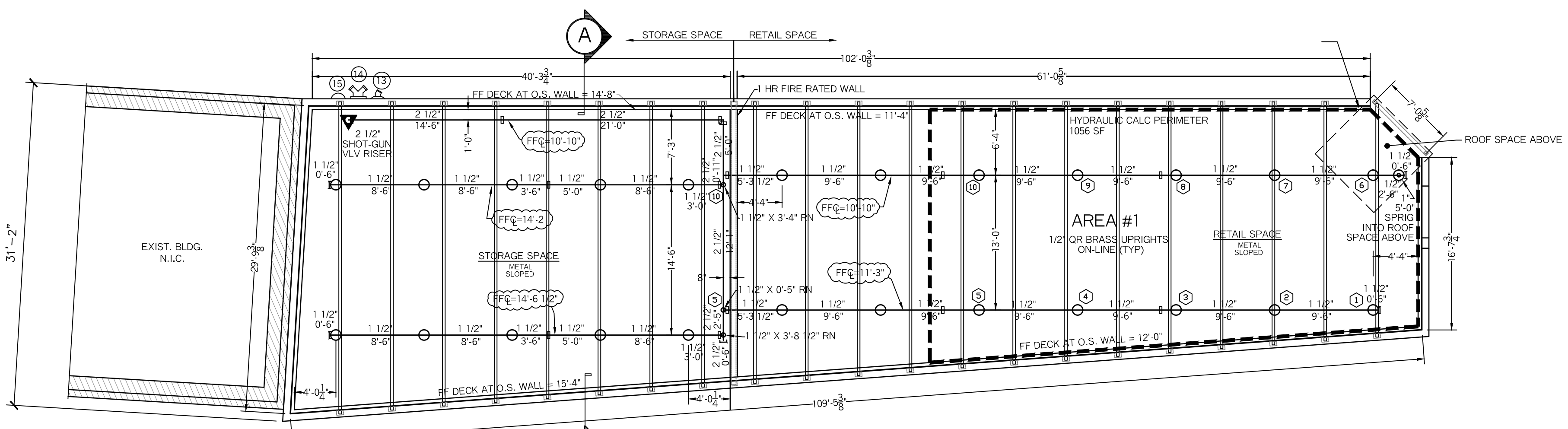
VALVE RISER DETAIL
 N.T.S.



HANGER DETAILS
 N.T.S.



BUILDING SECTION "A"
 SCALE: 1/4" = 1'-0"



MAIN FLOOR PLAN
 SCALE: 1/8" = 1'-0"
 FLOOR AREA = 2,666.0 SF
 FF ELEV: 0.0'

SPRINKLER HEAD INFORMATION, THIS FLOOR ONLY

QTY	SIZE	ORIFICE	K-FACTOR	DESCRIPTION	MODEL	TEMP	ESCUTCHEON	SYMBOL
24	1/2"	1/2"	5.6	VIKING VK300 BRASS QR UPRIGHT (ON LINE)	VK300	155	NONE	○
1	1/2"	1/2"	5.6	VIKING VK300 BRASS QR UPRIGHT (ON SPRIG)	VK300	200	NONE	⊙

TOTAL HEADS = 25

HYDRAULIC CALCULATION INFORMATION

LOCATION: BASEMENT RENOVATED AREA
BASIS OF DESIGN: NFPA 13, 2007 EDITION
DENSITY AREA OF COVERAGE
.2 1056 SQFT
OCCUPANCY: RETAIL SPACE
SPRINKLERS: TOTAL THREAD TEMP
10 1/2" 155
SYSTEM DEMAND AT BASE OF RISER:
PRESSURE FLOW HOSE
67.33 271.31 250
SAFETY MARGIN: 19.29 PSI

SYSTEM GENERAL NOTES:

- A WET PIPE SYSTEM OF AUTOMATIC SPRINKLERS DESIGNED, INSTALLED AND TESTED PER NFPA 13 (2016 EDITION)
- SYSTEM DESIGNED TO MEET ORDINARY GROUP II HAZARD OCCUPANCY (.2 DENSITY) (RETAIL, GENERAL STORAGE UP TO 12'-0" AFF)
- DESIGN AREA REDUCED IN ACCORDANCE WITH NFPA 13 (2016) CHAPTER 11 SECTION 11.2.3.2.3 *QUICK RESPONSE SPRINKLERS*
- 1/2" BRASS UPRIGHT HEADS WILL BE INSTALLED EXPOSED ON LINE
- NEW 6" DICL FIRE SPRINKLER WATER LINE TO BE INSTALLED, TESTED AND FLUSHED BY OTHER'S IN ACCORDANCE WITH NFPA 24 AND LOCAL CODES. 6" DICL SPIGOT IN THE BUILDING SHALL BE PLUMB AND LEVEL.
- RESIDENTIAL FIRE PROTECTION TO START AT 6" UNI-FLANGE AT THE END OF THE 6" SPIGOT IN THE SPRINKLER ROOM ON THE FIRST LEVEL.
- 2 1/2" SHOT-GUN VALVE RISER WITH A DOUBLE CHECK BACKFLOW PREVENTER.
- LINE PIPING (1" & 1 1/4") TO BE SCHEDULE 40 BLACK STEEL WITH THREADED ENDS AND THREADED C.I. FITTINGS.
- LINE PIPING (1 1/2") TO BE SCHEDULE 10 BLACK STEEL WITH GROOVED ENDS AND DUCTILE IRON GROOVED FITTINGS.
- MAIN PIPING (2 1/2") TO BE SCHEDULE 10 BLACK STEEL WITH GROOVED ENDS AND DUCTILE IRON GROOVED FITTINGS.

SYSTEM SYMBOL LEGEND:

- ▶ = WET SHOT-GUN RISER
- ① = HYDRAULIC CALC REF PT
- ⊘ = DRAIN VALVE
- = GROOVED COUPLING
- [] = GROOVED CAP
- N.I.C. = NOT IN CONTRACT
- LPD = LOW POINT DRAIN
- N.O. = NORMALLY OPEN
- N.C. = NORMALLY CLOSED

PROJECT NAME: 200 KENNEBEC STREET NEW 2017 ADDITION 200 KENNEBEC STREET PORTLAND, ME. 04101	FIRE SPRINKLER PLANS AND DETAILS REQUIRED APPROVALS: STATE FIRE MARSHALS OFFICE LOCAL FIRE DEPARTMENT OWNER	RESIDENTIAL FIRE PROTECTION, LLC DATE: 3-29-2017
CONTRACT WITH: NORTHEAST DEVELOPMENT 17 SOUTH ST., 3RD FLOOR PORTLAND, ME. 04101 PH: (207) 780-0223	DRAWN BY: TPP NICET III CERTIFICATION # 100854	SCALE: 1/8" = 1'-0"
RESIDENTIAL FIRE PROTECTION 64 DAGGETT HILL ROAD, GREENE, MAINE 04236 PH: (207) 946-3473 FAX: (207) 946-3474	CHECKED BY: SJC NICET III CERTIFICATION # 78065	CONTRACT NO. C17005
	CONTRACTOR LICENSE #511 CONTRACTOR RMS #80	DRAWING NO. 1 OF 1