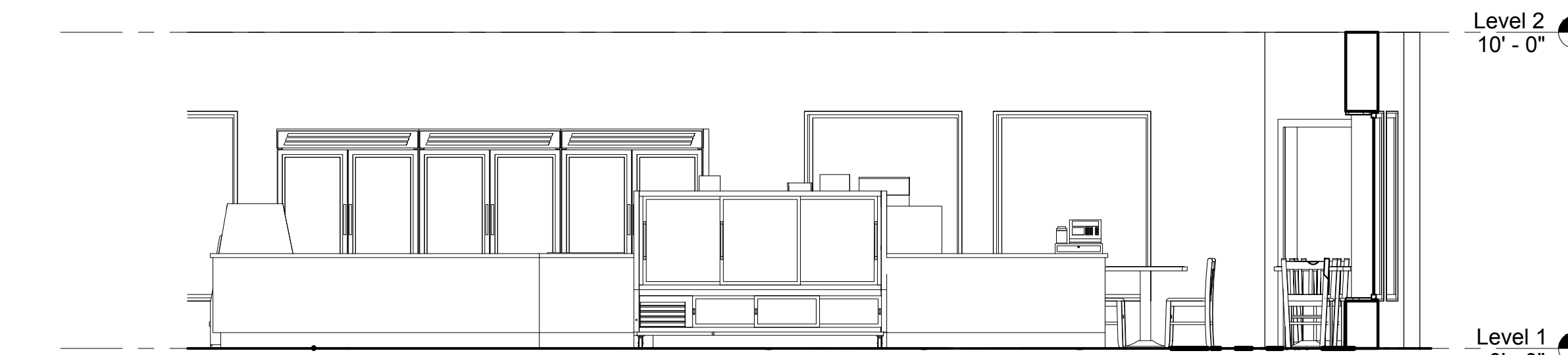


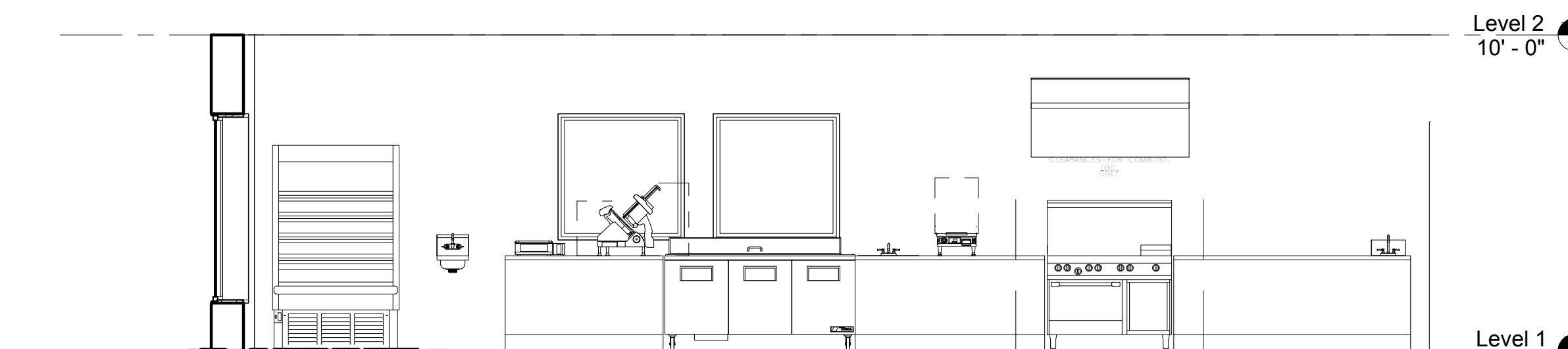
1 Level 1
1/4" = 1'-0"

4 {3D}

Specialty Equipment Schedule				
Type Mark	Count	Manufacturer	Model	Description
1	1	NIC - By Millwork	Custom	7'0" Register Counter
2	1	NIC		POS Register System
3	1	TRUE FOOD SERVICE EQUIPMENT, INC.	TDBD-96-3	Display Case Double Duty Refrigerated Deli Case
4	1	NIC - By Millwork	Custom	3'0" Soup Counter
5	1	Hatco Corporation	HWBI-2D	Two (2) Drop-In Heated Wells, Individual Drains
6	1	NIC - By Millwork	Custom	7'6" Service Counter Counter
7	1	TRUE FOOD SERVICE EQUIPMENT, INC.	TDBD-48-2	Display Case Double Duty Refrigerated Deli Case
8	1	Advance Tabco	FC-3-1824-24R	Sink, NSF, 3 comp, 16 gauge
8.1	1	T&S Brass and Bronze Works, Inc.	B-0133-B	Pre-Rinse Unit: EasyInstall 8" Wall Mount Mixing Faucet, Eterna Cartridges w/ Spring Checks, Lever Handles, 44" Flexible Stainless Steel Hose, 1.42 GPM Spray Valve, 6"Wall Bracket & 1/2" NPT Female Inlets
9	1	NIC - By Millwork	Custom	7'6" Custom Rear Work Cabinet
10	1	Garland	G48-6G12RS	Range, Restaurant, Gas
11	1	Captive Aire	Custom	5'0" Exhaust Hood System
12	1	NIC - By Millwork	Custom	6'0" Custom Rear Work Counter
13	1	Atosa Catering Equipment	MSF8304	3 Door Sandwich/Salad Unit
14	1	NIC - By Millwork	Custom	5'0" Rear Service Counter
15	1	Hobart	HS6-1	Slicer
16	1	Detecto	D30	Scale
17	1	Advance Tabco	7-PS-56	Hand Sink
18	1	Federal Industries	ERSSHP-478SC	Display Case, Self-Serve, Refrigerated
19	1	Advance Tabco	DI-1-10SP	Drop-In Sink
20	1	Advance Tabco	DI-1-2012	Drop-In Sink
21	1	STAR MANUFACTURING	GX14IG	Panini/Sandwich Grill
22A	1	American Panel	Custom	Walk-in Cooler
23A	2	Atosa Catering Equipment	MCF8707	Glass Door Merchandiser Swing Door Refrigerator
24C	1	Atosa Catering Equipment	MCF8701	Glass Door Merchandiser Swing Door Freezer
25	1			Spare Number
26	1	Atosa Catering Equipment	MCF8707	Glass Door Merchandiser Swing Door Refrigerator
27	1	Advance Tabco	9-OP-20	Mop Sink



2 Section 2
1/4" = 1'-0"



3 Section 3
1/4" = 1'-0"

630 John Hancock Road
Taunton, MA 02780
1-800-733-5708

WWW.PERKINS1.COM

THIS DOCUMENT INCLUDING THE IDEAS AND DESIGNS INCORPORATED HEREIN ARE THE PROPERTY OF THE PERKINS PAPER, INC. AND SHALL NOT BE USED IN WHOLE OR IN PART WITHOUT WRITTEN NOTICE FROM PERKINS PAPER, INC.

Perkins - Equipment and Design
Scott DePiero
7 Perimeter Road
Manchester, NH 03103
p: 603-669-3400
f: 603-641-6140
scott.depiero@perkins1.com

No.	Description	Date

Leavitt & Sons
Portland, ME
Preliminary

Specialty Equipment Layout

Project number: Leavitt-20170220
Date: 2017-02-20
Drawn by: Scott DePiero
Checked by: SZ

FS-1.00

Scale: 1/4" = 1'-0"