

Prepared For:
**NORTHLAND
 MANAGEMENT
 CORP.**
 17 South Street, 3rd Floor
 Portland, ME 04101

Consultant:

Architect:
ARCHETYPE
 architects
 48 Union Wharf Portland, Maine 04101
 (207) 772-6022 ARCHETYPE@ARCHETYPEPA.COM

Project:
200 KENNEBEC

Revisions:
 1 | 10/12/16 | SHELL REDESIGN

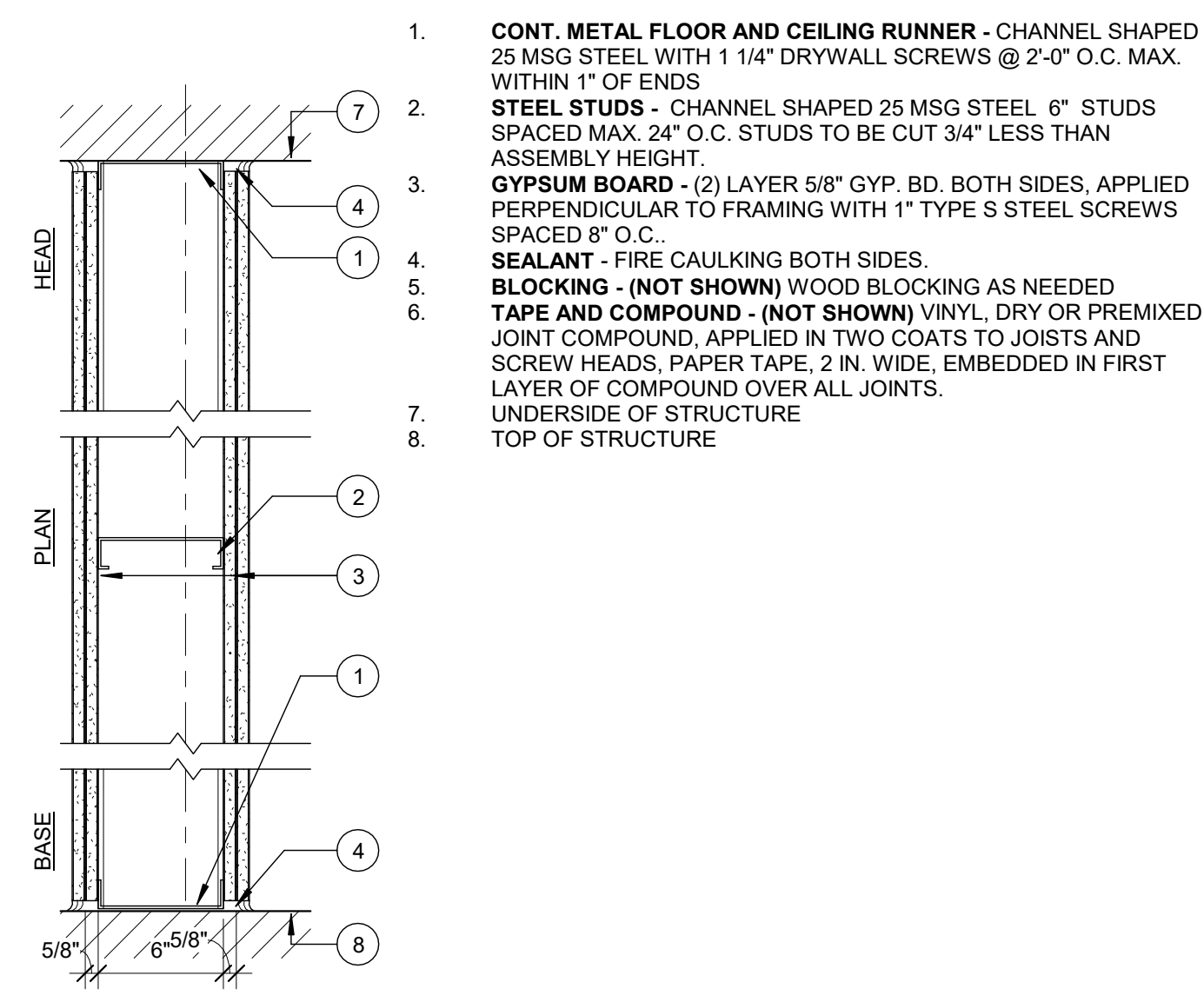
Date:
 12/29/2015

Scale:
 1 1/2" = 1'-0"

WALL TYPES

A4.00

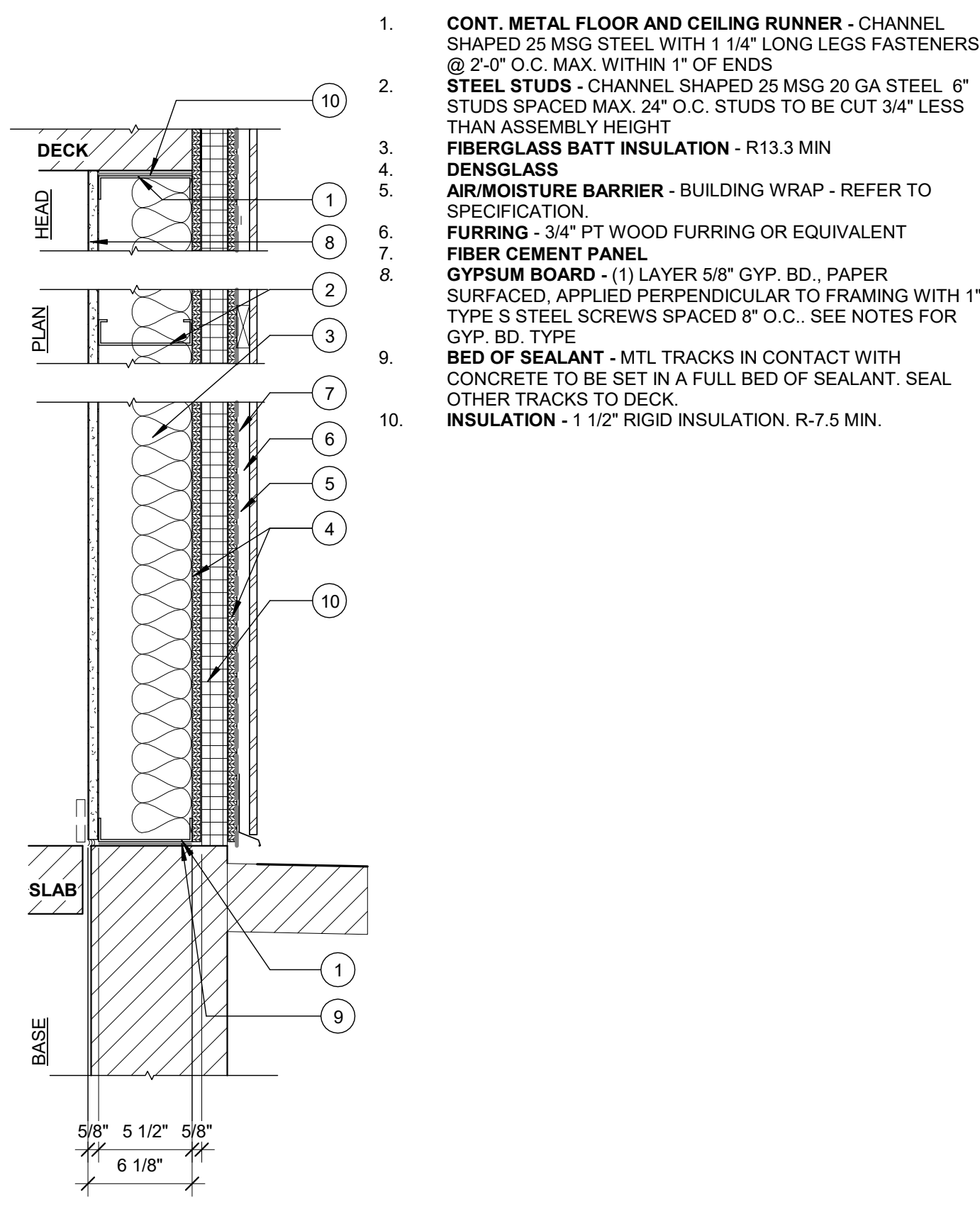
W02 1 HOUR RATED NON-BEARING PARTITION
 DESIGN NUMBER - UL U407



1. **CONT. METAL FLOOR AND CEILING RUNNER** - CHANNEL SHAPED 25 MSG STEEL WITH 1 1/4" DRYWALL SCREWS @ 2'-0" O.C. MAX. WITHIN 1" OF ENDS
2. **STEEL STUDS** - CHANNEL SHAPED 25 MSG STEEL 6" STUDS SPACED MAX. 24" O.C. STUDS TO BE CUT 3/4" LESS THAN ASSEMBLY HEIGHT.
3. **GYP. BOARD** - (2) LAYER 5/8" GYP. BD. BOTH SIDES, APPLIED PERPENDICULAR TO FRAMING WITH 1" TYPE S STEEL SCREWS SPACED 8" O.C.
4. **SEALANT** - FIRE CAULKING BOTH SIDES.
5. **BLOCKING** - (NOT SHOWN) WOOD BLOCKING AS NEEDED
6. **TAPE AND COMPOUND** - (NOT SHOWN) VINYL DRY OR PREMIXED JOINT COMPOUND, APPLIED IN TWO COATS TO JOISTS AND SCREW HEADS, PAPER TAPE, 2 IN. WIDE, EMBEDDED IN FIRST LAYER OF COMPOUND OVER ALL JOINTS.
7. **UNDERSIDE OF STRUCTURE**
8. **TOP OF STRUCTURE**

2 | WALL TYPE W02 - NON RATED - ACOUST. PART.
 1 1/2" = 1'-0"

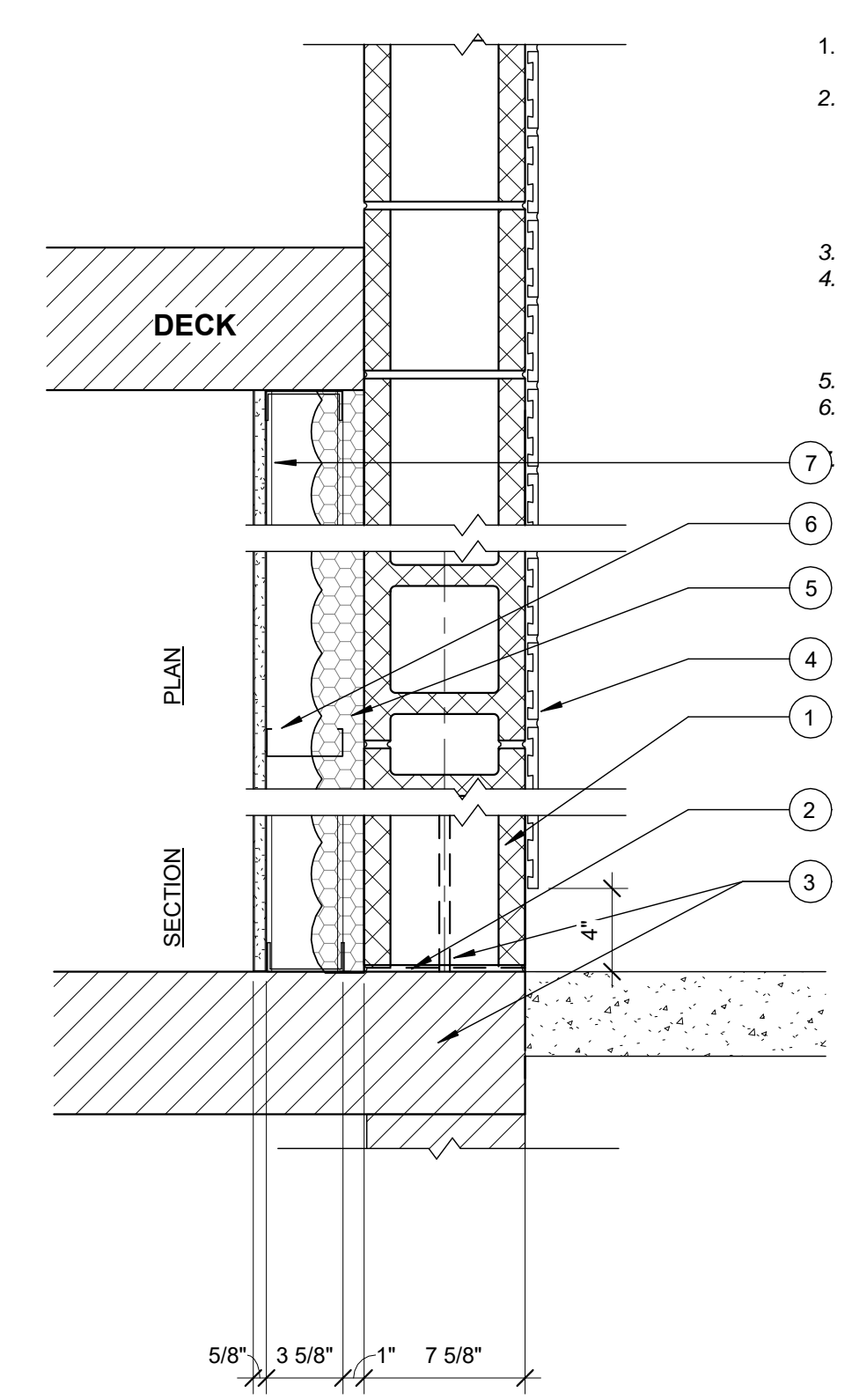
W03 NON BEARING, NON RATED EXTERIOR WALL
 STC SOUND - N/A



1. **CONT. METAL FLOOR AND CEILING RUNNER** - CHANNEL SHAPED 25 MSG STEEL WITH 1 1/4" LONG LEGS FASTENERS @ 2'-0" O.C. MAX. WITHIN 1" OF ENDS
2. **STEEL STUDS** - CHANNEL SHAPED 25 MSG 20 GA STEEL 6" STUDS SPACED MAX. 24" O.C. STUDS TO BE CUT 3/4" LESS THAN ASSEMBLY HEIGHT
3. **FIBERGLASS BATT INSULATION** - R13.3 MIN
4. **DENSGLOSS**
5. **AIR/MOISTURE BARRIER** - BUILDING WRAP - REFER TO SPECIFICATION.
6. **FURRING** - 3/4" PT WOOD FURRING OR EQUIVALENT
7. **FIBER CEMENT PANEL**
8. **GYP. BOARD** - (1) LAYER 5/8" GYP. BD., PAPER SURFACED, APPLIED PERPENDICULAR TO FRAMING WITH 1" TYPE S STEEL SCREWS SPACED 8" O.C.. SEE NOTES FOR GYP. BD. TYPE
9. **BED OF SEALANT** - MTL TRACKS IN CONTACT WITH CONCRETE TO BE SET IN A FULL BED OF SEALANT. SEAL OTHER TRACKS TO DECK.
10. **INSULATION** - 1 1/2" RIGID INSULATION. R-7.5 MIN.

3 | WALL TYPE 03 - EXTERIOR WALL - FIBER CEMENT PANEL
 1 1/2" = 1'-0"

LABEL 2 HR W01



1. **CONCRETE BLOCKS** - CLASSIFICATION D-2 (2HR) 8" NOM. THICKNESS.
2. **MORTAR** - BLOCKS LAID IN A FULL BED OF MORTAR, NOM. 3/8 IN THICK, OF NOT LESS THAN 2 1/4 AND NOT MORE THAN 3 1/2 PARTS CLEAN SHARP SAND TO 1 PART PORTLAND CEMENT (PROPORTIONED BY VOLUME) AND NOT MORE THAN 50 PERCENT HYDRATED LIME (BY CEMENT VOLUME). VERTICAL JOINTS STAGGERED.
3. **REINFORCING** - SEE STRUCTURAL
4. **THIN BRICK (ADDED)** - ONLY WHERE INDICATED ON ELEVATIONS. LAID IN BED OF THINSET. 2 1/4" X 7 5/8" ENDICOTT CLAY PRODUCTS: ROYAL RIVER FULL RANGE. WIRECUT TEXTURE. INSTALL IN ACCORDANCE TO MANUFACTURER'S RECOMMENDATIONS.
5. **INSULATION (ADDED)** - 2 1/2" CLOSED CELL SPRAY FOAM. R13.3 MIN.
6. **STEEL FRAMING (ADDED)** - 3 5/8" STEEL STUDS SPACED 16" OC. OFFSET 1" FROM CMU WALL
7. **5/8" GYPSUM WALL BOARD (ADDED)**

1 | WALL TYPE 01 - EXTERIOR CMU WALL
 1 1/2" = 1'-0"