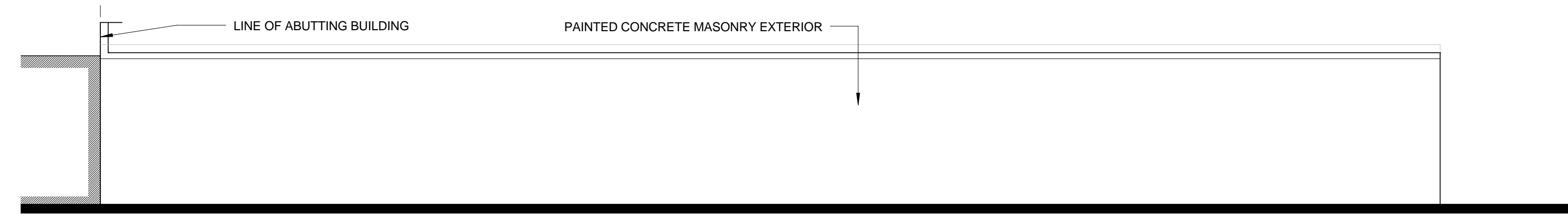
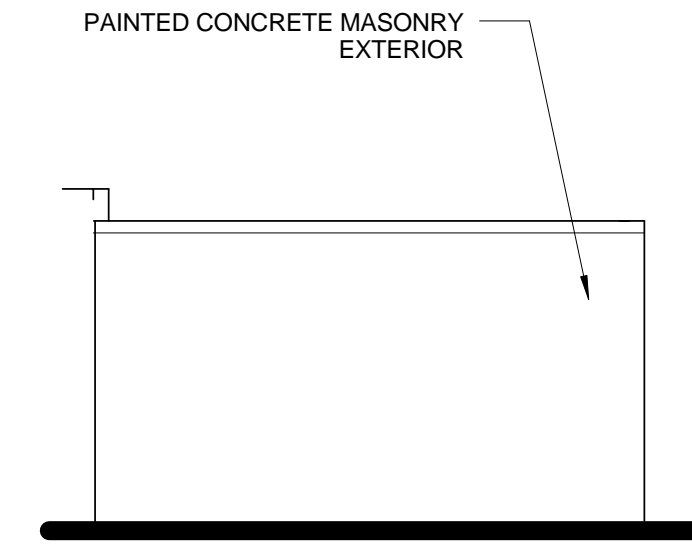


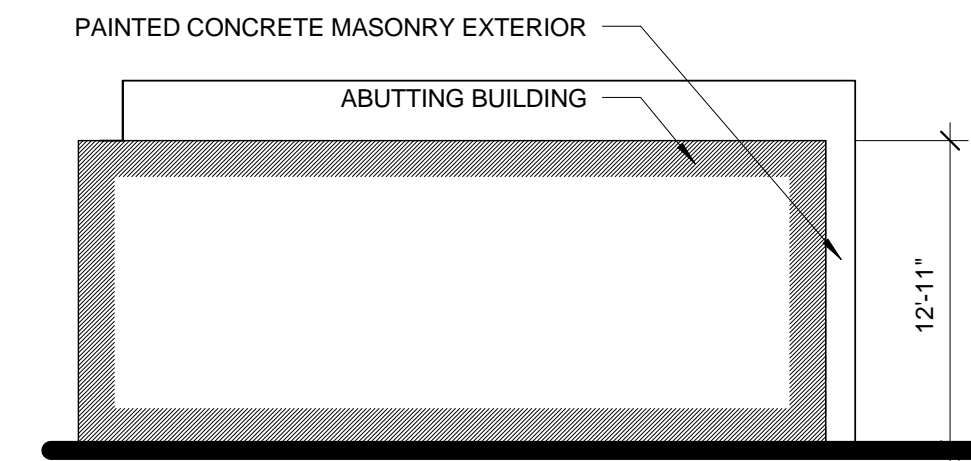
1 | WAREHOUSE NORTH ELEVATION  
1/8" = 1'-0"



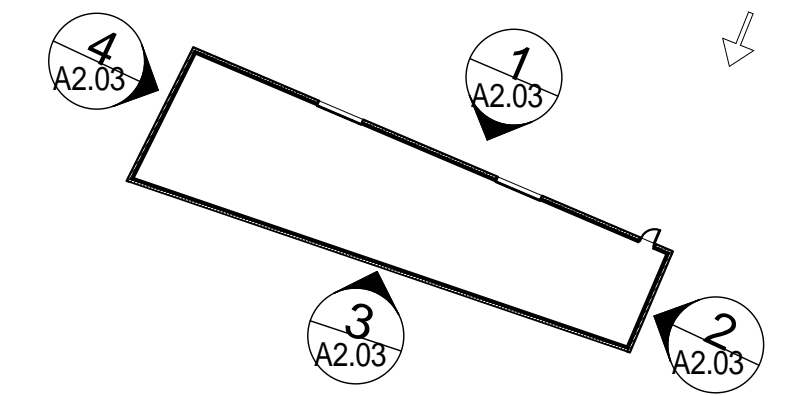
3 | WAREHOUSE SOUTH ELEVATION  
1/8" = 1'-0"



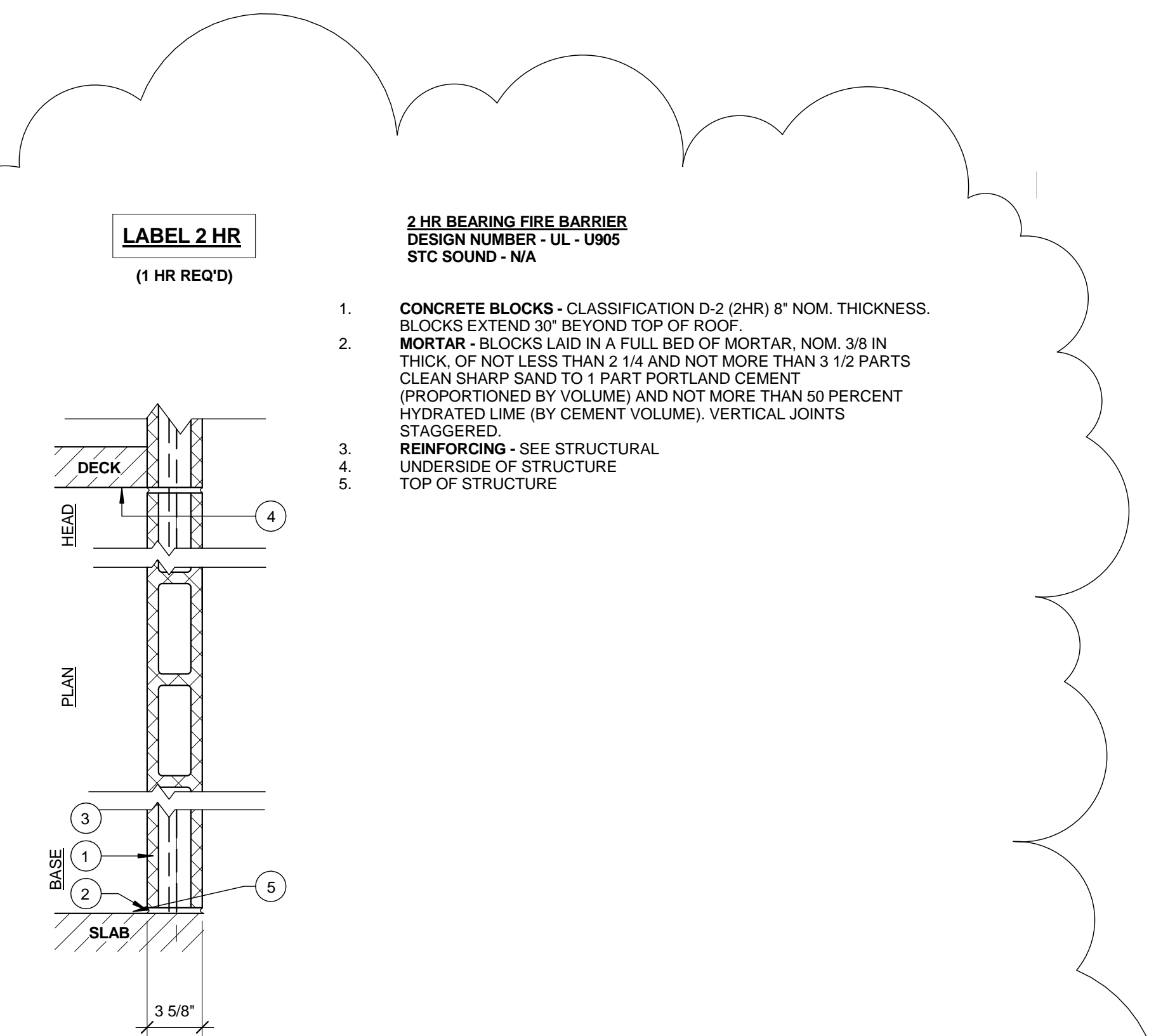
2 | WAREHOUSE EAST ELEVATION  
1/8" = 1'-0"



4 | WAREHOUSE WEST ELEVATION  
1/8" = 1'-0"



- KEY PLAN Copy 2  
1" = 40'-0"



5 | WEST EXTERIOR CMU WALL  
1 1/2" = 1'-0"