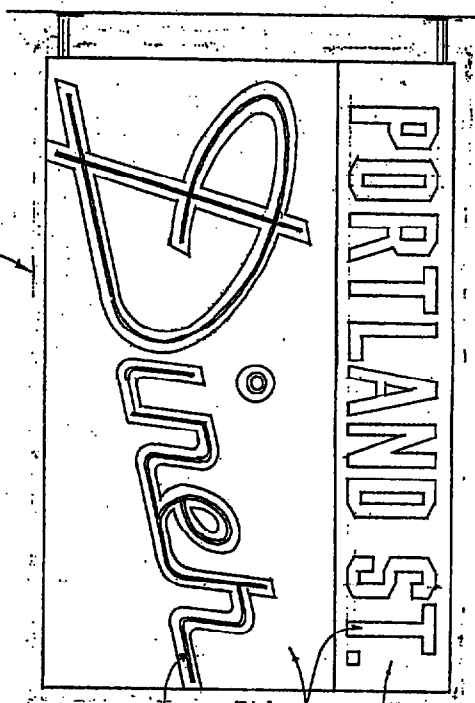
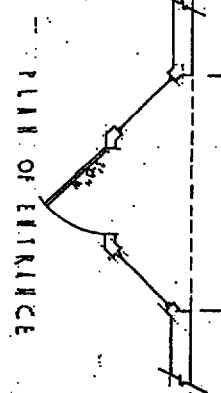
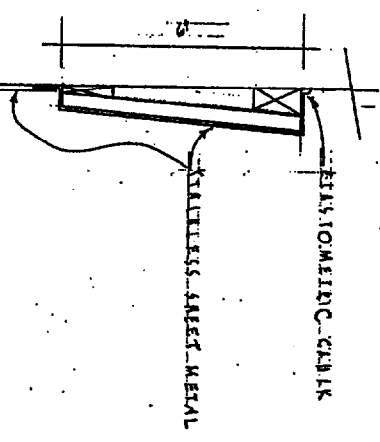
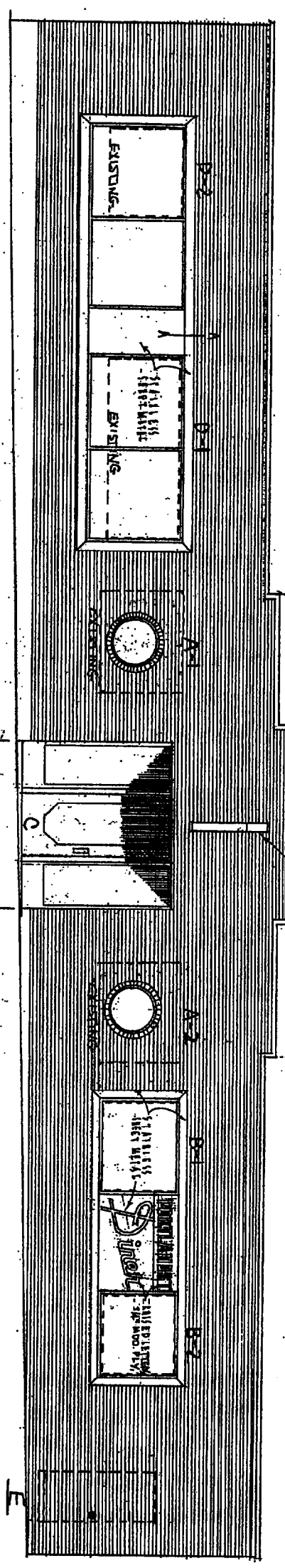




TOTAL VIEW OF SIGN



- BRIGHT RED IRON OXIDE PAINTED LETTERING
- WHITE
- DARK BLUE

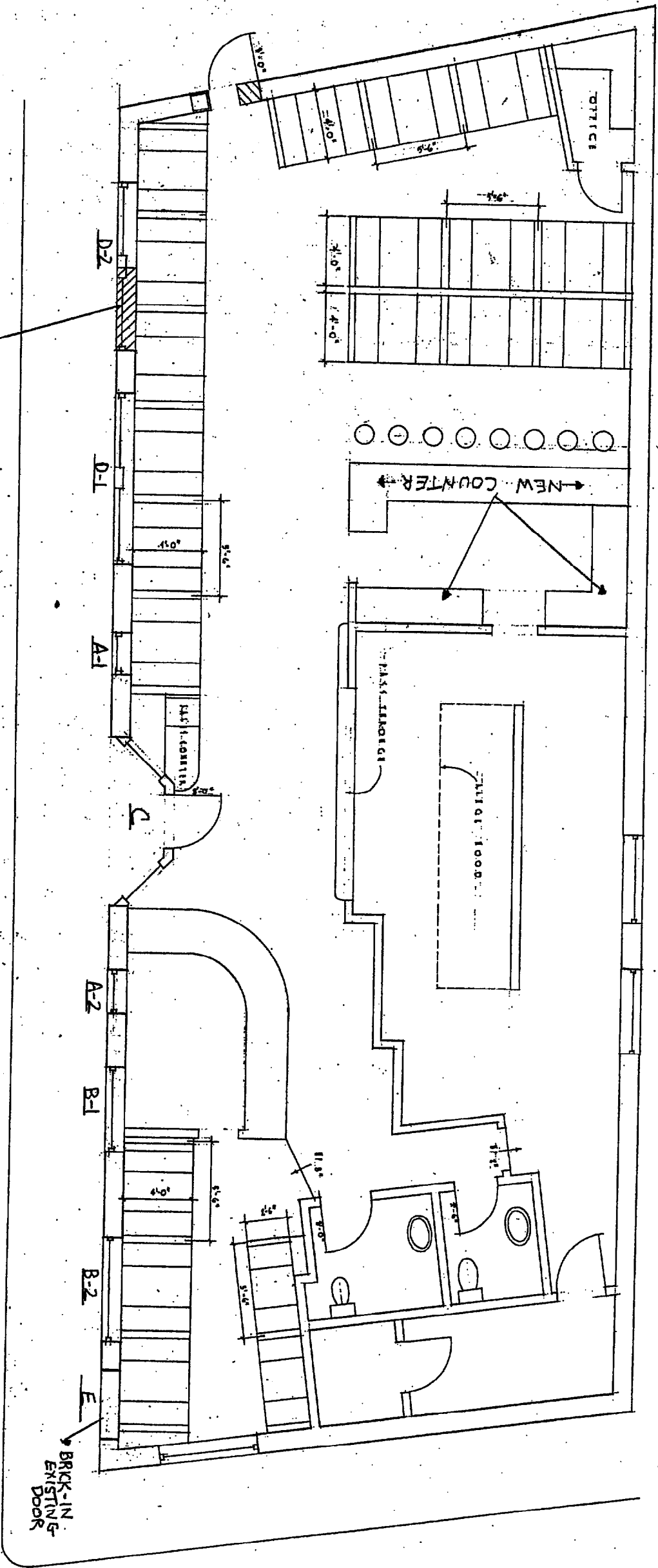


PLAN OF ENTRANCE

SECTION A-A

PORTLAND STREET DINER

40. PORTLAND ST. PORTLAND, ME. SCALE: 1/4" = 1'-0" MARCH 7, 2004



REMOVE (SEE L & L STRUCTURAL REPORT)

FIRST FLOOR PLAN

INCLUDE 1/4" SECTION

PORTLAND STREET DINER

1070 KILLIP ST. PORTLAND, ME. PROJECT 15.2004